


Aquifer Vulnerability (ISI)

- High (< 30)
- Medium (30 - 80)
- Low (> 80)

Low (>80)
 Medium (30-80)
 High (<30)



Quinte CONSERVATION

Moira River, Napanee Region and Prince Edward Region Watersheds.
 RR # 2, 2061 Old Highway # 2, Belleville, Ontario, K8N 4Z2.
 www.quintecoconservation.ca, 613-968-3434

Produced by Quinte Conservation under license with the Ontario Ministry of Natural Resources. Copyright Quinte Conservation and the King's Printer for Ontario, 2023. Data is projected in NAD 83 UTM Zone 18N.

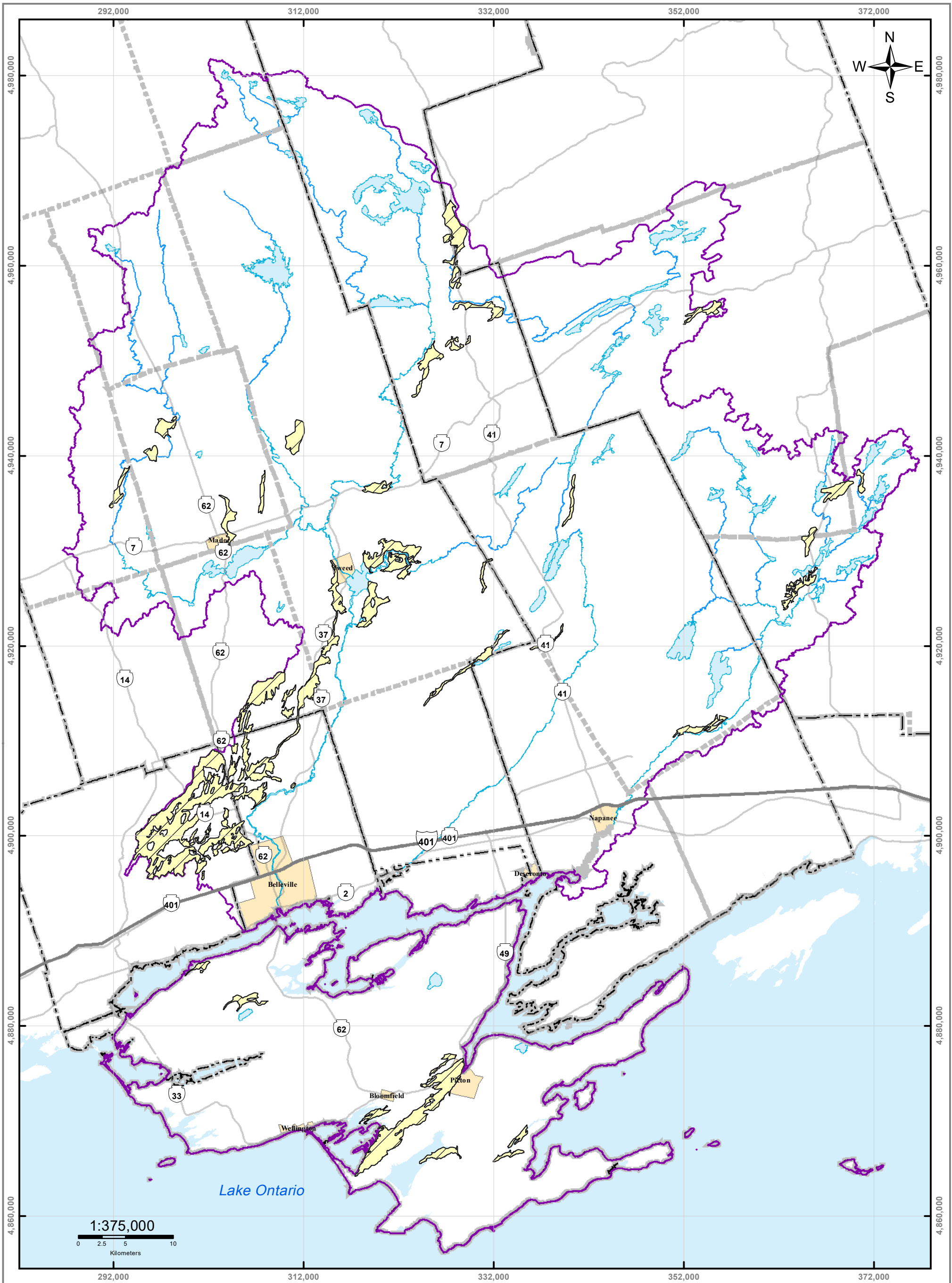
Digital Mapping Sources:
 Base Map - Ministry of Natural Resources
 Soil Data - Ministry of Natural Resources

This map is for illustrative purposes only. QC makes no warranties and assumes no liability whatsoever regarding the truth, accuracy, agency or completeness of the map and its associated data.

Legend

- Highway 401
- Rivers
- Quinte Watershed
- Highways
- Lakes

Map 5.1 Highly Vulnerable Aquifers



Legend

- Highway 401 — Rivers □ Quinte Watershed Area ▨ Significant Recharge Areas
- Highways □ Lakes □ Populated Areas

Map 5.2 Significant Groundwater Recharge Areas



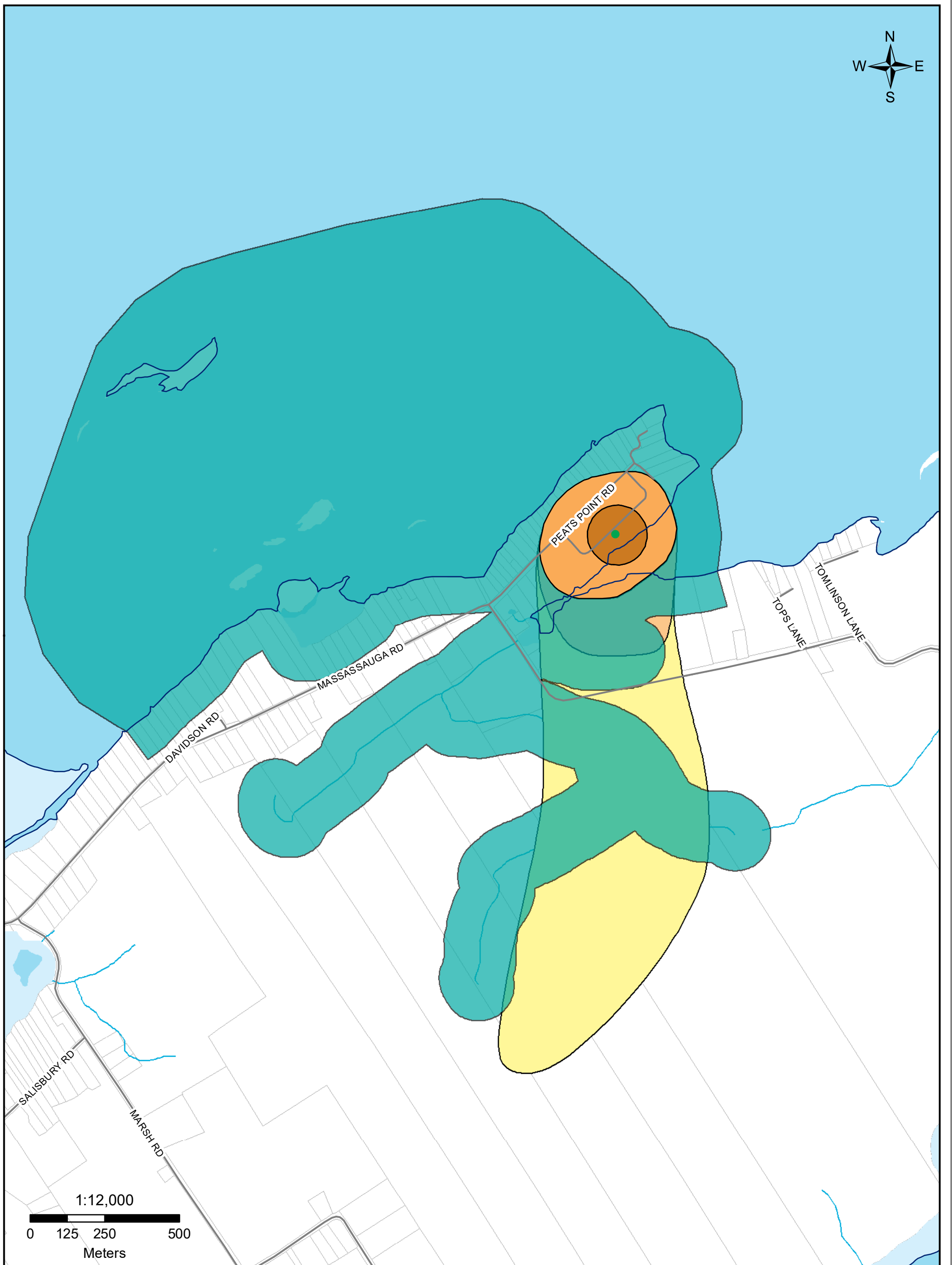
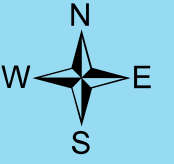
**Quinte
CONSERVATION**

Moira River, Napanee Region and Prince Edward Region Watersheds.
RR # 2, 2051 Old Highway # 2, Belleville, Ontario, K8N 4Z2.
www.quinteconservation.ca, 613-968-3434

Produced by Quinte Conservation under license with the
Ontario Ministry of Natural Resources. Copyright Quinte Conservation and
the King's Printer for Ontario, 2023. Data is projected in NAD 83
UTM Zone 18N.

Digital Mapping Sources:
Base Map - Ontario Ministry of Natural Resources

This map is for illustrative purposes only. QC makes no warranty as to accuracy, currency, or completeness of this map or the associated data.



Legend

- Water Courses
- Shoreline
- WHPA A
- WHPA B
- WHPA C
- WHPA D
- WHPA E
- Parcels

Map 5.3 Peats Point Wellhead Protection Area

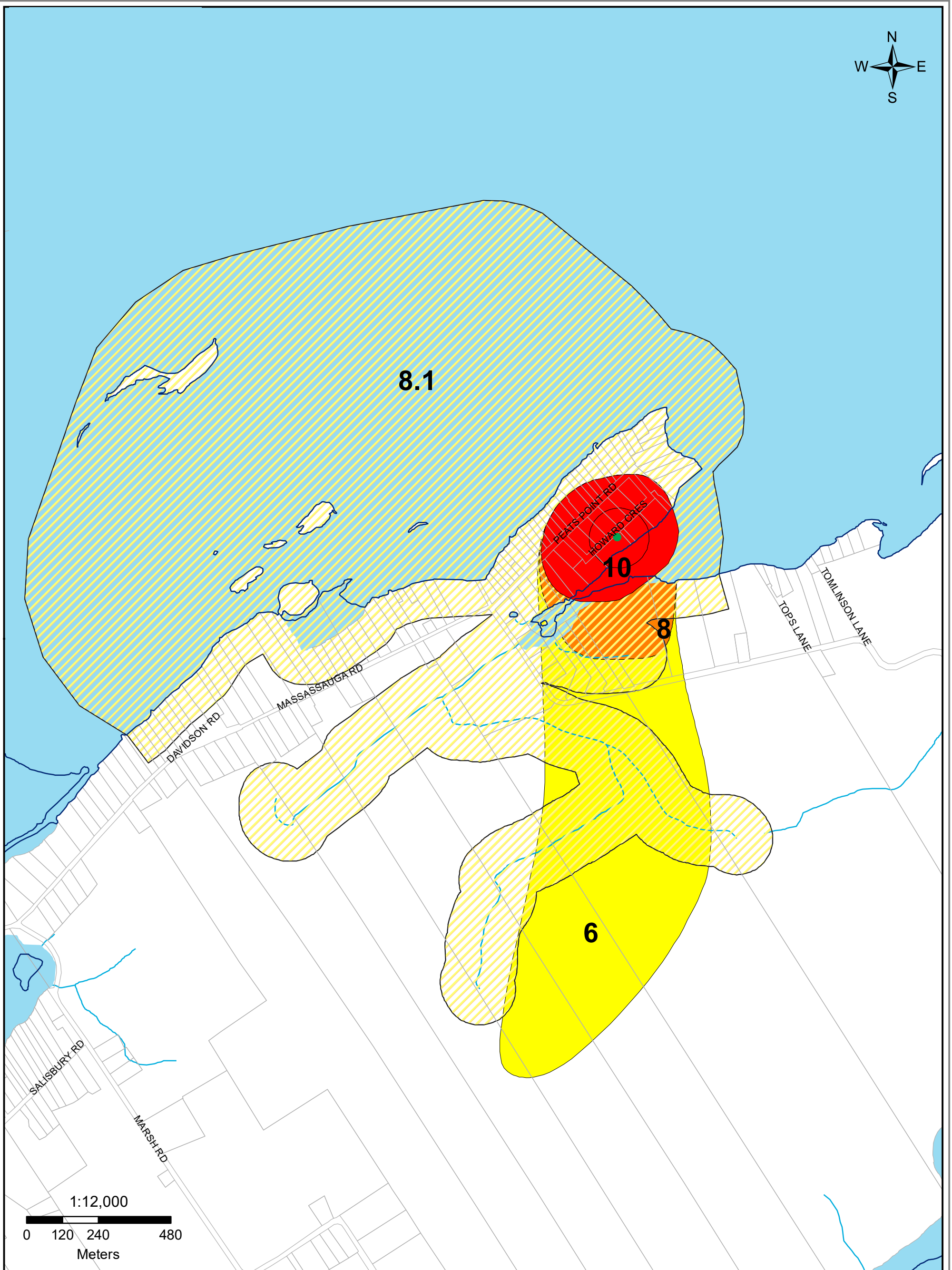


Moira River, Napanee Region and Prince Edward Region Watersheds.
RR # 2, 2061 Old Highway # 2, Belleville, Ontario, K8N 4Z2.
www.quinteconservation.ca, 613-968-3434

Produced by Quinte Conservation under license with the Ontario Ministry of Natural Resources. Copyright Quinte Conservation and the King's Printer for Ontario, 2023. Data is projected in NAD 83 UTM Zone 18N.

Digital Mapping Sources:
Base Map - Ontario Ministry of Natural Resources
WHPAs - Dillon Consulting

This map is for illustrative purposes only. QC makes no warranty and assumes no liability whatsoever regarding the truth, accuracy, currency or completeness of this map or the associated data.



Legend

- Municipal Well
- Water Courses
- Vulnerability = 8.1
- Vulnerability = 6
- Shoreline
- Vulnerability = 10
- Vulnerability = 8
- Parcels



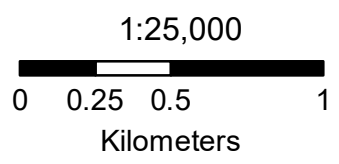
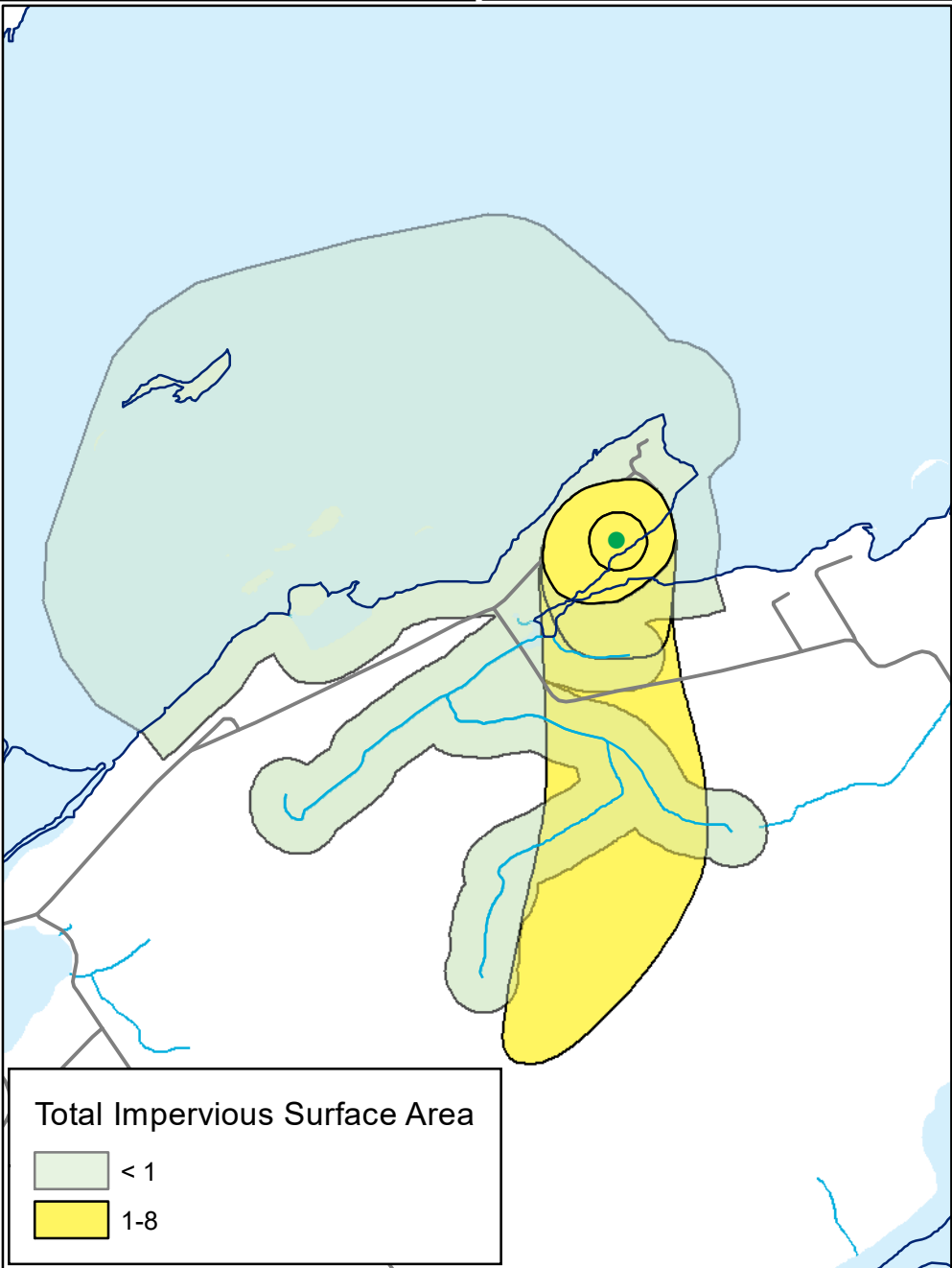
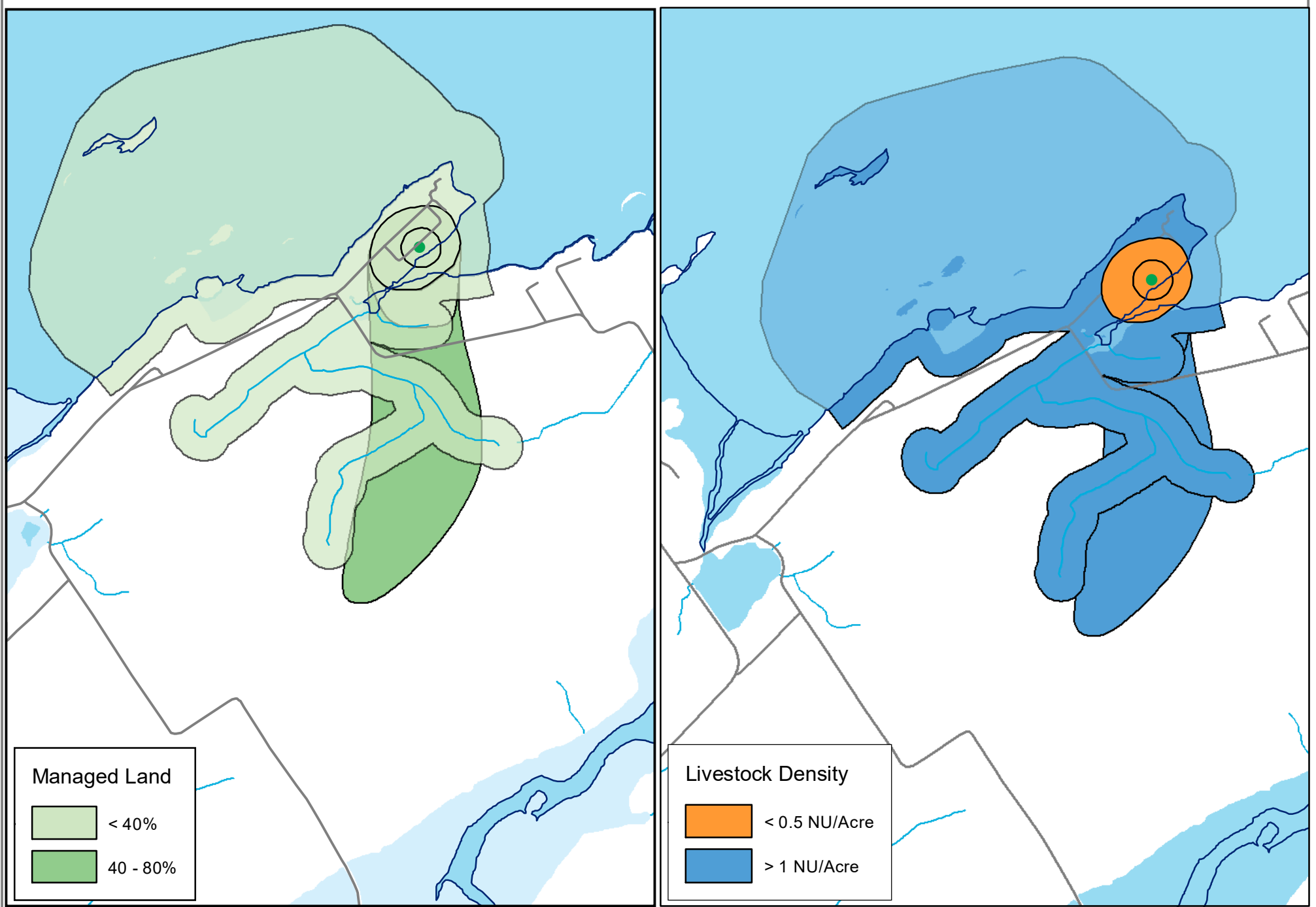
Moira River, Napanee Region and Prince Edward Region Watersheds.
RR # 2, 2061 Old Highway # 2, Belleville, Ontario, K8N 4Z2.
www.quinteconservation.ca, 613-968-3434

Produced by Quinte Conservation under license with the
Ontario Ministry of Natural Resources. Copyright Quinte Conservation and
the King's Printer for Ontario, 2023. Data is projected in NAD 83
UTM Zone 18N.

Digital Mapping Sources:
Base Map - Ontario Ministry of Natural Resources

Map 5.4 Peats Point Vulnerability Scoring

Map 5.4 Peats Point Vulnerability Scoring



Quinte
CONSERVATION

Legend

● Municipal Well — Roads — Water Courses

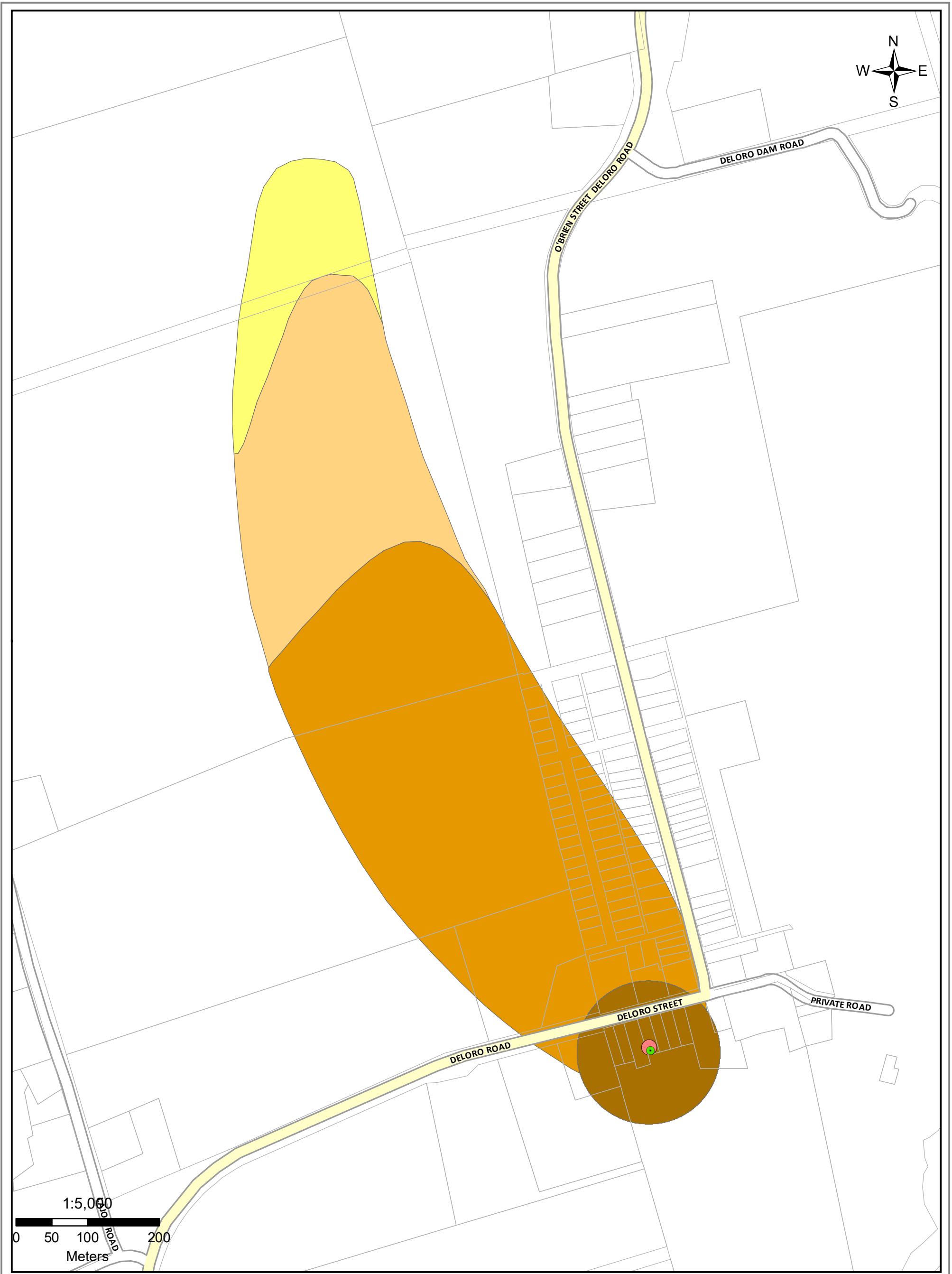

Map 5.5 Peats Point Wellhead Protection Area Managed Land, Livestock Density & Impervious Surface Area

Moira River, Napanee Region and Prince Edward Region Watersheds.
RR # 2, 2061 Old Highway # 2, Belleville, Ontario, K8N 4Z2.
www.quinteconservation.ca, 613-968-3434

Produced by Quinte Conservation under license with the
Ontario Ministry of Natural Resources. Copyright Quinte Conservation and
the King's Printer for Ontario, 2023. Data is projected in NAD 83
UTM Zone 18N.

Digital Mapping Sources:
Base Map - Ontario Ministry of Natural Resources
Monitoring Wells - Municipality of Marmora & Lake

This map is for illustrative purposes only. QC makes no warranty and assumes no liability whatsoever regarding the truth,
accuracy, currency or completeness of this map or the associated data.

Quinte
CONSERVATION







Molok River, Napanee Region and Prince Edward Region Watersheds.
RR # 2, 2061 Old Highway # 2, Belleville, Ontario, K8N 4Z2.
www.quinticonservation.ca, 613-968-3434

Produced by Quinte Conservation under license with the
Ontario Ministry of Natural Resources. Copyright Quinte Conservation and
the King's Printer for Ontario, 2023. Data is projected in NAD 83
UTM Zone 18N.

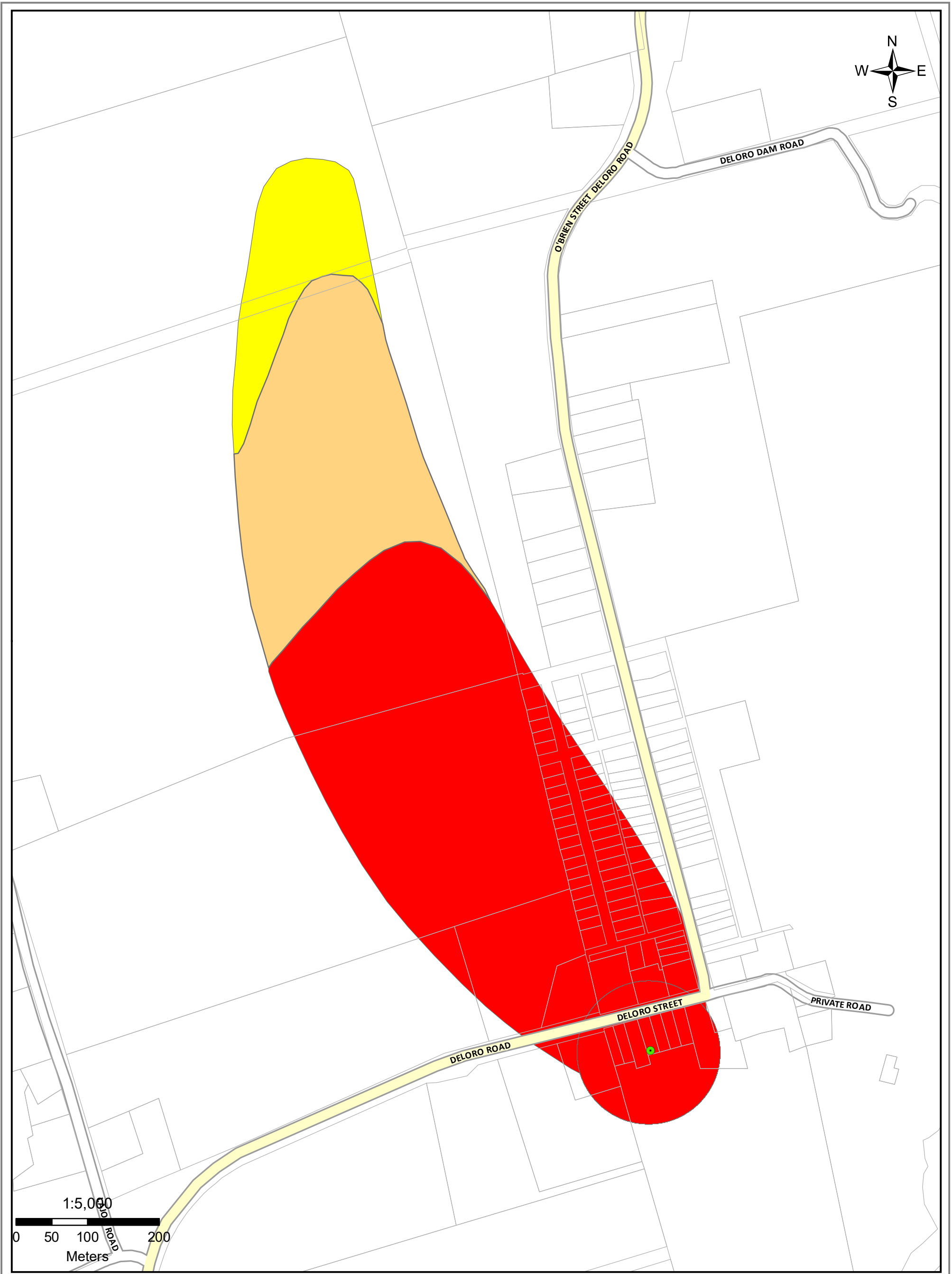

Digital Mapping Sources:
Base Map - Ontario Ministry of Natural Resources
Monitoring Wells - Municipality of Marmora & Lake

This map is for illustrative purposes only. QC makes no warranty and assumes no liability whatsoever regarding the truth,
accuracy, currency, or completeness of this map or the associated data.

Legend

	Municipal Well		WHPA A		WHPA C
	Monitoring Wells		WHPA B		WHPA D

Map 5.6 Deloro Wellhead Protection Area

Moira River, Napanee Region and Prince Edward Region Watersheds.
 RR # 2, 2061 Old Highway # 2, Belleville, Ontario, K8N 4Z2.
 www.quinticonservation.ca, 613-968-3434

Produced by Quinte Conservation under license with the
 Ontario Ministry of Natural Resources. Copyright Quinte Conservation and
 the King's Printer for Ontario, 2023. Data is projected in NAD 83
 UTM Zone 18N.

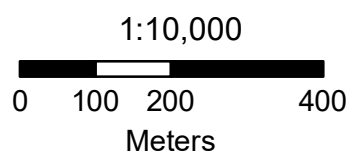
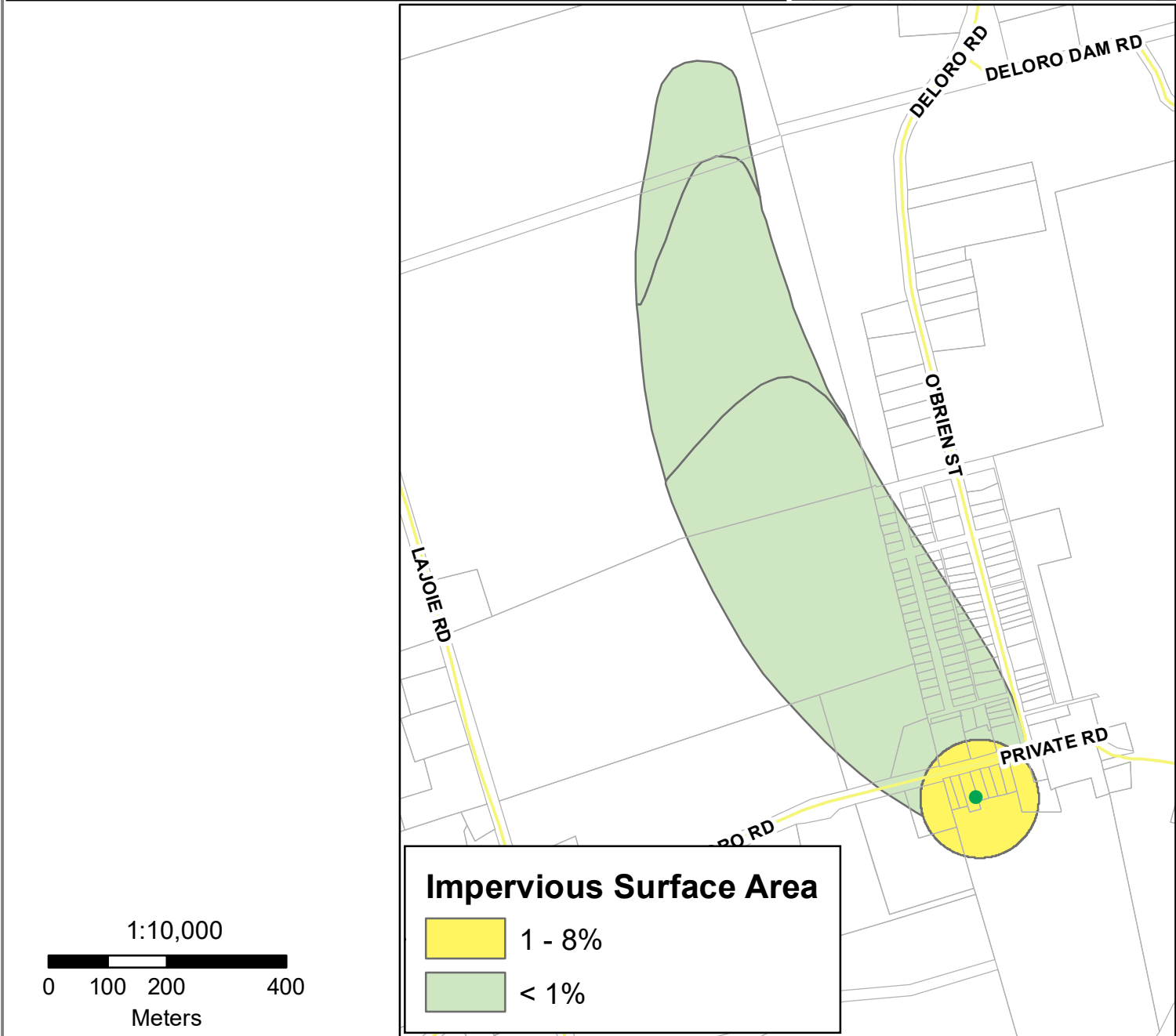
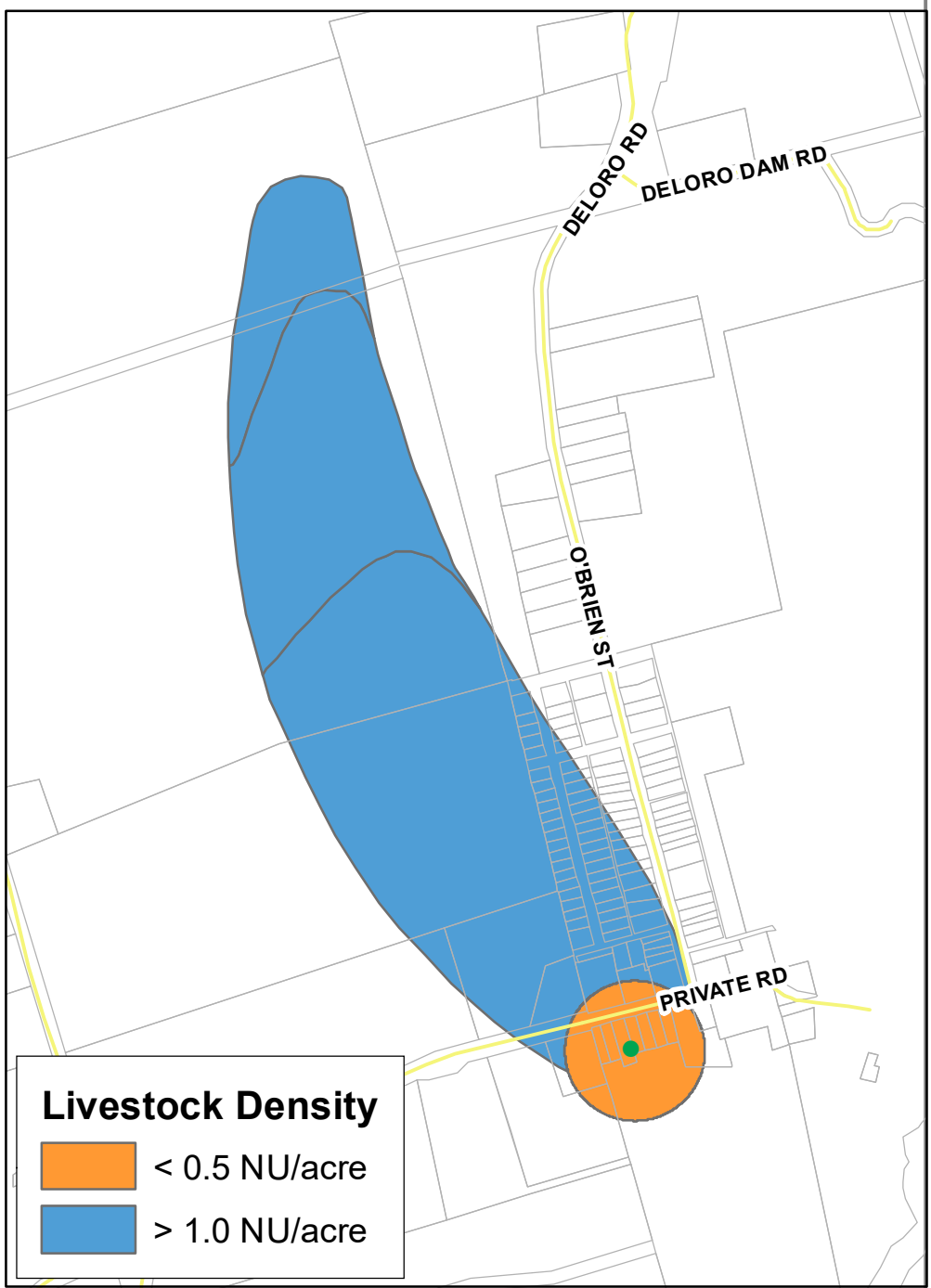
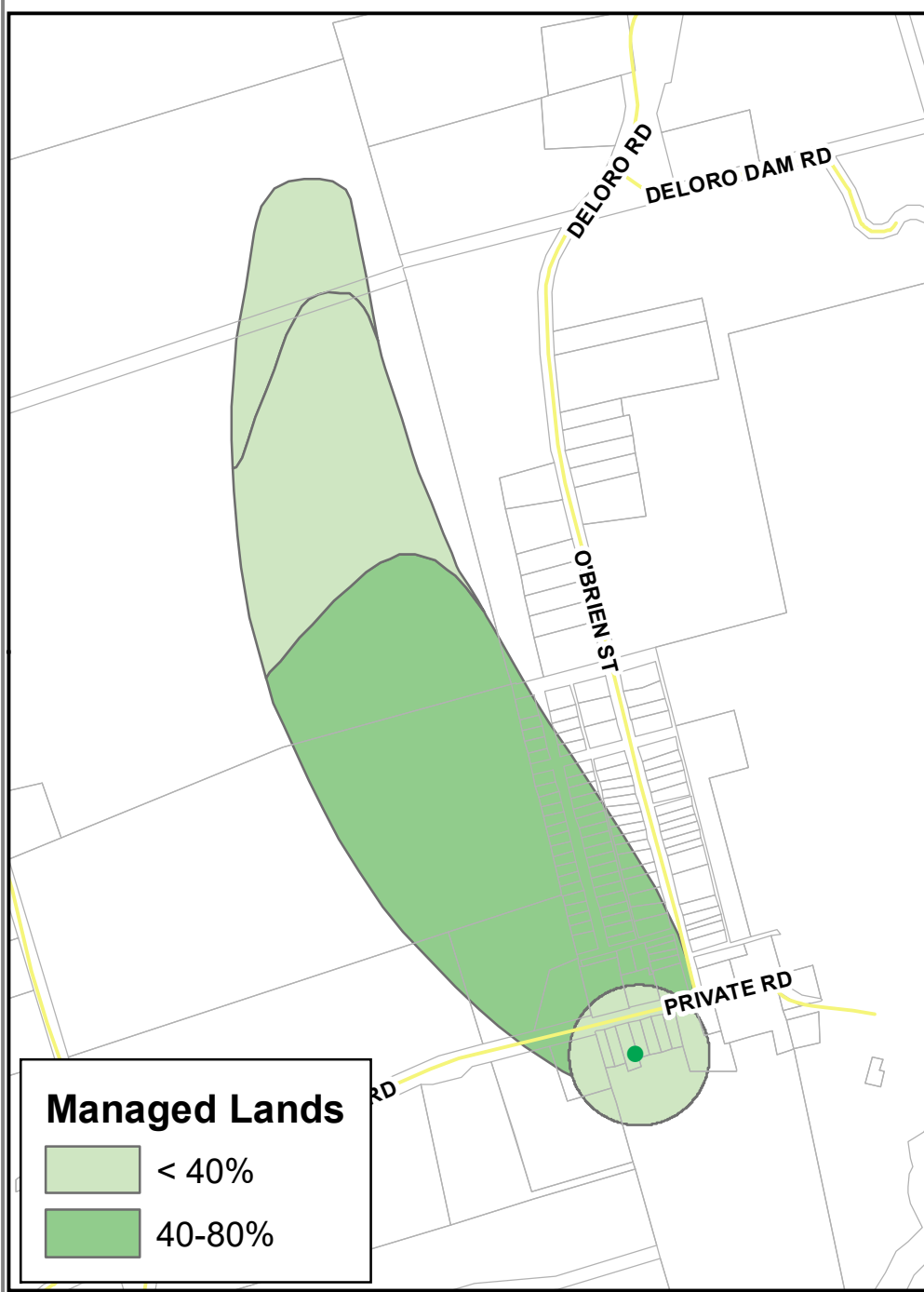
Digital Mapping Sources:
 Base Map - Ontario Ministry of Natural Resources
 Monitoring Wells - Municipality of Marmora & Lake

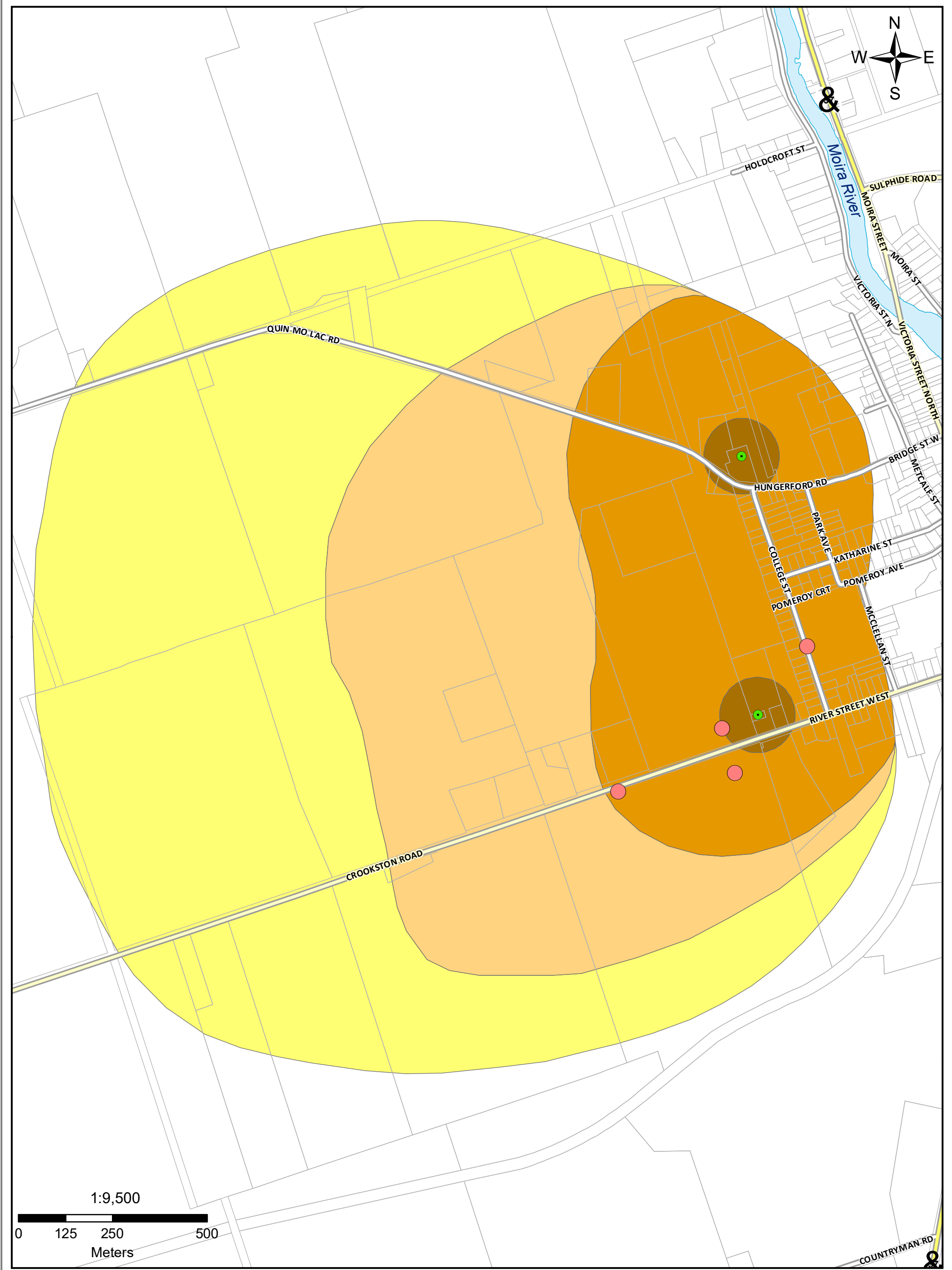
This map is for illustrative purposes only. QC makes no warranty and assumes no liability whatsoever regarding the truth, accuracy, currency, or completeness of this map or the associated data.

Legend

- Municipal Well
- Parcels
- Vulnerability = 10
- Vulnerability = 6
- Vulnerability = 8

Map 5.7 Deloro Vulnerability Scoring





Legend

- Municipal Wells
- Parcels
- WHPA B
- WHPA D
- Monitoring Wells
- WHPA A
- WHPA C

Map 5.9 Tweed Wellhead Protection Area

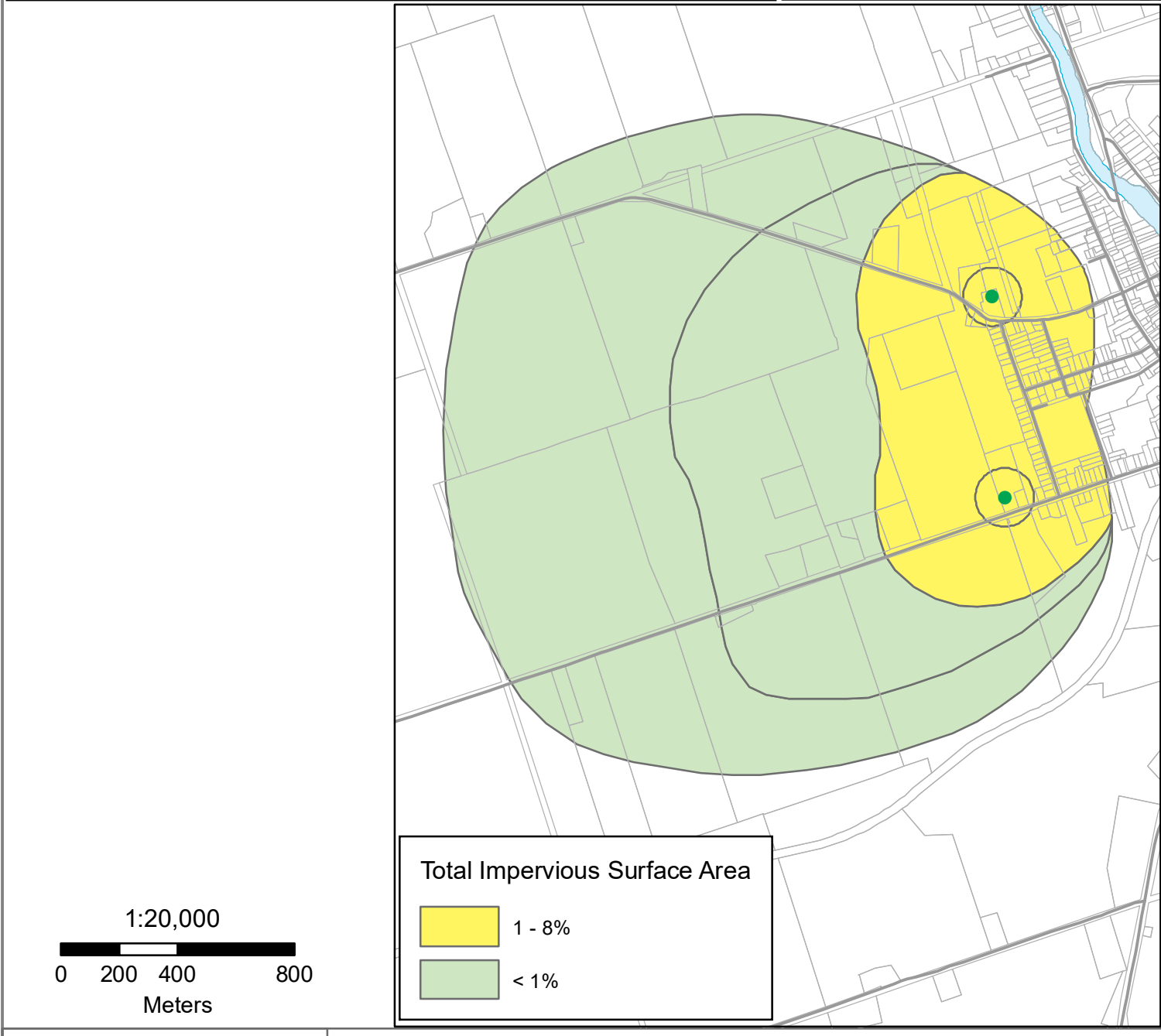
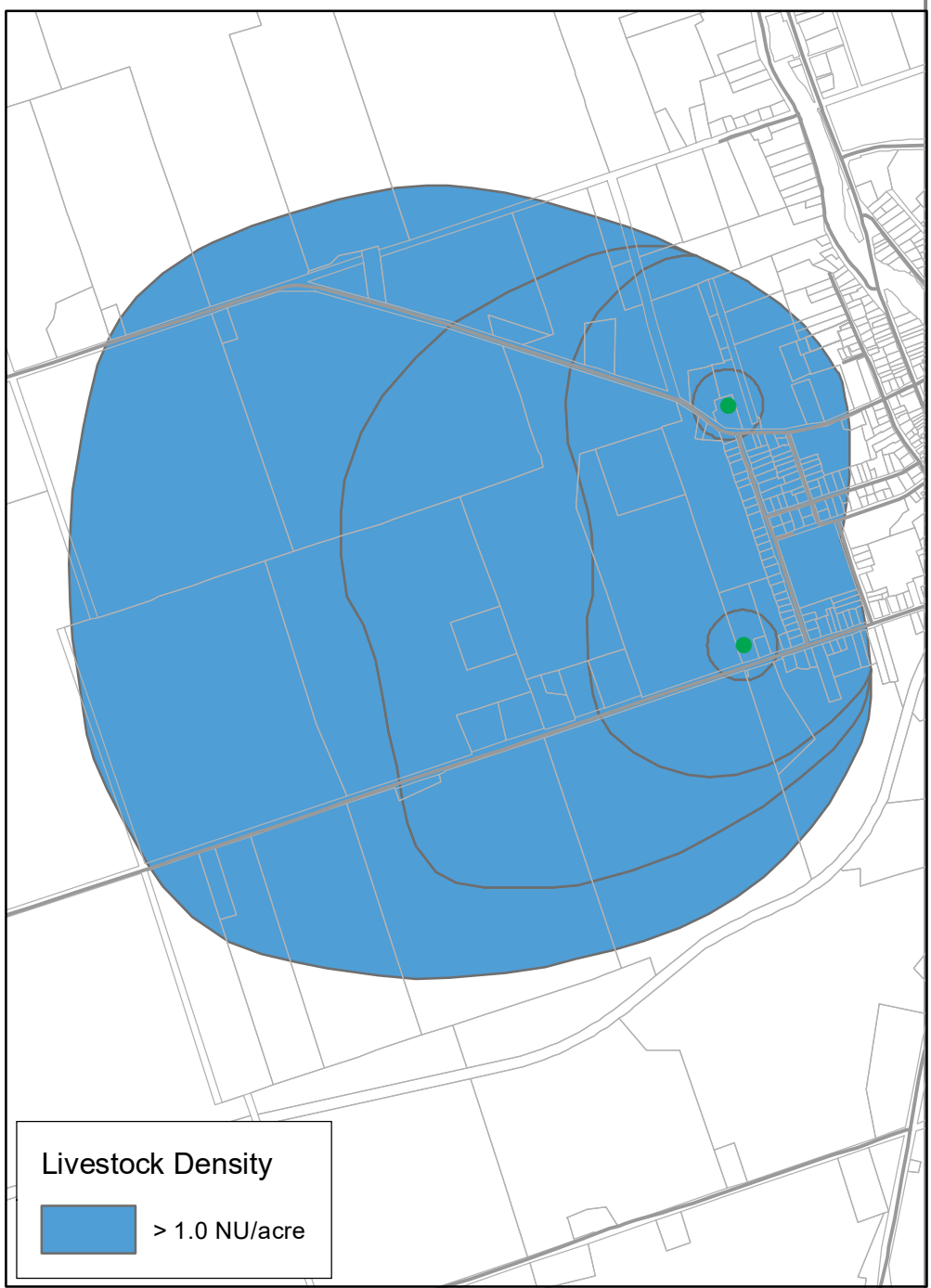
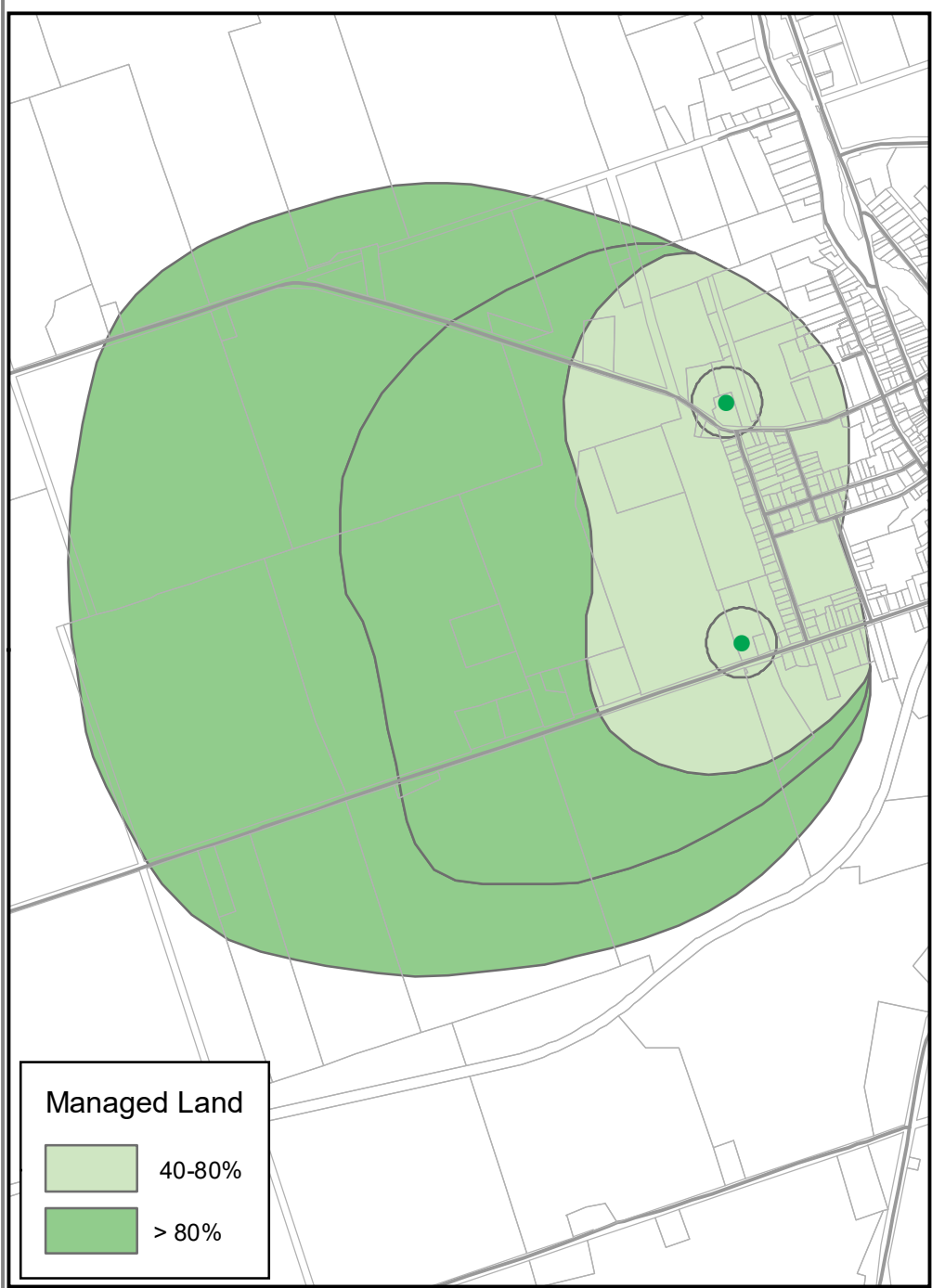


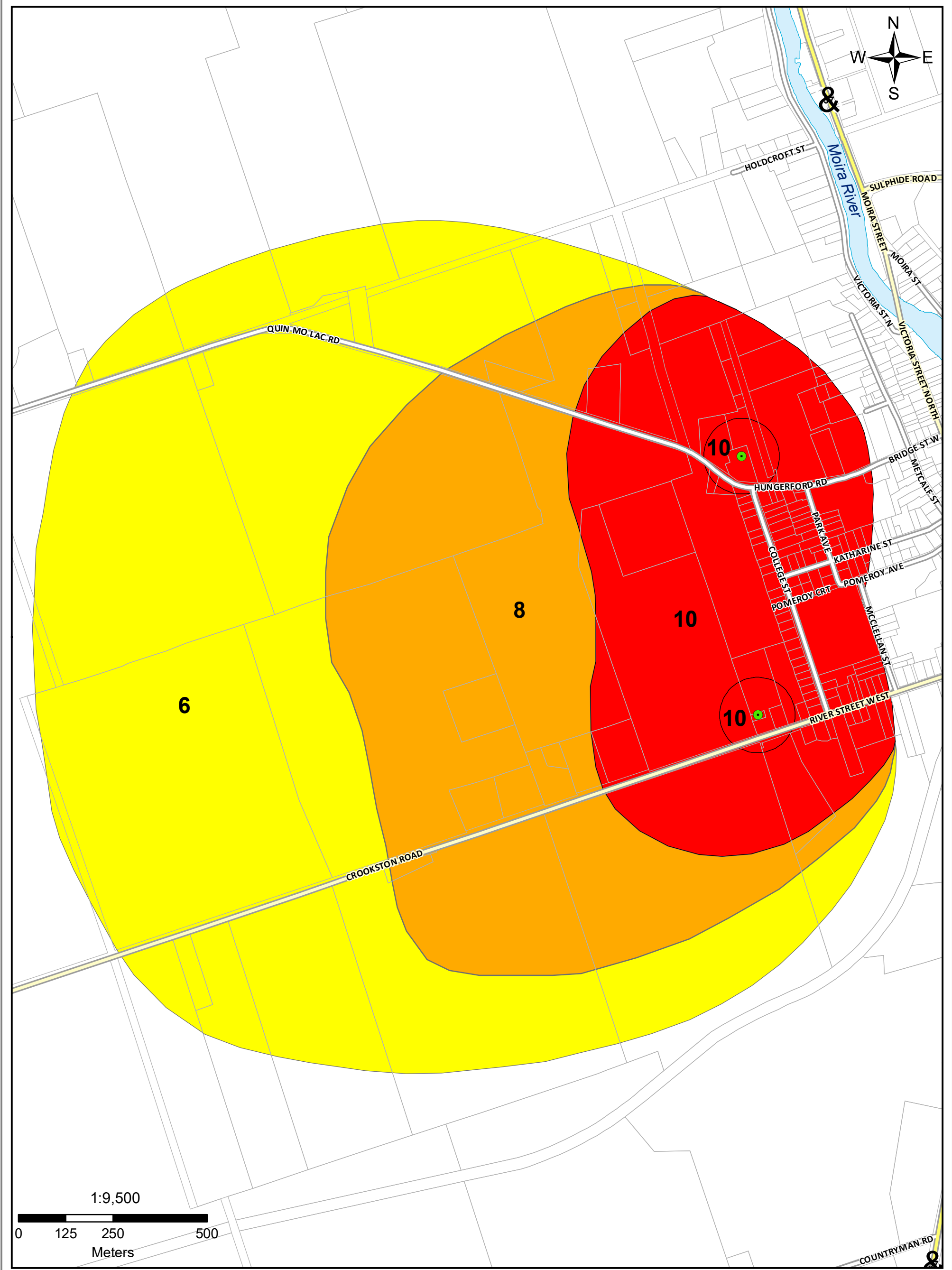
Moira River, Napanee Region and Prince Edward Region Watersheds.
 RR # 2, 2061 Old Highway # 2, Belleville, Ontario, K8N 4Z2.
 www.quinteconservation.ca, 613-968-3434

Produced by Quinte Conservation under license with the
 Ontario Ministry of Natural Resources. Copyright Quinte Conservation and
 the King's Printer for Ontario, 2023. Data is projected in NAD 83
 UTM Zone 18N.

Digital Mapping Sources:
 Base Map - Ontario Ministry of Natural Resources
 Monitoring Wells - Municipality of Tweed

This map is for illustrative purposes only. QC makes no warranty, and assumes no liability whatsoever regarding the truth,
 accuracy, currency, or completeness of this map or the associated data.





Quinte
CONSERVATION

Moira River, Napanee Region and Prince Edward Region Watersheds.
RR #2, 2061 Old Highway #2, Belleville, Ontario, K8N 4Z2.
www.quinteconservation.ca, 613-968-3434

Produced by Quinte Conservation under license with the
Ontario Ministry of Natural Resources. Copyright Quinte Conservation and
the King's Printer for Ontario, 2023. Data is projected in NAD 83
UTM Zone 18N.

Digital Mapping Sources:
Base Map - Ontario Ministry of Natural Resources
Monitoring Wells - Municipality of Tweed

This map is for illustrative purposes only. QC makes no warranty, and assumes no liability whatsoever regarding the truth,
accuracy, currency, or completeness of this map or the associated data.

Legend

- Municipal Well
- Vulnerability = 10
- Vulnerability = 6
- Vulnerability = 8
- Parcels

Map 5.10 Tweed Vulnerability Scoring



Moira River, Napanee Region and Prince Edward Region Watersheds.
 RR #2, 2061 Old Highway #2, Belleville, Ontario, K8N 4Z2.
 www.quinteconservation.ca, 613-968-3434

Produced by Quinte Conservation under license with the
 Ontario Ministry of Natural Resources. Copyright Quinte Conservation and
 the King's Printer for Ontario, 2023. Data is projected in NAD 83
 UTM Zone 18N.

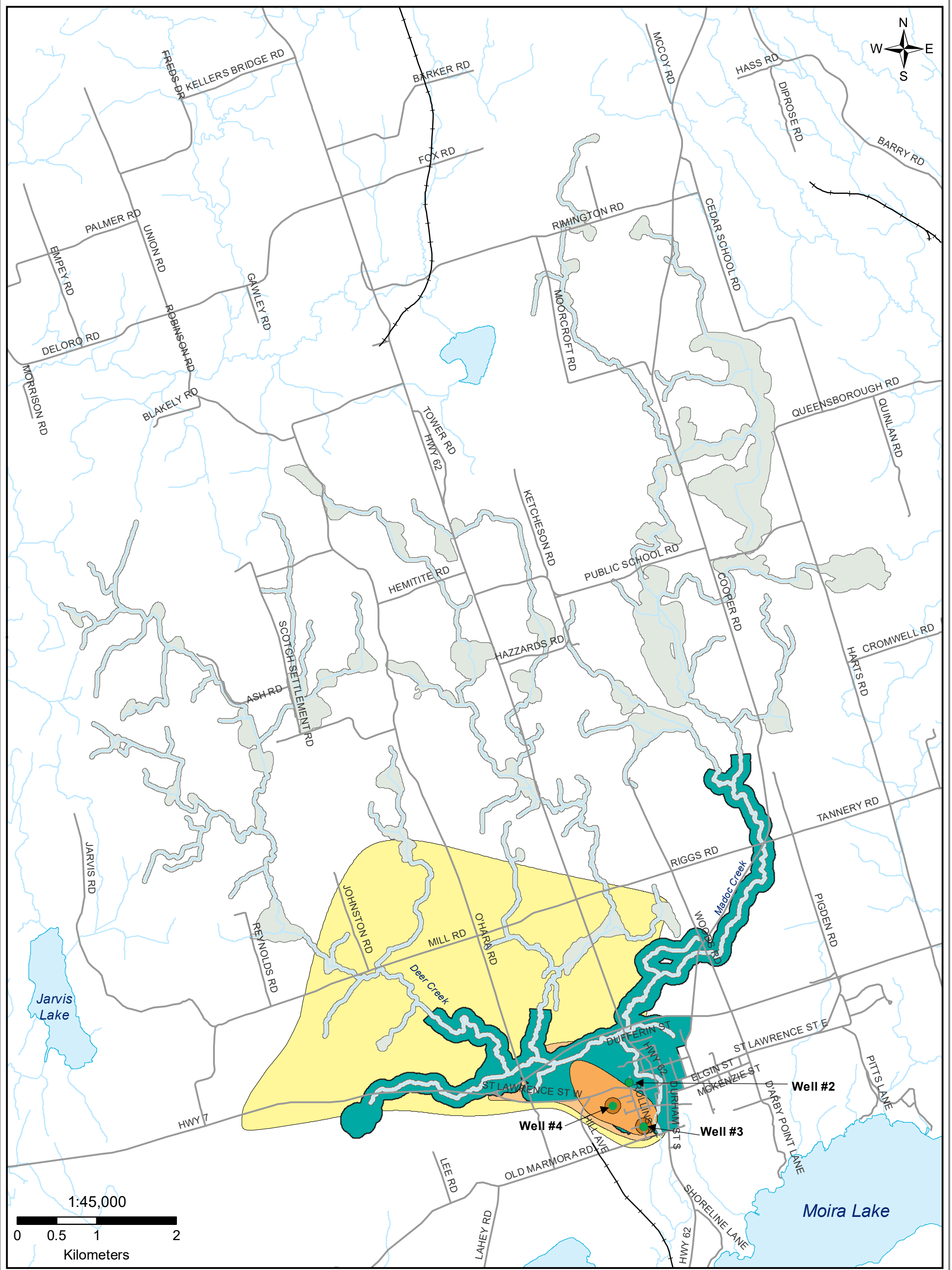
Digital Mapping Sources:
 Base Map - Ontario Ministry of Natural Resources
 Monitoring Wells - Municipality of Tweed

This map is for illustrative purposes only. QC makes no warranty, and assumes no liability whatsoever regarding the truth,
 accuracy, currency, or completeness of this map or the associated data.

Legend

- Municipal Wells
- WHPA A
- WHPA C
- Issues Contributing Area
- Parcels
- WHPA B
- WHPA D

Map 5.12 Tweed Issues Contributing Area



Legend

- Municipal Wells
- +— Railroad
- Roads
- Creeks
- Lakes
- WHPA A
- WHPA B
- WHPA C
- WHPA D
- WHPA E
- WHPA-ICA

Map 5.13 Madoc Wellhead Protection Area

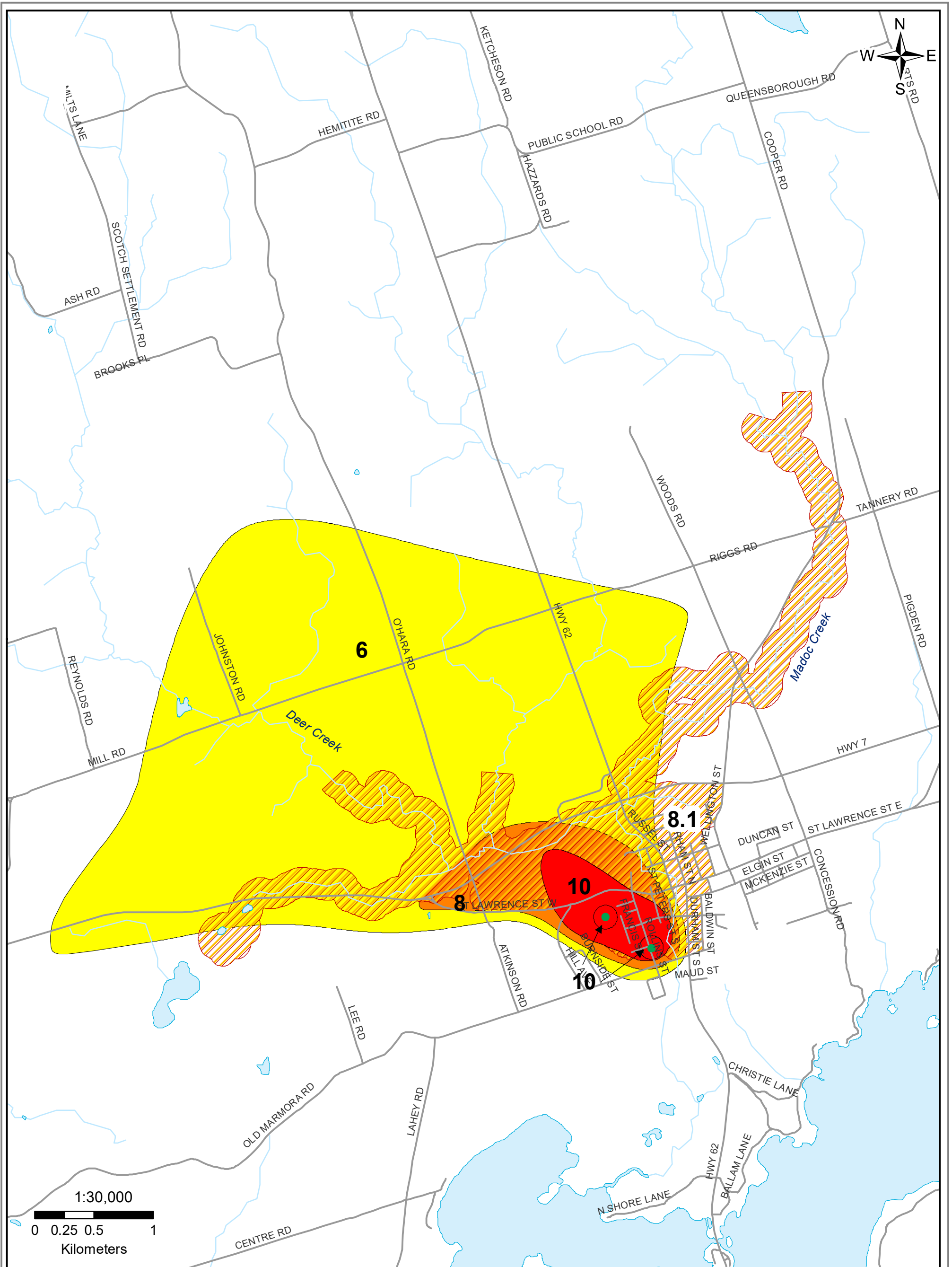


Moira River, Napanee Region and Prince Edward Region Watersheds.
 RR # 2, 2061 Old Highway # 2, Belleville, Ontario, K8N 4Z2.
 www.quinteconservation.ca, 613-968-3434

Produced by Quinte Conservation under license with the
 Ontario Ministry of Natural Resources. Copyright Quinte Conservation and
 the King's Printer for Ontario, 2023. Data is projected in NAD 83
 UTM Zone 18N.

Digital Mapping Sources:
 Base Map - Ontario Ministry of Natural Resources

This map is for illustrative purposes only. QC makes no warranty and assumes no liability whatsoever regarding the truth, accuracy, currency or completeness of this map or the associated data.



Quinte
CONSERVATION

Moira River, Napanee Region and Prince Edward Region Watersheds.
RR # 2, 2061 Old Highway # 2, Belleville, Ontario, K8N 4Z2.
www.quinteconservation.ca, 613-968-3434

Produced by Quinte Conservation under license with the
Ontario Ministry of Natural Resources. Copyright Quinte Conservation and
the King's Printer for Ontario, 2023. Data is projected in NAD 83
UTM Zone 18N.

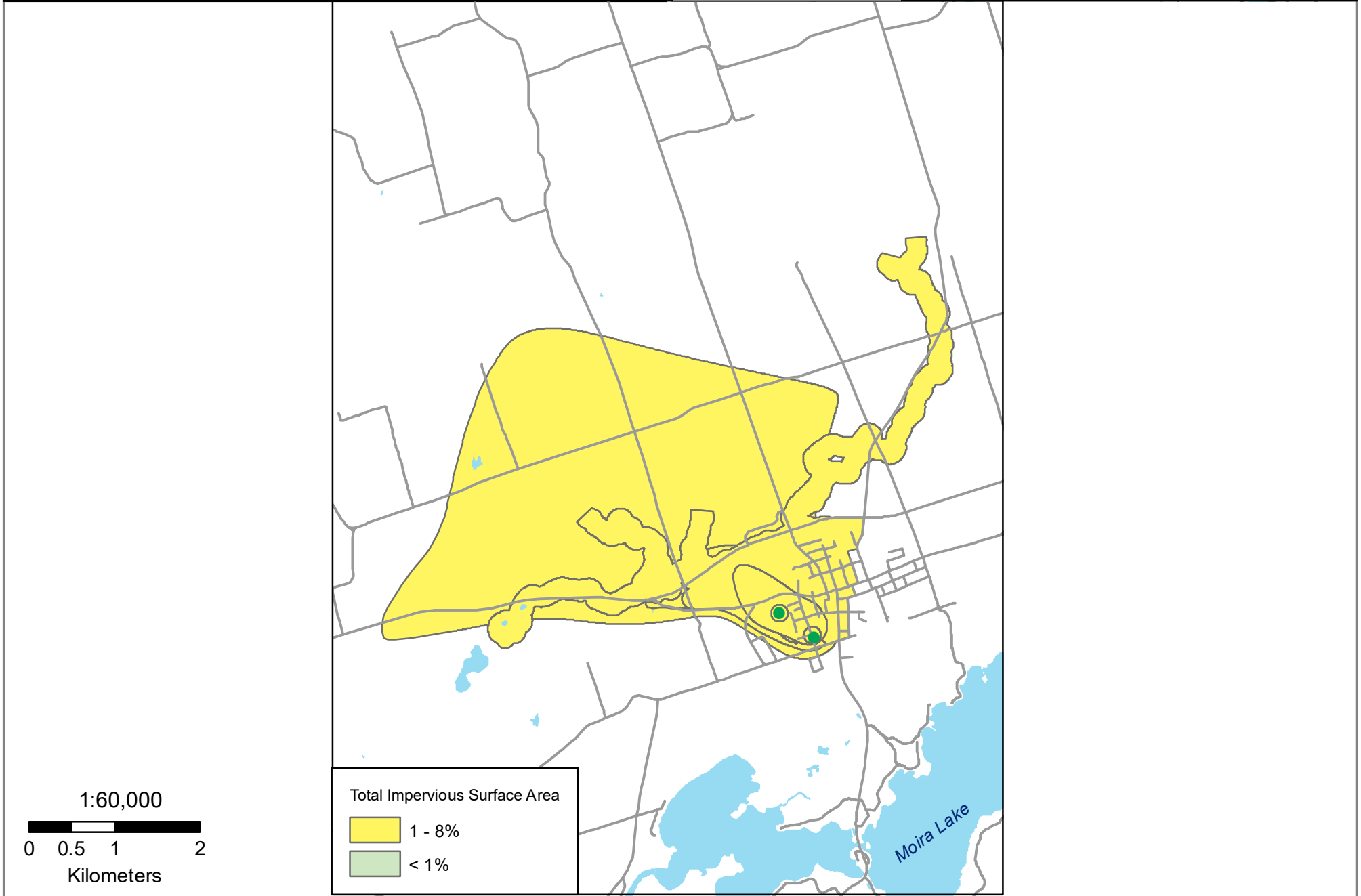
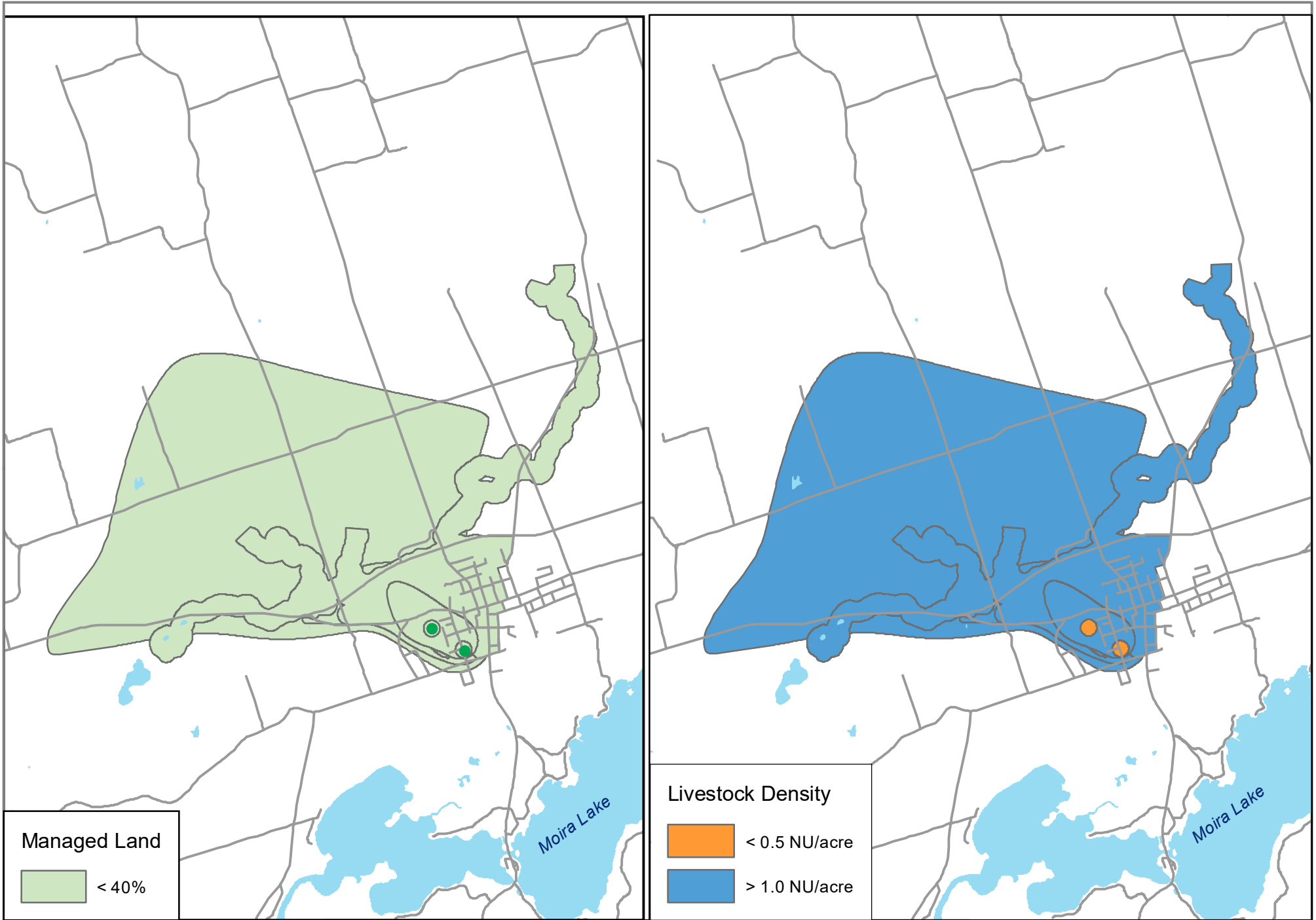
Digital Mapping Sources:
Base Map - Ontario Ministry of Natural Resources

This map is for illustrative purposes only. QC makes no warranty and assumes no liability whatsoever regarding the truth,
accuracy, currency, or completeness of this map or the associated data.

Legend

	Municipal Wells		Lakes		Vulnerability=8.1		Vulnerability=6
	Creeks		Vulnerability=10		Vulnerability=8		

Map 5.14 Madoc Vulnerability Scoring



Quinte
CONSERVATION

Moira River, Napanee Region and Prince Edward Region Watersheds.
 RR # 2, 2061 Old Highway # 2, Belleville, Ontario, K8N 4Z2.
 www.quinteconservation.ca, 613-968-3434

Produced by Quinte Conservation under license with the
 Ontario Ministry of Natural Resources. Copyright Quinte Conservation and
 the King's Printer for Ontario, 2023. Data is projected in NAD 83
 UTM Zone 18N.

Digital Mapping Sources:
 Base Map - Ontario Ministry of Natural Resources
 Monitoring Wells - Municipality of Marmora & Lake

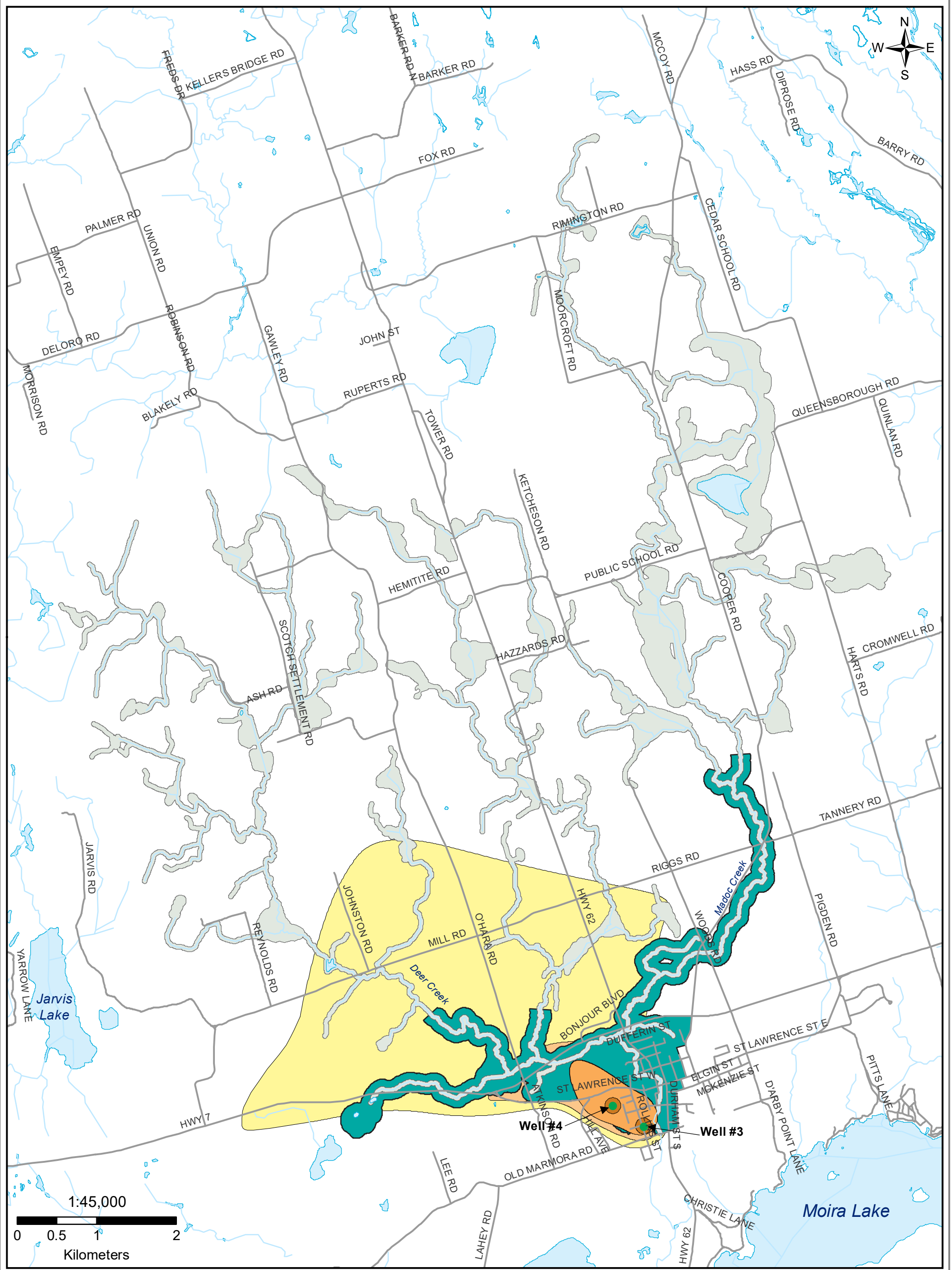
This map is for illustrative purposes only. QC makes no warranty, and assumes no liability whatsoever regarding the truth,
 accuracy, currency, or completeness of this map or the associated data.

Legend

● Municipal Well — Roads ■ Water Bodies

Map 5.15 Madoc Wellhead Protection Area

Managed Land, Livestock Density & Impervious Surface Area



Legend	● Municipal Wells	■ Lakes	■ WHPA C	■ WHPA - ICA
— Roads	■ WHPA A	■ WHPA D		
— Creeks	■ WHPA B	■ WHPA E		

Map 5.16 Madoc Wellhead Protection Area - Issues Contributing Area (WHPA - ICA)



Moira River, Napanee Region and Prince Edward Region Watersheds.
 RR # 2, 2061 Old Highway # 2, Belleville, Ontario, K8N 4Z2.
 www.quinteconservation.ca, 613-968-3434

Produced by Quinte Conservation under license with the Ontario Ministry of Natural Resources. Copyright Quinte Conservation and the Queen's Printer for Ontario, 2019. Data is projected in NAD 83 UTM Zone 18N.

Digital Mapping Sources:
 Base Map - Ontario Ministry of Natural Resources

This map is for illustrative purposes only. QC makes no warranty and assumes no liability whatsoever regarding the truth, accuracy, currency or completeness of this map or the associated data.