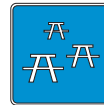


Vanderwater Conservation Area



This lovely outdoor spot is picturesquely located along the banks of the Moira River, where the water cascades over a series of limestone steps. The 15 km of trails explore a wide range of natural environments from mature cedar forests in the low lying areas to hardwood and coniferous forests that cover the slopes and high ground.

The Conservation Area is a popular destination each winter for cross-country skiers. A steep ridge runs the length of the property and several spots along the trails afford a scenic view of the land towards the west. Ski trails are not groomed.

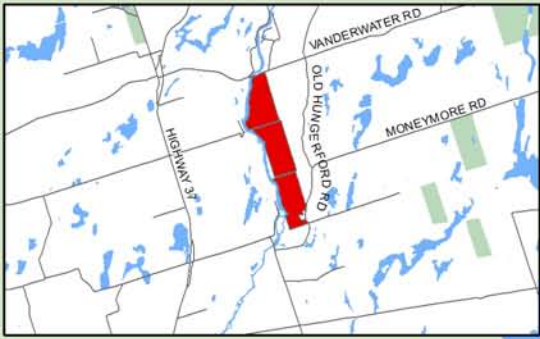
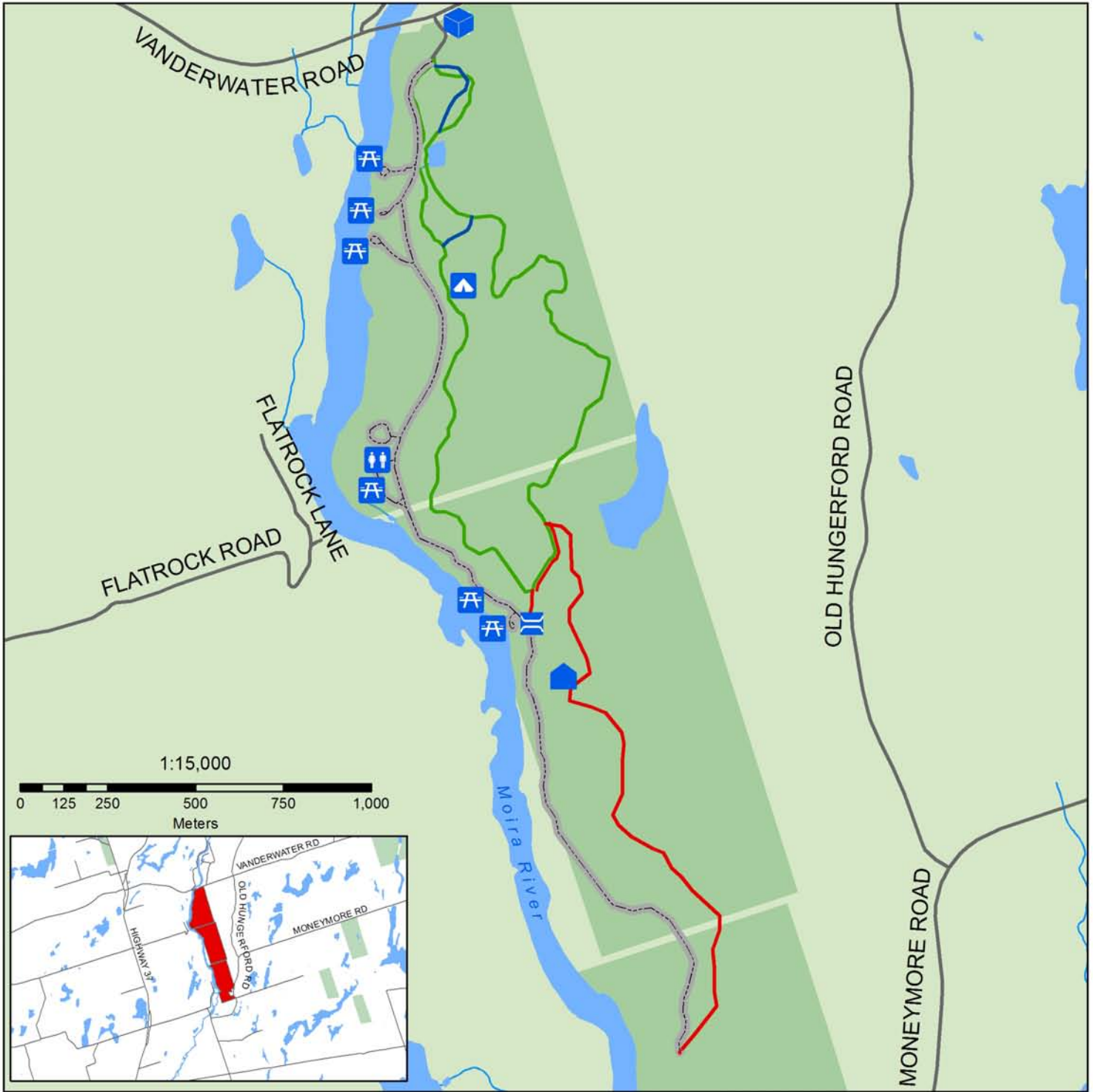
A Little History

This Conservation Area was set aside as a memorial to the late Colonel Roscoe Vanderwater, an enthusiastic conservationist, as well as the founder and first chairman of the Moira River Conservation Authority. The Conservation Area was opened in 1960.

Directions

The 257 hectare (635 acre) Vanderwater Conservation Area is located 3 km east of Thomasburg off Highway 37, at 512 Vanderwater Road.

Vanderwater Conservation Area Trail Map



**Quinte
CONSERVATION**

Moira River, Napanee Region and
Prince Edward Region Watersheds.
RR # 2, 2961 Old Highway # 2,
Belleville, Ontario, K8N 4Z2
www.quinteconservation.ca
613-968-3434

Produced by Quinte Conservation under license with the Ontario Ministry of
Natural Resources. Copyright Quinte Conservation and the Queen's
Printer for Ontario, 2010. Data is projected in NAD 83 UTM Zone 18N.
This map is for illustrative purposes only. QC makes no warranties, and
assumes no liability whatsoever regarding the truth, accuracy, or
completeness of the map and its contributing datasets.

Legend

- Road
- Internal Park Road ~ 3.7 km
- Green Trail ~ 4 km
- Red Trail ~ 2 km
- Green - Red Shared
- Blue Trail ~ 0.3 km
- Picnic Area
- Outhouse
- Shelter
- Park Workshop
- Boy Scouts Pavilion
- Gate
- QC Property
- Waterbody
- Watercourse