

Legend

- Climate Stations
- Highways
- Isolines (°C)
- Rivers
- Highway 401
- Lakes
- Populated Areas

Temperature (°C)

Value

High : 8

Low : 5

Map 3.1 Mean Annual Temperature (1971-2000)

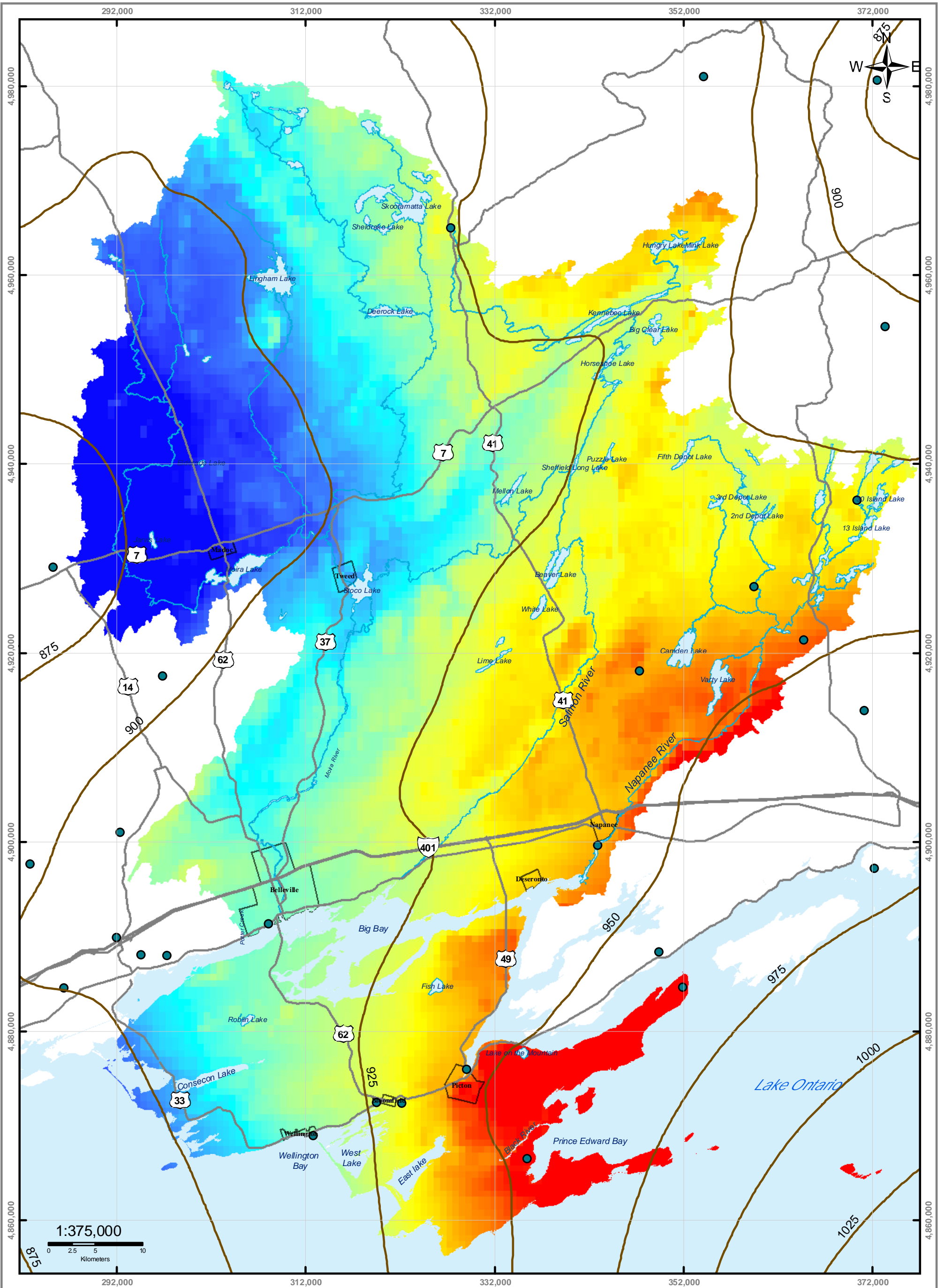


Quinte Conservation
 Moira River, Napanee Region and Prince Edward Region Watersheds.
 RR # 2, 2061 Old Highway # 2, Belleville, Ontario, K8N4Z2.
 www.quinteconservation.ca, 613-968-3434

Produced by Quinte Conservation March 27, 2010 under license with the Ontario Ministry of Natural Resources. Copyright Quinte Conservation and the Queen's Printer for Ontario, 2010. Data is projected in NAD83 UTM Zone 18N.

Digital Mapping Sources:
 Base Map - Ontario Ministry of Natural Resources
 Temperature - Waterloo Hydrogeologic Inc.

This map is for illustrative purposes only. QC makes no warranties and assumes no liability whatsoever regarding the truth, accuracy, currency, or completeness of the data.



Legend

- Climate Stations
- Precipitation Isolines (25mm)
- Highway 401
- Rivers
- Highways
- Lakes
- Populated Areas

Precipitation (mm)

Value

■ High : 1021

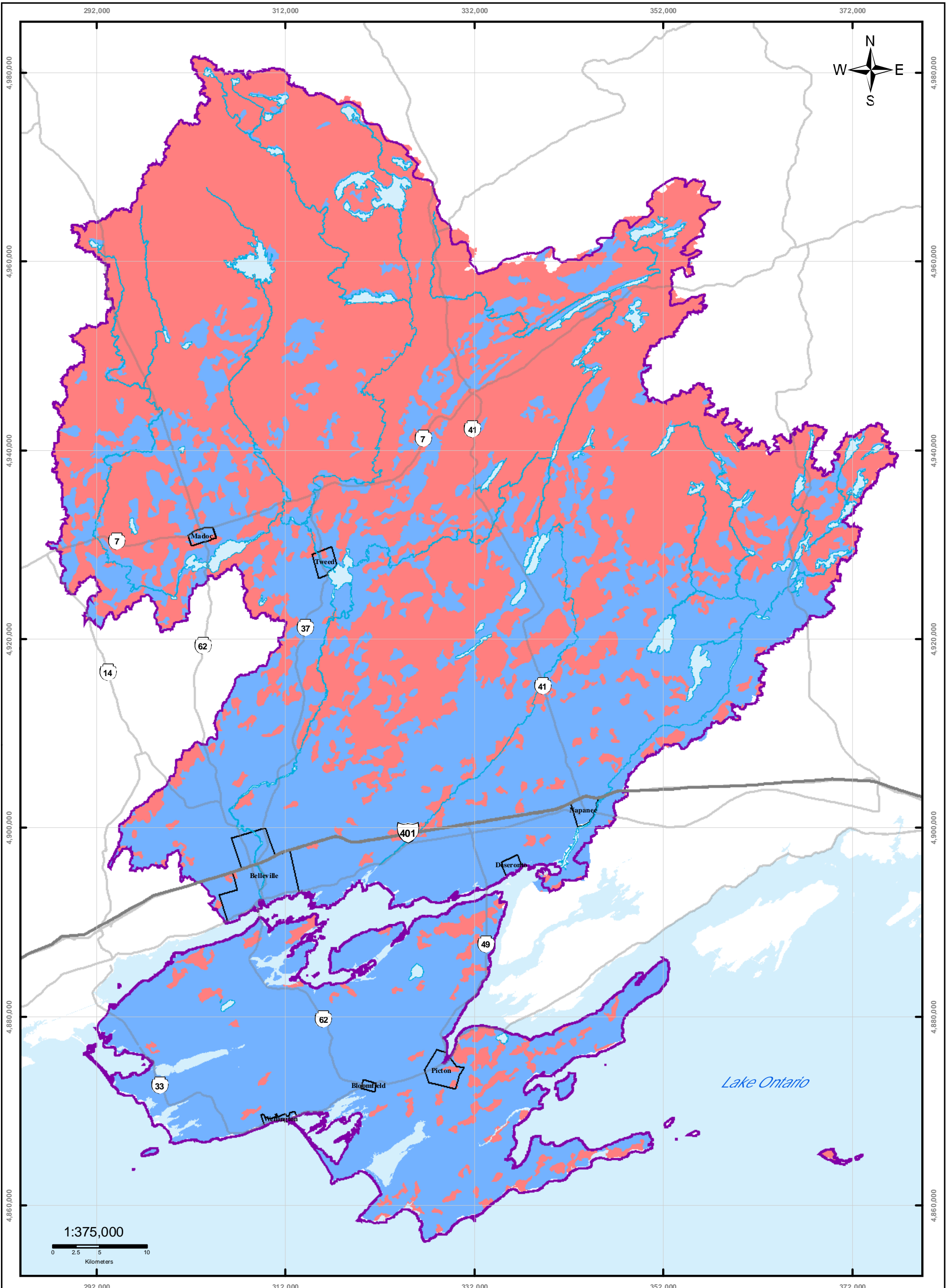
■ Low : 857

Map 3.2

Mean Annual Precipitation (1971-2000)



QUINTE CONSERVATION
 Moira River, Napanee Region and Prince Edward Region Watershed.
 RR # 2, 2061 Old Highway # 2, Belleville, Ontario, K8N 4Z2.
 www.quinteconservation.ca, 613-968-3434
 Produced by Quinte Conservation March 27, 2010 under license with the Ontario Ministry of Natural Resources. Copyright Quinte Conservation and the Queen's Printer for Ontario, 2010. Data is projected in NAD83 UTM Zone 18N.
 Digital Mapping Sources:
 Base Map - Ontario Ministry of Natural Resources
 Precipitation - Waterloo Hydrogeologic Inc.
 This map is for illustrative purposes only. QC makes no warranties and assumes no liability whatsoever regarding the truth, accuracy, currency, or completeness of the data.



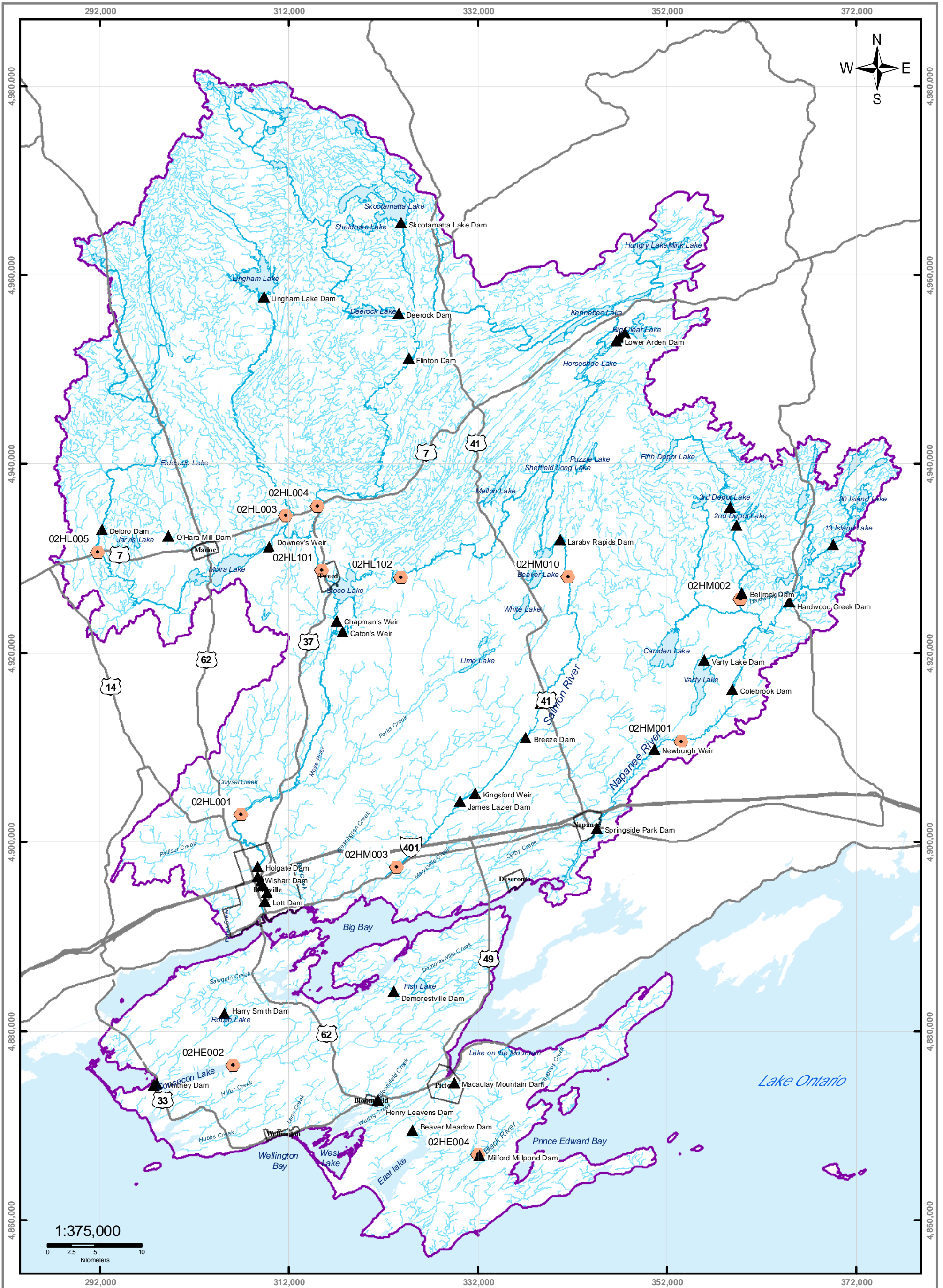
Moira River, Napanee Region and Prince Edward Region Watersheds.
 RR # 2, 2661 Old Highway # 2, Belleville, Ontario, K8N4Z2.
 www.quinteconservation.ca, 613-969-3434

Produced by Quinte Conservation March 27, 2010 under license with the
 Ontario Ministry of Natural Resources. Copyright Quinte Conservation and
 the Queen's Printer for Ontario, 2010. Data is projected in NAD83
 UTM Zone 18N.

Digital Mapping Sources:
 Base Map - Ministry of Natural Resources
 Land Cover - Waterloo Hydrogeologic Inc.

- Legend*
- Highway 401
 - Lakes
 - Low Land Cover (0.1)
 - Highways
 - QC Region
 - High Land Cover (0.2)
 - Rivers
 - Populated Areas

Map 3.3 Land Cover Classes



Legend

- ▲ Quinte Conservation Dams
- Stream Gauge Stations
- Highway 401
- Highways
- Rivers
- Lakes
- Quinte Region
- Populated Areas

Map 3.4

Dam Locations & Stream Gauge Stations

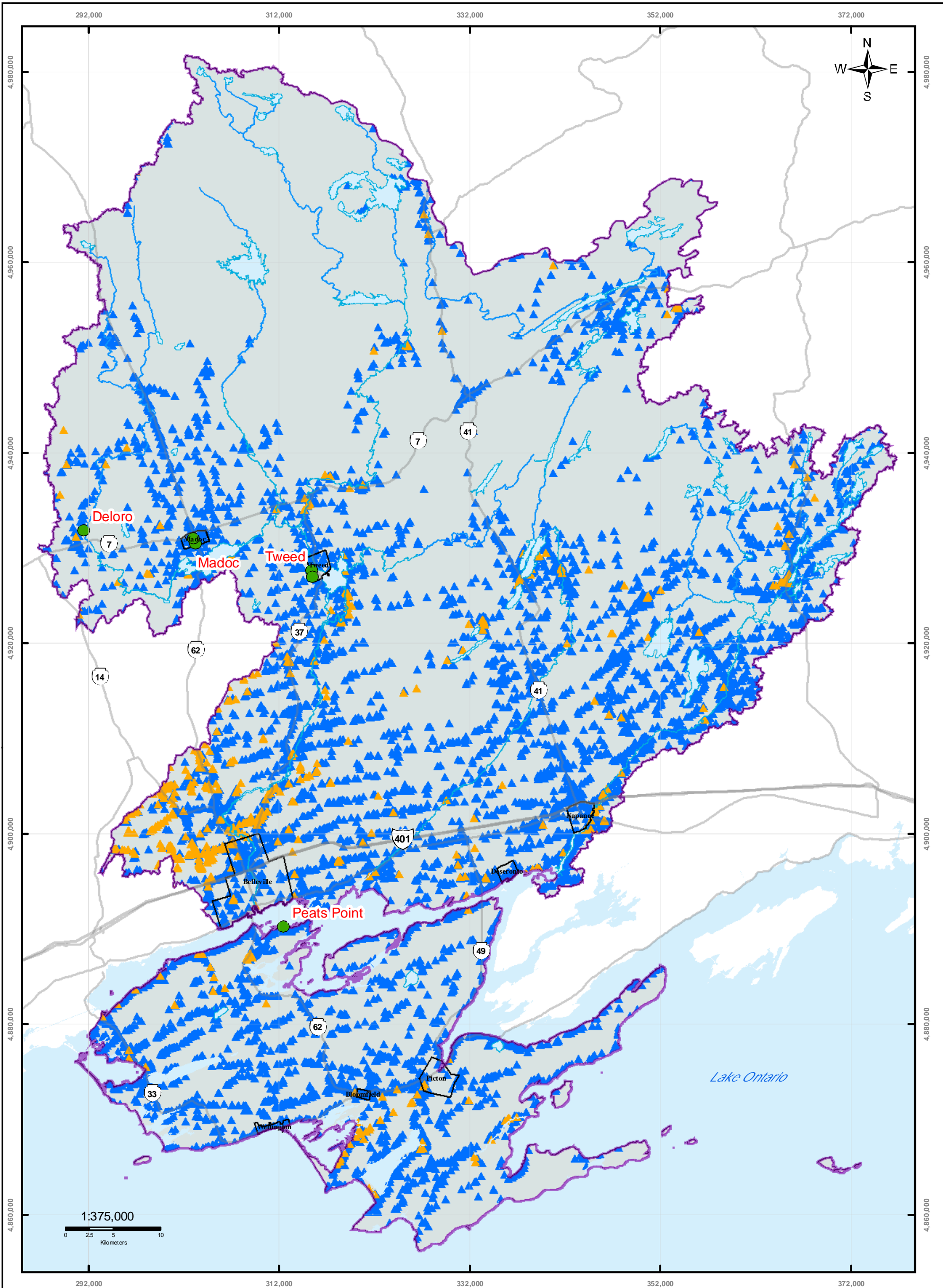


Moira River, Napanee Region and Prince Edward Region Watershed.
 RR # 2, 2061 Old Highway # 2, Belleville, Ontario, K8N4Z2.
 www.quinteconservation.ca, 613-968-3434

Produced by Quinte Conservation March 27, 2010 under license with the Ontario Ministry of Natural Resources. Copyright Quinte Conservation and the Queen's Printer for Ontario, 2010. Data is projected in NAD83 UTM Zone 18N.

Digital Mapping Sources:
 Base Map - Ontario Ministry of Natural Resources

This map is for illustrative purposes only. QC makes no warranties and assumes no liability whatsoever regarding the truth, accuracy, currency or completeness of the data.



QUINTE CONSERVATION

Mora River, Nipissing Region and Prince Edward Region Watersheds.
 RR # 2, 2061 Old Highway # 2, Belleville, Ontario K8N 4Z2.
 www.quinteconservation.ca, 613-968-3434

Produced by Quinte Conservation March 27 2010 under license with the
 Ontario Ministry of Natural Resources. Copyright Quinte Conservation and
 The Queen's Printer for Ontario, 2010. Data is projected in NAD 83
 UTM Zone 18N.

Digital Mapping Sources:
 Base Map - Ministry of Natural Resources
 Water Well Data - Dillon Ground Water Study & Ministry of Environment

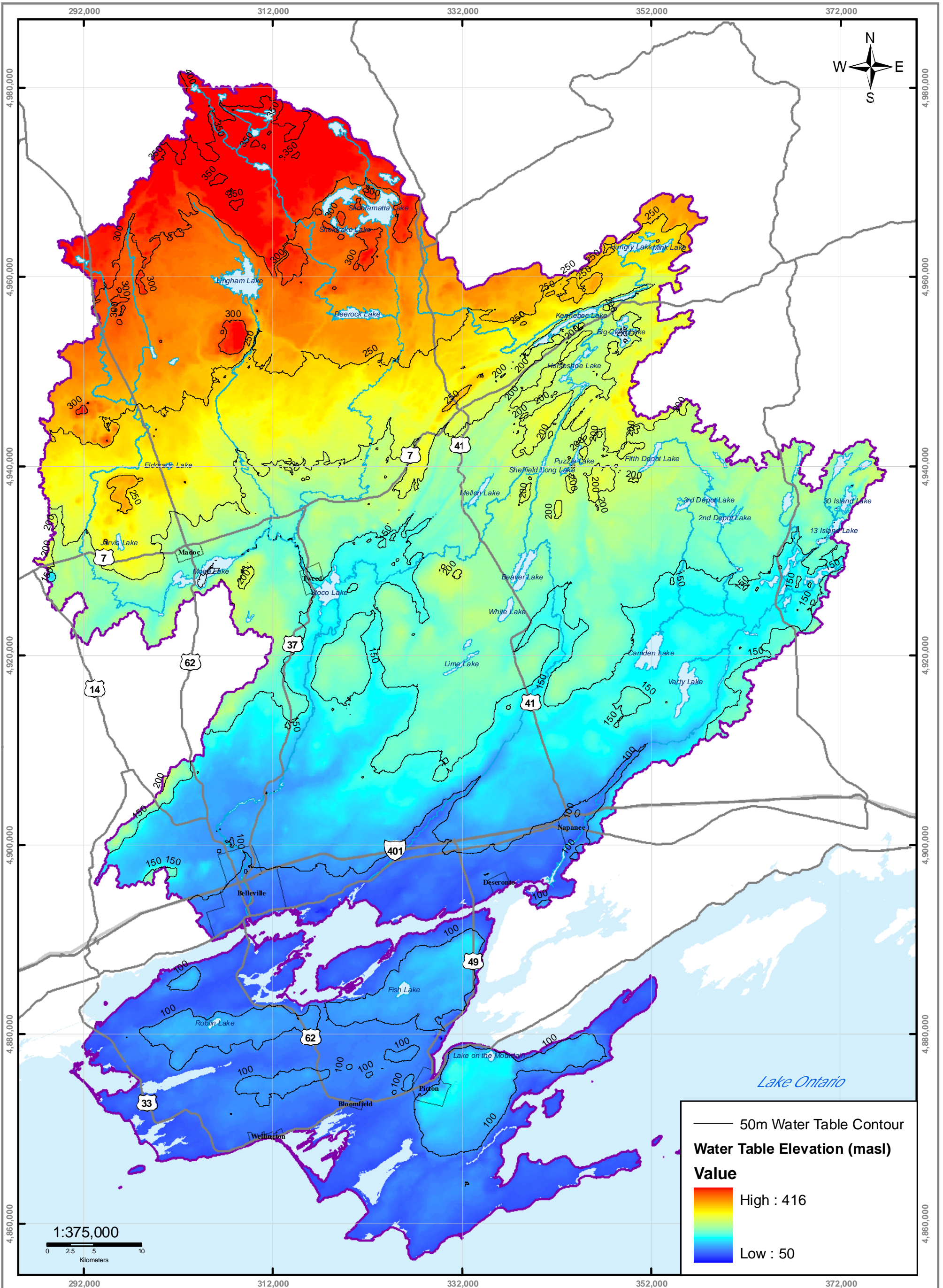
This map is for illustrative purposes only. QC makes no warranties or assurances as to the accuracy or reliability of the data, accuracy, content, or completeness of the map or the information on it.

Legend

	Municipal Wells		Highway 401		Lakes
	Bedrock Wells		Highways		Populated Areas
	Overburden Wells		Rivers		QC Region

Map 3.5 Water Well Locations*

*Only water wells with reliable UTM coordinates displayed on the map



QUINTE CONSERVATION

Mora River, Napanee Region and Prince Edward Region Watershed.
RR # 2, 2061 Old Highway # 2, Belleville, Ontario, K8N4Z2.
www.quinteconservation.ca, 613-968-3434

Produced by Quinte Conservation March 27, 2010 under license with the Ontario Ministry of Natural Resources. Copyright Quinte Conservation and the Queen's Printer for Ontario, 2010. Data is projected in NAD83 UTM Zone 18N.

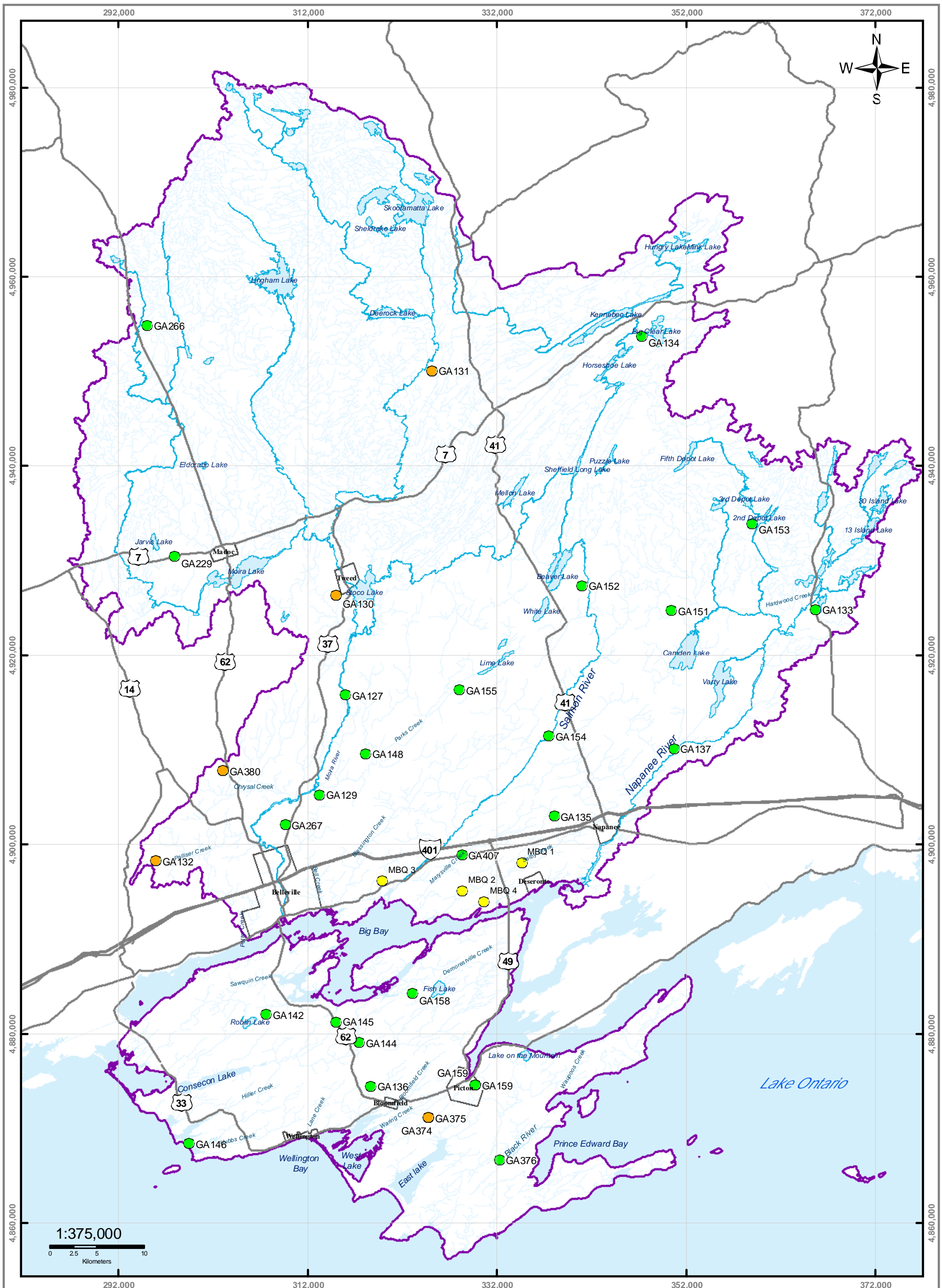
Digital Mapping Sources:
Base Map - Ontario Ministry of Natural Resources
Water Table Elevation - Dillon Consulting

This map is for illustrative purposes only. QC makes no warranties and assumes no liability whatsoever regarding the truth, accuracy, currency or completeness of the data.

Legend

- Highway 401
- Rivers
- Quinte Region
- Highways
- Lakes
- Populated Areas

Map 3.6 Water Table Elevation



QUINTE CONSERVATION

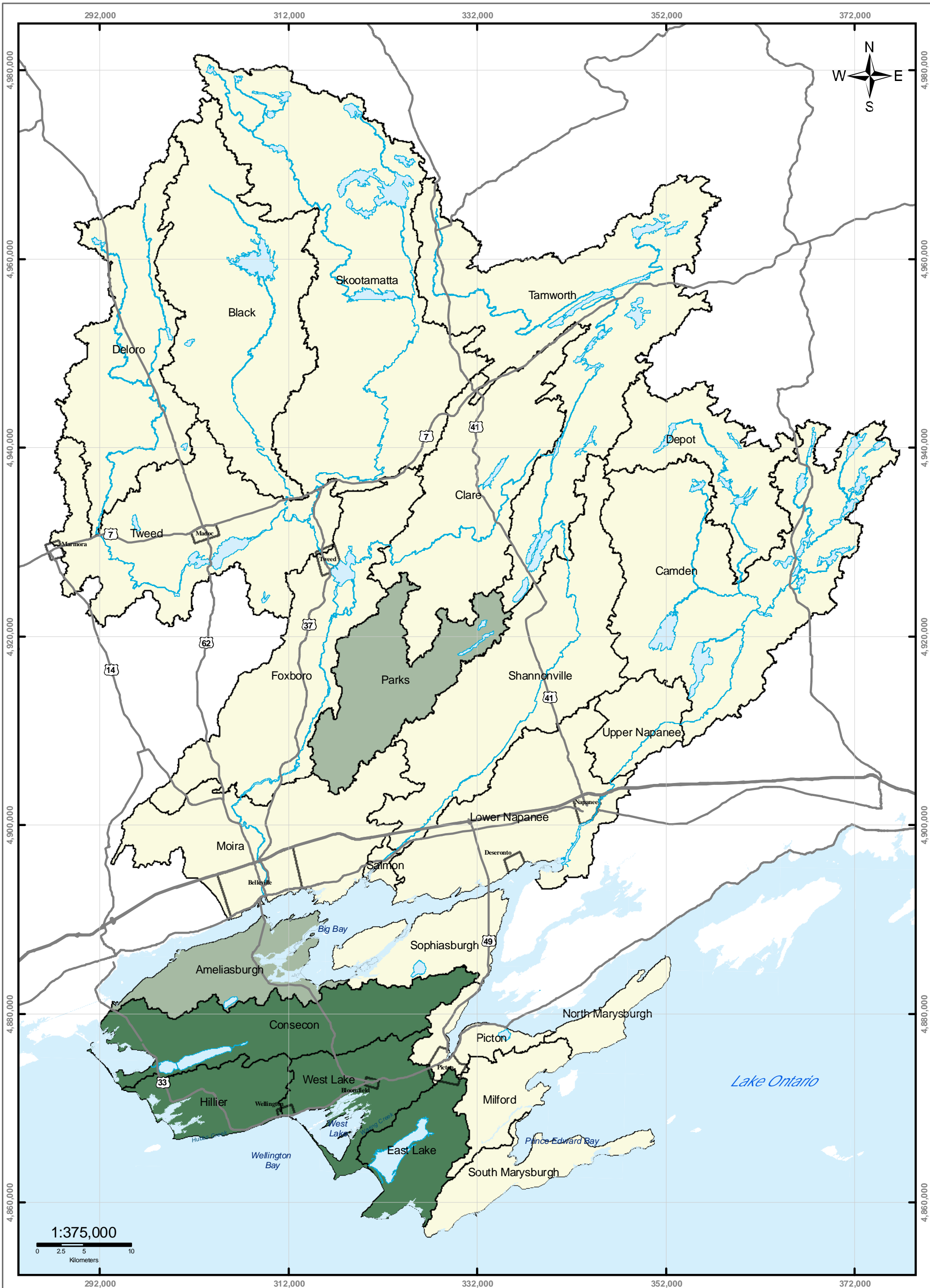
Moira River, Napanee Region and Prince Edward Region Watershed.
 RR # 2, 2061 Old Highway # 2, Belleville, Ontario, K8N 4Z2.
 www.quinteconservation.ca, 613-968-3434

Produced by Quinte Conservation March 27, 2010 under license with the Ontario Ministry of Natural Resources. Copyright Quinte Conservation and the Queen's Printer for Ontario, 2010. Data is projected in NAD83 UTM Zone 18N.
 Digital Mapping Sources: Ontario Ministry of Natural Resources
 PGMN Locations - QC

This map is for illustrative purposes only. QC makes no warranties and assumes no liability whatsoever regarding the truth, accuracy, currency, or completeness of the data.

- Legend*
- PGMN Wells
 - PGMN Wells in HVAs/SGRAs
 - Mohawk Monitoring Wells
 - Highway 401
 - Highways
 - Rivers
 - Lakes
 - Quinte Region
 - Populated Areas

Map 3.7 Quinte Monitoring Wells



Legend

- | | | | |
|-------------|--------|-------------------------|-------------|
| Highway 401 | Rivers | Potential Stress | Moderate |
| Highways | Lakes | Low | Significant |

Map 3.8 Potential Surface Water Stress



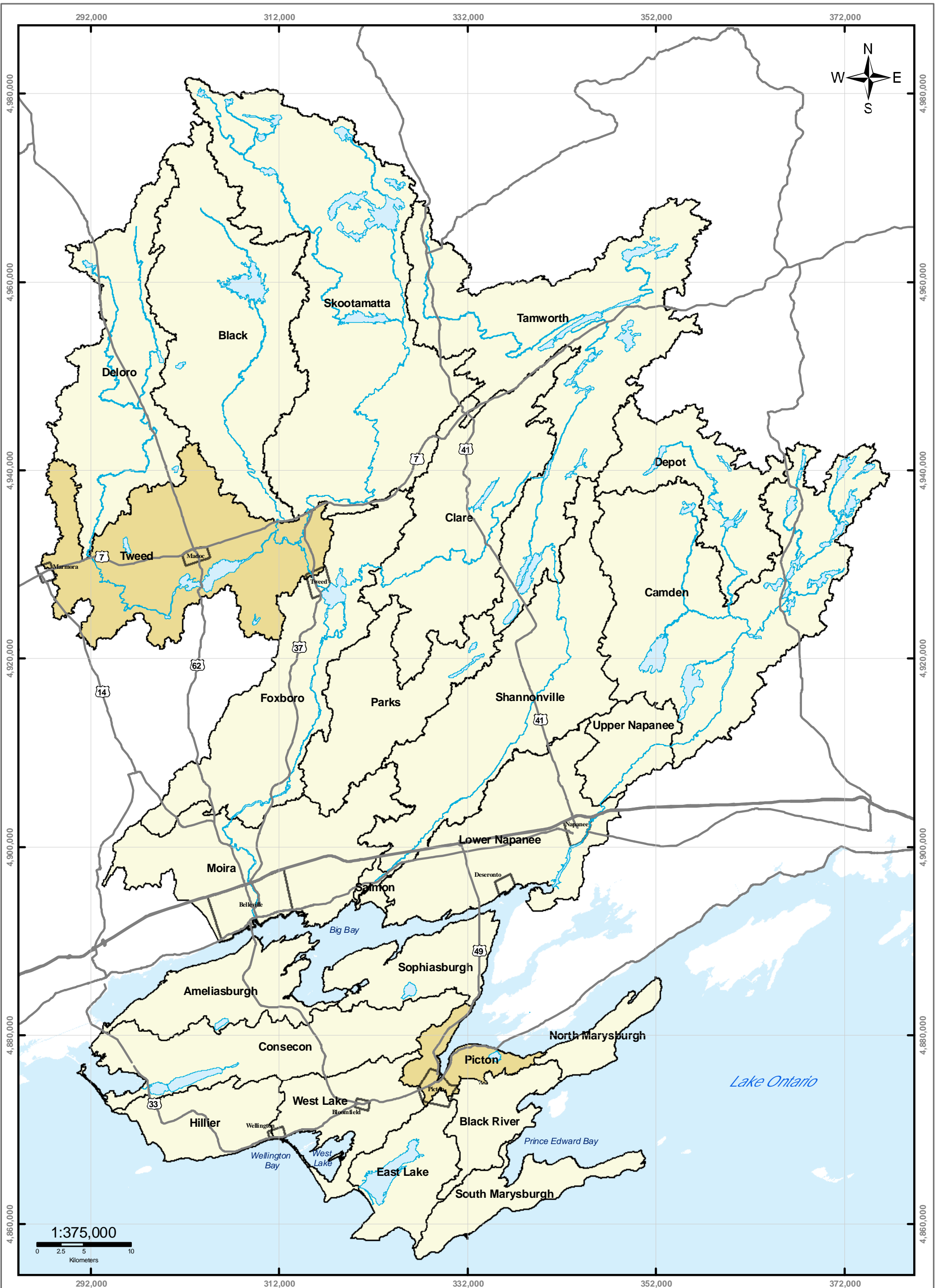
Moira River, Napanee Region and Prince Edward Region Watershed.
 RR # 2, 2061 Old Highway # 2, Belleville, Ontario, K8N4Z2.
 www.quinteconservation.ca, 613-968-3434

Produced by Quinte Conservation March 27, 2010 under license with the Ontario Ministry of Natural Resources. Copyright Quinte Conservation and the Queen's Printer for Ontario, 2010. Data is projected in NAD83 UTM Zone 18N.

Digital Mapping Sources:
 Base Map - Ontario Ministry of Natural Resources

This map is for illustrative purposes only. QC makes no warranties and assumes no liability whatsoever regarding the truth, accuracy, currency, or completeness of the data.

Y:\BWP_Data\Modem\7_APRR\Report_Files\1_2010\Map\Map_3_Potential_Surface_Water_Stress.mxd



Legend

- | | | | | |
|--|-------------|--|--------|-------------------------|
| | Highway 401 | | Rivers | Potential Stress |
| | Highways | | Lakes | |
| | | | | Low |
| | | | | |
| | | | | Moderate |

Map 3.9 Potential Groundwater Stress



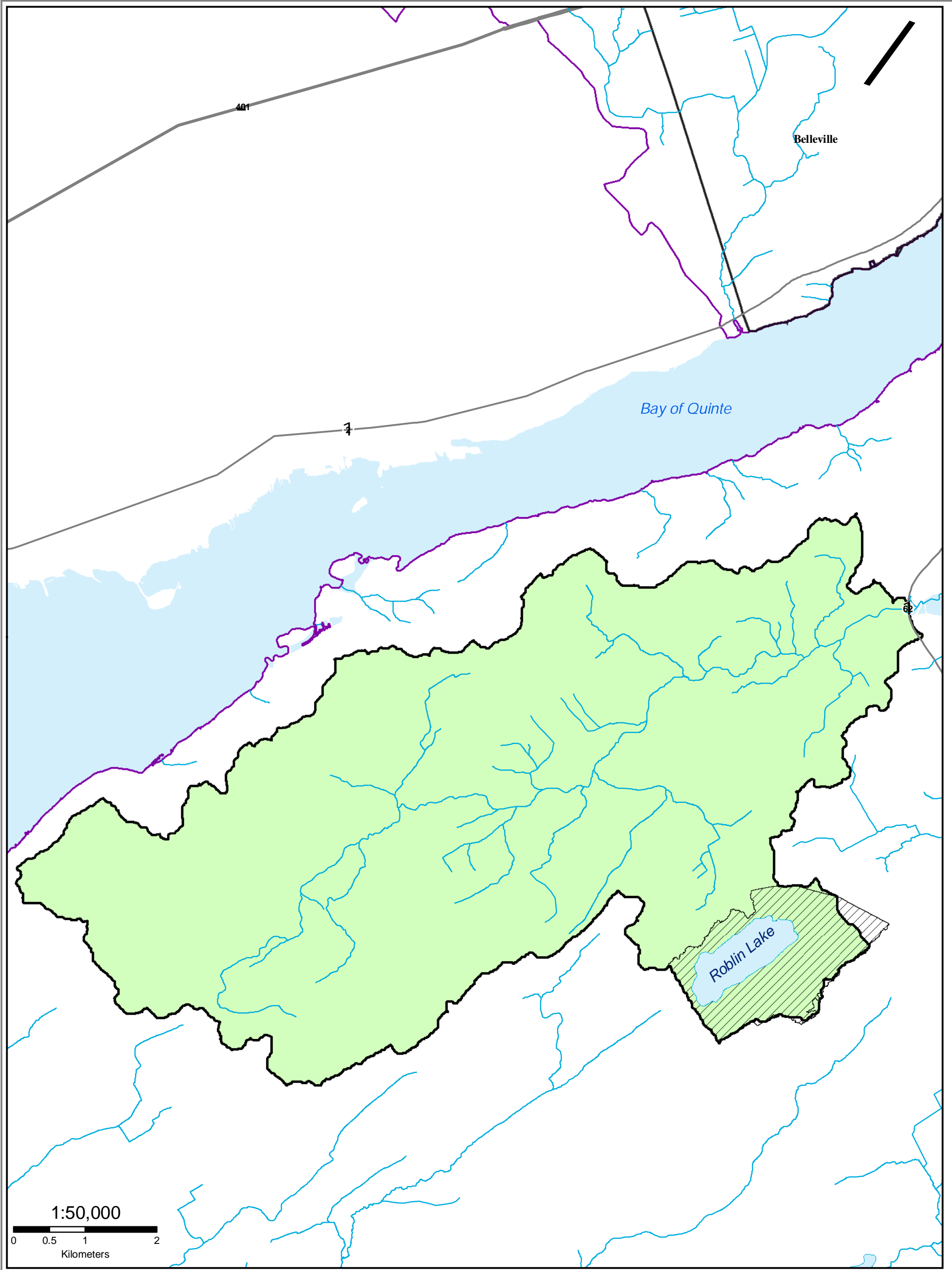
Moira River, Napanee Region and Prince Edward Region Watersheds.
 RR # 2, 2061 Old Highway # 2, Belleville, Ontario, K8N 4Z2.
 www.quinteconservation.ca, 613-968-3434

Produced by Quinte Conservation March 27, 2010 under license with the Ontario Ministry of Natural Resources. Copyright Quinte Conservation and the Queen's Printer for Ontario, 2010. Data is projected in NAD83 UTM Zone 18N.

Digital Mapping Sources:
 Base Map - Ontario Ministry of Natural Resources

This map is for illustrative purposes only. QC makes no warranties and assumes no liability whatsoever regarding the truth, accuracy, currency, or completeness of the data.

Y:\SWP_Data_Maps\17_APRR\Report_Files\1_2010\Map3_9_PotentialGroundwaterStress.mxd



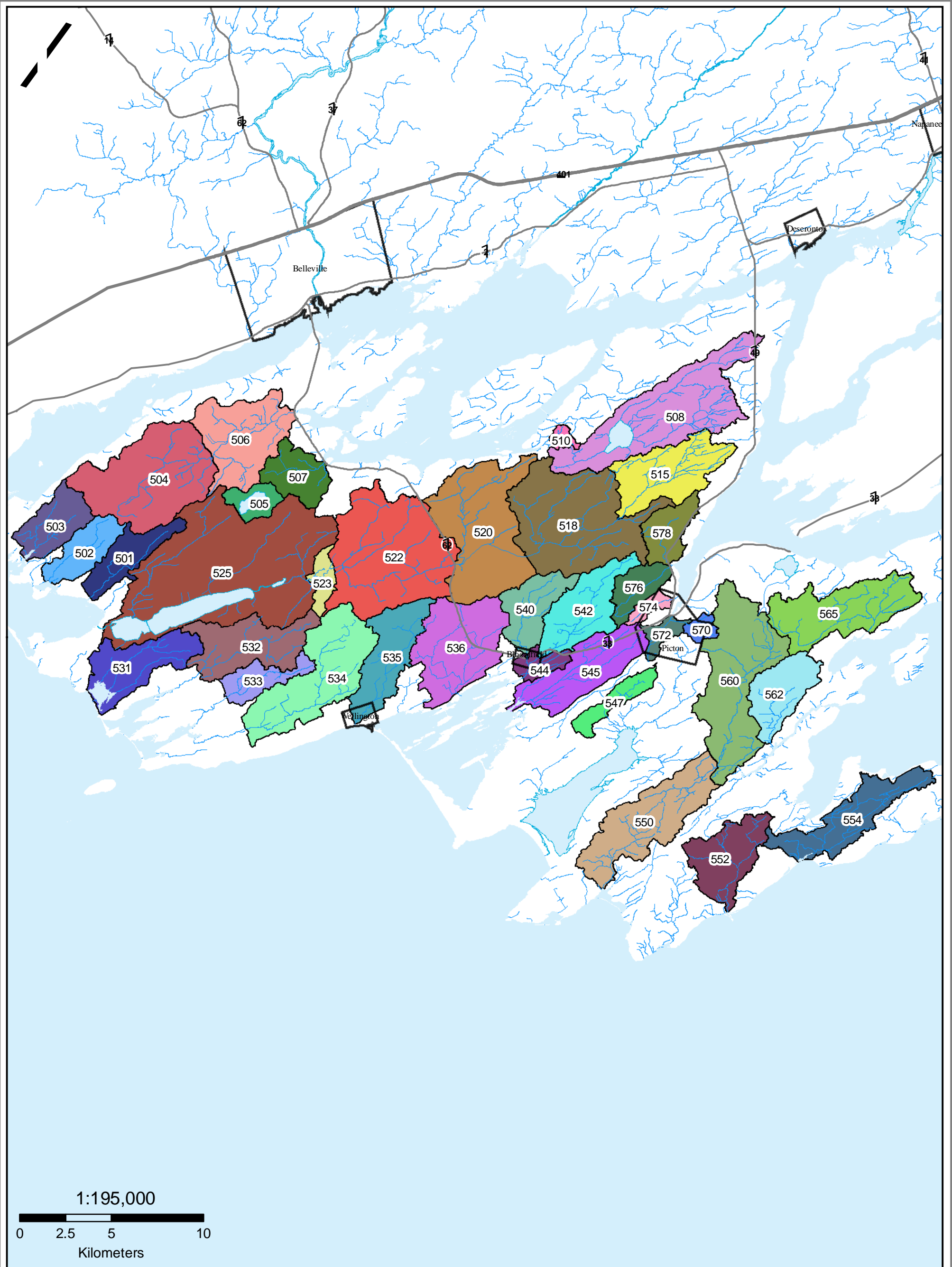
Molra River, Napanee Region and Prince Edward Region Watersheds.
 RR # 2, 2061 Old Highway # 2, Belleville, Ontario, K8N 4Z2.
 www.quinteconservation.ca, 613-968-3434
 Produced by Quinte Conservation March 27, 2010 under license with the
 Ontario Ministry of Natural Resources. Copyright Quinte Conservation and
 the Queen's Printer for Ontario, 2010. Data is projected in NAD 83
 UTM Zone 18N.
 Digital Mapping Sources:
 Base Map - Ontario Ministry of Natural Resources

Legend

- Highway 401 — Rivers □ Populated Areas ■ Sawgoin Creek Drainage Area
- Highways □ Lakes ▨ Roblin Lake Watershed

Map 3.10 Ameliasburgh Tier Two Study Area

This map is for illustrative purposes only. OC makes no warranties and assumes no liability whatsoever regarding the truth, accuracy, currency, or completeness of this map or the associated data.

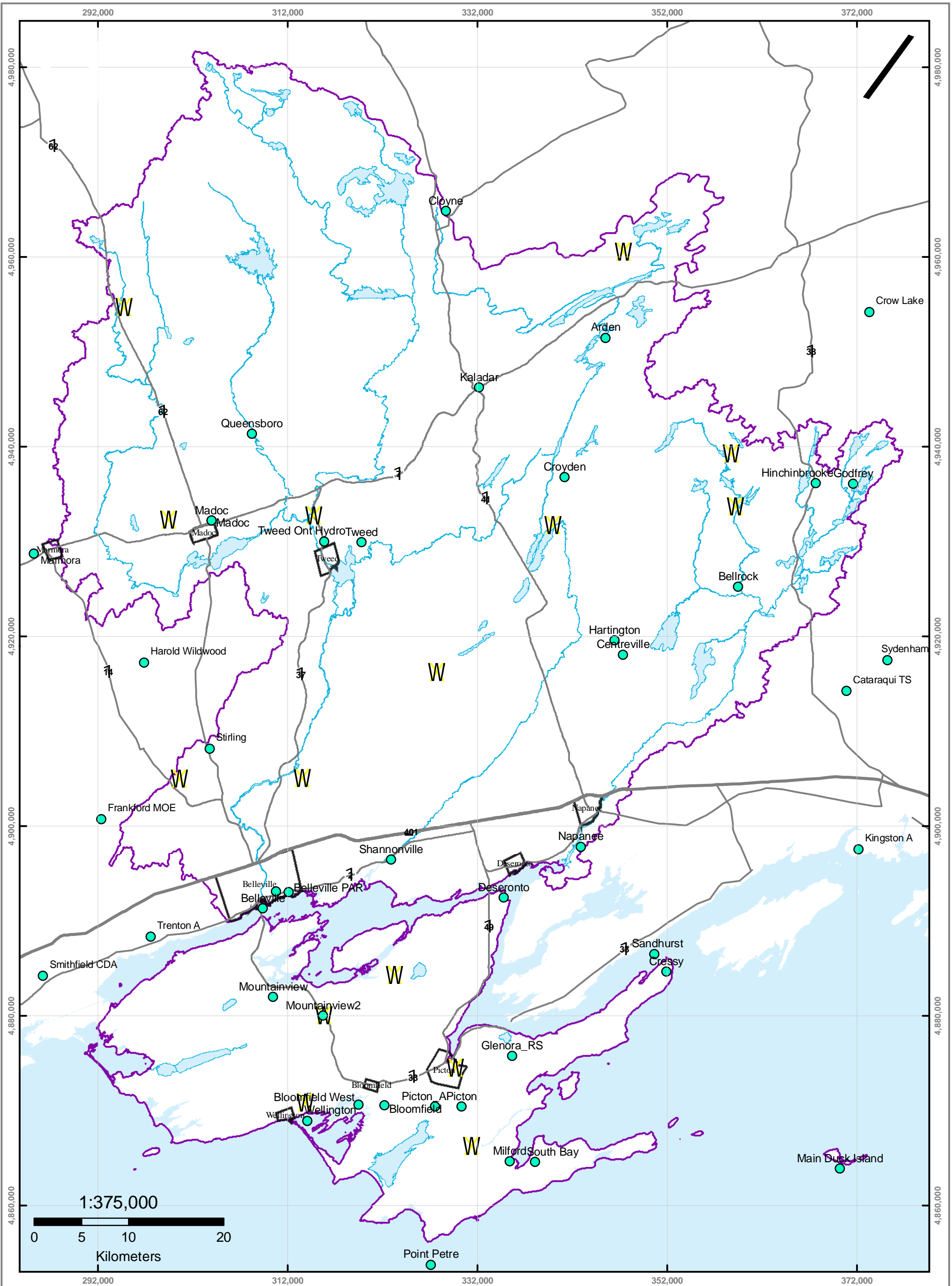


Molra River, Napanee Region and Prince Edward Region Watersheds.
 RR # 2, 2061 Old Highway # 2, Belleville, Ontario, K8N 4Z2.
 www.quinteconservation.ca, 613-968-3434
 Produced by Quinte Conservation March 27, 2010 under license with the
 Ontario Ministry of Natural Resources. Copyright Quinte Conservation and
 the Queen's Printer for Ontario, 2010. Data is projected in NAD 83
 UTM Zone 18N.
 Digital Mapping Sources:
 Base Map - Ontario Ministry of Natural Resources

- Legend**
- Highway 401
 - Highways
 - Rivers
 - Lakes
 - Populated Areas

Map 3.11 Prince Edward County Subcatchments for Surface Water Model

This map is for illustrative purposes only. QC makes no warranties and assumes no liability whatsoever regarding the truth, accuracy, currency, or completeness of this map or the associated data.



QUINTE CONSERVATION

Mira River, Napanee Region and Prince Edward Region Watersheds.
 RR # 2, 2061 Old Highway # 2, Belleville, Ontario, K8N 4Z2.
 www.quinteconservation.ca, 613-968-3434

Produced by Quinte Conservation March 27, 2010 under license with the Ontario Ministry of Natural Resources. Copyright Quinte Conservation and the Queen's Printer for Ontario, 2010. Data is projected in NAD 83 UTM Zone 18N.

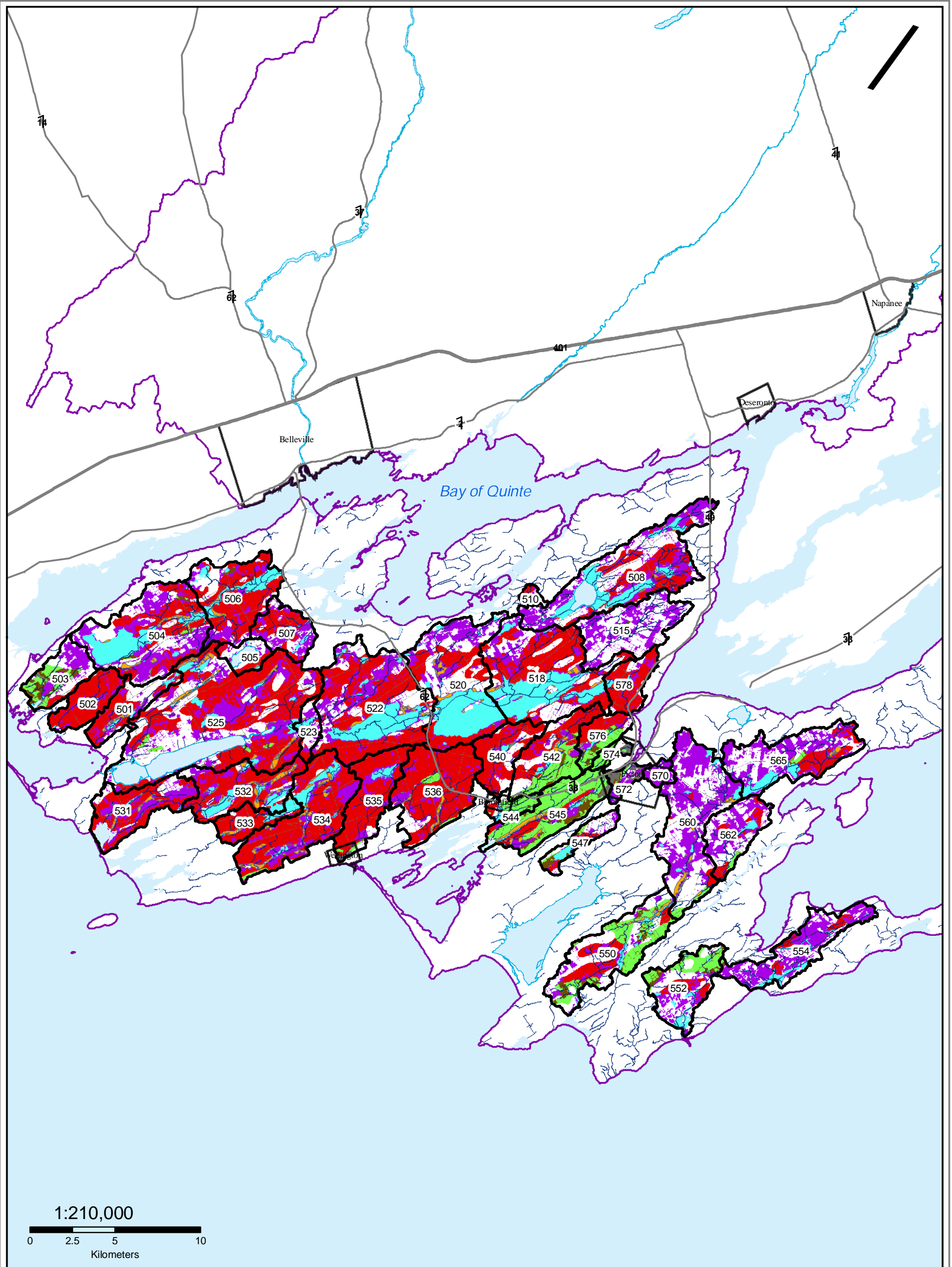
Digital Mapping Sources:
 Base Map - Ontario Ministry of Natural Resources
 Meteorological Stations - Environment Canada

This map is for illustrative purposes only. QC makes no warranties and assumes no liability whatsoever regarding the truth, accuracy, currency or completeness of this map or the associated data.

Legend

- Meteorological Stations
- W Snow Survey Sites
- Highway 401
- Highways
- Rivers
- Lakes
- Populated Areas

Map 3.12 Quinte Area Meteorological Stations



QUINTE CONSERVATION

Molra River, Napanee Region and Prince Edward Region Watersheds.
 RR # 2, 2061 Old Highway # 2, Belleville, Ontario, K8N 4Z2.
 www.quinteconservation.ca, 613-968-3434

Produced by Quinte Conservation March 27, 2010 under license with the Ontario Ministry of Natural Resources. Copyright Quinte Conservation and the Queen's Printer for Ontario, 2010. Data is projected in NAD 83 UTM Zone 18N.

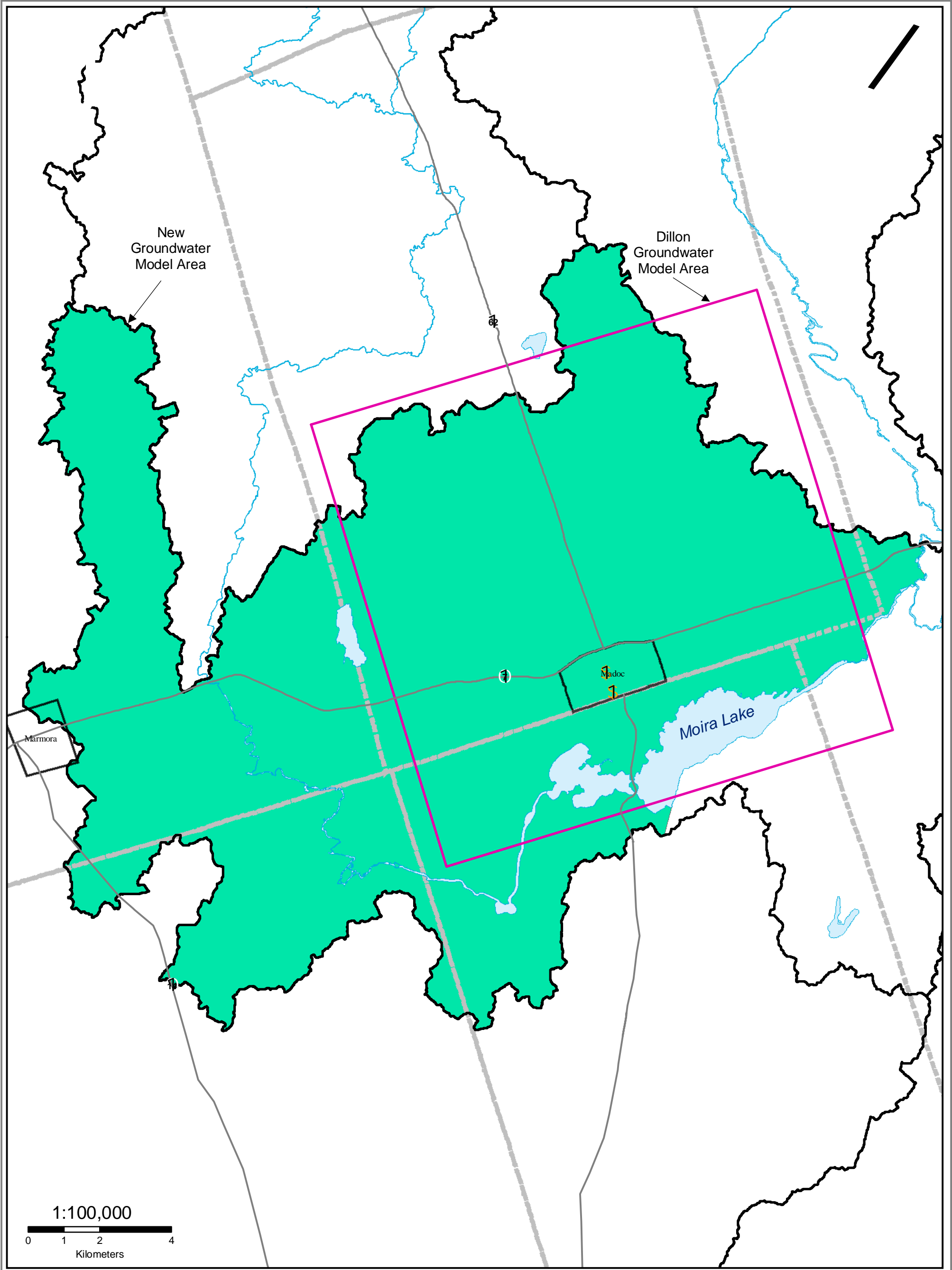
Digital Mapping Sources:
 Base Map - Ontario Ministry of Natural Resources

This map is for illustrative purposes only. QC makes no warranties and assumes no liability whatsoever regarding the truth, accuracy, currency, or completeness of this map or the associated data.

Legend

- Highway 401
- Highways
- Rivers
- Lakes
- Populated Areas
- RU 1 Impervious Surfaces (Includes Exposed Bedrock Areas)
- RU 2 Open Water (Direct Contribution to Lakes)
- RU 3 Other Lakes
- RU 4 Wetland or Other Flood Area
- RU 5 Low Veg Cover on Thin Soil (Bedrock, Bottom Land, Muck, & Peat)
- RU 6 Low Veg Cover on Clays, Clay Loams, & Loam Sands
- RU 7 Low Veg Cover on Loamy sands, Sands, & Sandy Loams
- RU 8 High Veg Cover on Slow Infiltration Soils
- RU 9 High Veg Cover on Fast Infiltration Soils
- PEC Subcatchments

Map 3.13
Hydrologic Response Units for Prince Edward County

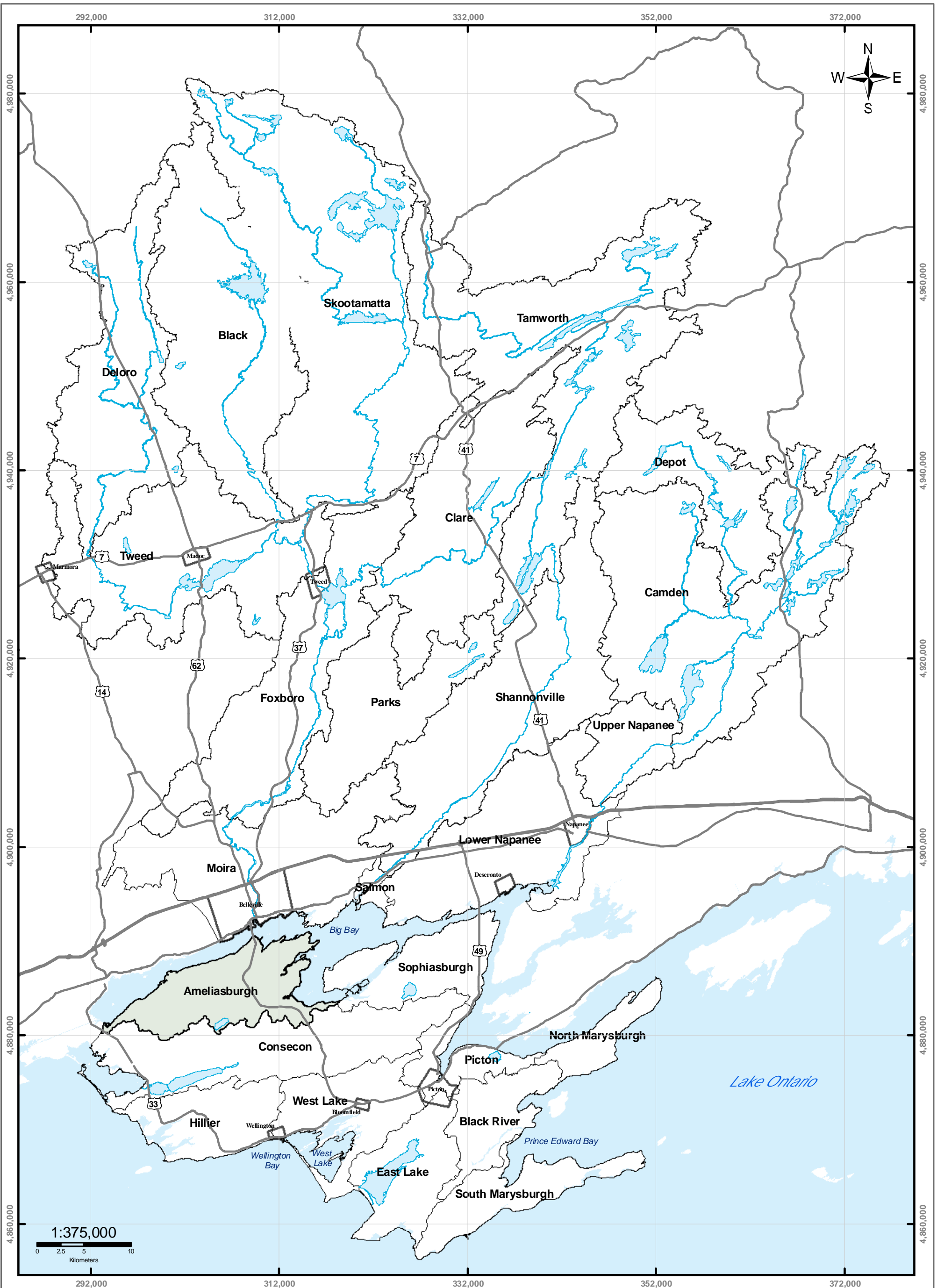


Moira River, Napanee Region and Prince Edward Region Watersheds.
 RR # 2, 2061 Old Highway # 2, Belleville, Ontario, K8N 4Z2.
 www.quinteconservation.ca, 613-968-3434
 Produced by Quinte Conservation March 27, 2010 under license with the
 Ontario Ministry of Natural Resources. Copyright Quinte Conservation and
 the Queen's Printer for Ontario, 2010. Data is projected in NAD 83
 UTM Zone 18N.
 Digital Mapping Sources:
 Base Map - Ontario Ministry of Natural Resources

Legend

- | | | | | |
|------------------------|---------------|----------|---------------------------------|------------------------------|
| Municipal Wells | — Highway 401 | — Rivers | □ Populated Areas | ■ New Groundwater Model Area |
| ⌘ Madoc Wells | — Highways | ■ Lakes | □ Dillon Groundwater Model Area | ⋯ Township Boundaries |

Map 3.14 Groundwater Model Study Area



Legend

- Highway 401
- Rivers
- Highways
- Lakes
- Potential Stress**
- Low
- Tier1 Evaluated

Map 3.15 Tier 2 Potential Surface Water Stress



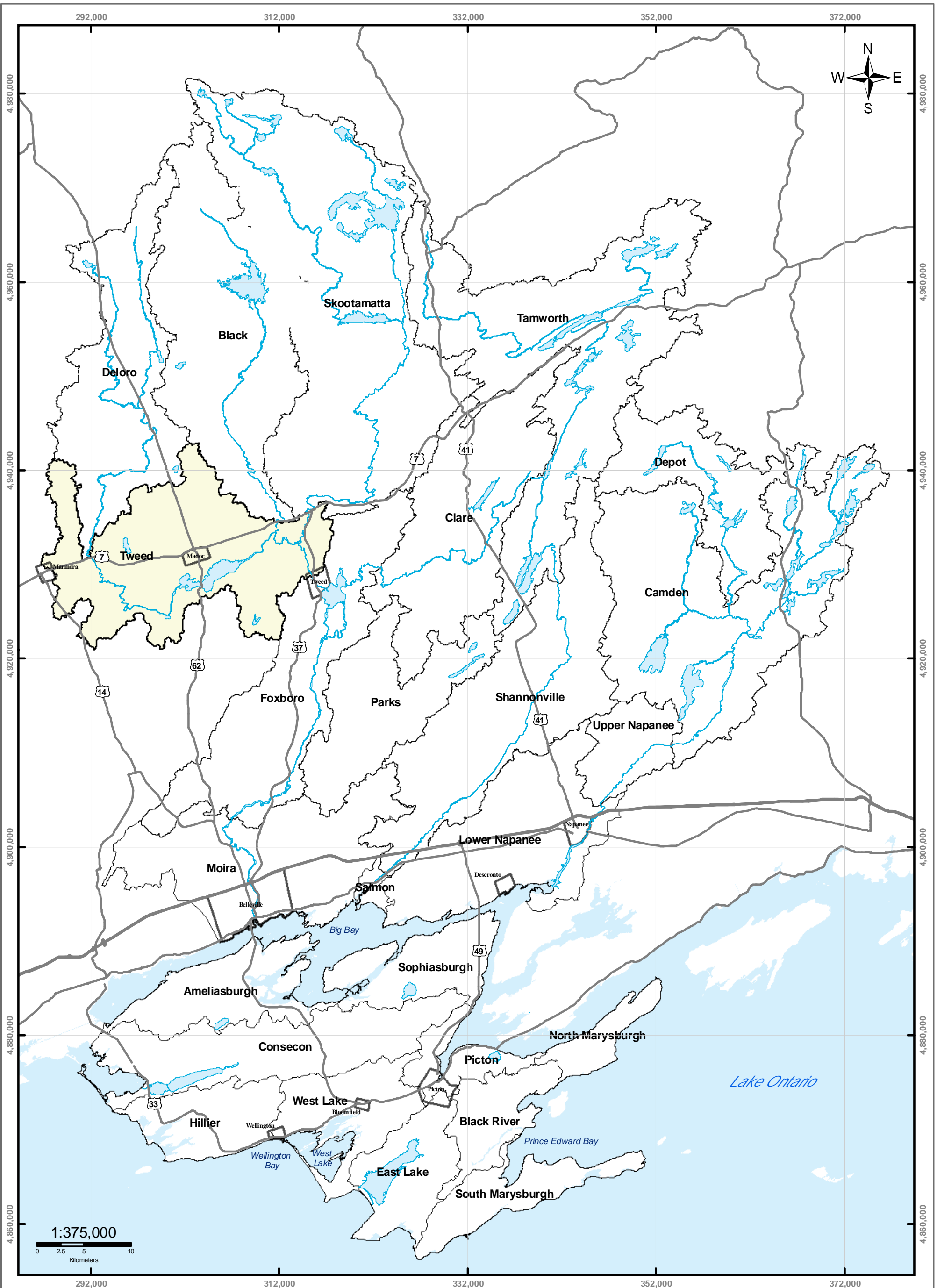
Moira River, Napanee Region and Prince Edward Region Watershed.
 RR # 2, 2061 Old Highway # 2, Belleville, Ontario, K8N 4Z2.
 www.quinteconservation.ca, 613-968-3434

Produced by Quinte Conservation March 27, 2010 under license with the Ontario Ministry of Natural Resources. Copyright Quinte Conservation and the Queen's Printer for Ontario, 2010. Data is projected in NAD83 UTM Zone 18N.

Digital Mapping Sources:
 Base Map - Ontario Ministry of Natural Resources

This map is for illustrative purposes only. QC makes no warranties and assumes no liability whatsoever regarding the truth, accuracy, currency, or completeness of the data.

Y:\SWP_Data_Maps\7_APRR\Report_Files\1_2010\Map\Map_15_T2_S.W. Stress.mxd



Legend

- Highway 401
- Rivers
- Highways
- Lakes
- Potential Stress**
- Low
- Tier1 Evaluated

Map 3.16 Tier 2 Potential Groundwater Stress



Moira River, Napanee Region and Prince Edward Region Watershed.
 RR # 2, 2061 Old Highway # 2, Belleville, Ontario, K8N 4Z2.
 www.quinteconservation.ca, 613-968-3434

Produced by Quinte Conservation March 27, 2010 under license with the Ontario Ministry of Natural Resources. Copyright Quinte Conservation and the Queen's Printer for Ontario, 2010. Data is projected in NAD83 UTM Zone 18N.

Digital Mapping Sources:
 Base Map - Ontario Ministry of Natural Resources

This map is for illustrative purposes only. QC makes no warranties and assumes no liability whatsoever regarding the truth, accuracy, currency, or completeness of the data.

Y:\BWP_Data\Modem\7_APRR\Report_Files\1_2010\Map\Map_05_T2_S.W. Stress.mxd