

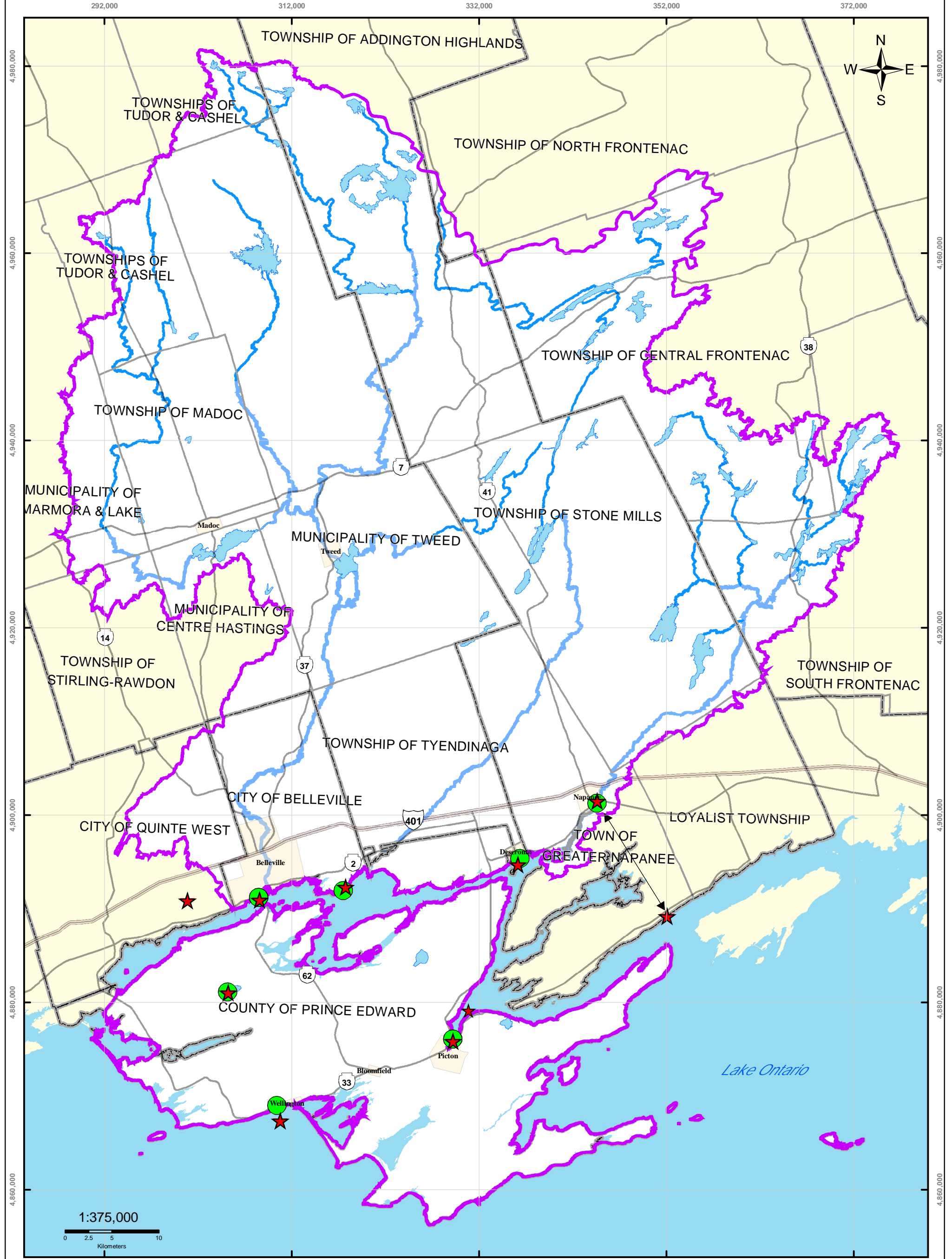
Molra River, Napanee Region and Prince Edward Region Watersheds.
 RR # 2, 2061 Old Highway # 2, Belleville, Ontario, K8N 4Z2.
 www.quintecconservation.ca, 613-968-3434
 Produced by Quinte Conservation March 27, 2008 under license with the
 Ontario Ministry of Natural Resources. Copyright Quinte Conservation and
 the Queen's Printer for Ontario, 2008. Data is projected in NAD 83
 UTM Zone 18N.
 Digital Mapping Sources:
 Base Map - Ontario Ministry of Natural Resources

Legend

- ★ Municipal Well
- 100m
- 10 year
- 2 year
- 25 year

Map 31 Deloro WHPA

This map is for illustrative purposes only. QC makes no warranties and assumes no liability whatsoever regarding the truth, accuracy, currency, or completeness of this map or the associated data.



Moira River, Napanee Region and Prince Edward Region Watersheds.
 RR # 2, 2061 Old Highway # 2, Belleville, Ontario, K8N 4Z2
 www.quinteconservation.ca, 613-968-3434

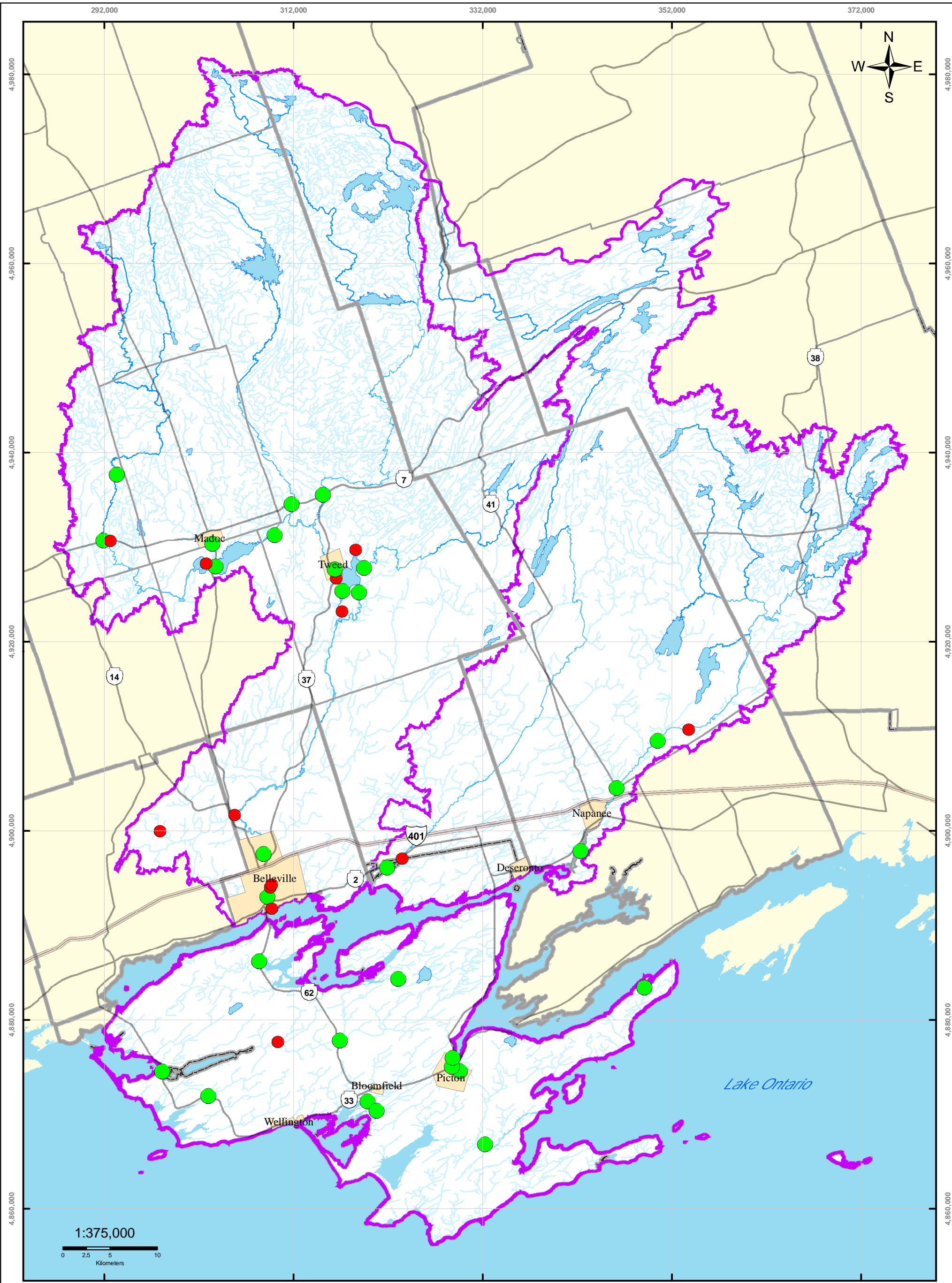
Produced by Quinte Conservation March 27, 2008 under license with the Ontario Ministry of Natural Resources. Copyright Quinte Conservation and the Queen's Printer for Ontario, 2008. Data is projected in NAD 83 UTM Zone 18N.

Digital Mapping Sources:
 Base Map - Ontario Ministry of Natural Resources
 Drinking Water Plant/Intakes - Ministry of the Environment
 This map is for illustrative purposes only. QC makes no warranty and assumes no liability whatsoever regarding the truth, accuracy, currency, or completeness of the data or information shown.

Legend

- Municipal Drinking Water Plants
- Municipal Drinking Water Intakes
- Highway 401
- Highways
- Rivers
- Lakes
- Populated Areas
- County Boundaries
- Township Boundaries
- QC Region

Map 32 Surface Water Sources



QUINTE CONSERVATION

Moira River, Napanee Region and Prince Edward Region Watersheds.
RR # 2, 2061 Old Highway # 2, Belleville, Ontario, K8N 4Z2.
www.quinteconservation.ca, 613-968-3434

Produced by Quinte Conservation March 27, 2008 under license with the Ontario Ministry of Natural Resources. Copyright Quinte Conservation and the Queen's Printer for Ontario, 2008. Data is projected in NAD 83 UTM Zone 18N.

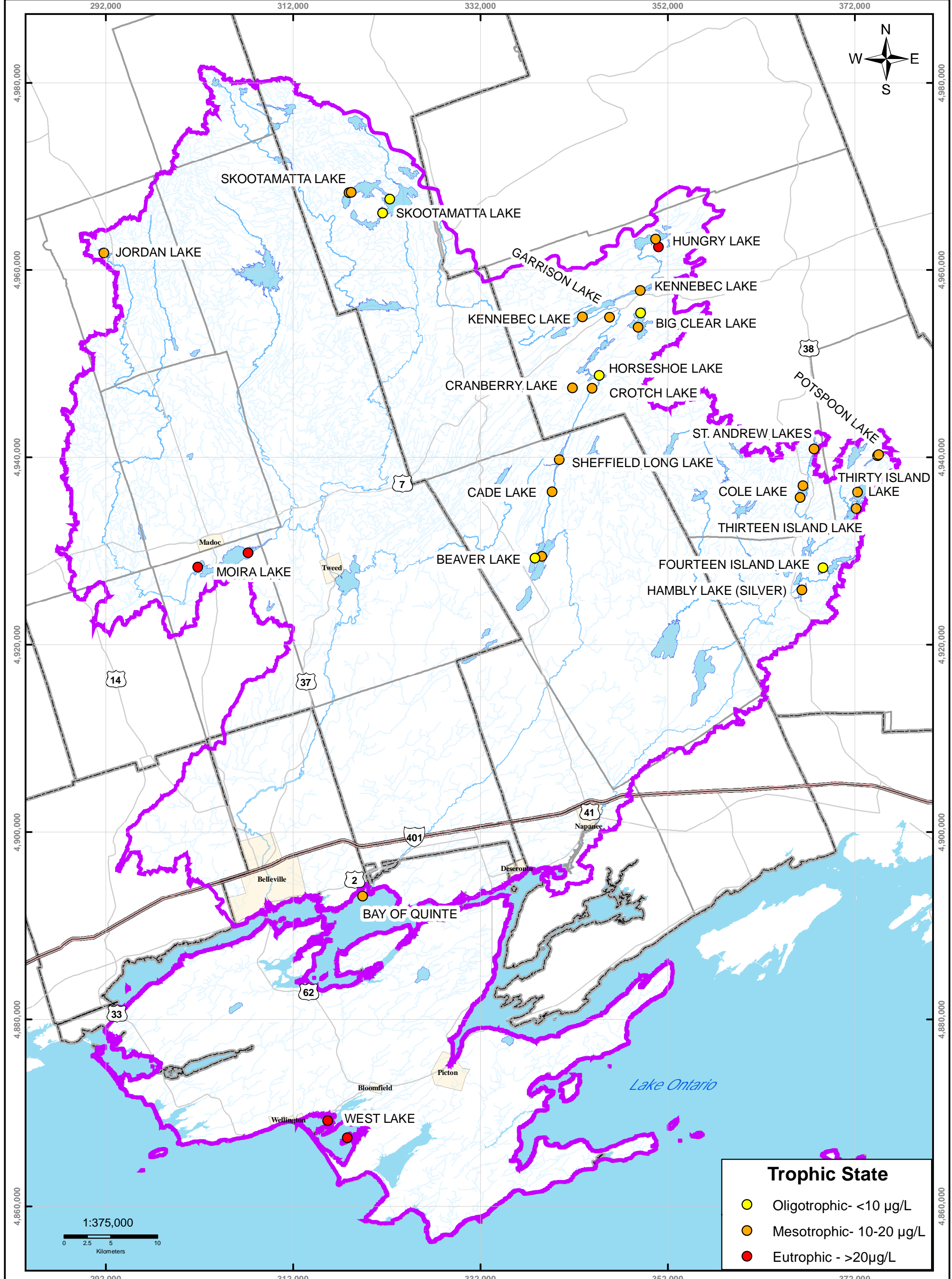
Digital Mapping Sources:
Base Map - Ontario Ministry of Natural Resources
PWQMN Coordinates - MOE

Legend

- | | | | | |
|--------------------|---------------|----------|-----------------------|---------------------|
| PWQMN Sites | — Highway 401 | — Rivers | ▭ QC Region | ▭ County Boundaries |
| ● Current | — Highways | ▭ Lakes | ▭ Township Boundaries | ▭ Populated Areas |
| ● Discontinued | | | | |

Map 33 Provincial Water Quality Monitoring Network (PWQMN) Stream and River Sites

This map is for informational purposes only. It is not intended to be used as a legal document. The map and associated data are the property of Quinte Conservation and are provided under license to the Ontario Ministry of Natural Resources.



Trophic State

- Oligotrophic- <10 µg/L
- Mesotrophic- 10-20 µg/L
- Eutrophic - >20µg/L

Legend

	Highway 401		Rivers		Populated Areas		Township Boundaries
	Highways		Lakes		Quinte Watersheds		County Boundaries

Map 34 Ontario Lake Partner Program

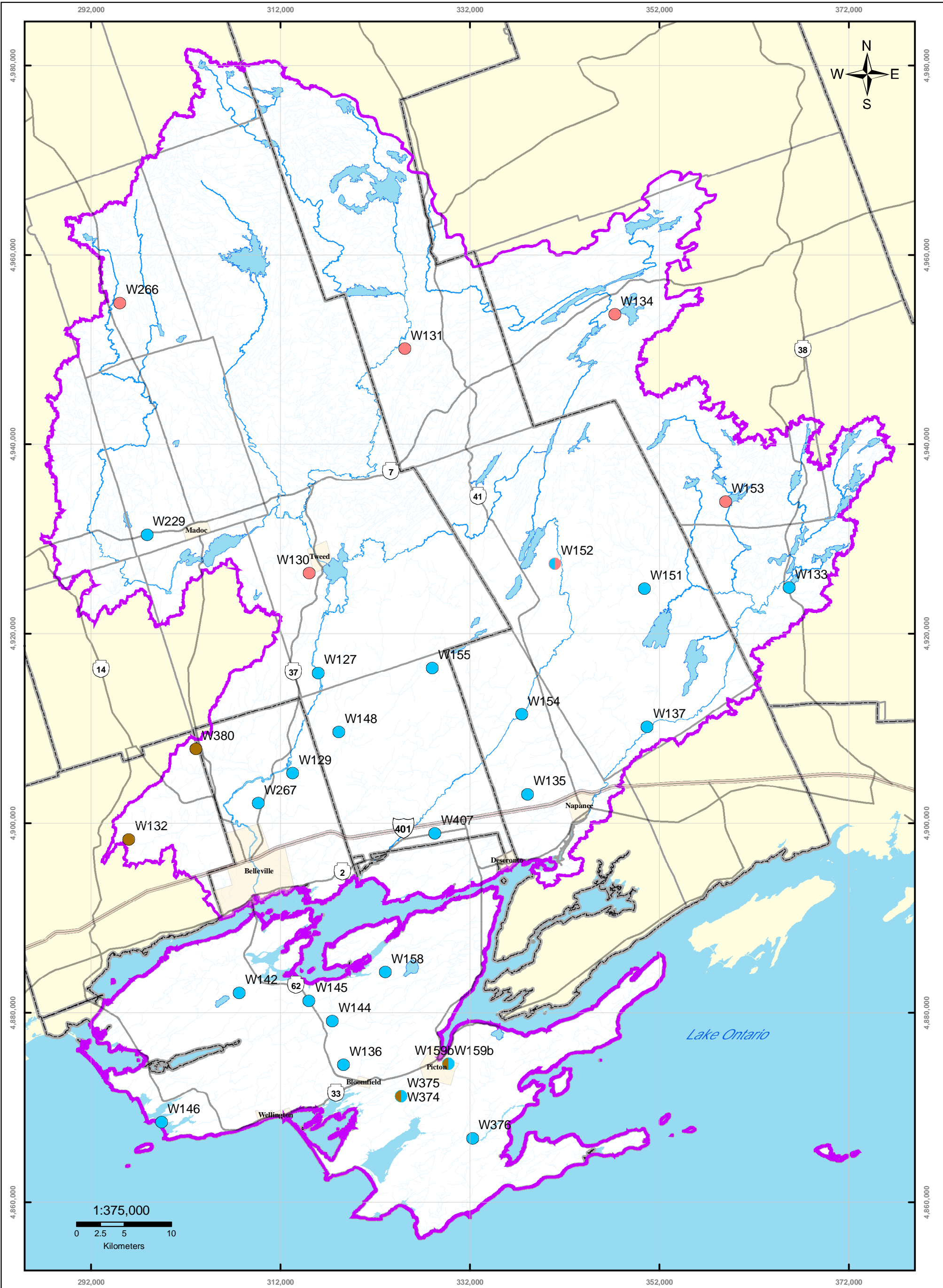
Trophic State



Moira River, Napanee Region and Prince Edward Region Watersheds.
 RR # 2, 2061 Old Highway # 2, Belleville, Ontario, K8N 4Z2.
 www.quinticonservation.ca, 613-968-3434

Produced by Quinte Conservation March 27, 2008 under license with the Ontario Ministry of Natural Resources. Copyright Quinte Conservation and the Queen's Printer for Ontario, 2008. Data is projected in NAD 83 UTM Zone 18N.

Digital Mapping Sources:
 Base Map - Ontario Ministry of Natural Resources
 Trophic Levels - MOE



QUINTE CONSERVATION

Moira River, Napanee Region and Prince Edward Region Watersheds.
 RR # 2, 2051 Old Highway # 2, Belleville, Ontario, K8N 4Z2.
 www.quinteconservation.ca, 613-968-3434

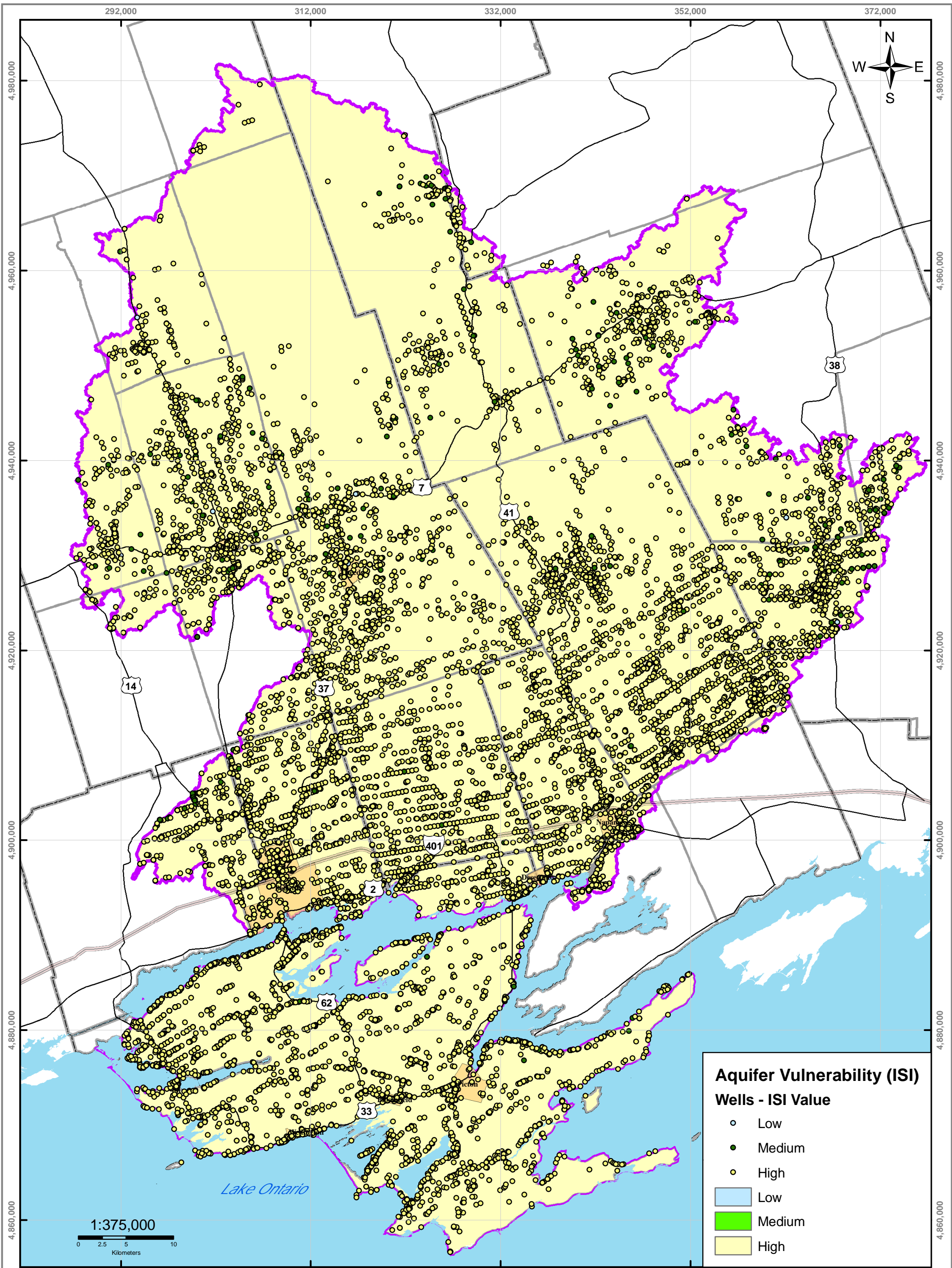
Produced by Quinte Conservation March 27, 2008 under license with the Ontario Ministry of Natural Resources. Copyright Quinte Conservation and the Queen's Printer for Ontario, 2008. Data is projected in NAD 83 UTM Zone 18N.

Digital Mapping Sources:
 Base Map - Ontario Ministry of Natural Resources
 PGMN Coordinates - Quinte Conservation

This map is for illustrative purposes only. QC makes no warranties and assumes no liability whatsoever regarding the truth, accuracy, content, or completeness of the map or the associated data.

- Legend**
- | | | | | |
|---------------------|-------------------------|---------------|-------------------|-----------------------|
| PGMN Wells | ● Overburden | — Highway 401 | ■ Lakes | ▭ County Boundaries |
| Aquifer Type | ● Limestone/Precambrian | — Highways | ■ Populated Areas | ▭ Township Boundaries |
| ● Precambrian | ● Overburden/Limestone | — Rivers | ■ QC Region | |
| ● Limestone | | | | |

Map 35 Provincial Groundwater Monitoring Network (PGMN) Wells



Aquifer Vulnerability (ISI)

Wells - ISI Value

- Low
- Medium
- High

Low
 Medium
 High

Legend

- Highway 401
- Populated Areas
- County Boundaries
- Highways
- Quinte Region
- Township Boundaries



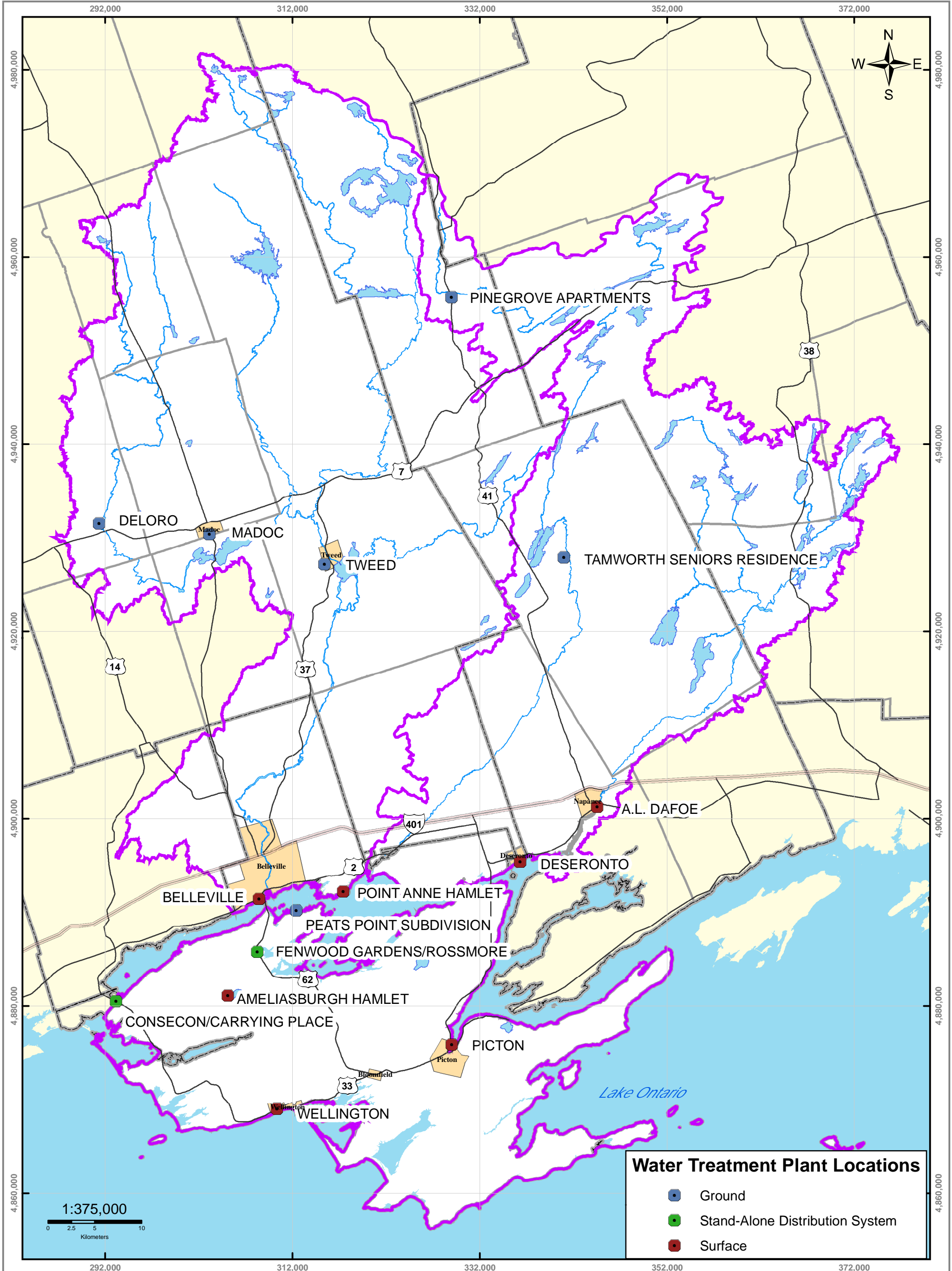
Mira River, Napanee Region and Prince Edward Region Watersheds.
 RR # 2, 2061 Old Highway # 2, Belleville, Ontario, K8N 4Z2.
 www.quinteconservation.ca, 613-988-3434

Produced by Quinte Conservation March 27, 2008 under license with the Ontario Ministry of Natural Resources. Copyright Quinte Conservation and the Queen's Printer for Ontario, 2008. Data is projected in NAD 83 UTM Zone 18N.

Digital Mapping Sources:
 Base Map - Ontario Ministry of Natural Resources
 Aquifer Vulnerability - Dillon Consulting 2004 Groundwater Study

This map is for illustrative purposes only. QC makes no warranties and assumes no liability whatsoever regarding the truth, accuracy, currency, or completeness of this map or the associated data.

Map 36 Vulnerable Aquifers



Water Treatment Plant Locations

- Ground
- Stand-Alone Distribution System
- Surface

Legend

- Highway 401
- Rivers
- Populated Areas
- County Boundaries
- Highways
- Lakes
- Quinte Region
- Township Boundaries

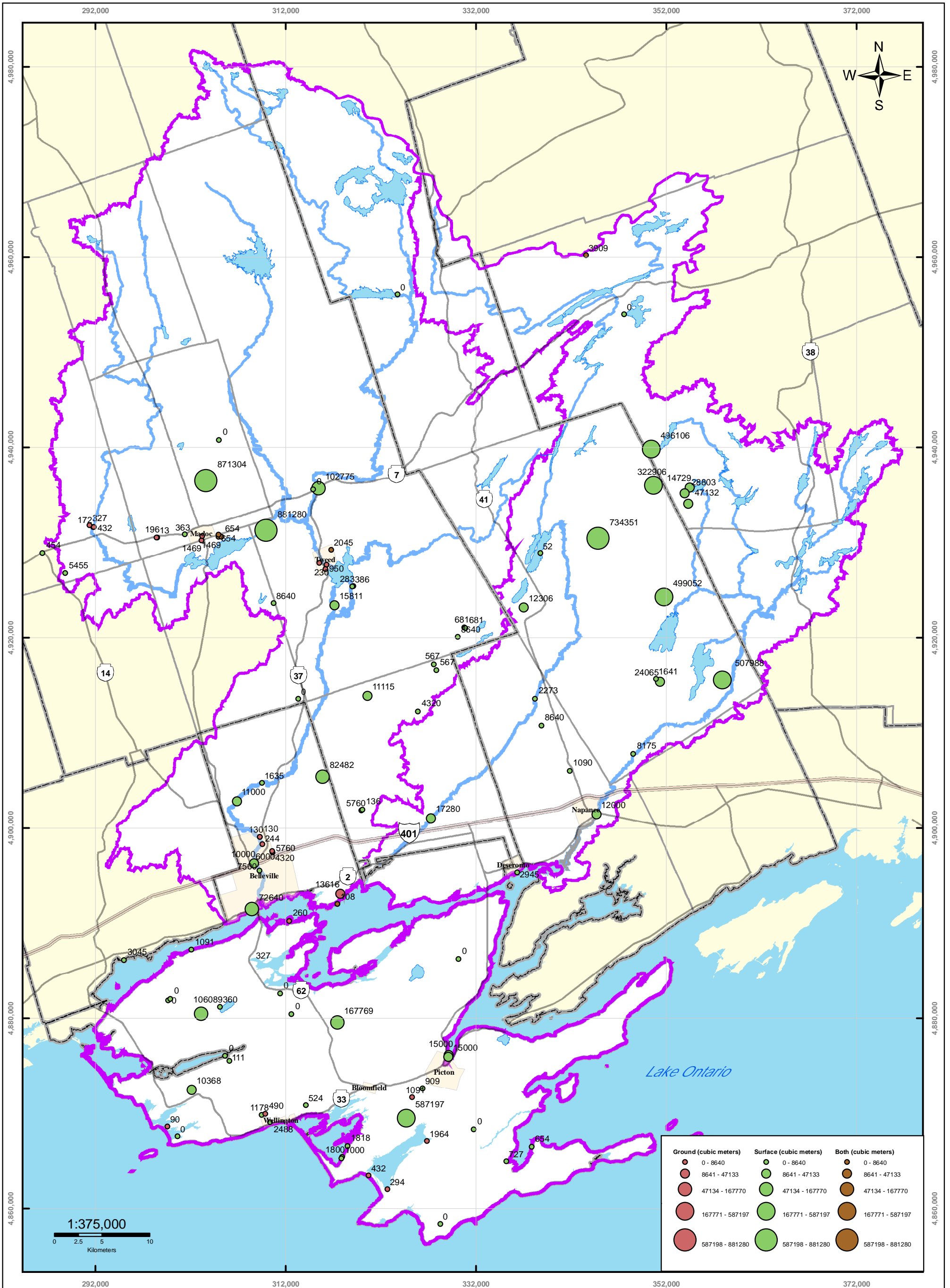


Moira River, Napanee Region and Prince Edward Region Watersheds.
 RR # 2, 2061 Old Highway # 2, Belleville, Ontario, K8N 4Z2.
 www.quinteconservation.ca, 613-968-3434

Produced by Quinte Conservation March 27 2008 under license with the Ontario Ministry of Natural Resources. Copyright Quinte Conservation and the Queen's Printer for Ontario, 2008. Data is projected in NAD 83 UTM Zone 18N.

Digital Mapping Sources:
 Base Map - Ministry of Natural Resources
 Water Treatment Plant Locations - MOE

Map 37 Drinking Water Information System Plant Location



Ground (cubic meters)	Surface (cubic meters)	Both (cubic meters)
0 - 8640	0 - 8640	0 - 8640
8641 - 47133	8641 - 47133	8641 - 47133
47134 - 167770	47134 - 167770	47134 - 167770
167771 - 587197	167771 - 587197	167771 - 587197
587198 - 881280	587198 - 881280	587198 - 881280

QUINTE CONSERVATION

Moira River, Napanee Region and Prince Edward Region Watersheds.
 RR # 2, 2061 Old Highway # 2, Belleville, Ontario, K8N 4Z2.
 www.quinteconservation.ca, 613-968-3434

Produced by Quinte Conservation March 27, 2008 under license with the Ontario Ministry of Natural Resources. Copyright Quinte Conservation and the Queen's Printer for Ontario, 2008. Data is projected in NAD 83 UTM Zone 18N.

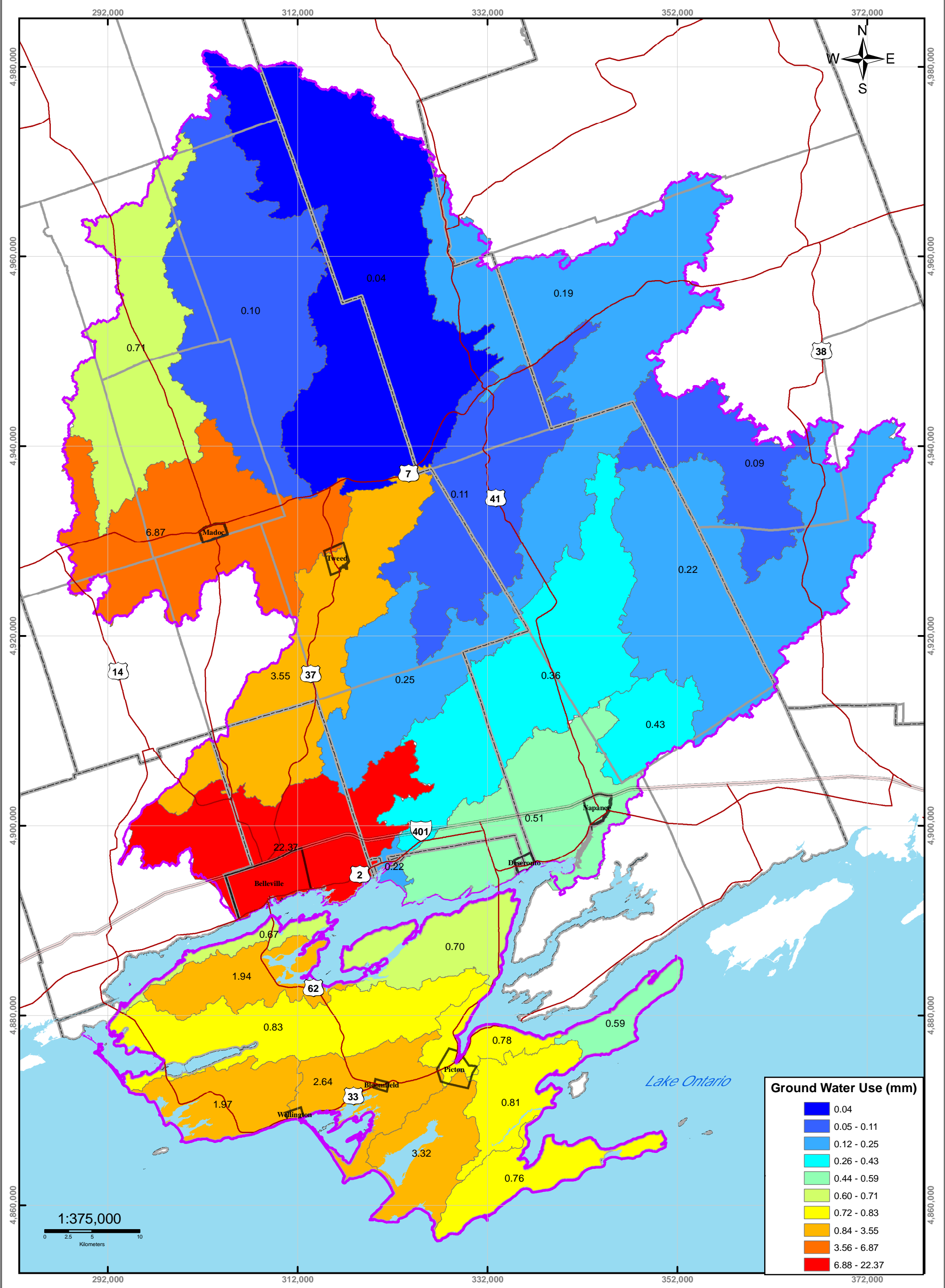
Digital Mapping Sources:
 Base Map - Ontario Ministry of Natural Resources
 Permits To Take Water - MOE

This map is for illustrative purposes only. QC makes no warranties and assumes no liability whatsoever regarding the truth, accuracy, currency, or completeness of this map or the associated data.

Legend

- Highway 401
- Highways
- Rivers
- Lakes
- QC Region
- Populated Areas
- County Boundaries
- Township Boundaries

Map 38 Water Takings



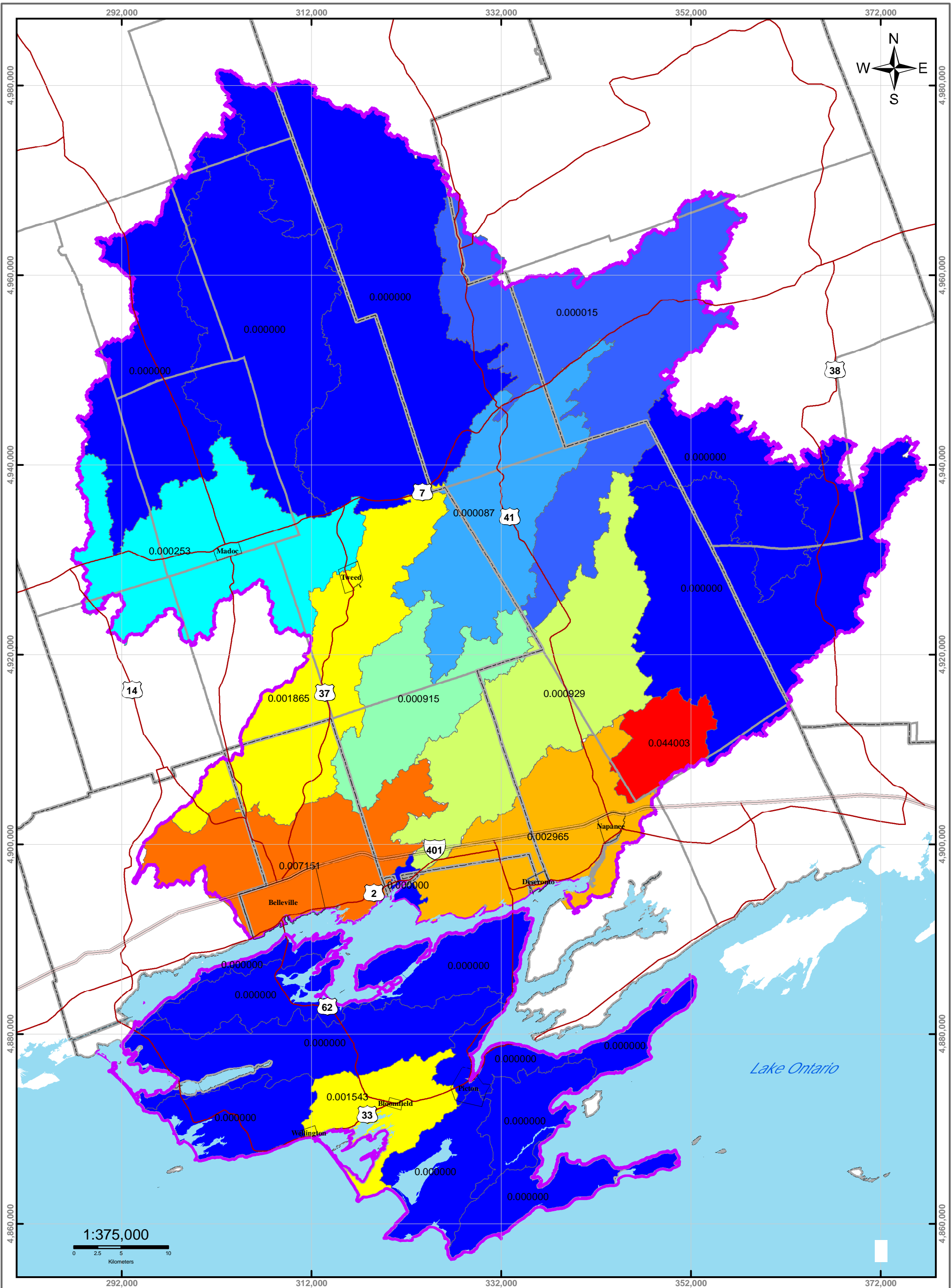
**QUINTE
CONSERVATION**

Moira River, Napanee Region and Prince Edward Region Watersheds.
 RR # 2, 2061 Old Highway # 2, Belleville, Ontario, K8N 4Z2.
 www.quinteconservation.ca, 613-968-3434
 Produced by Quinte Conservation March 27, 2008 under license with the
 Ontario Ministry of Natural Resources. Copyright Quinte Conservation and
 the Queen's Printer for Ontario, 2008. Data is projected in NAD 83
 UTM Zone 18N.
 Digital Mapping Sources:
 Base Map - Ontario Ministry of Natural Resources

Legend

- Highway 401
- Highways
- Quinte Region
- Populated Areas
- County Boundaries
- Township Boundaries

Map 39 Spatial Distribution of Annual Groundwater Usage



Moira River, Napanee Region and Prince Edward Region Watersheds.
 RR # 2, 2061 Old Highway # 2, Belleville, Ontario, K8N 4Z2.
www.quinteconservation.ca, 613-989-3434

Produced by Quinte Conservation March 27, 2008 under license with the Ontario Ministry of Natural Resources. Copyright Quinte Conservation and the Queen's Printer for Ontario, 2008. Data is projected in NAD 83 UTM Zone 18N.

Digital Mapping Sources:
 Base Map - Ontario Ministry of Natural Resources

This map is for illustrative purposes only. QC makes no warranties and assumes no liability whatsoever regarding the truth, accuracy, currency, or completeness of the map or the associated data.

Legend

- Highway 401
- Highways
- Populated Areas
- Quinte Region
- County Boundaries
- Township Boundaries

Map 40

Spatial Distribution of Annual Surface Water Usage*

Permits for non-consumptive takings from the Great Lakes (Lake Ontario & Bay of Quinte), wildlife conservation projects (i.e. Ducks Unlimited) and Quinte Conservation dams were excluded