

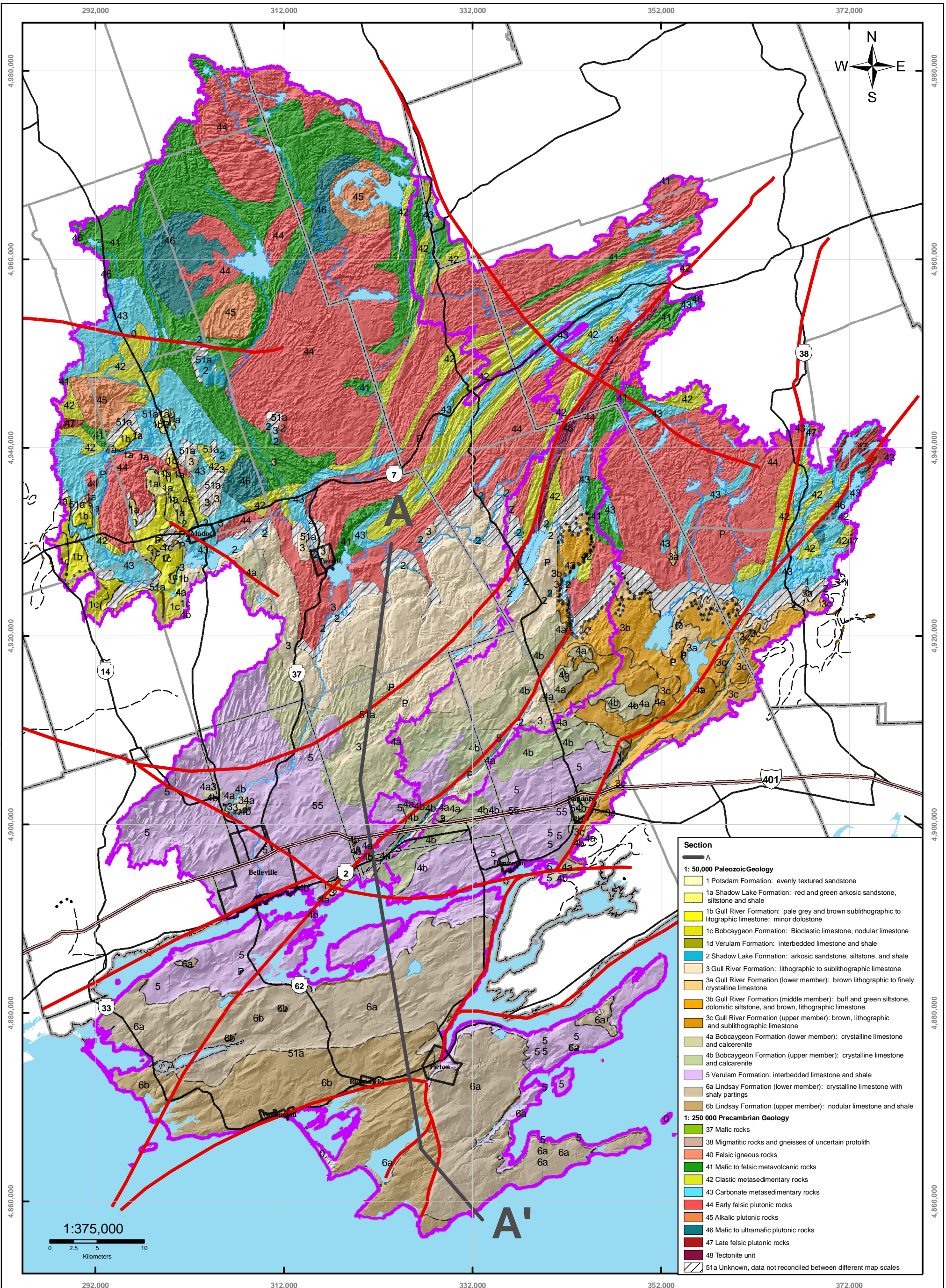
Legend

- Highway 401
- Lakes
- Precambrian Zone
- Highways
- Quinte Region
- Limestone Zone
- Rivers
- Populated Areas
- Prince Edward County Peninsula



Moira River, Napanee Region and Prince Edward Region Watersheds.
 RR # 2, 2061 Old Highway # 2, Belleville, Ontario, K8N 4Z2.
 www.quinteconservation.ca, 613-968-3434
 Produced by Quinte Conservation March 27, 2008 under license with the
 Ontario Ministry of Natural Resources. Copyright Quinte Conservation and
 the Queen's Printer for Ontario, 2008. Data is projected in NAD 83
 UTM Zone 18N.
 Digital Mapping Sources:
 Base Map - Ontario Ministry of Natural Resources
 Index Map - ESRI Canada
 This map is for illustrative purposes only. QC makes no warranties and assumes no liability
 whatsoever regarding the truth, accuracy, currency, or completeness of the data.

Map 1 Quinte Conservation Watersheds



Section	
A	
1: 50,000 Paleozoic Geology	
1	Potsdam Formation: evenly textured sandstone
1a	Shadow Lake Formation: red and green arkosic sandstone, siltstone and shale
1b	Gull River Formation: pale grey and brown sublithographic to lithographic limestone: minor dolostone
1c	Bobcaygeon Formation: Bioclastic limestone, nodular limestone
1d	Verulam Formation: interbedded limestone and shale
2	Shadow Lake Formation: arkosic sandstone, siltstone, and shale
3	Gull River Formation: lithographic to sublithographic limestone
3a	Gull River Formation (lower member): brown lithographic to finely crystalline limestone
3b	Gull River Formation (middle member): buff and green siltstone, dolomitic siltstone, and brown, lithographic limestone
3c	Gull River Formation (upper member): brown, lithographic and sublithographic limestone
4a	Bobcaygeon Formation (lower member): crystalline limestone and calcarenite
4b	Bobcaygeon Formation (upper member): crystalline limestone and calcarenite
5	Verulam Formation: interbedded limestone and shale
6a	Lindsay Formation (lower member): crystalline limestone with shaly partings
6b	Lindsay Formation (upper member): nodular limestone and shale
1: 250,000 Precambrian Geology	
37	Mafic rocks
38	Migmatitic rocks and gneisses of uncertain protolith
40	Felsic igneous rocks
41	Mafic to felsic metavolcanic rocks
42	Clastic metasedimentary rocks
43	Carbonate metasedimentary rocks
44	Early felsic plutonic rocks
45	Alkalic plutonic rocks
46	Mafic to ultramafic plutonic rocks
47	Late felsic plutonic rocks
48	Tectonite unit
51a	Unknown, data not reconciled between different map scales

Legend

- Approximate Faults
- Interpreted Faults
- Highway 401
- Highways
- Geological Boundary - position approximate
- Geological Boundary - position interpreted
- Rivers
- Lakes
- Geological Boundary - observed
- Populated Areas
- QC Region
- County Boundaries
- Township Boundaries

Map 2 Bedrock Geology

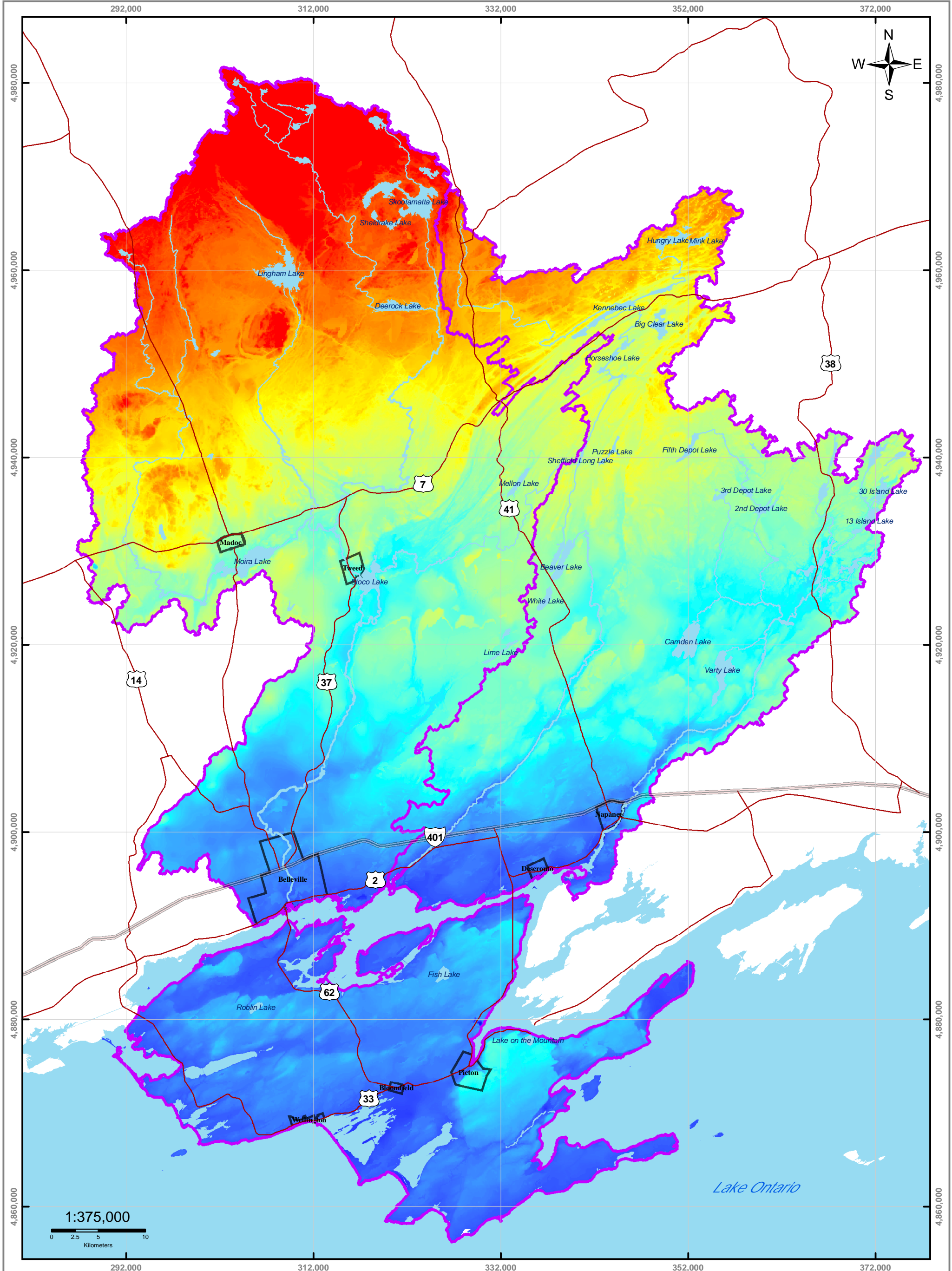


Moira River, Napanee Region and Prince Edward Region Watersheds.
 RR # 2, 2061 Old Highway # 2, Belleville, Ontario, K8N 4Z2.
 www.quinteconservation.ca, 613-868-3434

Produced by Quinte Conservation March 27, 2008 under license with the Ontario Ministry of Natural Resources. Copyright Quinte Conservation and the Queen's Printer for Ontario, 2008. Data is projected in NAD 83 UTM Zone 18N.

Digital Mapping Sources:
 Base Map - Ministry of Natural Resources
 Bedrock Geology - Ministry of Natural Resources

This map is for illustrative purposes only. QC makes no warranties and assumes no liability whatsoever regarding the truth, accuracy, currency, or completeness of this map or the associated data.



QUINTE CONSERVATION

Moira River, Napanee Region and Prince Edward Region Watersheds.
 RR # 2, 2061 Old Highway # 2, Belleville, Ontario, K8N 4Z2.
 www.quinteconservation.ca, 613-968-3434

Produced by Quinte Conservation March 27, 2008 under license with the Ontario Ministry of Natural Resources. Copyright Quinte Conservation and the Queen's Printer for Ontario, 2008. Data is projected in NAD 83 UTM Zone 18N.

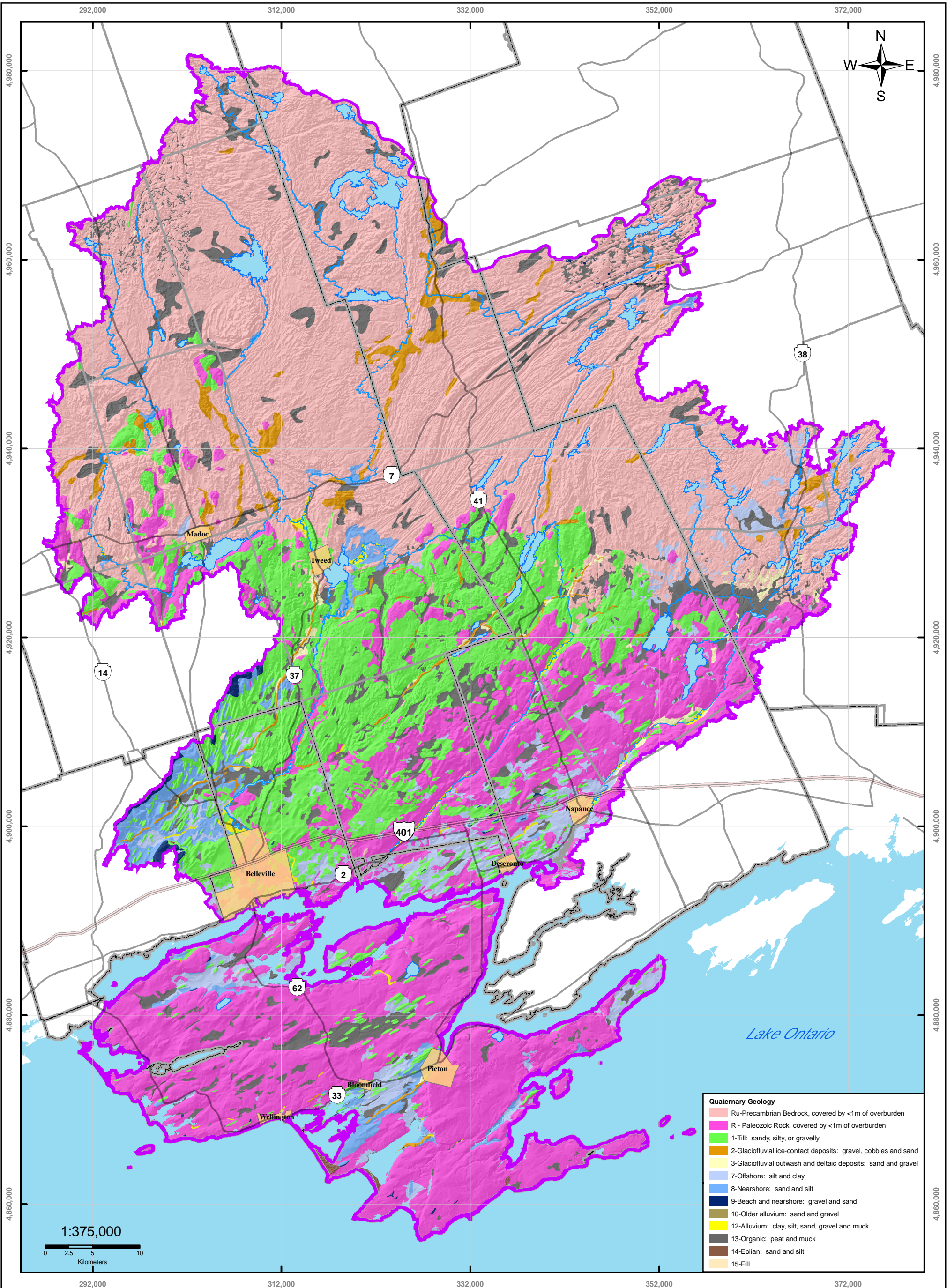
Digital Mapping Sources:
 Base Map - Ontario Ministry of Natural Resources
 Bedrock Topography - Dillon Consulting

This map is for illustrative purposes only. QC makes no warranties and assumes no liability whatsoever regarding the truth, accuracy, currency, or completeness of the data.

Legend

Highway 401	Lakes	Bedrock Topography (masl) High : 454 Low : 50
Highways	Populated Areas	
Rivers	Quinte Region	

Map 3 Bedrock Topography

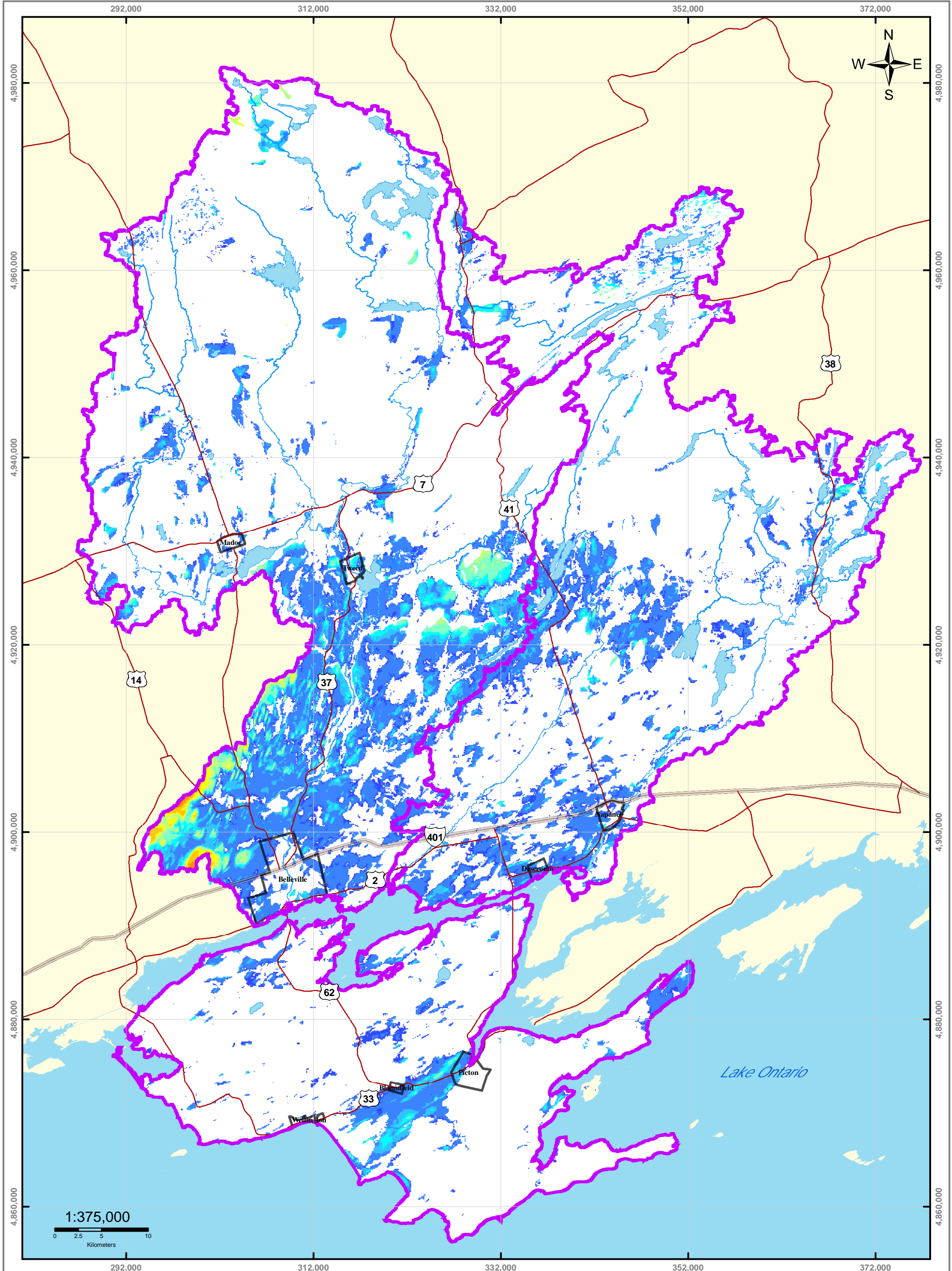


Moira River, Napanee Region and Prince Edward Region Watersheds.
 RR # 2, 2061 Old Highway # 2, Belleville, Ontario, K8N 4Z2.
 www.quinteconservation.ca, 613-968-3434

Produced by Quinte Conservation March 27, 2008 under license with the
 Ontario Ministry of Natural Resources. Copyright Quinte Conservation and
 the Queen's Printer for Ontario, 2008. Data is projected in NAD 83
 UTM Zone 18N.

Digital Mapping Sources:
 Base Map - Ministry of Natural Resources
 Surficial Geology - Ministry of Natural Resources

Map 4 Surficial Geology



QUINTE CONSERVATION

Moira River, Napanee Region and Prince Edward Region Watersheds.
 RR #2, 2051 Old Highway #2, Belleville, Ontario, K8N 4Z2.
 www.quintecconservation.ca, 613-968-3434

Produced by Quinte Conservation March 27 2008 under license with the Ontario Ministry of Natural Resources. Copyright Quinte Conservation and the Queen's Printer for Ontario, 2008. Data is projected in NAD 83 UTM Zone 18N.

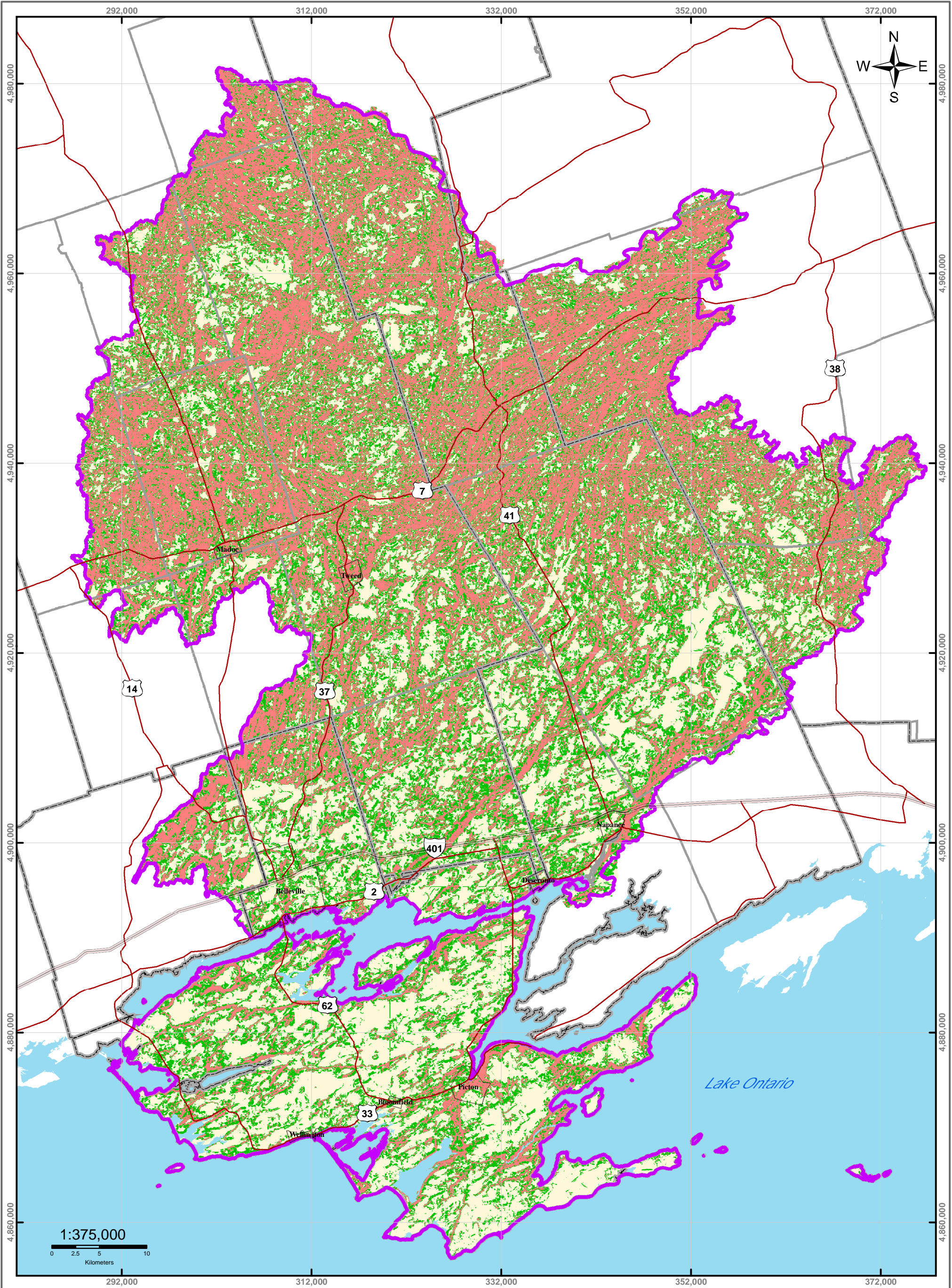
Digital Mapping Sources:
 Base Map - Ontario Ministry of Natural Resources
 Overburden Thickness - Dillon Consulting for OC

This map is for illustrative purposes only. OC makes no warranties and assumes no liability whatsoever regarding the truth, accuracy, currency, or completeness of the map or its associated data.

Legend

Highway 401	Lakes	<1.5	10 - 15	40 - 50	80 - 100
Highways	Populated Areas	1.5 - 3	15 - 20	50 - 60	> 100
Rivers	Quinte Region	3 - 10	20 - 30	60 - 70	
			30 - 40	70 - 80	

Map 5 Overburden Thickness



QUINTE CONSERVATION

Moira River, Napanee Region and Prince Edward Region Watersheds.
 RR # 2, 2061 Old Highway # 2, Belleville, Ontario, K8N 4Z2.
 www.quinteconservation.ca, 613-968-3434

Produced by Quinte Conservation March 27 2008 under license with the Ontario Ministry of Natural Resources. Copyright Quinte Conservation and the Queen's Printer for Ontario, 2008. Data is projected in NAD 83 UTM Zone 18N.

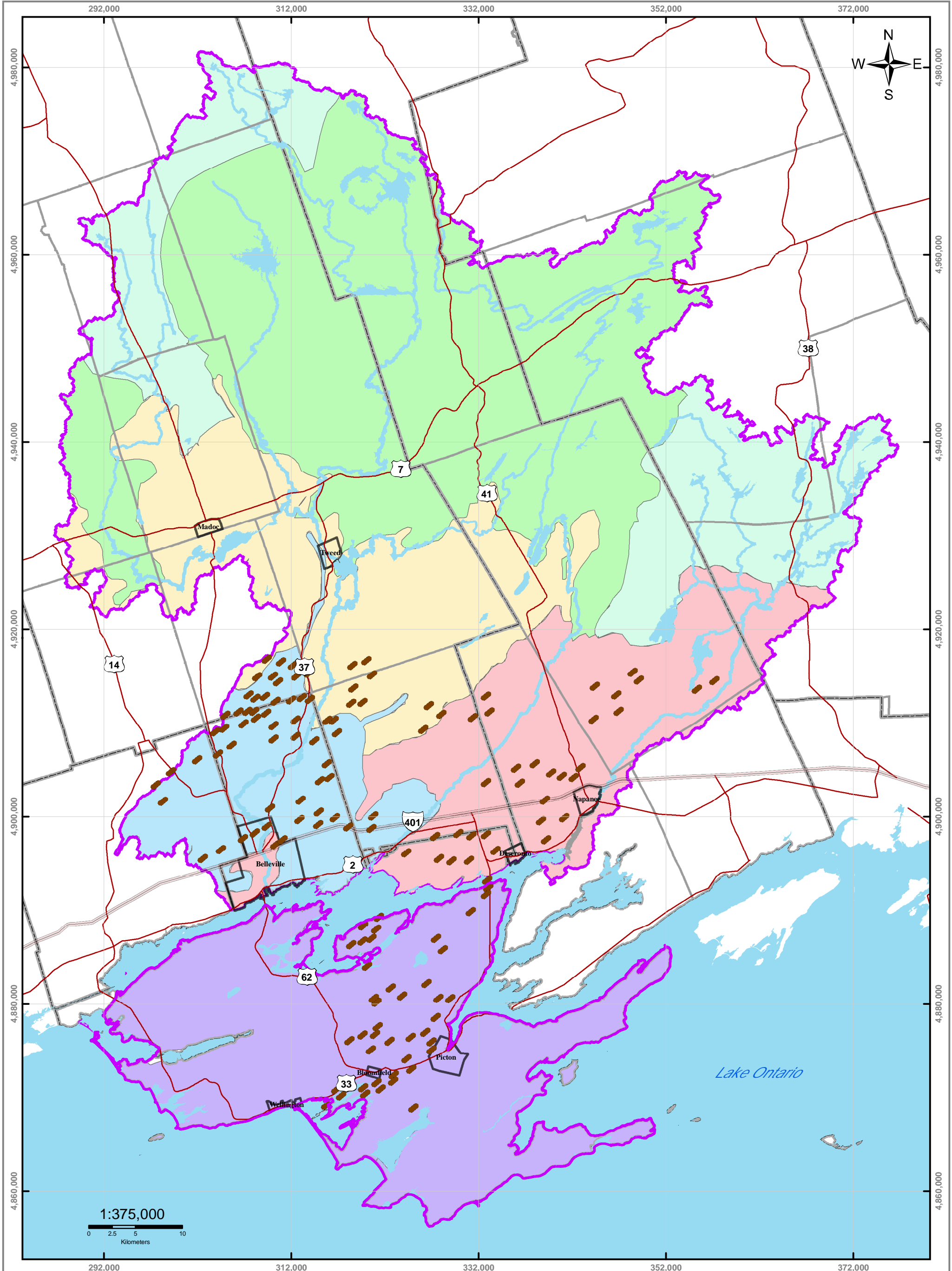
Digital Mapping Sources:
 Base Map - Ministry of Natural Resources

This map is for illustrative purposes only. QC makes no warranties and assumes no liability whatsoever regarding the truth, accuracy, currency, and completeness of this map and its associated data.

Legend

Highway 401	Quinte Region	Slope Type
Highways	County Boundaries	Flat Land
Populated Areas	Township Boundaries	Rolling Land
		Hilly Land

Map 6 Land Slope Classes



QUINTE CONSERVATION

Moira River, Napanee Region and Prince Edward Region Watersheds.
 RR # 2, 2061 Old Highway # 2, Belleville, Ontario, K8N 4Z2.
 www.quintecconservation.ca, 613-968-3434

Produced by Quinte Conservation March 27 2008 under license with the Ontario Ministry of Natural Resources. Copyright Quinte Conservation and the Queen's Printer for Ontario, 2008. Data is projected in NAD 83 UTM Zone 18N.

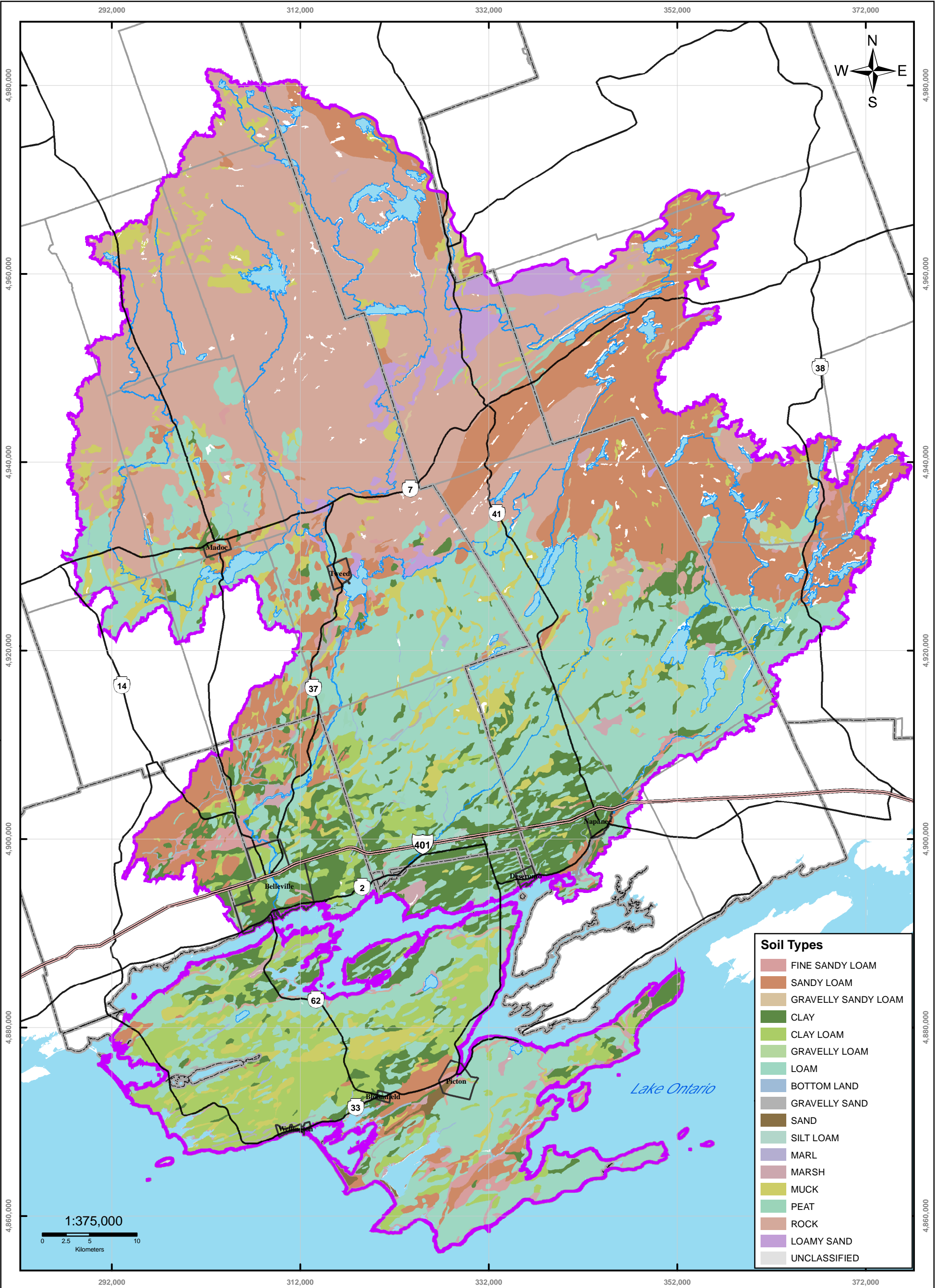
Digital Mapping Sources:
 Base Map - Ontario Ministry of Natural Resources
 Physiographic Regions - Chapman & Putman 1984 & Dillon Consulting

This map is for illustrative purposes only. QC makes no warranties and assumes no liability whatsoever regarding the truth, accuracy, currency, or completeness of the map or its associated data.

Legend

Drumlins	Rivers	Physiographic Regions	Napanee Plain
Highways	Lakes	Algonquin Highlands	Peterborough Drumlin Field
Highway 401	Populated Areas	Dummer Moraines	Prince Edward Peninsula
	Quinte Region	Georgian Bay Fringe	

Map 7 Physiographic Regions



Soil Types

[Light Brown]	FINE SANDY LOAM
[Orange]	SANDY LOAM
[Light Orange]	GRAVELLY SANDY LOAM
[Dark Green]	CLAY
[Light Green]	CLAY LOAM
[Medium Green]	GRAVELLY LOAM
[Light Green]	LOAM
[Blue-Gray]	BOTTOM LAND
[Dark Gray]	GRAVELLY SAND
[Brown]	SAND
[Light Blue-Gray]	SILT LOAM
[Purple]	MARL
[Pinkish-Brown]	MARSH
[Yellow-Green]	MUCK
[Light Green]	PEAT
[Light Brown]	ROCK
[Purple]	LOAMY SAND
[Light Gray]	UNCLASSIFIED

QUINTE CONSERVATION

Moira River, Napanee Region and Prince Edward Region Watersheds.
 RR # 2, 2061 Old Highway # 2, Belleville, Ontario, K8N 4Z2.
 www.quinteconservation.ca, 613-968-3434

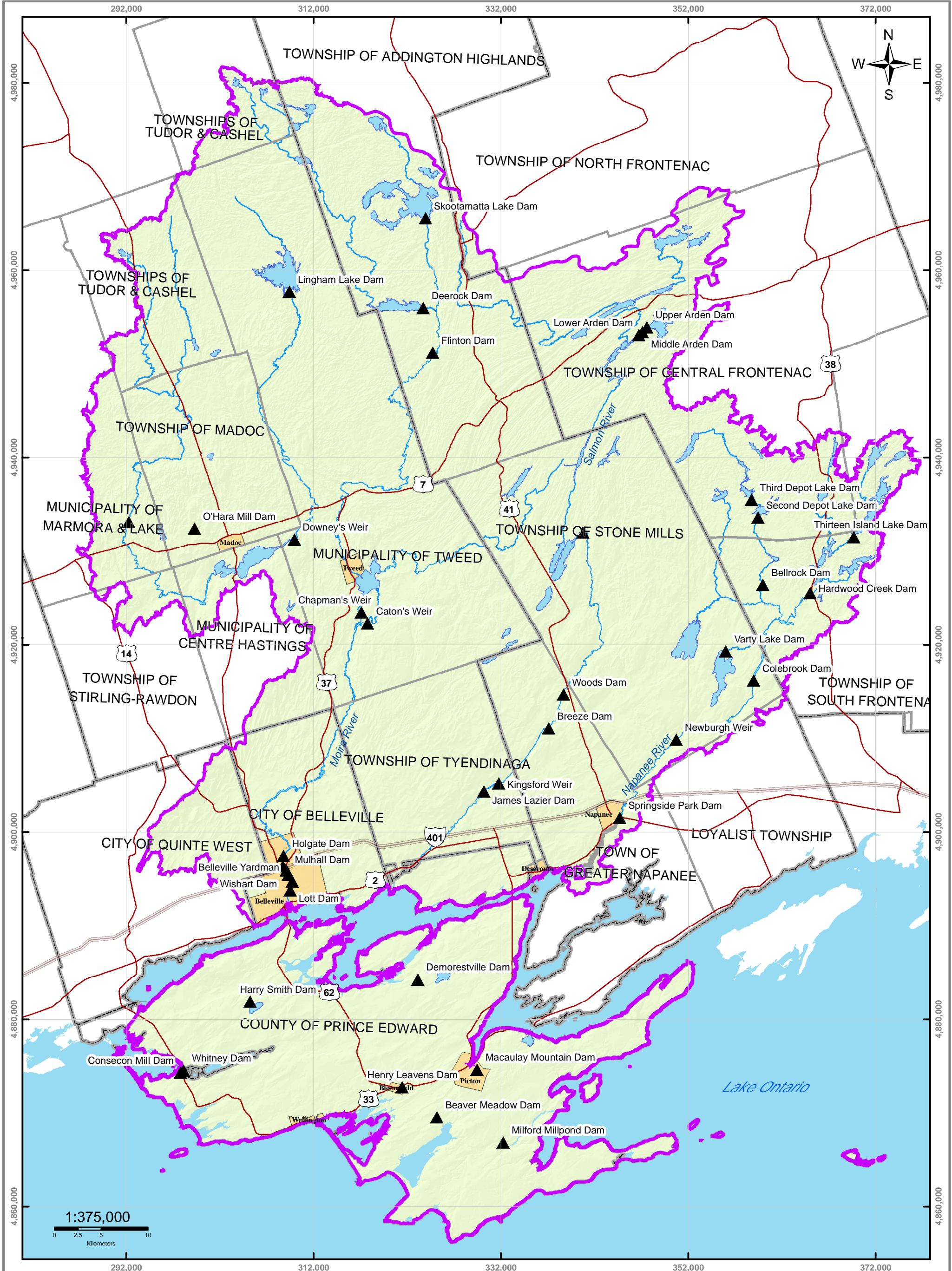
Produced by Quinte Conservation March 27 2008 under license with the Ontario Ministry of Natural Resources. Copyright Quinte Conservation and the Queen's Printer for Ontario, 2008. Data is projected in NAD 83 UTM Zone 18N.

Digital Mapping Sources:
 Base Map - Ministry of Natural Resources
 Soil Data - Ministry of Natural Resources

Legend

- Highway 401
- Rivers
- Populated Areas
- County Boundaries
- Highways
- Lakes
- QC Region
- Township Boundaries

Map 8 Soil Types



QUINTE CONSERVATION

Moira River, Napanee Region and Prince Edward Region Watersheds.
 RR # 2, 2061 Old Highway # 2, Belleville, Ontario, K8N 4Z2.
 www.quinteconservation.ca, 613-968-3434

Produced by Quinte Conservation March 27 2008 under license with the Ontario Ministry of Natural Resources. Copyright Quinte Conservation and the Queen's Printer for Ontario, 2008. Data is projected in NAD 83 UTM Zone 18N.

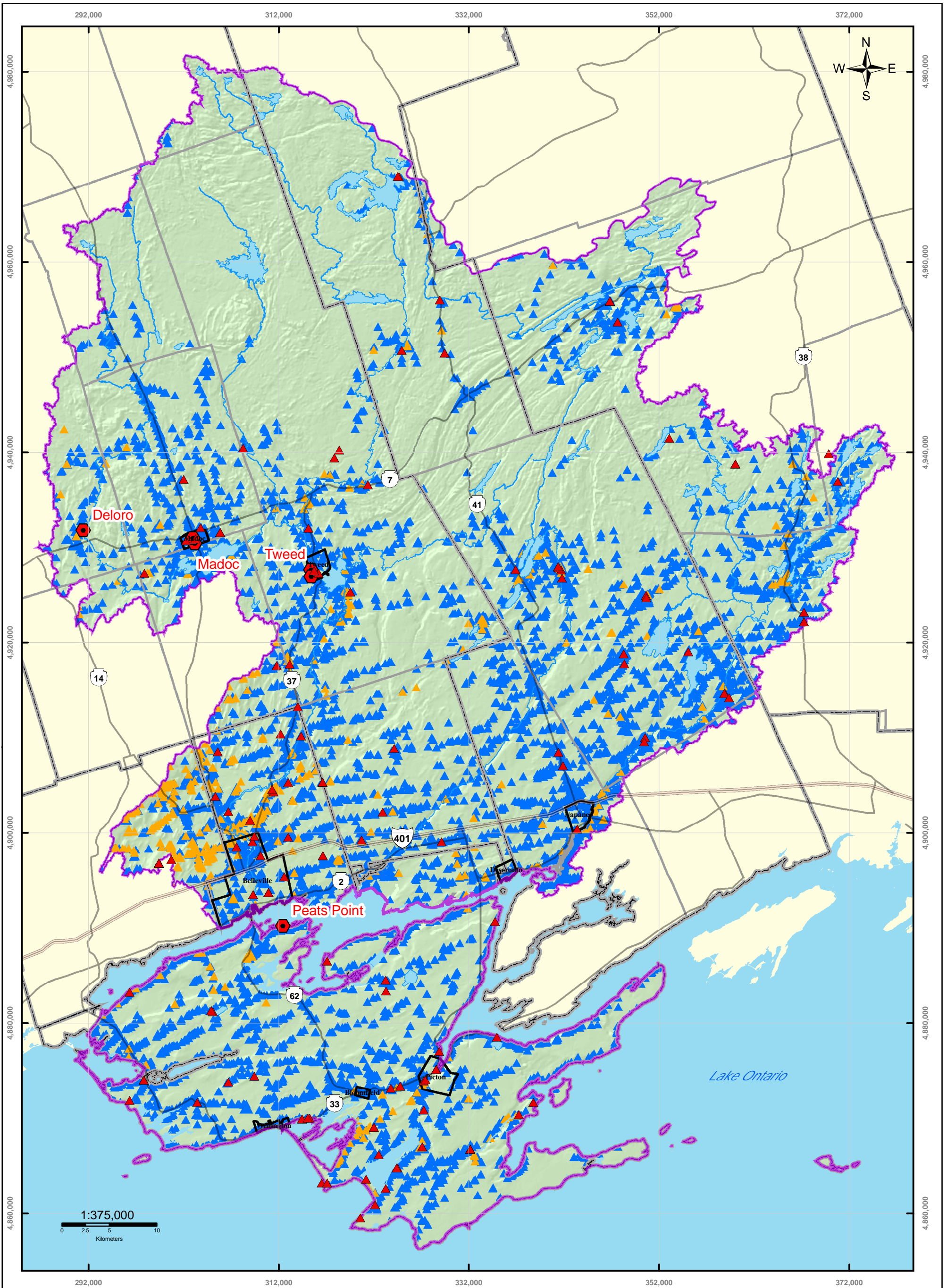
Digital Mapping Sources:
 Base Map - Ontario Ministry of Natural Resources

This map is for illustrative purposes only. QC makes no warranties and assumes no liability whatsoever regarding the truth, accuracy, currency, or completeness of the map or its associated data.

Legend

▲ QC Dams	— Rivers	▭ County Boundaries
— Highway 401	— Lakes	▭ Township Boundaries
— Highways	■ Populated Areas	▭ Quinte Region

Map 9 Quinte Conservation Dams



QUINTE CONSERVATION

Mora River, Napanee Region and Prince Edward Region Watersheds.
 RR # 2, 2061 Old Highway # 2, Belleville, Ontario, K8N 4Z2.
 www.quinteconservation.ca, 613-968-3434

Produced by Quinte Conservation March 27 2008 under license with the Ontario Ministry of Natural Resources. Copyright Quinte Conservation and the Queen's Printer for Ontario, 2008. Data is projected in NAD 83 UTM Zone 18N.

Digital Mapping Sources:
 Base Map - Ministry of Natural Resources
 Water Well Data - Dillon Ground Water Study & Ministry of Environment

This map is for illustrative purposes only. QC makes no warranty and assumes no liability whatsoever regarding the truth, accuracy, currency, or completeness of this map or the associated data.

Legend

- Municipal Wells
- Communal well water supply
- Bedrock Wells
- Overburden Wells
- Highway 401
- Highways
- Rivers
- Lakes
- Populated Areas
- County Boundaries
- Township Boundaries
- QC Region

Map 10 Water Well Distribution*

*Only water wells with reliable UTM coordinates displayed on the map