

Moira River, Napanee Region
and Prince Edward Region Watersheds.
RR # 2, 2351 Old Highway # 2,
Belleville, Ontario, K8N 4Z2.
www.quinteconservation.ca, 613-968-3434

Legend

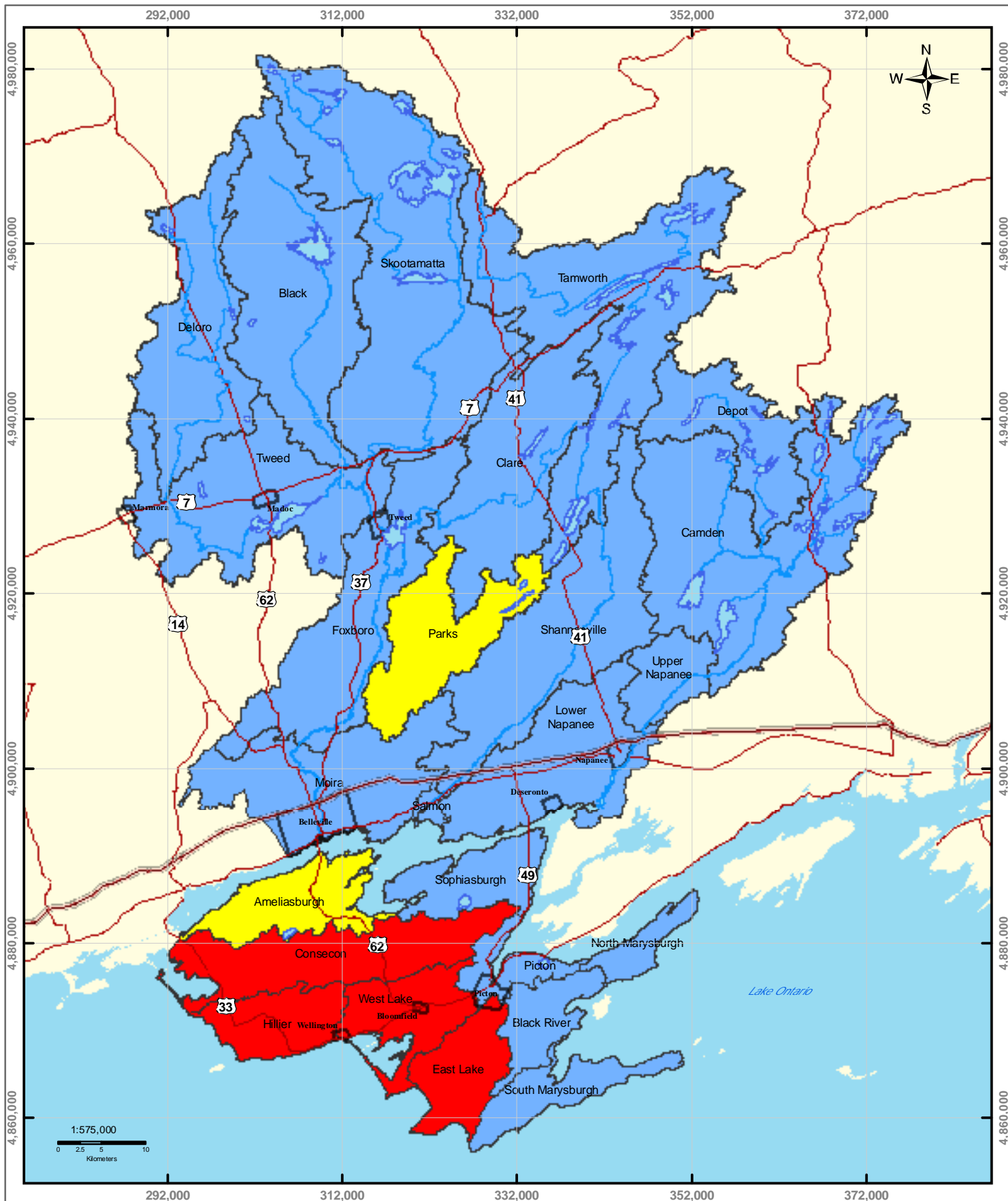
- Highway 401
- Rivers
- Populated Areas
- Moira
- Highways
- Lakes
- Township Boundaries
- Napanee
- County Boundaries
- Prince Edward

DISCLAIMER:
The information conveyed by this map is regional in nature and is not suitable for use in site specific evaluations.

Produced by Quinte Conservation under license with the Ontario Ministry of Natural Resources. Copyright Quinte Conservation and the Queen's Printer for Ontario, 2008. Data is projected in NAD 83 UTM Zone 18N.

DIGITAL MAPPING SOURCES:
Base Map - Ontario Ministry of Natural Resources
Surface Water Intakes - Ontario Ministry of the Environment
Municipal Wells - Dissen Consulting

Map 1.1 Quinte Source Protection Region



Legend

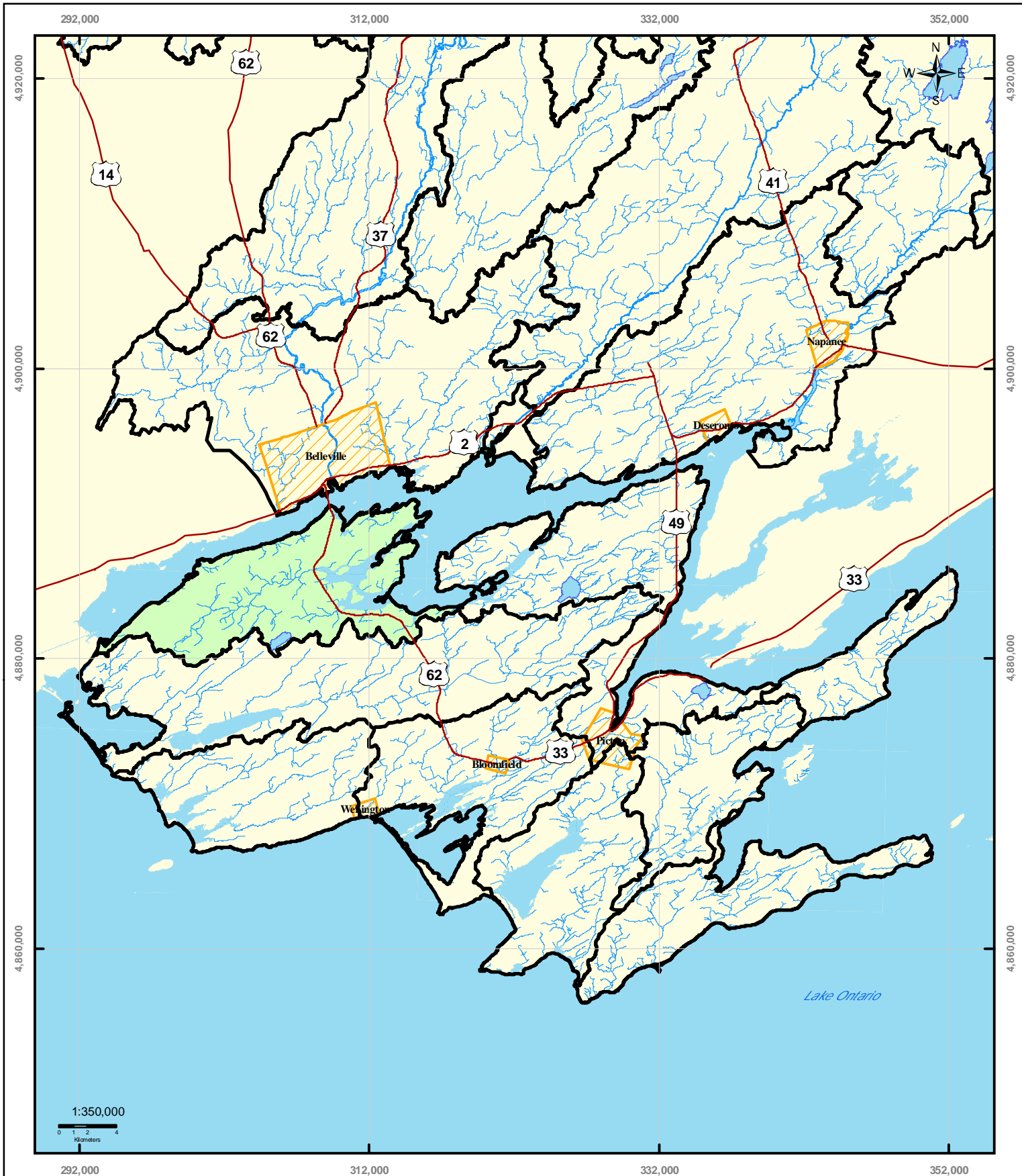
- Highway 401
- Rivers
- Highways
- Lakes
- Percent Water Demand
- < 20
- 20 - 50
- > 50

DISCLAIMER
The information conveyed by this map is regional in nature and is not suitable for use in site specific evaluations.

Produced by Quinte Conservation under license with the Ontario Ministry of Natural Resources. Copyright Quinte Conservation and the Queen's Printer for Ontario, 2008. Data is projected in NAD83 UTM Zone 18N.

DIGITAL MAPPING SOURCES:
Base Map - Ontario Ministry of Natural Resources Subcatchments - Derived using ArcHydro

Map 1.2 Tier 1 Subwatershed Percent Water Demand



Maita River, Napanee Region
and Prince Edward Region Watersheds.
RR # 2, 23051 Old Highway # 2,
Belleville, Ontario, K8N 4Z2.
www.quinteconservation.ca, 613-968-3434

Legend

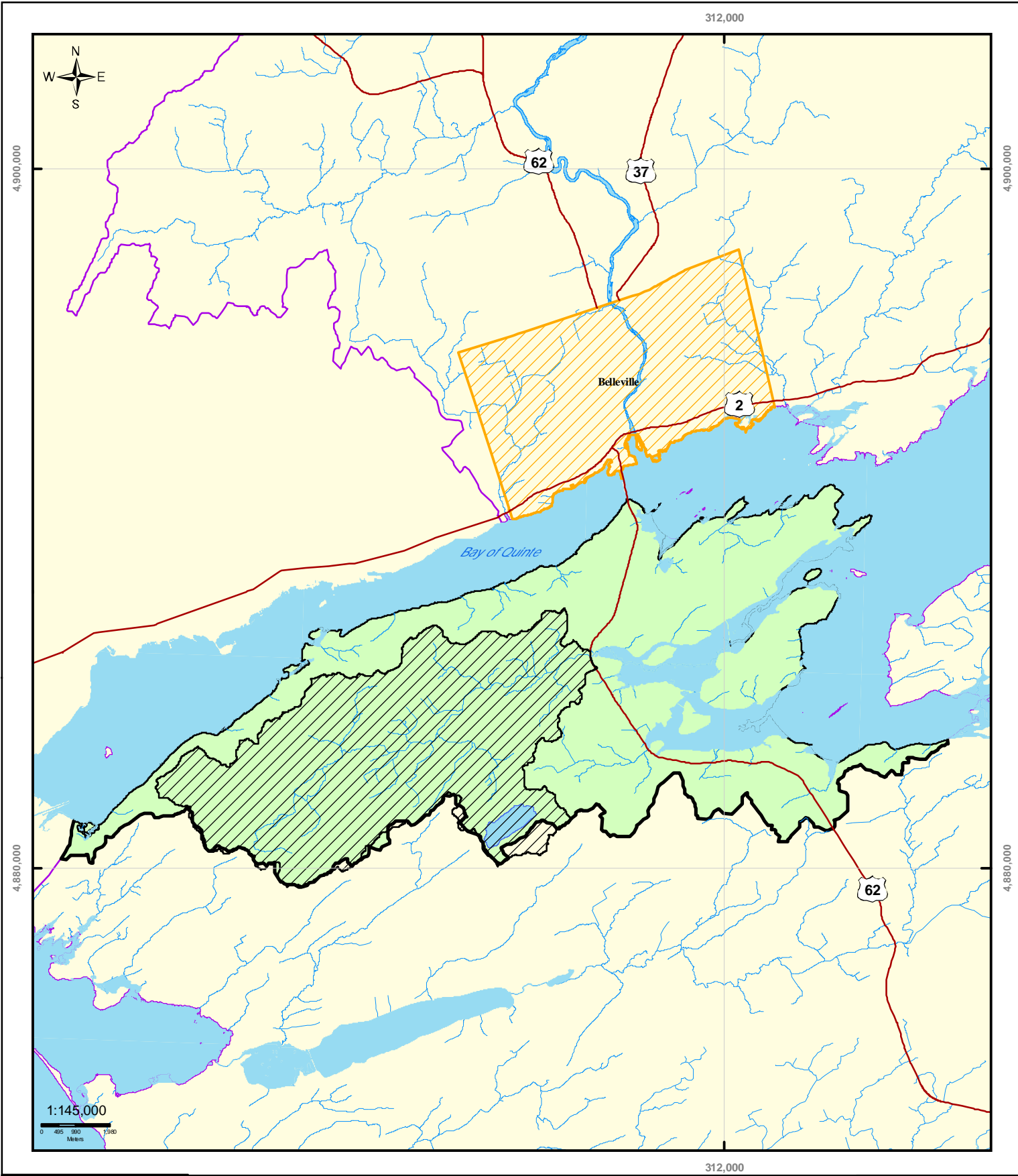
- Highways
- ▨ Populated Areas
- Ameliasburgh Catchment
- Lakes
- Surrounding Catchments

Map 2.1 Ameliasburgh Subcatchment

DISCLAIMER:
The information conveyed by this map is regional in nature and is not suitable for use in site specific evaluations.

Produced by Quinte Conservation under license with the Ontario Ministry of Natural Resources. Copyright Quinte Conservation and the Queen's Printer for Ontario, 2008. Data is projected in NAD 83 UTM Zone 18N.

DIGITAL MAPPING SOURCES:
Digital Mapping Sources:
Base Map - Ontario Ministry of Natural Resources
Surface Water Intakes - Ontario Ministry of the Environment
Municipal Wells - Diten Consulting



Maita River, Napanee Region
and Prince Edward Region Watersheds.
RR # 2, 23051 Old Highway # 2,
Belleville, Ontario, K8N 4Z2.
www.quinteconservation.ca, 613-968-3434

Legend

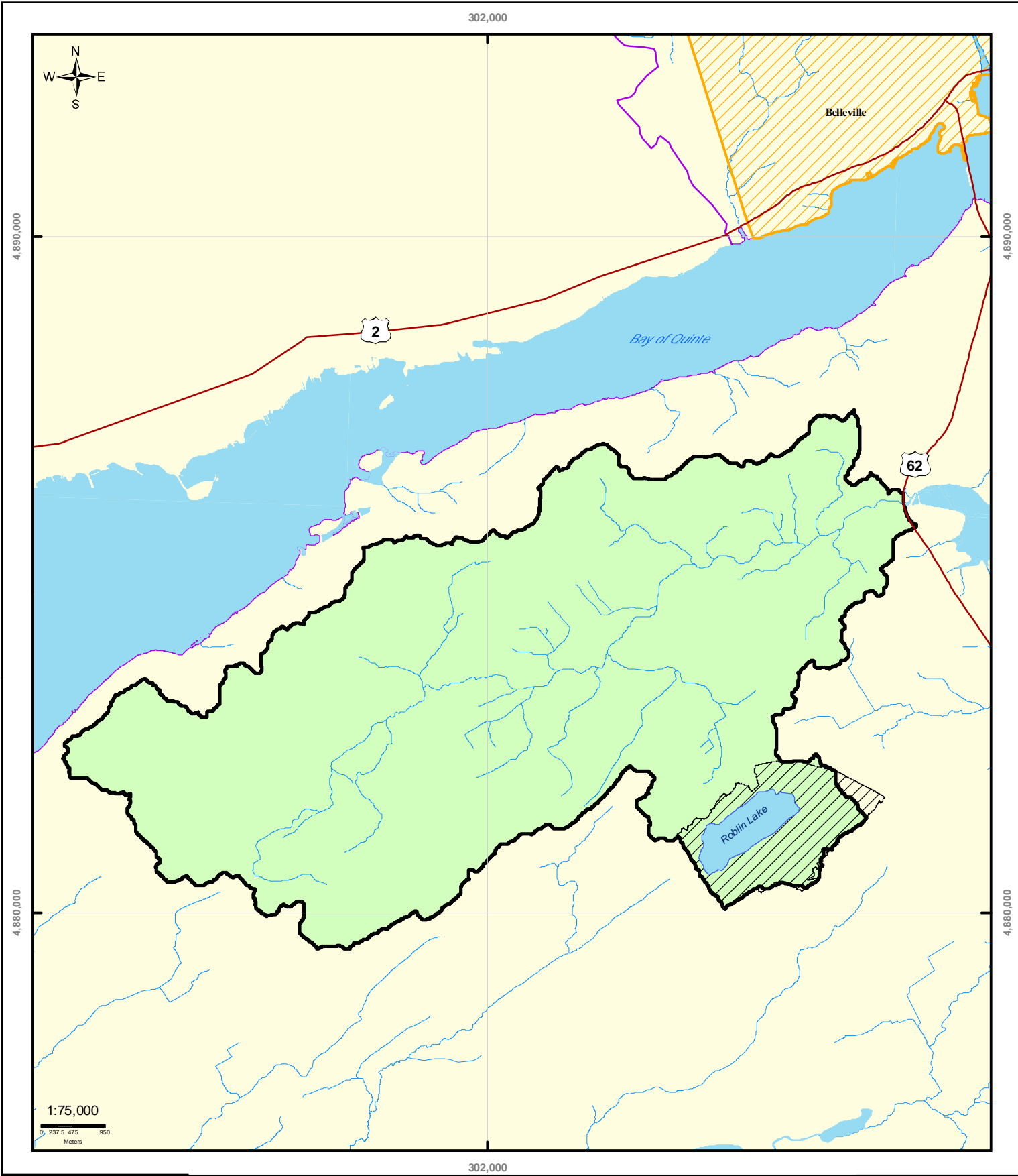
- Highways
- ▨ Populated Areas
- ▨ Ameliasburgh Catchment
- ▨ Waterbody
- ▨ Sawguin Creek Drainage Area

Map 2.2 Ameliasburgh Subcatchment & Sawguin Creek Drainage Area

DISCLAIMER:
The information conveyed by this map is regional in nature and is not suitable for use in site specific evaluations.

Produced by Quinte Conservation under license with the Ontario Ministry of Natural Resources. Copyright Quinte Conservation and the Queen's Printer for Ontario, 2008. Data is projected in NAD 83 UTM Zone 18N.

DIGITAL MAPPING SOURCES:
Base Map - Ontario Ministry of Natural Resources
Surface Water Features - Ontario Ministry of the Environment
Municipal Wells - Dusen Consulting



Maita River, Napanee Region
and Prince Edward Region Watersheds.
RR # 2, 2351 Old Highway # 2,
Belleville, Ontario, K8N 4Z2.
www.quinteconservation.ca, 613-968-3434

Legend

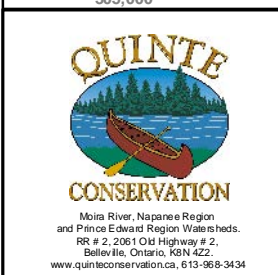
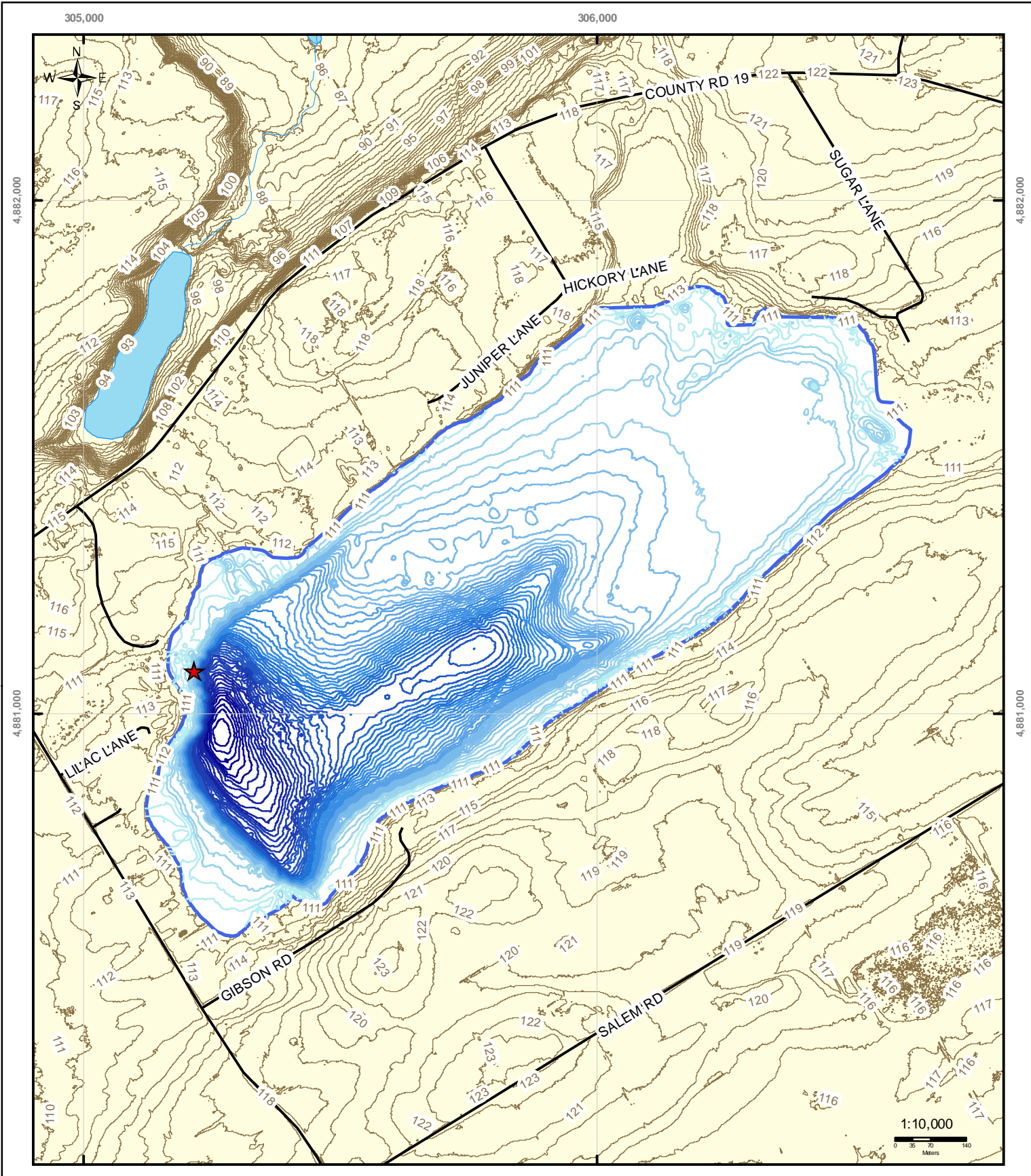
- Highways ▨ Populated Areas ▩ Roblin Lake Watershed
- Creeks ■ Waterbody ■ Sawguin Creek Drainage Area

Map 2.3 Roblin Lake Watershed & Sawguin Creek Drainage Area

DISCLAIMER:
The information conveyed by this map is regional in nature and is not suitable for use in site specific evaluations.

Produced by Quinte Conservation under license with the Ontario Ministry of Natural Resources. Copyright Quinte Conservation and the Queen's Printer for Ontario, 2008.
Data is projected in NAD 83 UTM Zone 18N.

DIGITAL MAPPING SOURCES:
Base Map - Ontario Ministry of Natural Resources
Surface Water Intakes - Ontario Ministry of the Environment
Municipal Wells - Diten Consulting



Legend

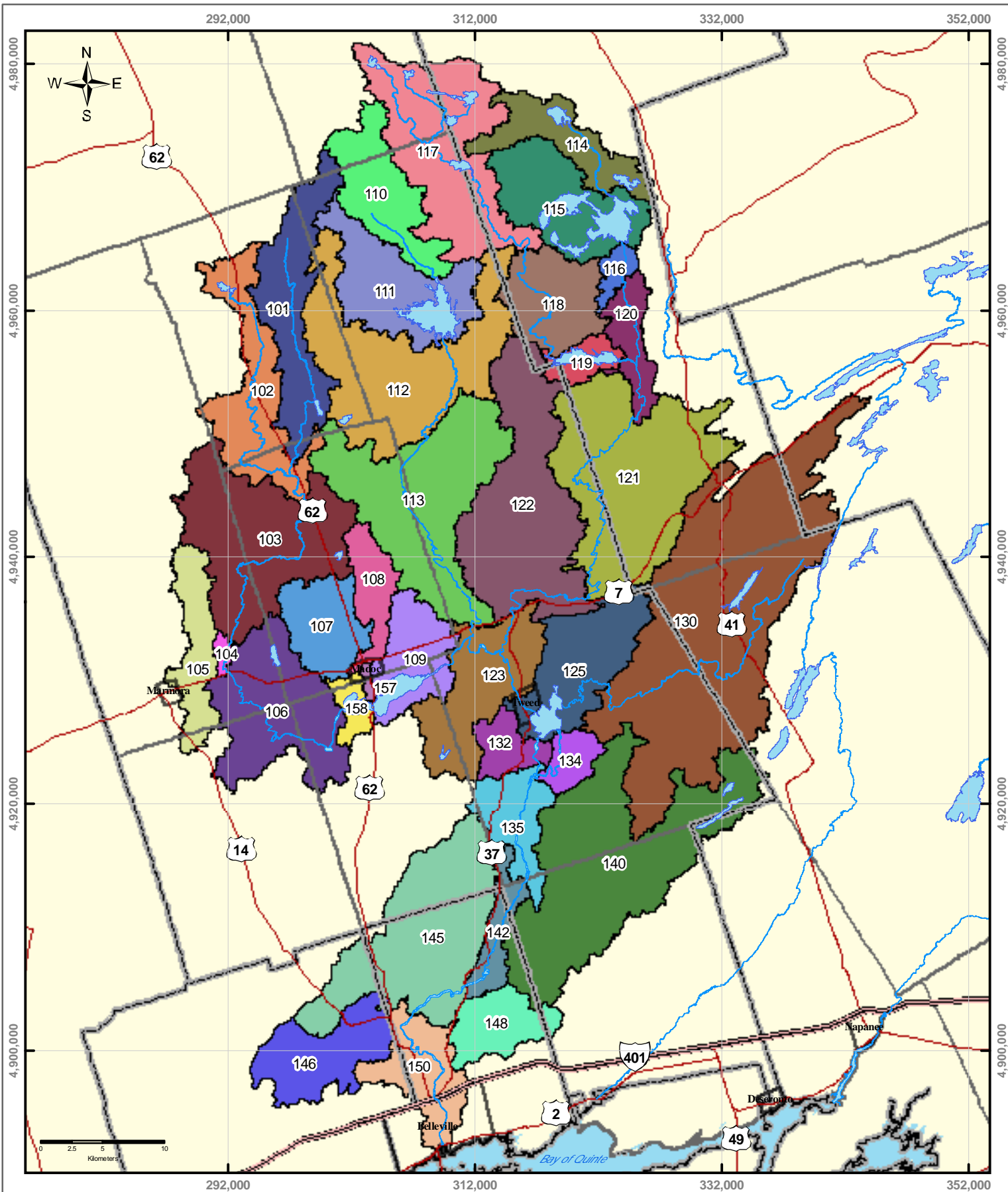
- ★ Intake
 - Roads
 - ▨ Populated Areas
 - ▭ Roblin Lake
- | Lake Bathymetry (m) | |
|---------------------|-----------------|
| — 96.0 - 97.3 | — 106.4 - 108.0 |
| — 97.4 - 98.8 | — 101.9 - 103.0 |
| — 98.9 - 100.3 | — 103.1 - 104.5 |
| | — 108.1 - 109.0 |
| | — 109.1 - 110.3 |
| | — 104.6 - 106.3 |
| | — 1m Contour |

Map 2.4 Roblin Lake Intake & Bathymetry

DISCLAIMER:
The information conveyed by this map is regional in nature and is not suitable for use in site specific evaluations.

Produced by Quinte Conservation under license with the Ontario Ministry of Natural Resources. Copyright Quinte Conservation and the Queen's Printer for Ontario, 2008.
Data is projected in NAD 83 UTM Zone 18N.

DIGITAL MAPPING SOURCES:
Digital Mapping Sources:
Base Map - Ontario Ministry of Natural Resources
Surface Water Intakes - Ontario Ministry of the Environment
Municipal Wells - Dissen Consulting



Quinte Conservation
 Moira River, Napanee Region
 and Prince Edward Region Watersheds
 RR # 2, 2081 Old Highway # 2,
 Belleville, Ontario, K8N 1Z2
 www.quintecconservation.ca, 613-968-3434

Legend

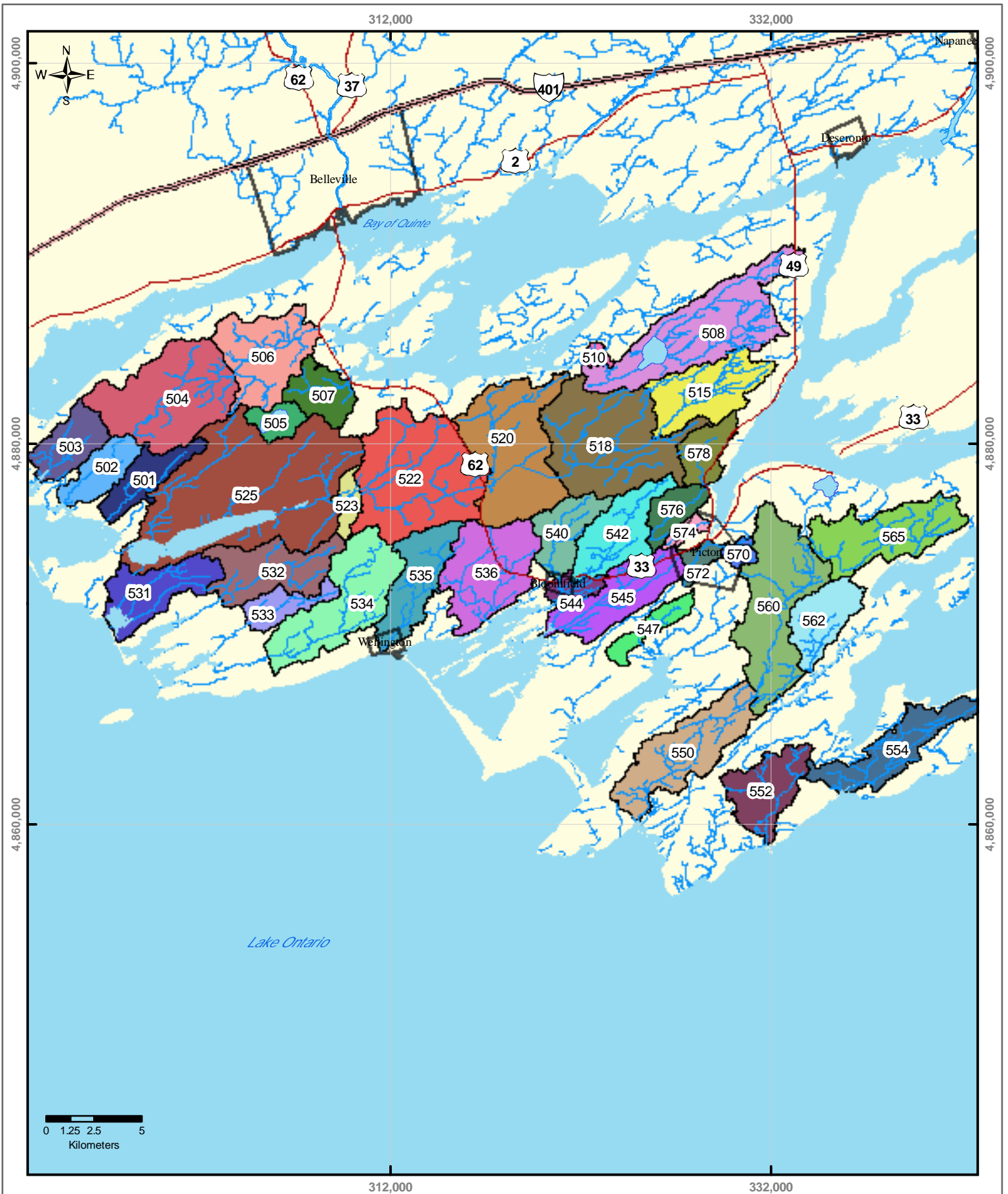
- Highway 401
- Rivers
- Populated Areas
- Township Boundaries
- Highways
- Lakes
- County Boundaries

Map 4.1 Moira Catchments

DISCLAIMER
 The information conveyed by this map is regional in nature and is not suitable for use in site specific evaluations.

Produced by Quinte Conservation under license with the Ontario Ministry of Natural Resources. Copyright Quinte Conservation and the Queen's Printer for Ontario, 2008. Data is projected in NAD83 UTM Zone 18N.

DIGITAL MAPPING SOURCES:
 Base Map - Ontario Ministry of Natural Resources
 Subcatchments - Derived using Airbyte
 Gauge Locations - Water Survey of Canada



Legend

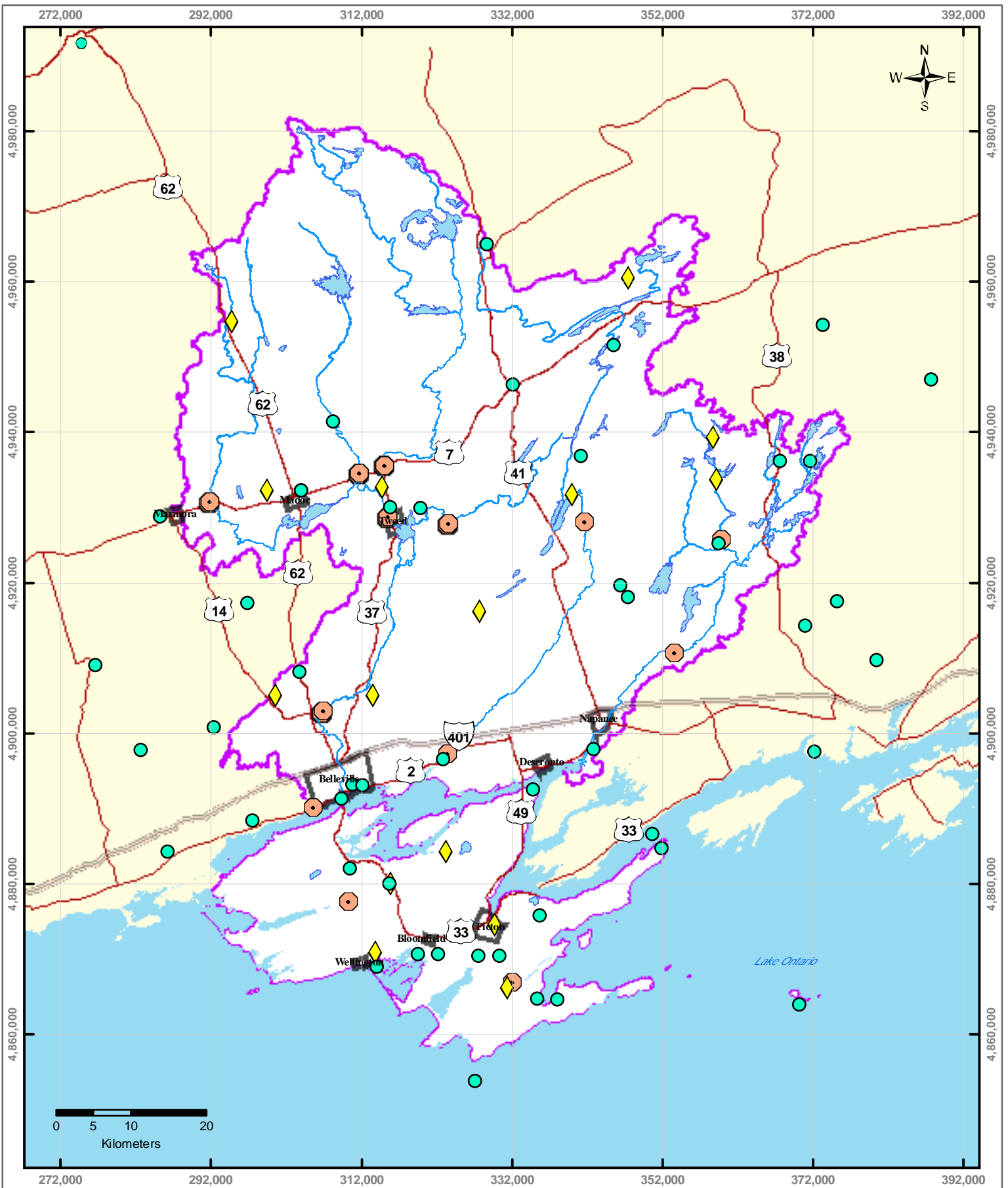
- Highway 401
- Rivers
- Populated Areas
- Highways
- Lakes








DISCLAIMER:
 The information conveyed by this map is regional in nature and is not suitable for use in site-specific evaluations.

Produced by Quinte Conservation under license with the Ontario Ministry of Natural Resources. Copyright Quinte Conservation and the Queen's Printer for Ontario, 2008. Data is projected in NAD83 UTM Zone 18N.

DIGITAL MAPPING SOURCES:
 Base Map - Ontario Ministry of Natural Resources
 Subcatchments - Derived using ArcHydro
 Gauge Locations - Water Survey of Canada

Map 4.2 Prince Edward County Catchments



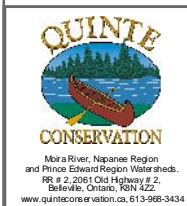
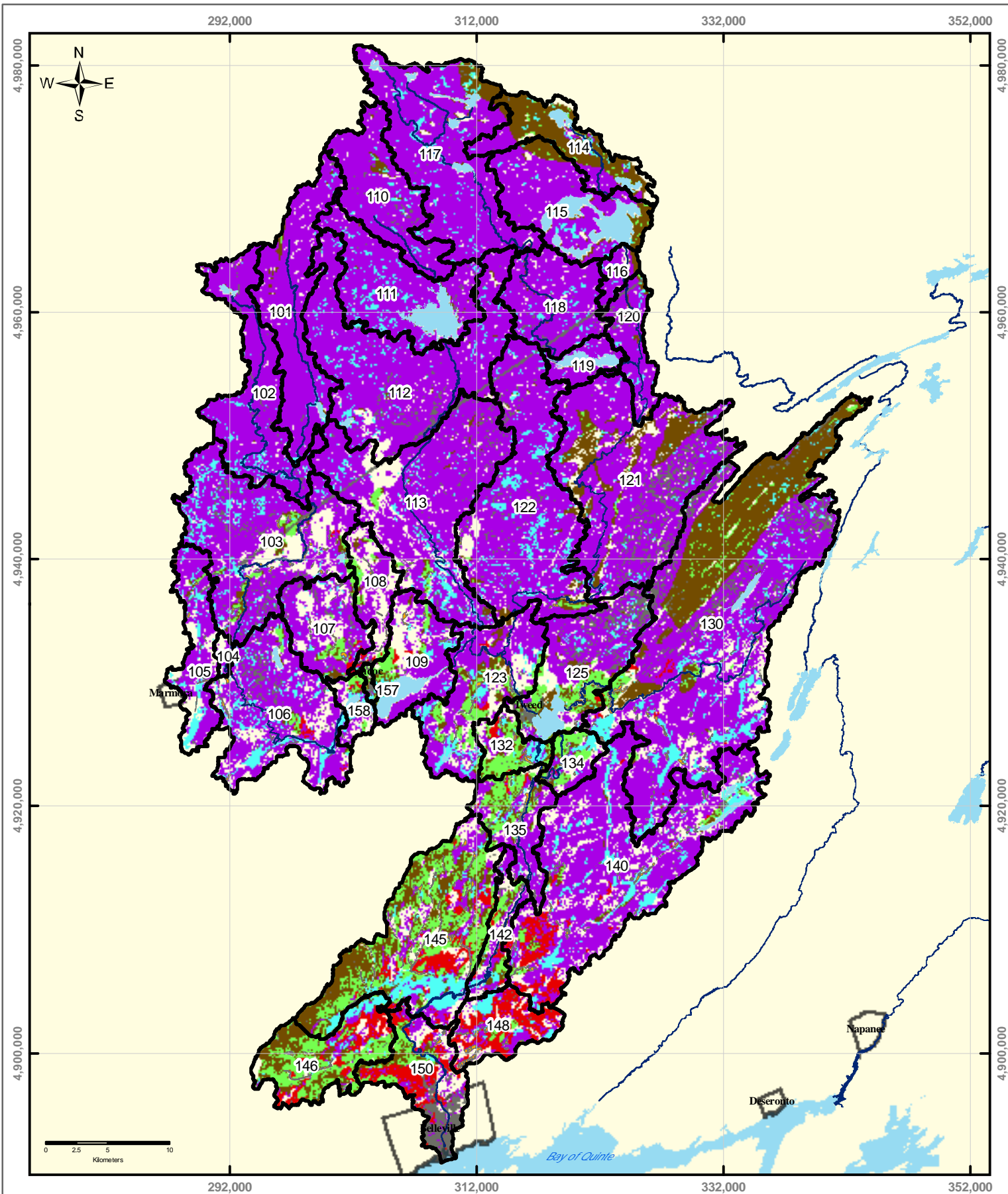
- Legend*
-  Meteorological Stations
 -  Highway 401
 -  Rivers
 -  Snow Survey Sites
 -  Highways
 -  Lakes
 -  Gauge Stations

Map 4.3 Quinte Area Monitoring Stations

DISCLAIMER
 The information conveyed by this map is regional in nature and is not suitable for use in site specific applications.

Produced by Quinte Conservation under license with the Ontario Ministry of Natural Resources. Copyright Quinte Conservation and the Queen's Printer for Ontario, 2009.
 Data is projected in NAD83 UTM Zone 18N.

DIGITAL MAPPING SOURCES:
 Base Map - Ontario Ministry of Natural Resources Subcatchments - Derived using ArcHydro
 Gauge Locations - Water Survey of Canada



Legend

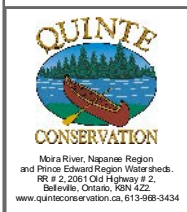
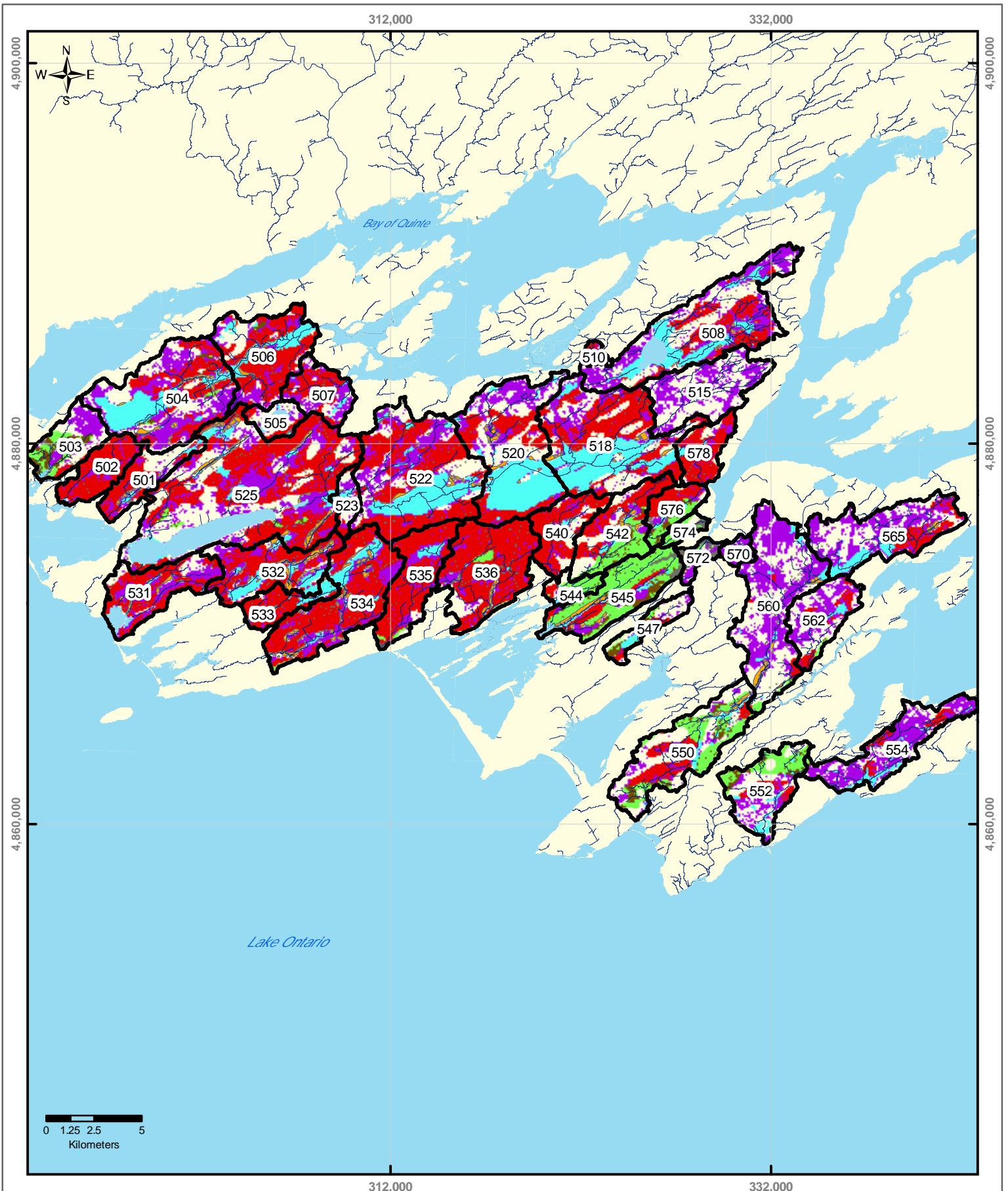
- | | |
|---|---|
| RU 1 Impervious Surfaces (Includes Exposed Bedrock Areas) | RU 6 Low Veg Cover on Clays, Clay Loams, & Loam soils |
| RU 2 Open Water (Direct Contribution to Lakes) | RU 7 Low Veg Cover on Loamy Sands, Sands, Sandy Loams |
| RU 3 Other Lakes | RU 8 High Veg Cover on Slow Infiltration Soils |
| RU 4 Wetland or Other Flooded Area | RU 9 High Veg Cover on Fast Infiltration Soils |
| RU 5 Thin Soil on Bedrock, Bottom Land, Muck & Peat | Moira Subcatchments |

Map 4.4 Moira Response Units

DISCLAIMER
The information conveyed by this map is regional in nature and is not suitable for use in site specific evaluations.

Produced by Quinte Conservation under license with the Ontario Ministry of Natural Resources. Copyright Quinte Conservation and the Queen's Printer for Ontario, 2008.
Data is projected in NAD83 UTM Zone 18N.

DIGITAL MAPPING SOURCES:
Base Map - Ontario Ministry of Natural Resources
Subcatchments - Derived using ArcHydro
Land Cover & Soils - Ontario Ministry of Natural Resources



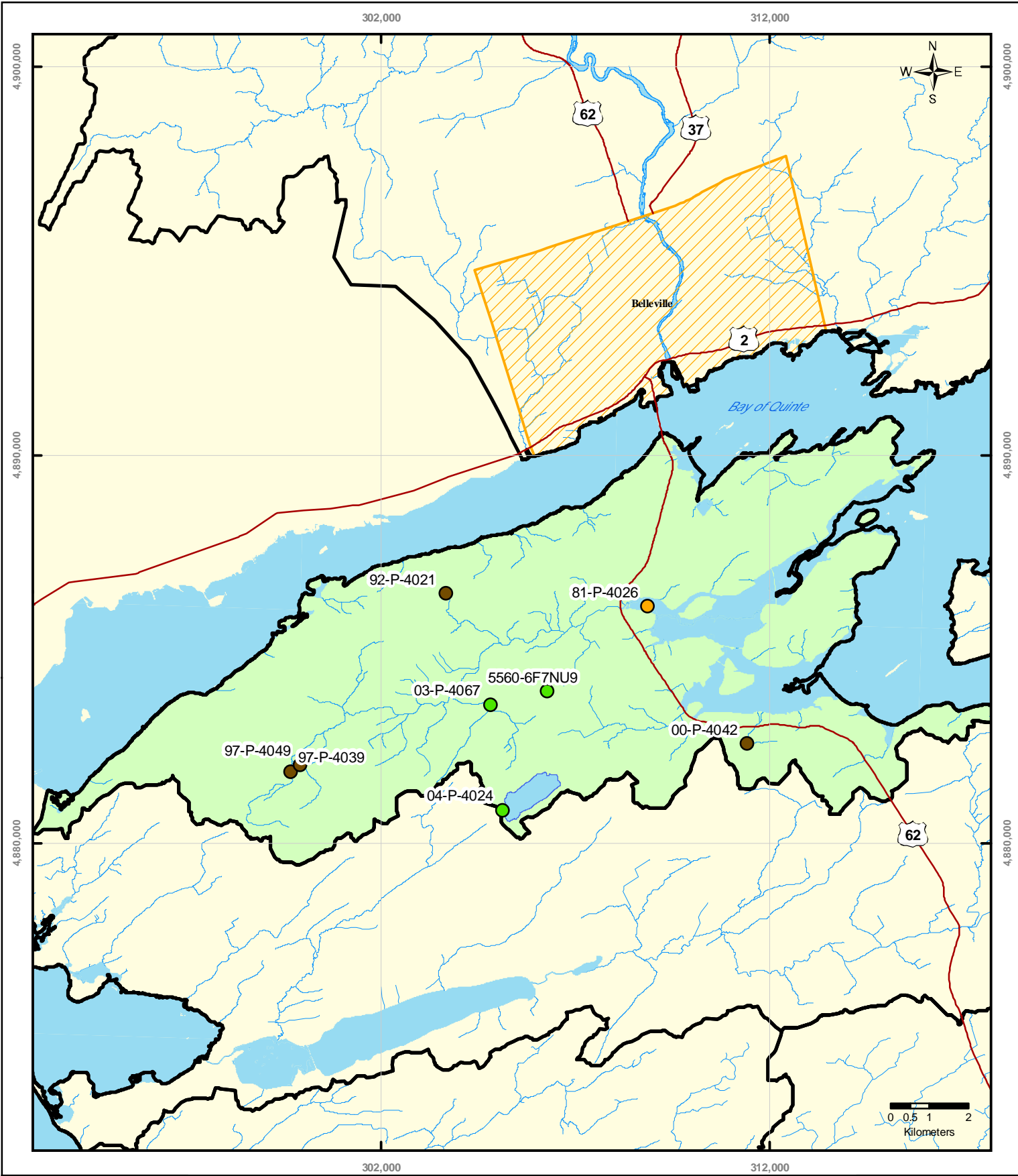
- Legend*
- RU 1 Impervious Surfaces (Includes Exposed Bedrock Areas)
 - RU 2 Open Water (Direct Contribution to Lakes)
 - RU 3 Other Lakes
 - RU 4 Wetland or Other Flood Area
 - RU 5 Low Veg Cover on Thin Soil (Bedrock, Bottom Land, Muck, & Peat)
 - RU 6 Low Veg Cover on Clays, Clay Loams, & Loam Sands
 - RU 7 Low Veg Cover on Loamy sands, Sands, & Sandy Loams
 - RU 8 High Veg Cover on Slow Infiltration Soils
 - RU 9 High Veg Cover on Fast Infiltration Soils
 - PEC Subcatchments

DISCLAIMER:
 The information conveyed by this map is regional in nature and is not suitable for use in site-specific evaluations.

Produced by Quinte Conservation under license with the Ontario Ministry of Natural Resources. Copyright Quinte Conservation and the Queen's Printer for Ontario, 2008.
 Data is projected in NAD83 UTM Zone 18N.

DIGITAL MAPPING SOURCES:
 Base Map - Ontario Ministry of Natural Resources
 Subcatchments - Derived using ArcHydro
 Gauge Locations - Water Survey of Canada

Map 4.5 Prince Edward County Response Units



Moira River, Napanee Region
and Prince Edward Region Watersheds.
RR # 2, 22051 Old Highway # 2,
Belleville, Ontario, K8N 4Z2.
www.quinteconservation.ca, 613-968-3434

Legend

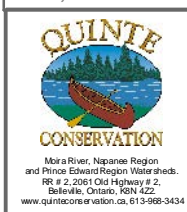
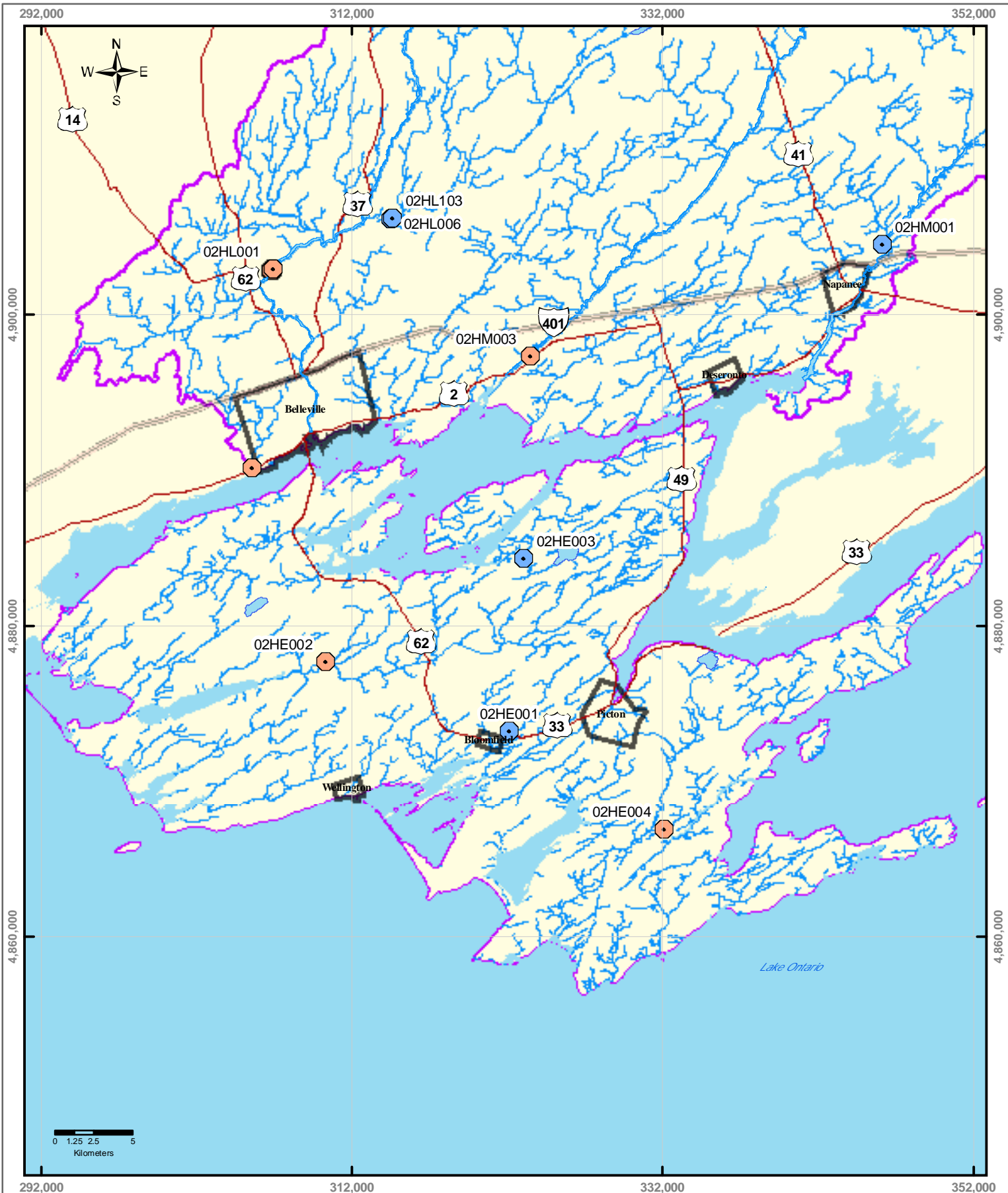
- | | | |
|----------------|-----------------|------------------------|
| Permits | — Highways | Ameliasburgh Catchment |
| ● Active | Populated Areas | Surrounding Catchments |
| ● Dormant | Lakes | |
| ● Wetland | | |

Map 5.1 Permits to Take Water

DISCLAIMER:
The information conveyed by this map is regional in nature and is not suitable for use in site specific evaluations.

Produced by Quinte Conservation under license with the Ontario Ministry of Natural Resources. Copyright Quinte Conservation and the Queen's Printer for Ontario, 2008.
Data is projected in NAD 83 UTM Zone 18N.

DIGITAL MAPPING SOURCES:
Base Map - Ontario Ministry of Natural Resources
Surface Water Intakes - Ontario Ministry of the Environment
Municipal Wells - Dusen Consulting



Legend

	Historic Gauges		Highway 401		Rivers
	Active Stream Gauges		Highways		Lakes

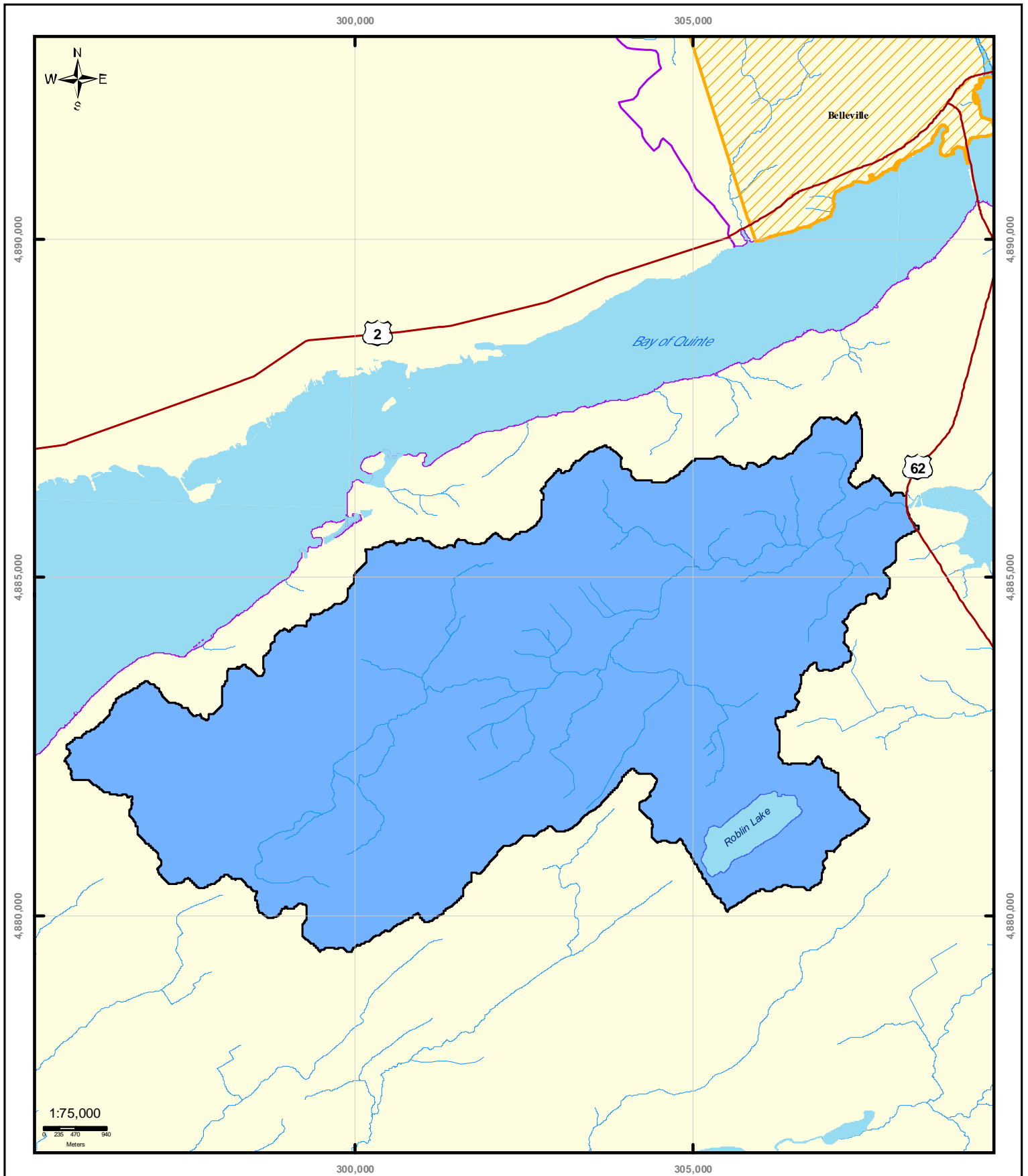
Map 5.2

Water Survey of Canada Gauges in Prince Edward County

DISCLAIMER
The information conveyed by this map is regional in nature and is not suitable for use in site specific evaluations.

Produced by Quinte Conservation under license with the Ontario Ministry of Natural Resources. Copyright Quinte Conservation and the Queen's Printer for Ontario, 2009. Data is projected in NAD83 UTM Zone 18N.

DIGITAL MAPPING SOURCES:
Base Map - Ontario Ministry of Natural Resources Subcatchments - Derived using ArcHydro Gauge Locations - Water Survey of Canada



Mora River, Napanee Region
and Prince Edward Region Watersheds
RR # 2, 2061 Old Highway # 2,
Belleville, Ontario, K8N 4Z2,
www.quinteconservation.ca, 613-968-3434

Legend

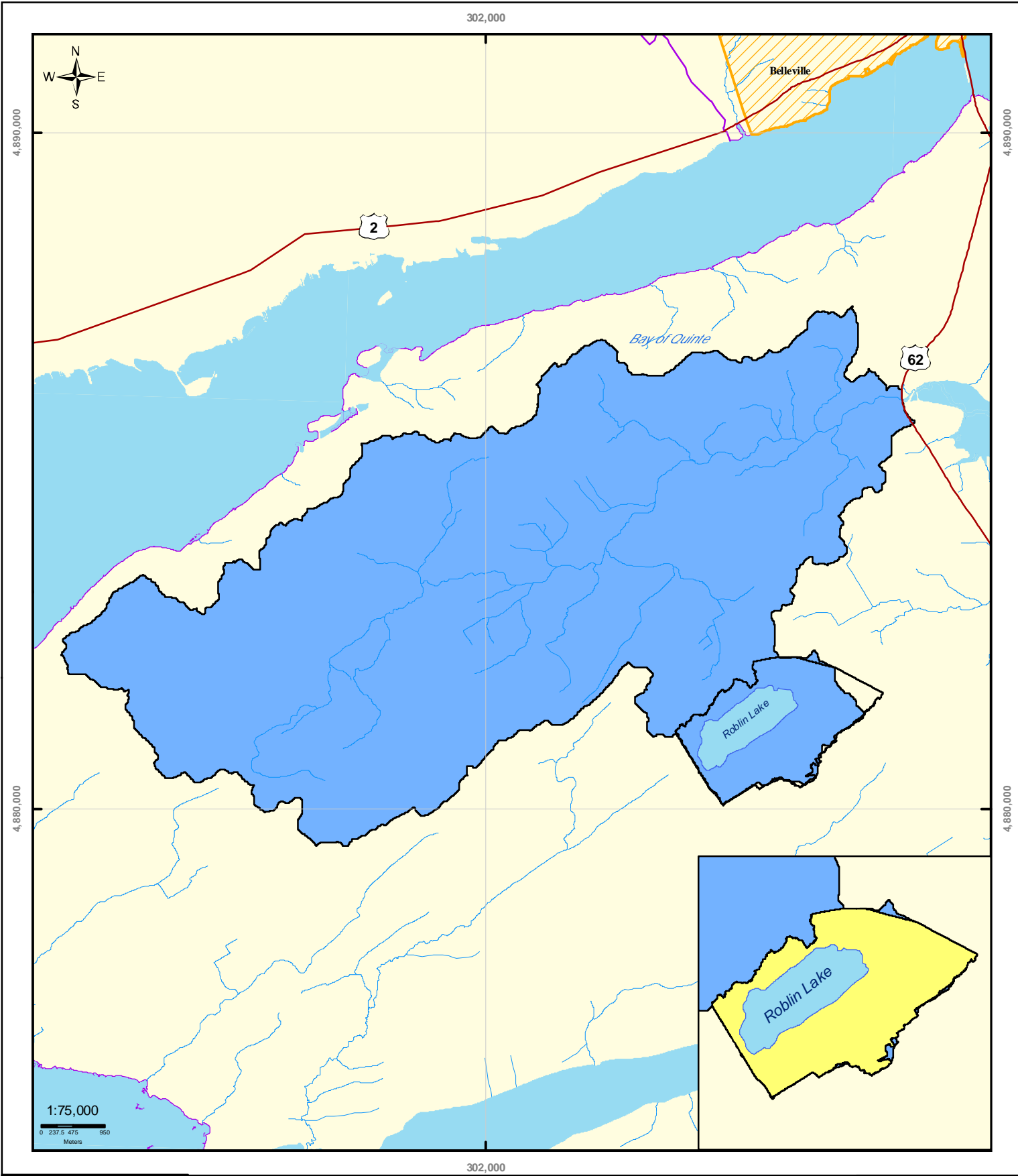
- Average Hydrological Condition Stress**
- Highways
 - ▨ Populated Areas
 - ▭ Sawguin Creek - Low (0-20)
 - Creeks
 - ▭ Waterbody

DISCLAIMER:
The information conveyed by this map is regional in nature and is not suitable for use in site specific evaluations.

Produced by Quinte Conservation under license with the Ontario Ministry of Natural Resources. Copyright Quinte Conservation and the Queen's Printer for Ontario, 2008. Data is projected in NAD 83 UTM Zone 18N.

DIGITAL MAPPING SOURCES:
Digital Mapping Sources:
Base Map - Ontario Ministry of Natural Resources
Surface Water Features - Ontario Ministry of the Environment
Municipal Wells - Dillon Consulting

Map 6.1 Percent Water Demand-Current Conditions



Maita River, Napanee Region
and Prince Edward Region Watersheds.
RR # 2, 23051 Old Highway # 2,
Belleville, Ontario, K8N 4Z2.
www.quinteconservation.ca, 613-968-3434

Legend

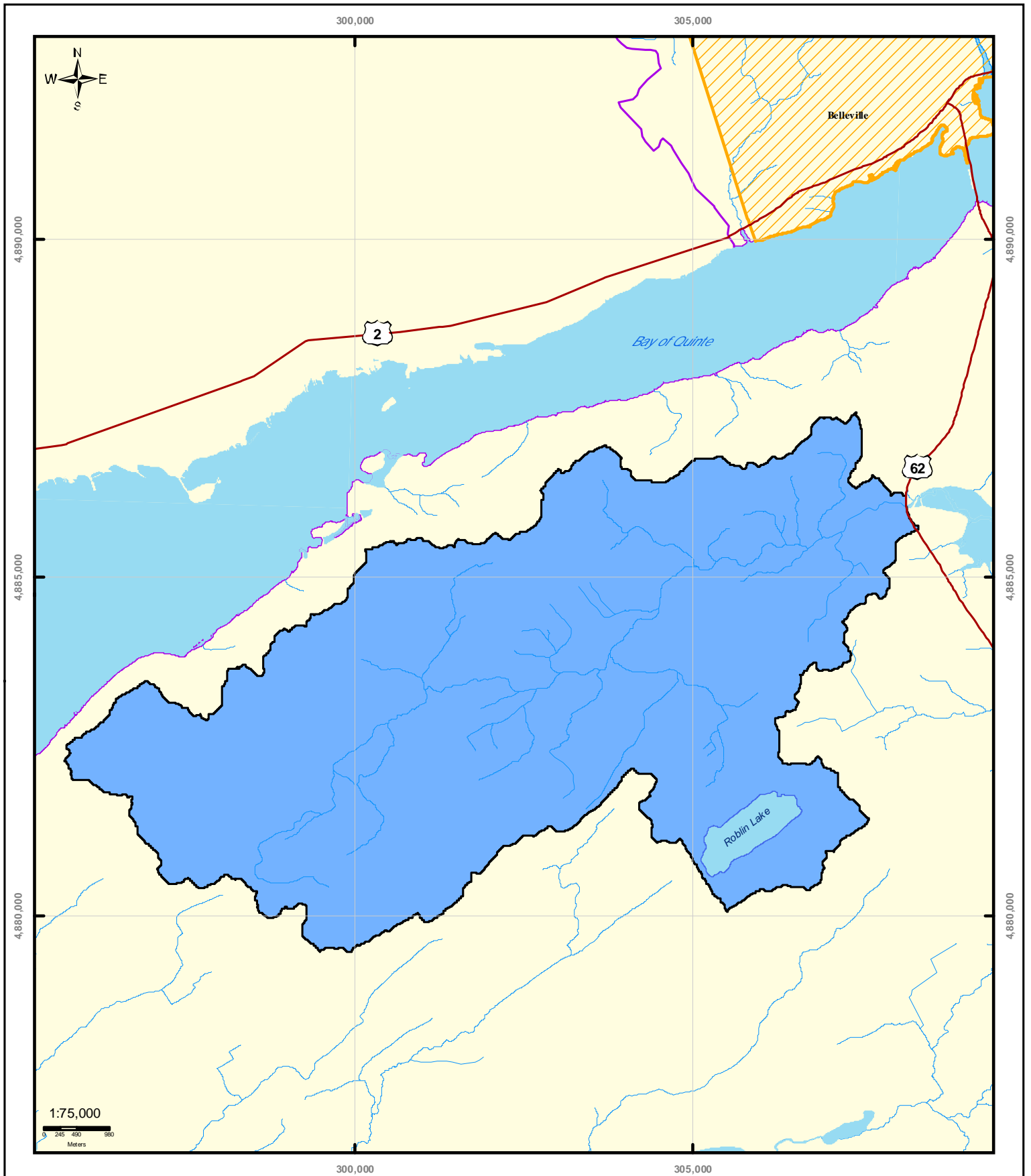
- Highways
- Populated Areas
- Roblin Lake - Moderate (20-50)
- Creeks
- Waterbody
- Sawguin Creek- Low (0-20)

Map 6.2 Percent Water Demand - 2 Year Drought Conditions

DISCLAIMER:
The information conveyed by this map is regional in nature and is not suitable for use in site specific evaluations.

Produced by Quinte Conservation under license with the Ontario Ministry of Natural Resources. Copyright Quinte Conservation and the Queen's Printer for Ontario, 2008.
Data is projected in NAD 83 UTM Zone 18N.

DIGITAL MAPPING SOURCES:
Base Map - Ontario Ministry of Natural Resources
Surface Water Intakes - Ontario Ministry of the Environment
Municipal Wells - Dison Consulting



Mora River, Napanee Region
and Prince Edward Region Watersheds
RR # 2, 2061 Old Highway # 2,
Belleville, Ontario, K8N 4Z2,
www.quinteconservation.ca, 613-968-3434

Legend

- Highways
- Creeks
- ▨ Populated Areas
- Waterbody

Average Hydrological Condition Stress

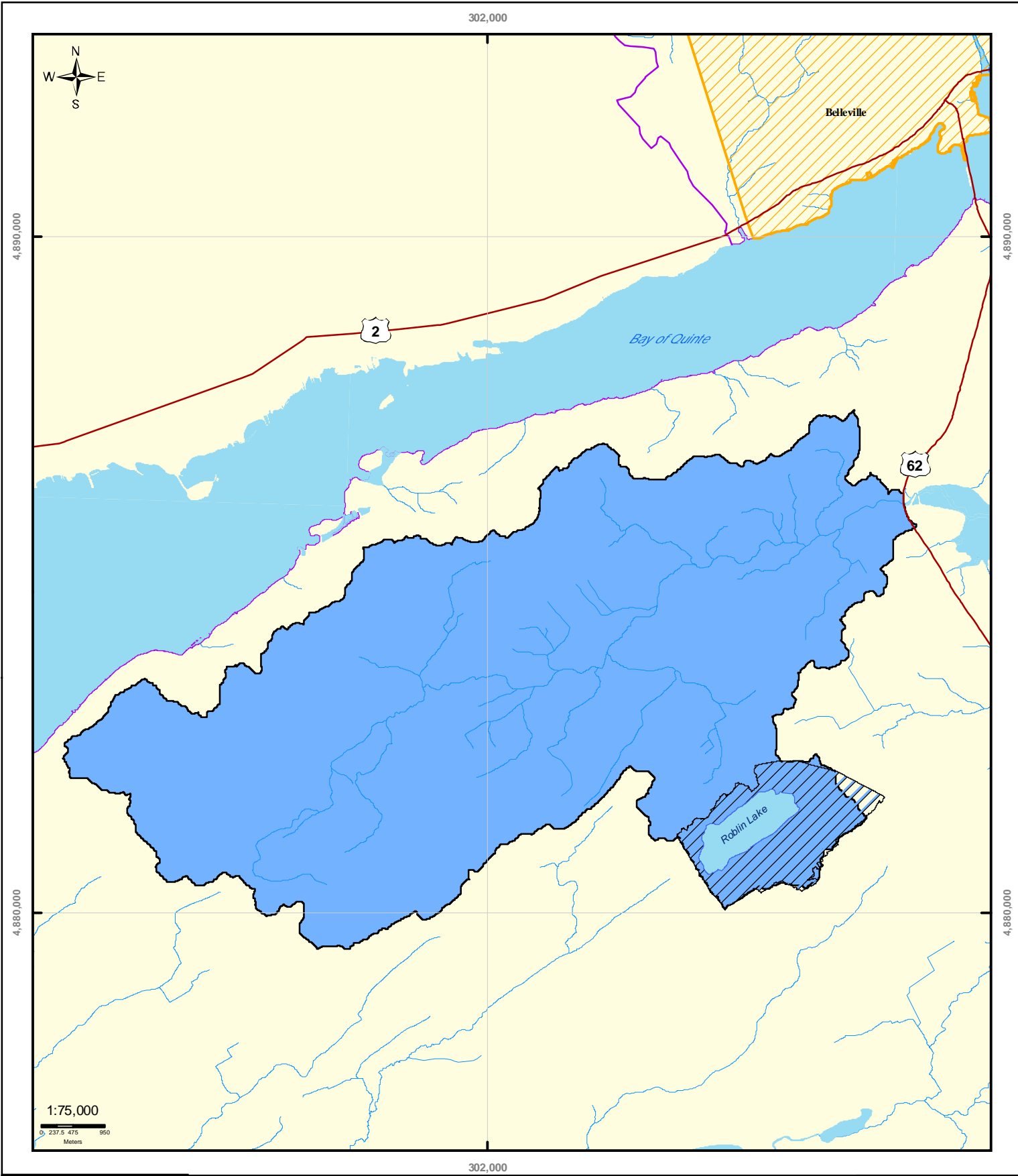
- Sawguin Creek - Low (0-20)

DISCLAIMER:
The information conveyed by this map is regional in nature and is not suitable for use in site specific evaluations.

Produced by Quinte Conservation under license with the Ontario Ministry of Natural Resources. Copyright Quinte Conservation and the Queen's Printer for Ontario, 2008. Data is projected in NAD 83 UTM Zone 18N.

DIGITAL MAPPING SOURCES:
Digital Mapping Sources:
Base Map - Ontario Ministry of Natural Resources
Surface Water Features - Ontario Ministry of the Environment
Municipal Wells - Dillon Consulting

Map 6.2 Percent Water Demand-Future Conditions



Maita River, Napanee Region
and Prince Edward Region Watersheds.
RR # 2, 2361 Old Highway # 2,
Belleville, Ontario, K8N 4Z2.
www.quinteconservation.ca, 613-968-3434

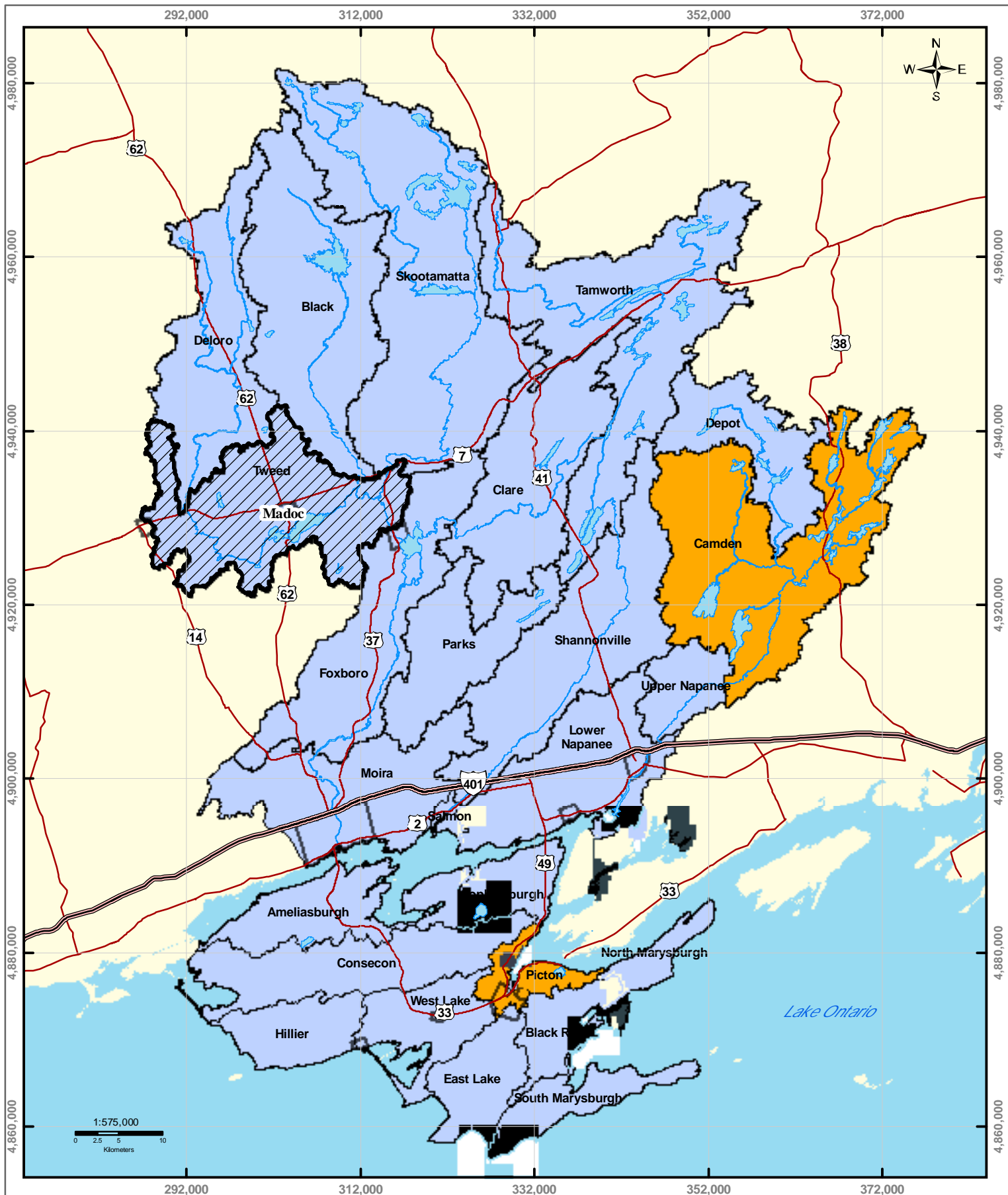
Legend

- Highways
- Creeks
- ▨ Populated Areas
- Waterbody
- ▨ Roblin Lake - Low (0-20)
- Sawguin Creek - Low (0-20)

10 Year Drought

Map 6.3
Percent Water Demand - 10 Year Drought Conditions

DISCLAIMER:
The information conveyed by this map is regional in nature and is not suitable for use in site specific evaluations.
Produced by Quinte Conservation under license with the Ontario Ministry of Natural Resources. Copyright Quinte Conservation and the Queen's Printer for Ontario, 2008.
Data is projected in NAD 83 UTM Zone 18N.
DIGITAL MAPPING SOURCES:
Base Map - Ontario Ministry of Natural Resources
Surface Water Intakes - Ontario Ministry of the Environment
Municipal Wells - Dison Consulting



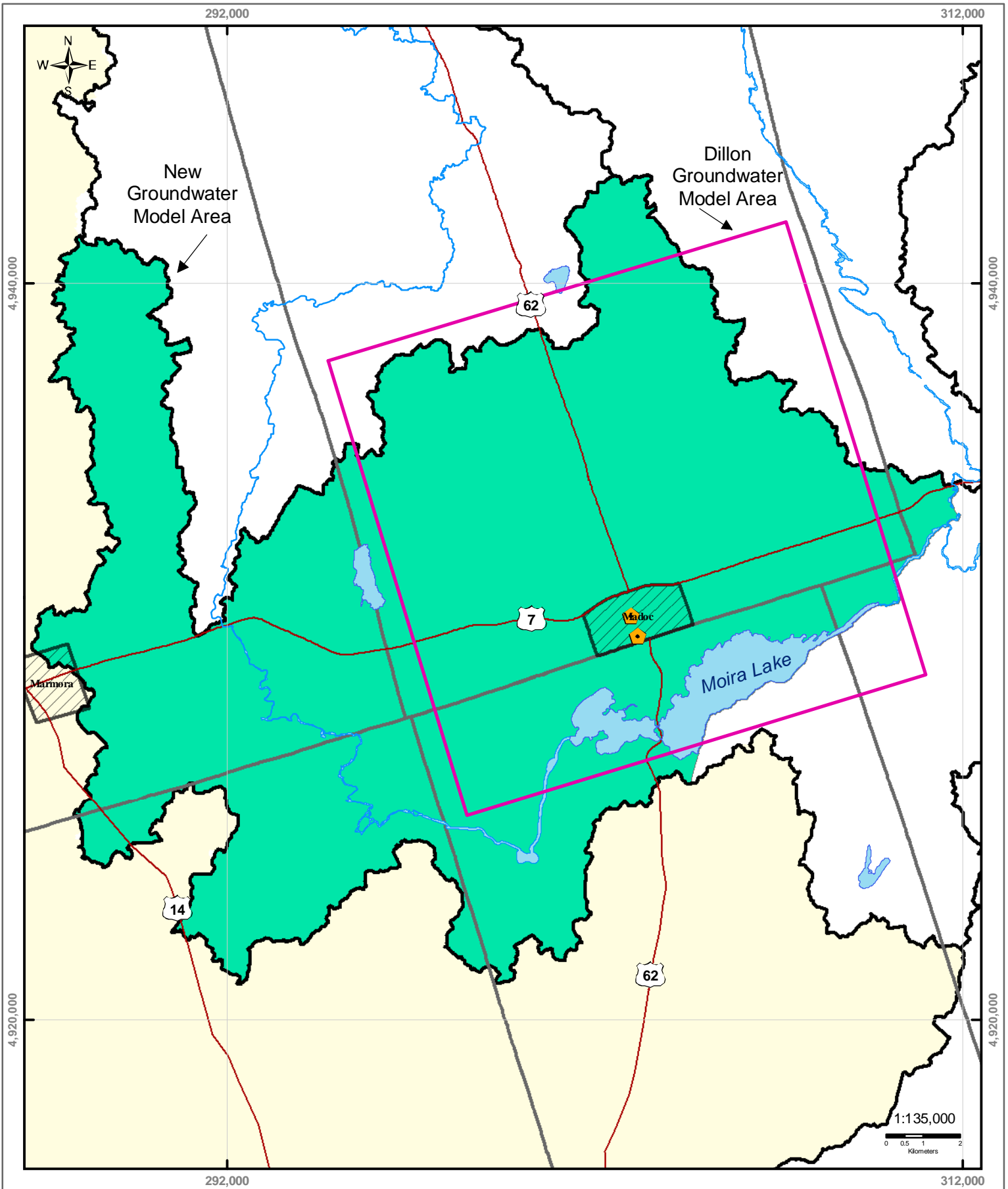
- Legend*
- Highway 401
 - Highways
 - Rivers
 - Lakes
 - Tweed Catchment
 - Low
 - Moderate
- Percent Water Demand**

Figure 1 Subwatershed Groundwater Stress Levels

DISCLAIMER:
The information conveyed by this map is regional in nature and is not suitable for use in site specific evaluations.

Produced by Quinte Conservation under license with the Ontario Ministry of Natural Resources. Copyright Quinte Conservation and the Queen's Printer for Ontario, 2008. Data is projected in NAD83 UTM Zone 18N.

DIGITAL MAPPING SOURCES:
Base Map - Ontario Ministry of Natural Resources
Stress - Calculated by WHI



Legend

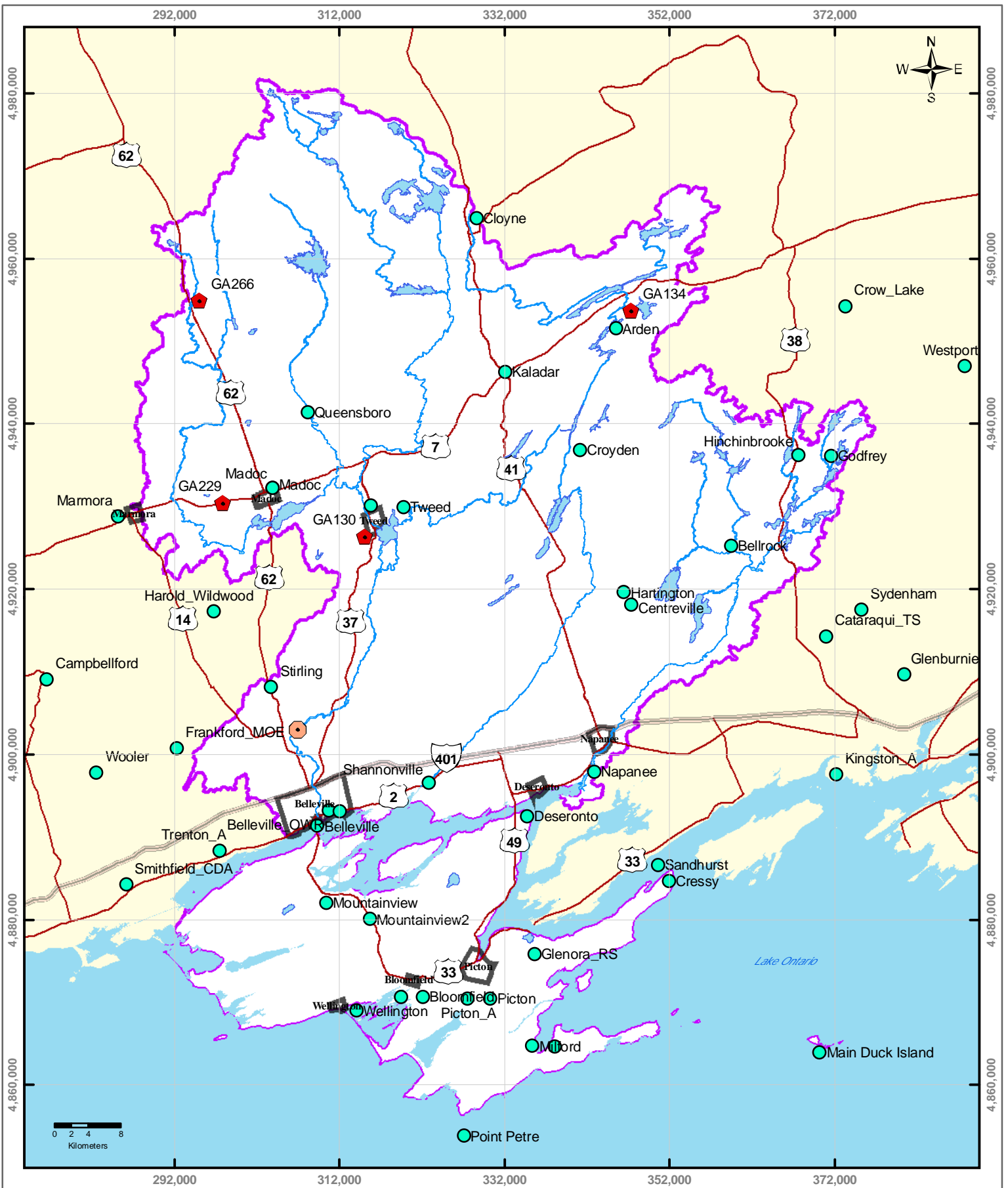
-  Madoc Wells
-  Rivers
-  Dillon Groundwater Model Area
-  Highways
-  Lakes
-  New Groundwater Model Area
-  Highway 401
-  Gauge Catchments

DISCLAIMER
The information conveyed by this map is regional in nature and is not suitable for use in site specific applications.

Produced by Quinte Conservation under license with the Ontario Ministry of Natural Resources. Copyright Quinte Conservation and the Queen's Printer for Ontario, 2008. Data is projected in NAD83 UTM Zone 18N.

DIGITAL MAPPING SOURCES:
Base Map - Ontario Ministry of Natural Resources Subcatchments - Derived using ArcHydro
Gauge Locations - Water Survey of Canada

Figure 2 Groundwater Model Study Area



Legend

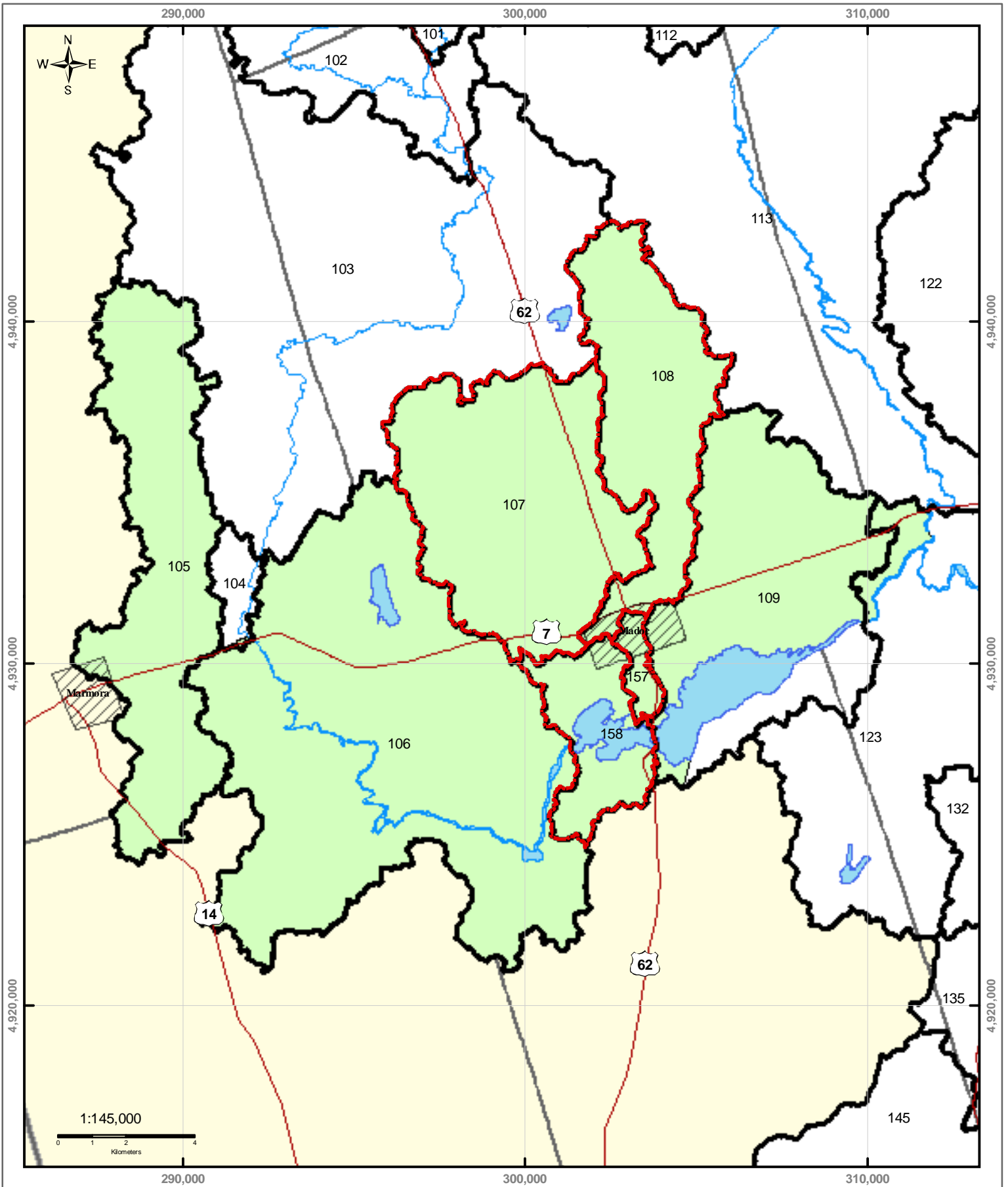
- ◆ Wells
- Meteorological Stations
- Foxboro Gauge
- Highway 401
- Highways
- Rivers
- Lakes

Figure 3 Select Quinte Area Monitoring Stations

DISCLAIMER
 The information conveyed by this map is regional in nature and is not suitable for use in site specific applications.

Produced by Quinte Conservation under license with the Ontario Ministry of Natural Resources. Copyright Quinte Conservation and the Queen's Printer for Ontario, 2008. Data is projected in NAD83 UTM Zone 18N.

DIGITAL MAPPING SOURCES:
 Base Map - Ontario Ministry of Natural Resources Subcommittees - Derived using ArcHydro
 Gauge Locations - Water Survey of Canada



- Legend**
- Highways
 - Rivers
 - Groundwater Model Study Area
 - Tier 3 Subcatchments
 - Highway 401
 - Lakes
 - Surface Water Subcatchments

Figure 7 Madoc Study Area with Subcatchments

DISCLAIMER
 The information conveyed by this map is regional in nature and is not suitable for use in site specific evaluations.

Produced by Quinte Conservation under license with the Ontario Ministry of Natural Resources. Copyright Quinte Conservation and the Queen's Printer for Ontario, 2008. Data is projected in NAD83 UTM Zone 18N.

DIGITAL MAPPING SOURCES:
 Base Map - Ontario Ministry of Natural Resources
 Subcatchments - Derived using ArctHydro
 Gauge Locations - Water Survey of Canada