

UTM Zone 18, NAD 83

Digital Mapping Sources:  
 Base Mapping Features - CANMAP v5.0,  
 MOE NRVIS data

Disclaimer: The information conveyed by this map is regional in nature and is not suitable for use in site specific evaluations. The map should only be interpreted in conjunction with the accompanying written report.

Map accuracy varies with location and decreases further away from well points.

Date: August 2004 ©2004 Queen's Printer for Ontario

**Legend**

- ⊙ Major Population Centres
- Communities
- Expressways
- Highways
- Rivers
- Lakes
- Wetlands
- Lots and Concessions
- <1 igpm (<5 l/min)
- 1 - 2 igpm (5 - 10 l/min)
- 2 - 10 igpm (10 - 45 l/min)
- 10 - 20 igpm (45 - 90 l/min)
- > 20 igpm (>90 l/min)
- Record Pumping Rate
- > 10 igpm (> 45 l/min)
- < 2 igpm (< 10 l/min)

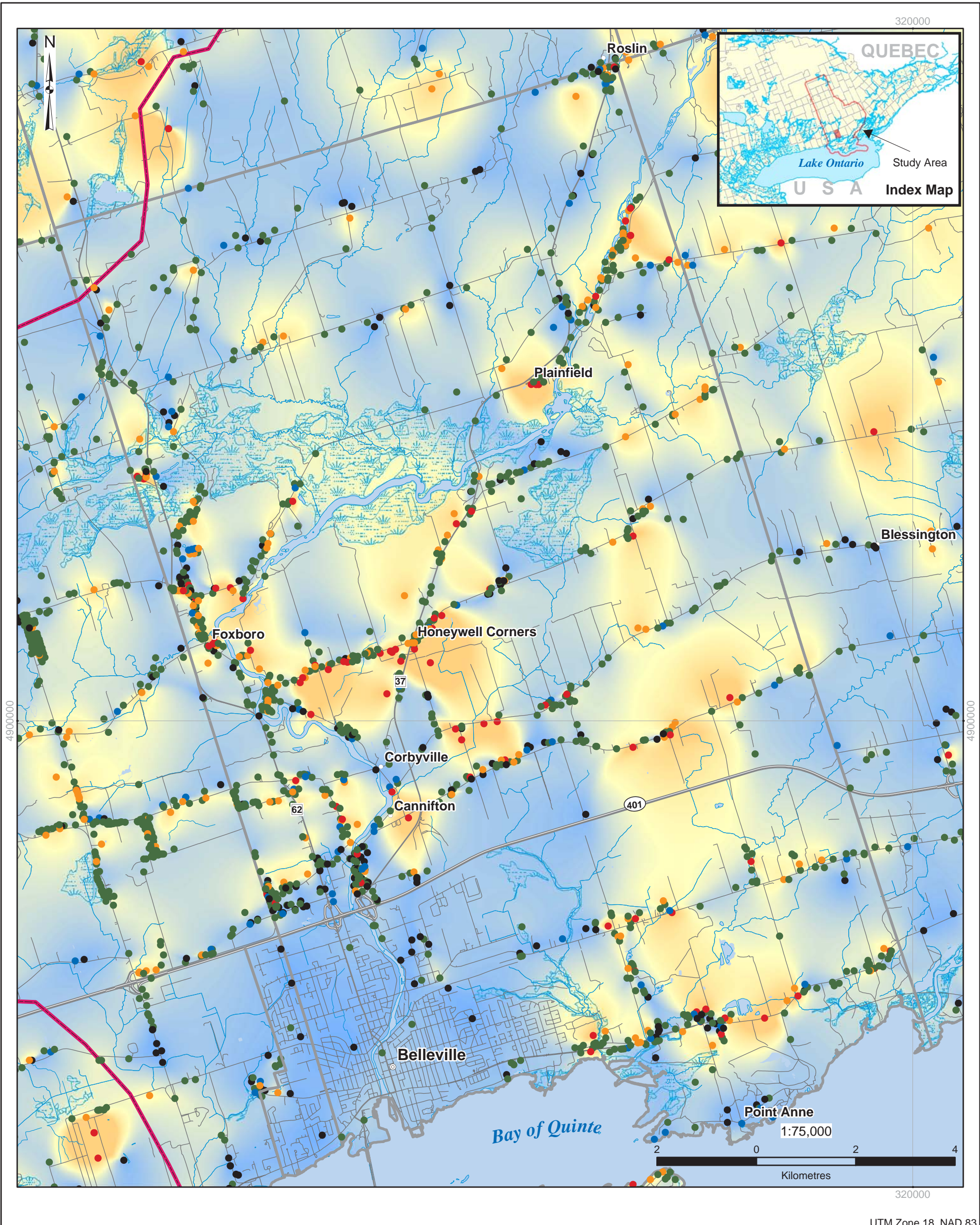


**Town of Bancroft - Well Driller's Recommended Pumping Rate**  
**Quinte Regional Groundwater Study**

BAN-3

G:\Projects\2003\031-119004\_Quinte\GIS\MXDs\Town\_of\_Bancroft\_pump\_rates.mxd





Digital Mapping Sources:  
 Base Mapping Features - CANMAP v5.0,  
 MOE NRVIS data

Disclaimer: The information conveyed by this map is regional in nature and is not suitable for use in site specific evaluations. The map should only be interpreted in conjunction with the accompanying written report. Accuracy of map varies with location.

Date: August 2004 © 2004 Queen's Printer for Ontario

**Legend**

- ⊙ Major Population Centres
  - Communities
  - Expressways
  - Highways
  - Rivers
  - Lakes
  - Wetland Unit
  - Quinte Conservation Watershed
- Pumping Rate**
- <math>< 1 \text{ igpm}</math> (<math>< 5 \text{ l/min}</math>)
  - <math>1 - 2 \text{ igpm}</math> (<math>5 - 10 \text{ l/min}</math>)
  - <math>2 - 10 \text{ igpm}</math> (<math>10 - 45 \text{ l/min}</math>)
  - <math>10 - 20 \text{ igpm}</math> (<math>45 - 90 \text{ l/min}</math>)
  - <math>> 20 \text{ igpm}</math> (<math>> 90 \text{ l/min}</math>)
- Record Pumping Rate**
- Yellow: >10 igpm (> 45 l/min)
  - Blue: <math>< 2 \text{ igpm}</math> (<math>< 10 \text{ l/min}</math>)

in association with  
 Agricultural Watersheds Associates

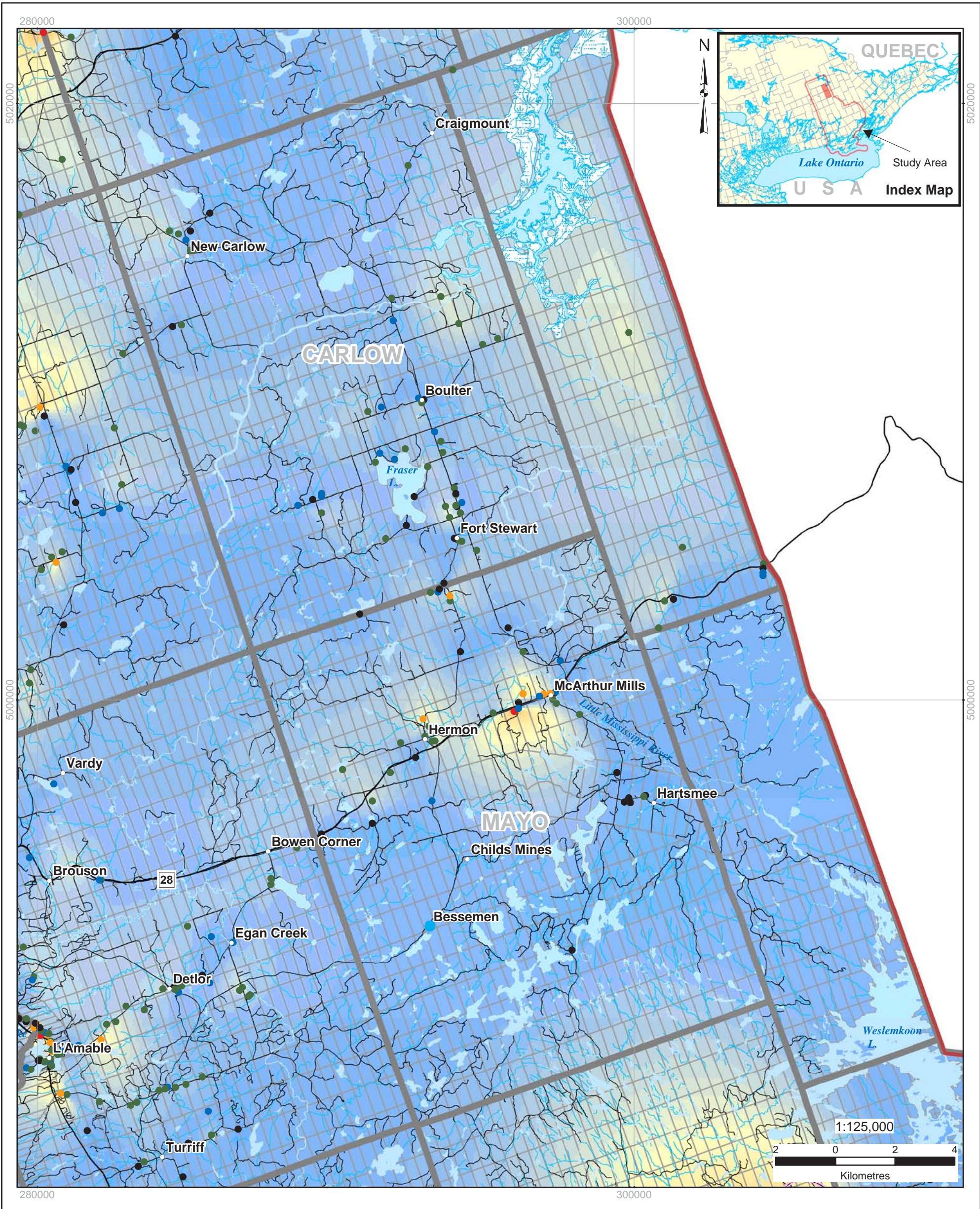
**City of Belleville Well Driller's Recommended Pumping Rate**  
**Quinte Regional Groundwater Study**

BEL-3

G:\Projects\2003\031-119004\_Quinte\GIS\MXDs\City\_of\_Belleville\_pump\_rates.mxd

UTM Zone 18, NAD 83





UTM Zone 18, NAD 83

Digital Mapping Sources:  
 Base Mapping Features - CANMAP v5.0,  
 MOE NRVIS data

Disclaimer: The information conveyed by this map is regional in nature and is not suitable for use in site specific evaluations. The map should only be interpreted in conjunction with the accompanying written report.

Map accuracy varies with location and decreases further away from well points

Date: August 2004 ©2004 Queen's Printer for Ontario

**Legend**

- ⊙ Major Population Centres
- Communities
- Expressways
- Highways
- Rivers
- Lakes
- Wetland Unit
- Lots and Concessions
- ▭ Quinte Conservation Watershed
- ▭ Study Area Boundary
- Record Pumping Rate
- > 10 igpm (> 45 l/min)
- < 2 igpm (< 10 l/min)
- < 1 igpm (< 5 l/min)
- 1 - 2 igpm (5 - 10 l/min)
- 2 - 10 igpm (10 - 45 l/min)
- 10 - 20 igpm (45 - 90 l/min)
- > 20 igpm (> 90 l/min)

in association with

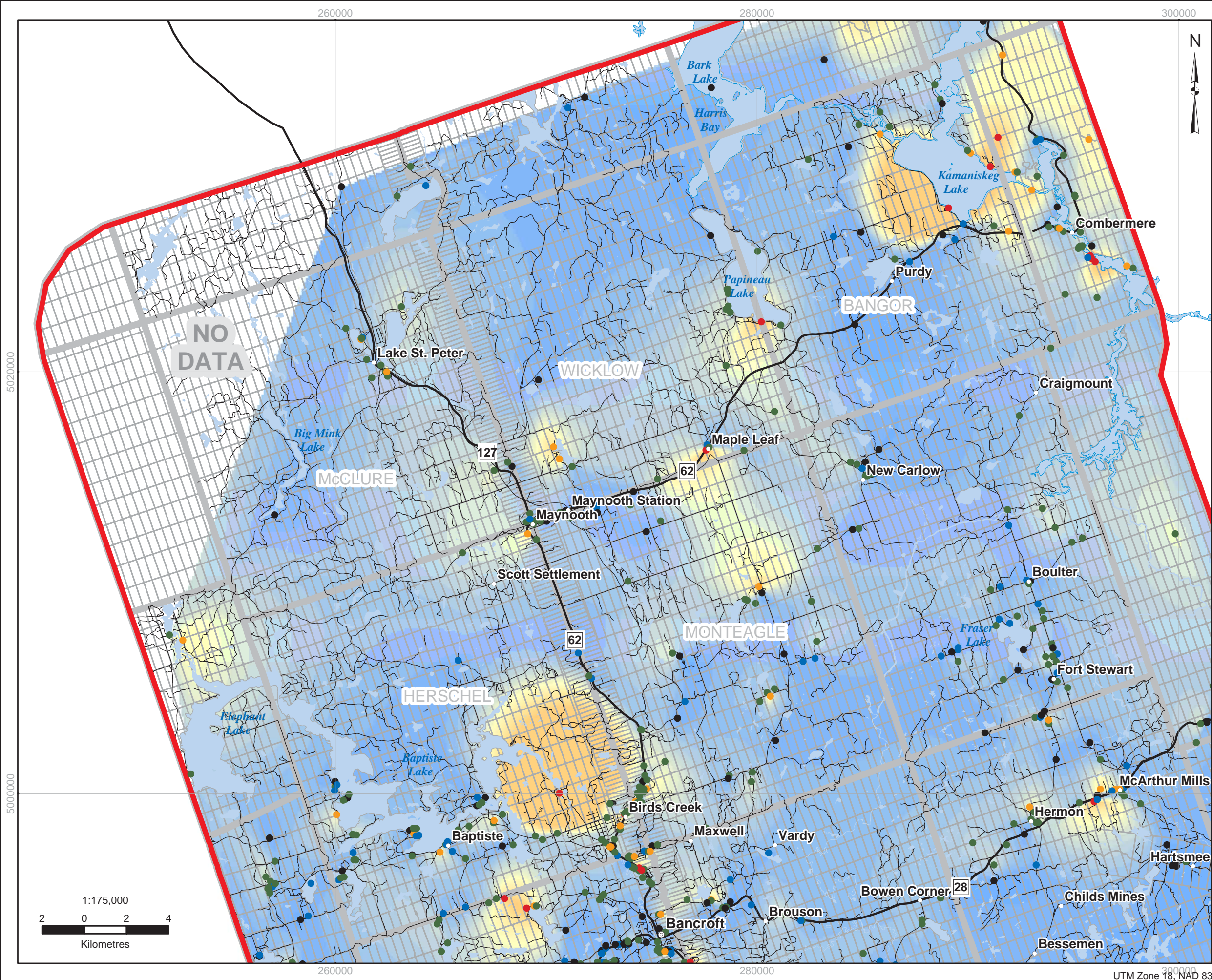
**Township of Carlow and Mayo - Well Driller's  
 Recommended Pumping Rate**  
**Quinte Regional Groundwater Study**

CAR-3

G:\Projects\2003\031-119004\_Quinte\GIS\MXDs\Township\_of\_Carlow\_Mayo\_pump\_rates.mxd



C:\Projects\2003\031-119004\_Quinte\MXD\Municipality\_of\_Hastings\_Highlands\_pump\_rates.mxd



**Legend**

- Major Population Centres
- Communities
- Well Location and Pump Rate
  - <1 igpm (<5 l/min)
  - 1 - 2 igpm (5 - 10 l/min)
  - 2 - 10 igpm (10 - 45 l/min)
  - 10 - 20 igpm (45 - 90 l/min)
  - >20 igpm (>90 l/min)
- Expressways
- Highways
- Roads
- Lakes
- Study Area Boundary
- Lots and Concessions
- Record Pumping Rate
  - > 10 igpm (> 45 l/min)
  - < 2 igpm (< 10 l/min)



Digital Mapping Sources:  
 Base Mapping Features - CANMAP v5.0,  
 MOE NRVIS data

Disclaimer: The information conveyed by this map is regional in nature and is not suitable for use in site specific evaluations. The map should only be interpreted in conjunction with the accompanying written report.

Map accuracy varies with location and decreases further away from well points.

Date: August 2004 © 2004 Queen's Printer for Ontario

**DILLON CONSULTING**

in association with

**Lissom**  
EARTH SCIENCES

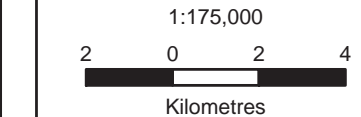
**Golden Associates**

**Agricultural Watersheds Associates**

**Anley**  
CONSULTING INC.

**HAST-3: Municipality of Hastings Highlands - Well Driller Recommended Pumping Rate**

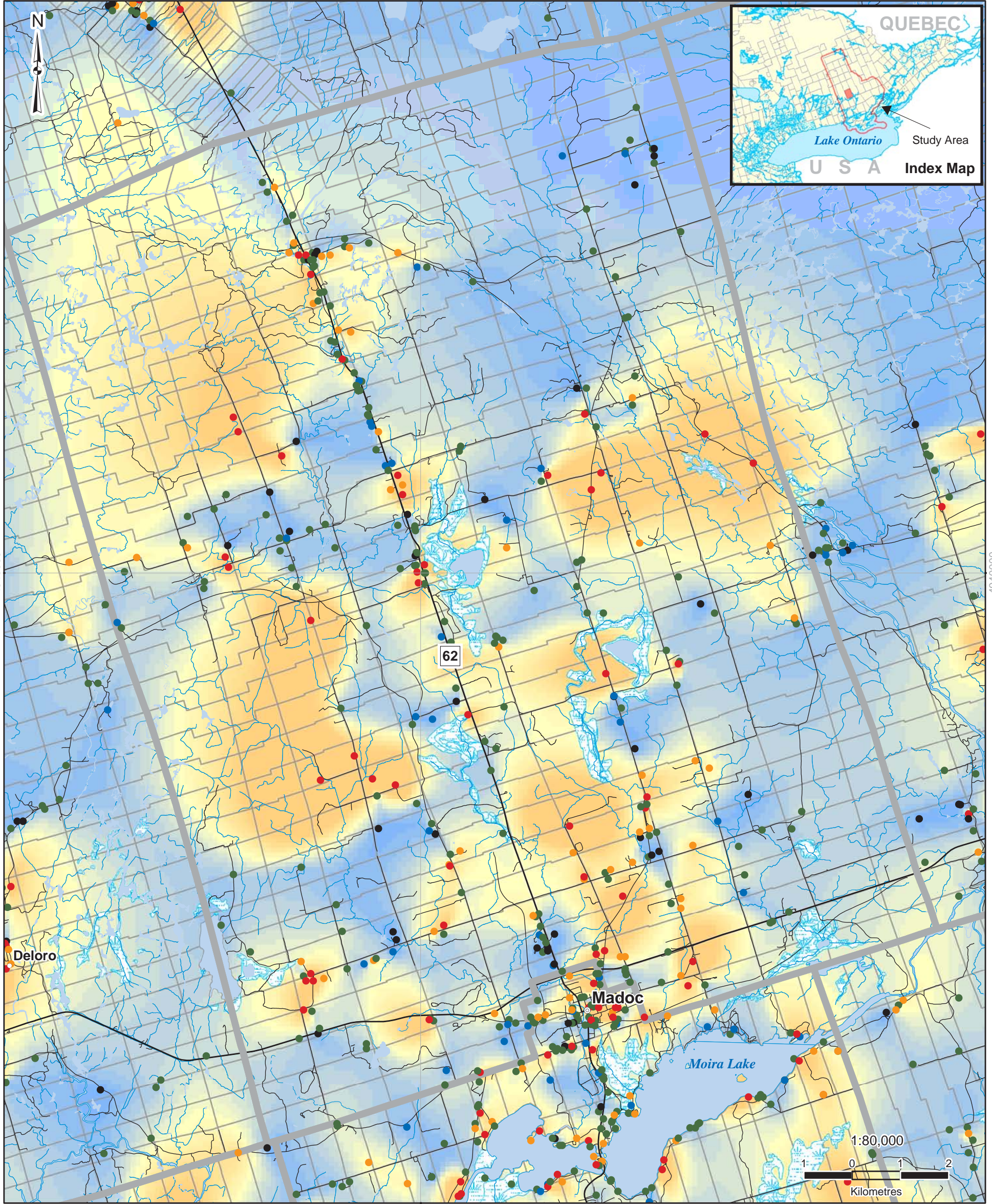
**Quinte Regional Groundwater Study**



UTM Zone 18, NAD 83



300000



300000

1:80,000



UTM Zone 18, NAD 83

Digital Mapping Sources:  
Base Mapping Features - CANMAP v5.0,  
MOE NRVIS data

Disclaimer: The information conveyed by this map is regional in nature and is not suitable for use in site specific evaluations. The map should only be interpreted in conjunction with the accompanying written report.

Map accuracy varies with location and decreases further away from well points.

Date: August 2004 © 2004 Queen's Printer for Ontario

**Legend**

- |                                |                        |                                      |
|--------------------------------|------------------------|--------------------------------------|
| ⊙ Major Population Centres     | — Expressways          | Record Pumping Rate                  |
| ○ Communities                  | — Highways             |                                      |
| ● Well Location and Pump Rate  | — Roads                | Yellow/Orange > 10 igpm (> 45 l/min) |
| ● < 1 igpm (< 5 l/min)         | — Rivers               | Blue < 2 igpm (< 10 l/min)           |
| ● 1 - 2 igpm (5 - 10 l/min)    | — Lakes                |                                      |
| ● 2 - 10 igpm (10 - 45 l/min)  | Wetlands               |                                      |
| ● 10 - 20 igpm (45 - 90 l/min) | — Lots and Concessions |                                      |
| ● > 20 igpm (>90 l/min)        |                        |                                      |

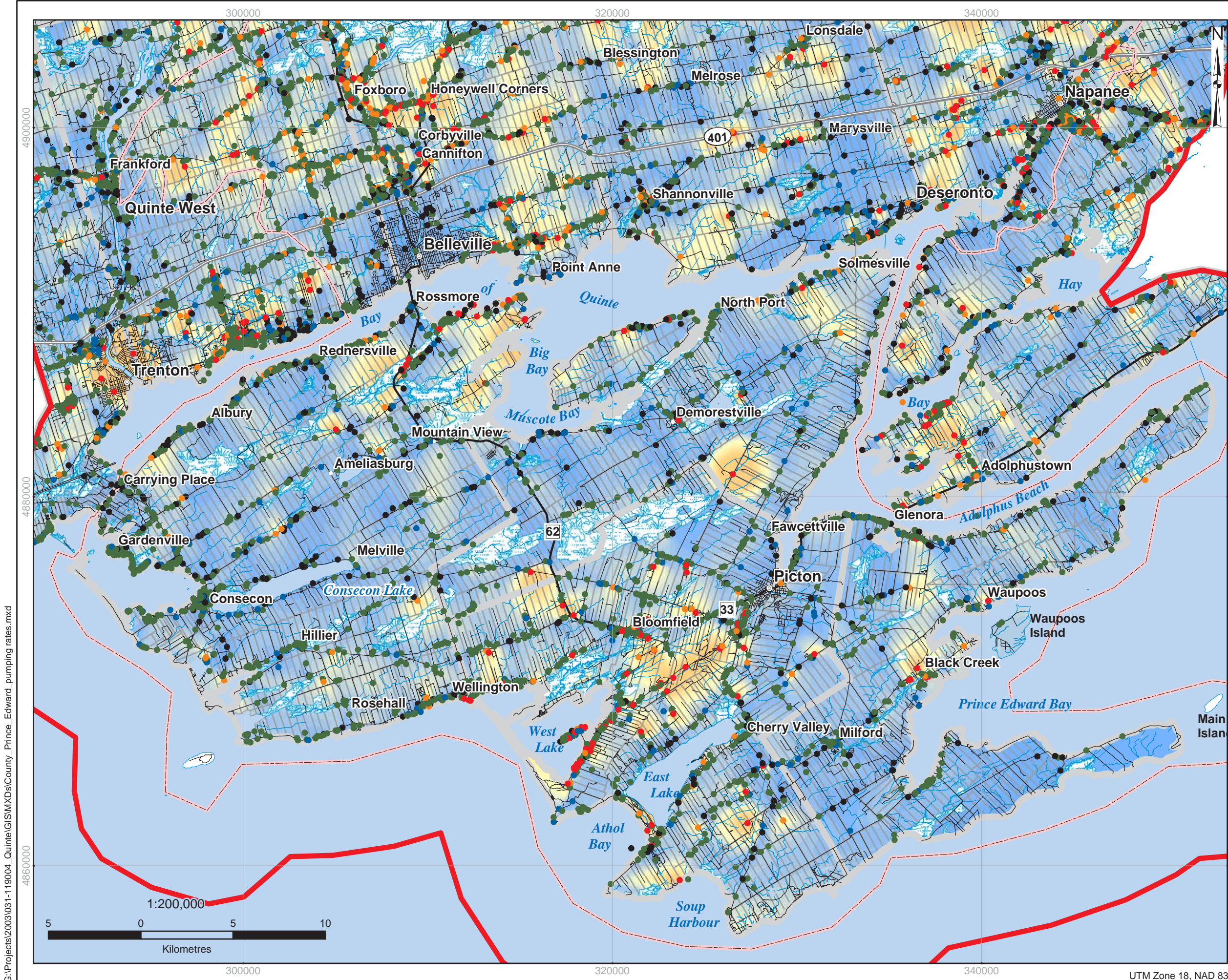


**Township of Madoc - Well Driller's Recommended Pumping Rate**  
**Quinte Regional Groundwater Study**

MAD-3

G:\Projects\2003\031-119004\_Quinte\GIS\MXD\Township\_of\_Madoc\_pump\_rates.mxd





**Legend**

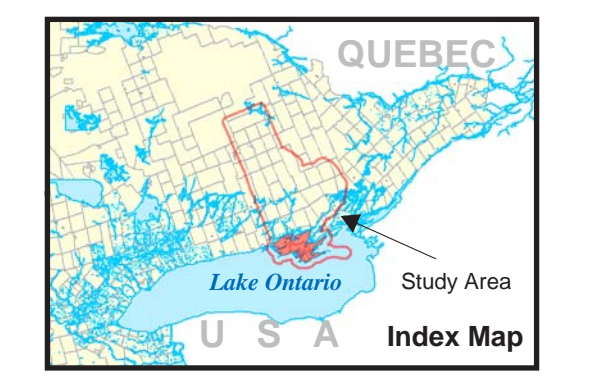
**Pump Rate**

- < 1 igpm (<5 l/min)
- 1 - 2 igpm (5 - 10 l/min)
- 2 - 10 igpm (10 - 45 l/min)
- 10 - 20 igpm (45 - 90 l/min)
- >20 igpm (>90 l/min)

- ⊙ Major Population Centres
- Communities
- Expressways
- Highways
- Rivers
- Lakes
- Wetland Unit
- Quinte Conservation Area
- Study Area Boundary
- Lots and Concessions

**Record Pumping Rate (IGPM)**

- > 10 igpm (> 45 l/min)
- < 2 igpm (< 10 l/min)



Digital Mapping Sources:  
 Base Mapping Features - CANMAP v5.0,  
 Prince Edward Municipal Mapping, MOE NRVIS data

Disclaimer: The information conveyed by this map is regional in nature and is not suitable for use in site specific evaluations. The map should only be interpreted in conjunction with the accompanying written report.

Map accuracy varies with location and decreases further away from well points

Date: August 2004 ©2004 Queen's Printer for Ontario

**DILLON CONSULTING**

in association with

**Lissom**  
EARTH SCIENCES

**Golder Associates**

**Ainley**  
CONSULTING ENGINEERS & PLUMBERS

**Agricultural Watersheds Associates**

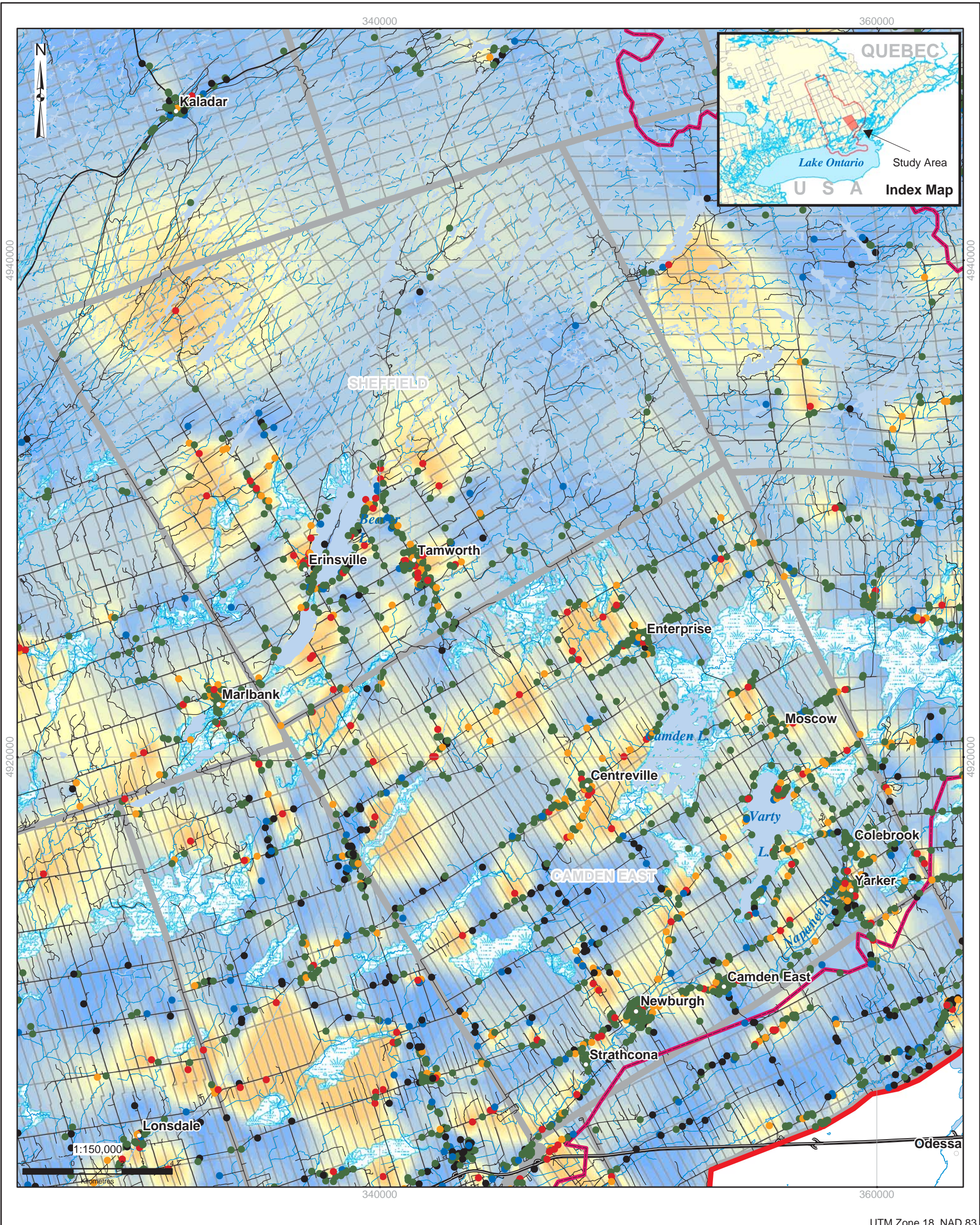
**PEC-3: County of Prince Edward - Well Driller's Recommended Pumping Rates**

**Quinte Regional Groundwater Study**

C:\Projects\2003\031-119004\_Quinte\GIS\MXDs\County\_Prince\_Edward\_pumping\_rates.mxd

UTM Zone 18, NAD 83





Digital Mapping Sources:  
 Base Mapping Features - CANMAP v5.0,  
 MOE NRVIS data

Disclaimer: The information conveyed by this map is regional in nature and is not suitable for use in site specific evaluations. The map should only be interpreted in conjunction with the accompanying written report.

Map accuracy varies with location and decreases further away from well points.  
 Date: August 2004 © 2004 Queen's Printer for Ontario

Logos for **DILLON CONSULTING**, **Lissom**, **Golden Associates**, and **Ainley**. Below the logos, it reads "in association with Agricultural Watersheds Associates".

**Legend**

- ⊙ Major Population Centres
- Communities
- Well Location and Pump Rate
  - < 1 igpm (< 5 l/min)
  - 1 - 2 igpm (5 - 10 l/min)
  - 2 - 10 igpm (10 - 45 l/min)
  - 10 - 20 igpm (45 - 90 l/min)
  - > 20 igpm (>90 l/min)
- Expressways
- Highways
- Rivers
- Lakes
- Wetlands
- Study Area Boundary
- Quinte Conservation Watershed
- Lots and Concessions

Record Pumping Rate  
 > 10 igpm (> 45 l/min)  
 < 2 igpm (< 10 l/min)

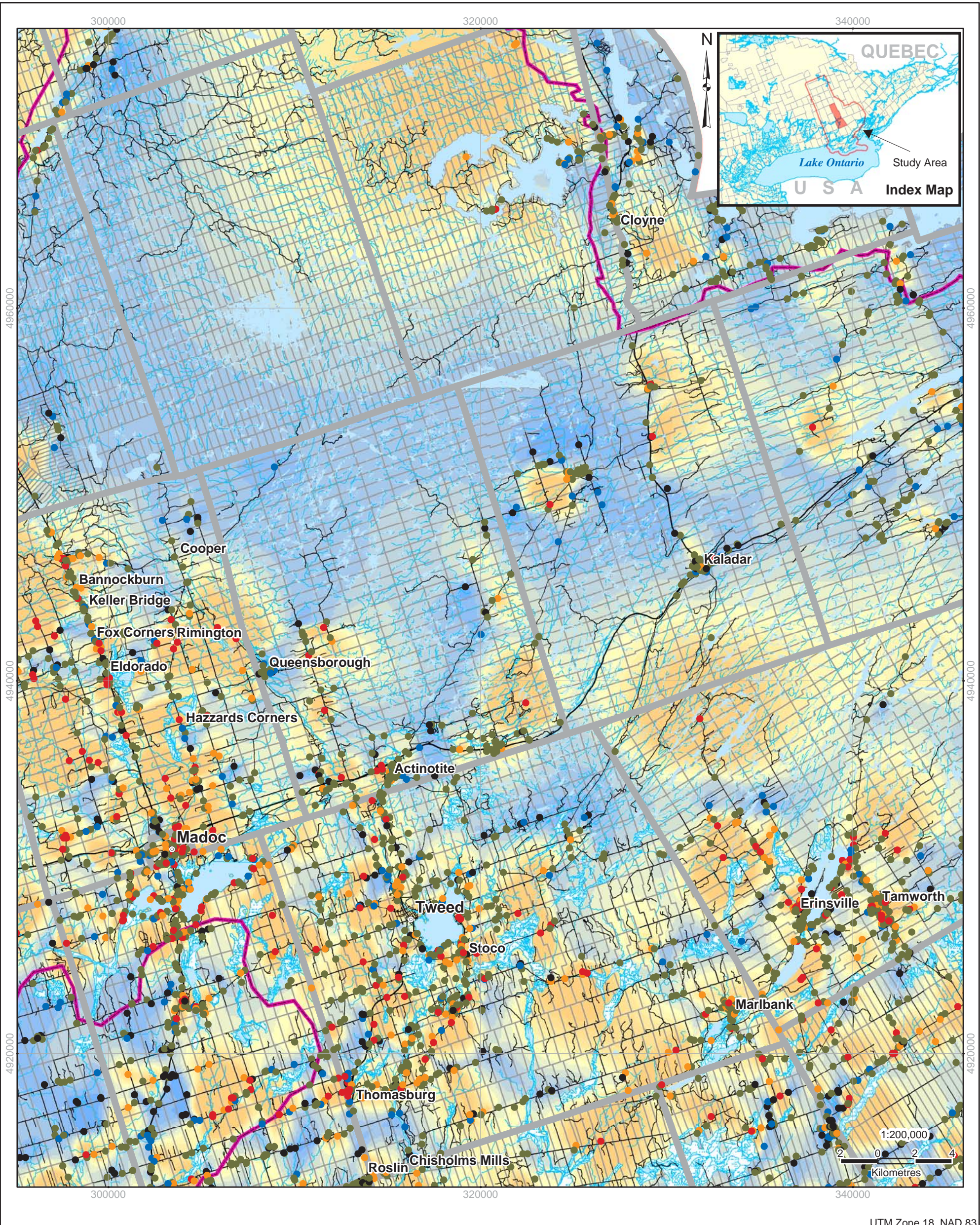
**Township of Stone Mills - Well Driller's Recommended Pumping Rate**  
**Quinte Regional Groundwater Study**

STN-3

G:\Projects\2003\031-119004\_Quinte\GIS\MXD\Township\_of\_StoneMills\_pump\_rates.mxd

UTM Zone 18, NAD 83





UTM Zone 18, NAD 83

Digital Mapping Sources:  
 Base Mapping Features - CANMAP v5.0,  
 MOE NRVIS data

Disclaimer: The information conveyed by this map is regional in nature and is not suitable for use in site specific evaluations. The map should only be interpreted in conjunction with the accompanying written report.

Map accuracy varies with location and decreases further away from well points

Date: August 2004 © 2004 Queen's Printer for Ontario

**Legend**

- ⊙ Major Population Centres
  - Communities
  - Expressways
  - Highways
  - Rivers
  - Lakes
  - Wetlands
  - Study Area Boundary
  - Quinte Conservation Watershed
  - Lots and Concessions
- Well Location and Pump Rates**
- < 1 igpm (<5 l/min)
  - 1 - 2 igpm (5 - 10 l/min)
  - 2 - 10 igpm (10 - 45 l/min)
  - 10 - 20 igpm (45 - 90 l/min)
  - >20 igpm (>90 l/min)
- Record Pumping Rate**
- > 10 igpm (> 45 l/min)
  - < 2 igpm (< 10 l/min)

in association with

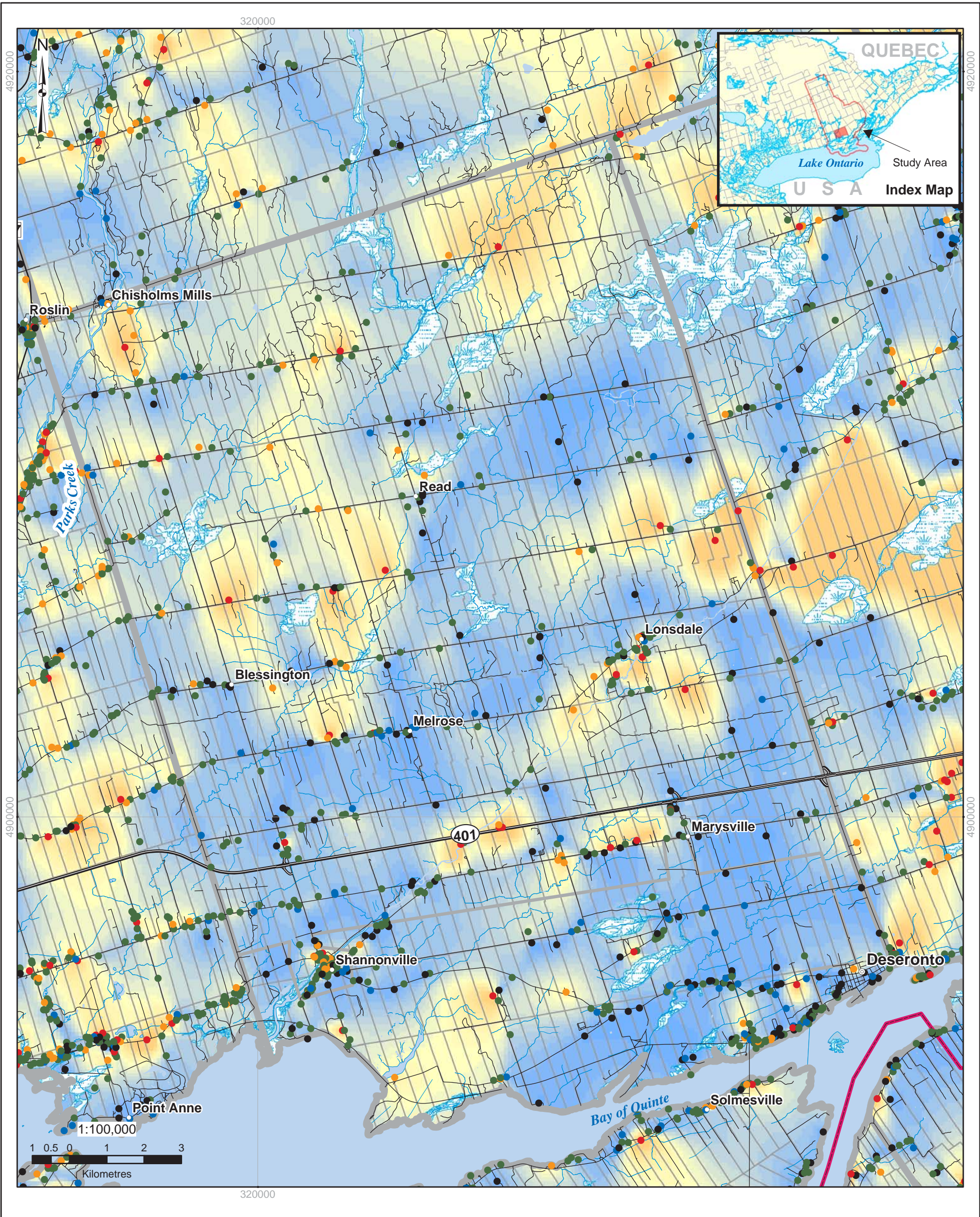
Agricultural Watersheds Associates

**Municipality of Tweed - Well Driller's Recommended Pumping Rate**  
**Quinte Regional Groundwater Study**

TWD-3

G:\Projects\2003\031-119004\_Quinte\GIS\MXDs\Municipality\_of\_Tweed\_pump\_rates.mxd





UTM Zone 18, NAD 83

Digital Mapping Sources:  
 Base Mapping Features - CANMAP v5.0,  
 MOE NRVIS data

Disclaimer: The information conveyed by this map is regional in nature and is not suitable for use in site specific evaluations. The map should only be interpreted in conjunction with the accompanying written report.

Map accuracy varies with location and decreases further away from well points

Date: August 2004 © 2004 Queen's Printer for Ontario

in association with  
 Agricultural Watersheds Associates

**Legend**

- ⊙ Major Population Centres
  - Communities
  - Expressways
  - Highways
  - Rivers
  - Lakes
  - First Nations
  - Lots and Concessions
  - Wetland Unit
  - Study Area Boundary
  - Quinte Conservation Watershed
- Well Location and Pump Rate**
- < 1 igpm (< 5 l/min)
  - 1 - 2 igpm (5 - 10 l/min)
  - 2 - 10 igpm (10 - 45 l/min)
  - 10 - 20 igpm (45 - 90 l/min)
  - > 20 igpm (> 90 l/min)
- Record Pumping Rate**
- > 10 igpm (> 45 l/min)
  - < 2 igpm (< 10 l/min)

**Township of Tyendinaga - Well Driller's Recommended Pumping Rate**  
**Quinte Regional Groundwater Study**

TYND-3

G:\Projects\2003\031-119004\_Quinte\GIS\MXDs\Township\_of\_Tyendinaga\_pump\_rates.mxd