

Digital Mapping Sources:
 Base Mapping Features - CANMAP v5.0,
 Prince Edward Municipal Mapping, MOE NRVIS data

Disclaimer: Only georeferenced data provided at the time of the report is shown. Both georeferenced and non-georeferenced data is in the digital database. The completeness and positional accuracy of the plotted data is variable. Some locations may appear in duplicate. The map should only be interpreted in conjunction with the accompanying written report.

Date: August 2004 © 2004 Queen's Printer for Ontario

Legend			
⊙	Major Population Centres	◆	Known Contaminated Sites
○	Communities	●	Landfill - Open
—	Expressways	●	Landfill - Closed
—	Highways	●	Transfer Station/Other
—	Counties	●	Waste Receivers
—	Municipalities	●	Hazardous Waste Generators
—	Study Area Boundary	●	Autowreckers/Recyclers
—	Quinte Conservation Watershed	●	Petroleum Fuel Storage: Private
—	Lakes	●	Petroleum Fuel Storage: Retail
		●	Coal Tar Sites
		●	Federal Contaminated Sites
		●	Reported Spills
		●	PCB Sites
		●	Pesticide Sites
		●	Sewage Treatment Plants
		●	Industry
		●	Municipal Survey Results
		●	Gas Station
		●	Industrial
		●	Landfill
		●	Salt and Sand Sheds/ Works Yard

Note: Data only shown primarily for Partner Municipalities.

in association with

Agricultural Watersheds Associates

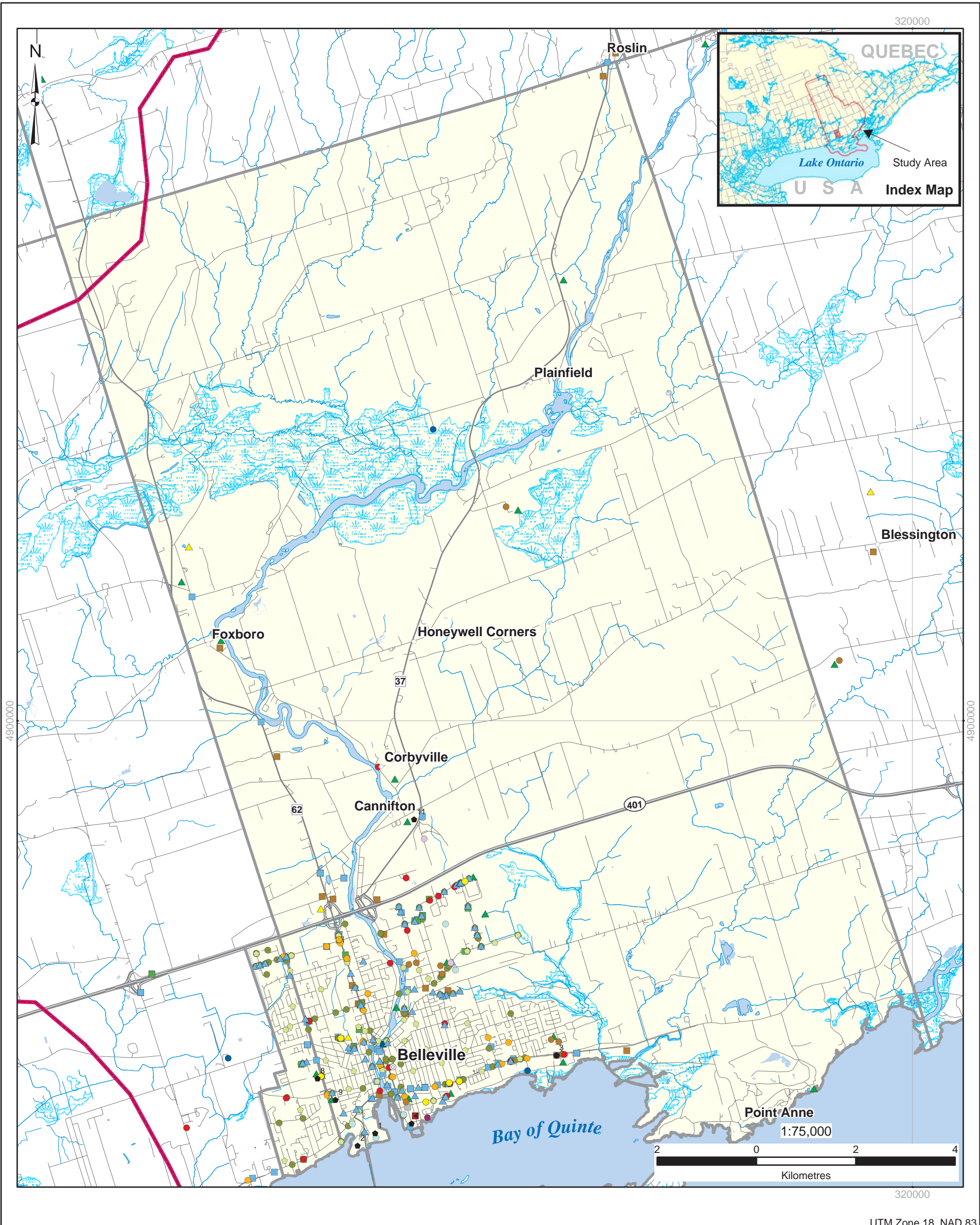
Town of Bancroft - Known and Potential Contaminant Sources

Quinte Regional Groundwater Study

BAN-4

G:\Projects\2003\031-119004_Quinte\GIS\MXDs\Town_of_Bancroft_waterable.mxd

UTM Zone 18, NAD 83



Digital Mapping Sources:
 Base Mapping Features - CANMAP v5.0,
 Prince Edward Municipal Mapping, MOE NRVIS data

Disclaimer: Only georeferenced data provided at the time of the report is shown. Both georeferenced and non-georeferenced data is in the digital database. The completeness and positional accuracy of the plotted data is variable. Some locations may appear in duplicate. The map should only be interpreted in conjunction with the accompanying written report.

Date: August 2004 © 2004 Queen's Printer for Ontario



Legend

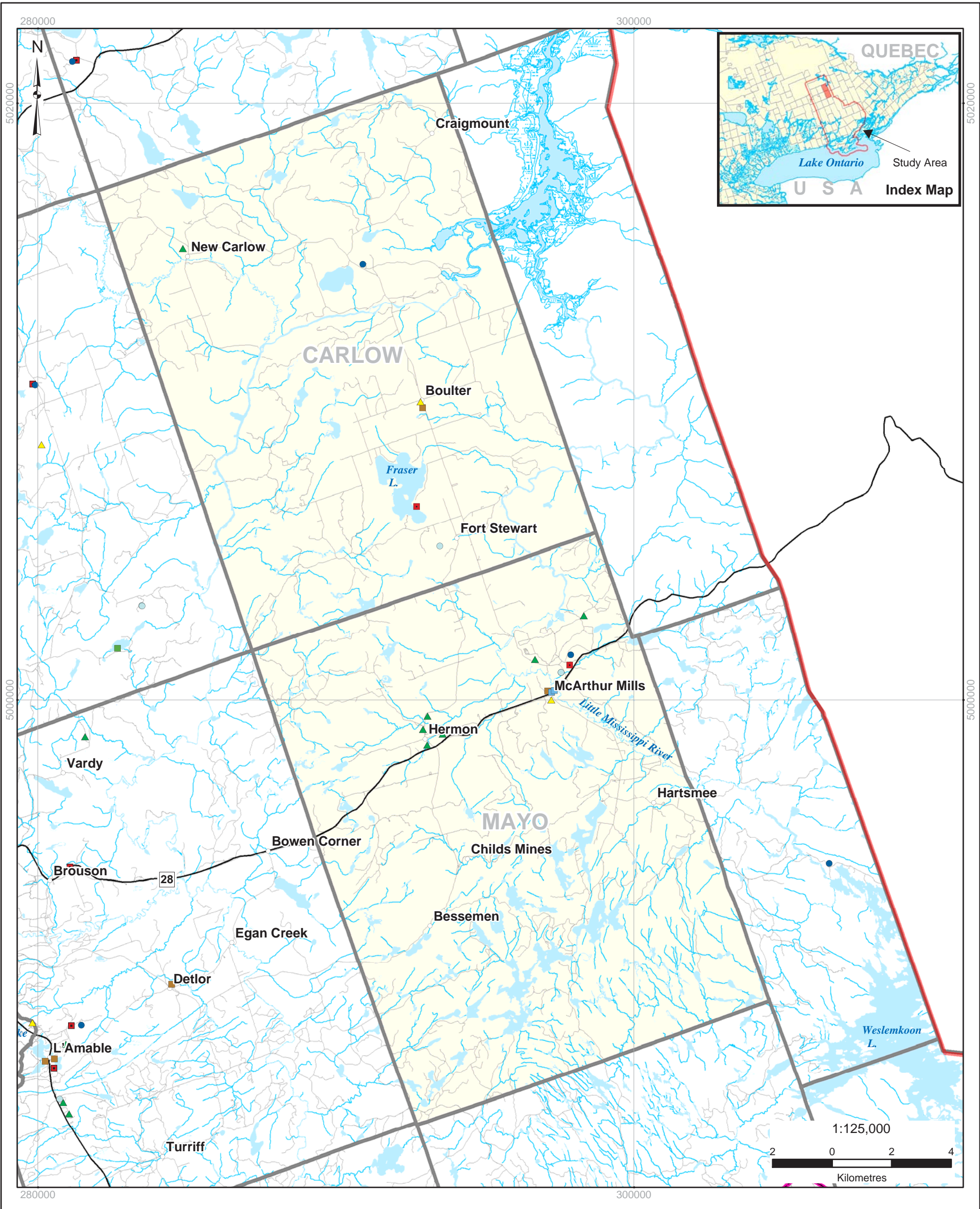
- ⊙ Major Population Centres
- Communities
- Expressways
- Highways
- Counties
- Municipalities
- Study Area Boundary
- ▭ Quinte Conservation Watershed
- ▭ Lakes
- ◆ Known Contaminated Sites
- Landfill - Open
- Landfill - Closed
- Transfer Station/Other
- Waste Receivers
- Hazardous Waste Generators
- Autowreckers/Recyclers
- Petroleum Fuel Storage: Private
- Petroleum Fuel Storage: Retail
- Coal Tar Sites
- Federal Contaminated Sites
- Reported Spills
- PCB Sites
- Pesticide Sites
- Sewage Treatment Plants
- ▲ Industry
- Municipal Survey Results
- Gas Station
- ▲ Industrial
- Landfill
- ▲ Salt and Sand Sheds

City of Belleville Known and Potential Contaminant Sources

Quinte Regional Groundwater Study

BEL-4

G:\Projects\2003\031-119004_Quinte\GIS\MXD\City_of_Belleville_pump_rates.mxd



UTM Zone 18, NAD 83

Digital Mapping Sources:
 Base Mapping Features - CANMAP v5.0,
 Prince Edward Municipal Mapping, MOE NRVIS data

Disclaimer: Only georeferenced data provided at the time of the report is shown. Both georeferenced and non-georeferenced data is in the digital database. The completeness and positional accuracy of the plotted data is variable. Some locations may appear in duplicate. The map should only be interpreted in conjunction with the accompanying written report.

Date: August 2004 © 2004 Queen's Printer for Ontario

Legend

- | | | | |
|---|--|--|--|
| <ul style="list-style-type: none"> ⊙ Major Population Centres ○ Communities — Expressways — Highways — Counties — Municipalities — Study Area Boundary ▭ Quinte Conservation Watershed ▭ Lakes | <ul style="list-style-type: none"> ◆ Known Contaminated Sites ● Landfill - Open ● Landfill - Closed ● Transfer Station/Other ● Waste Receivers ● Hazardous Waste Generators ● Autowreckers/Recyclers ■ Petroleum Fuel Storage: Private | <ul style="list-style-type: none"> ■ Petroleum Fuel Storage: Retail ■ Coal Tar Sites ■ Federal Contaminated Sites ● Reported Spills ● PCB Sites ● Pesticide Sites ● Sewage Treatment Plants ▲ Industry | <ul style="list-style-type: none"> ■ Municipal Survey Results ■ Gas Station ▲ Industrial ■ Landfill ▲ Salt and Sand Sheds/ Works Yard |
|---|--|--|--|

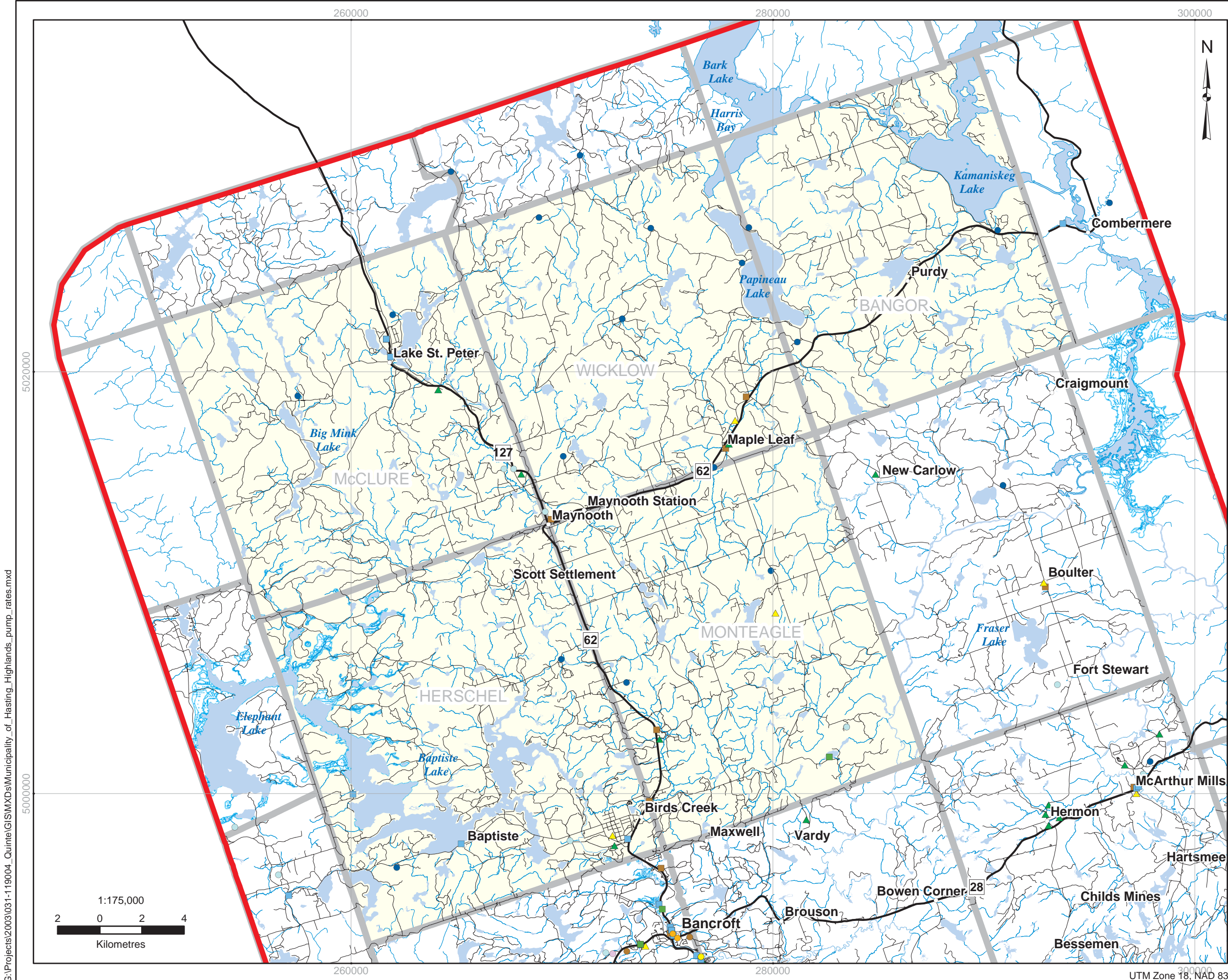
Note: Data only shown primarily for Partner Municipalities.



Township of Carlow & Mayo Known & Potential Contaminant Sources
Quinte Regional Groundwater Study

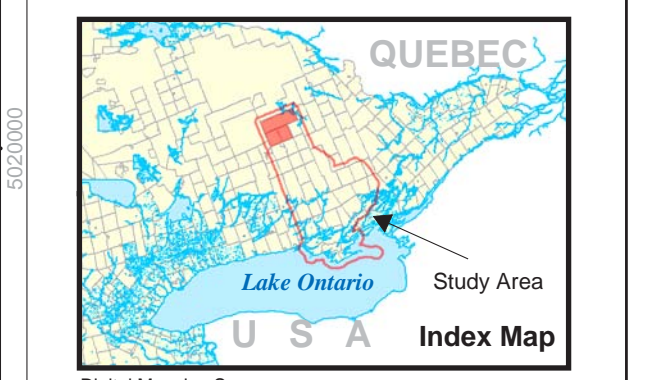
CAR-4

G:\Projects\2003\031-119004_Quinte\GIS\MXDs\Township_of_Carlow_Mayo_waterable.mxd



Legend

⊙ Major Population Centres	● Reported Spills
○ Communities	● PCB Sites
— Expressways	● Pesticide Sites
— Highways	● Sewage Treatment Plants
— Rivers	▲ Industry
— Lakes	— Municipal Survey Results
— Wetlands	■ Gas Station
— Quinte Conservation Area	▲ Industrial
— Study Area Boundary	■ Landfill
● Known Contaminated Sites	▲ Salt and Sand Sheds/ Works Yard
● Landfill - Open	
● Landfill - Closed	
● Transfer Station/Other	
● Waste Receivers	
● Hazardous Waste Generators	
● Autowreckers/Recyclers	
■ Petroleum Fuel Storage: Private	
■ Petroleum Fuel Storage: Retail	
■ Coal Tar Sites	
■ Federal Contaminated Sites	



Digital Mapping Sources:
 Base Mapping Features - CANMAP v5.0,
 Prince Edward Municipal Mapping, MOE NRVIS data

Disclaimer: Only georeferenced data provided at the time of the report is shown. Both georeferenced and non-georeferenced data is in the digital database. The completeness and positional accuracy of the plotted data is variable. Some locations may appear in duplicate. The map should only be interpreted in conjunction with the accompanying written report.

Date: August 2004 © 2004 Queen's Printer for Ontario

DILLON CONSULTING

in association with

Lissom
EARTH SCIENCES

Golden Associates

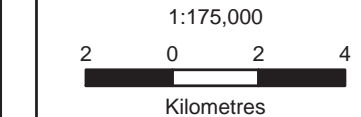
Agricultural Watersheds Associates

Anley
Soils, Water, Environment & Planning

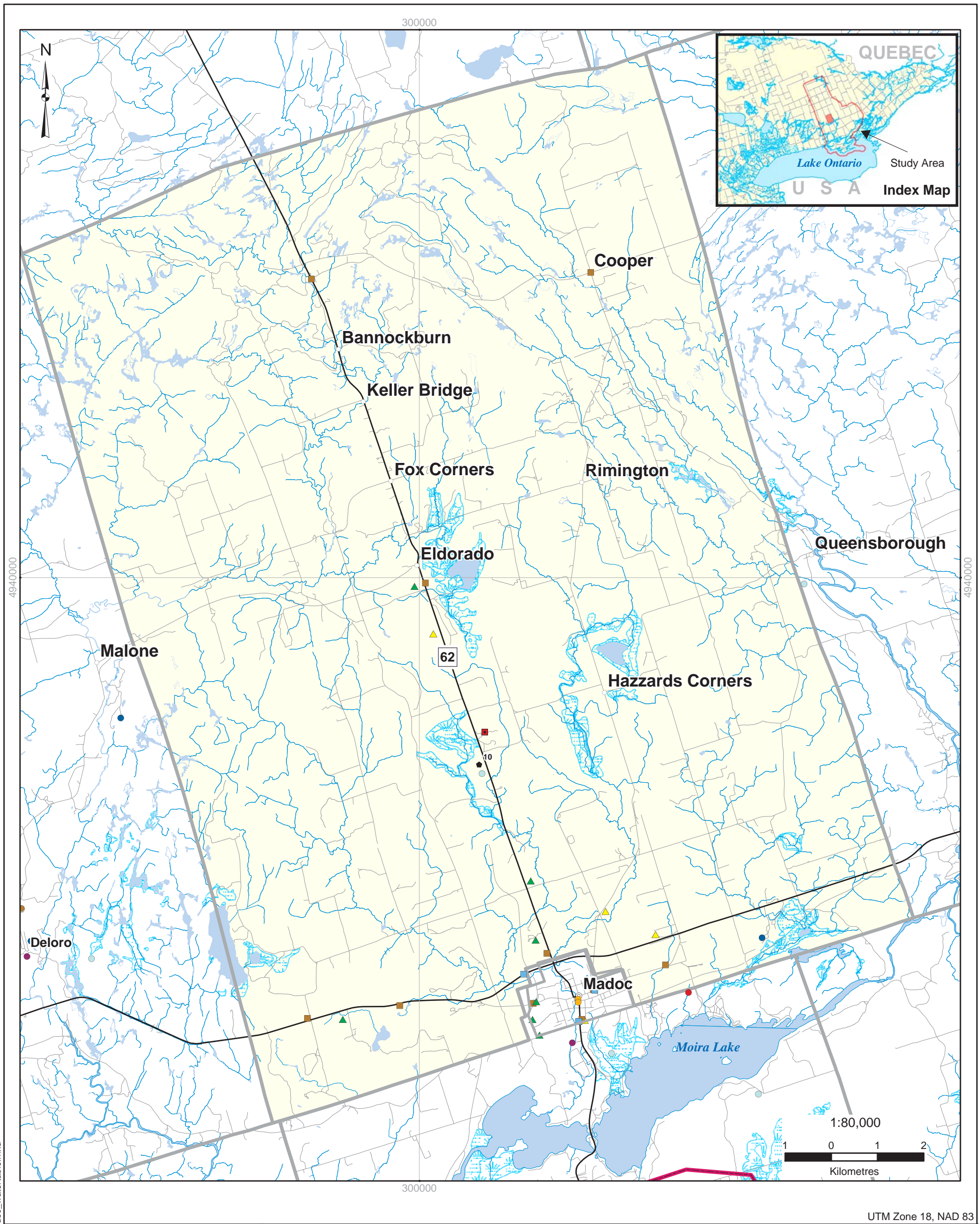
HAST-4: Municipality of Hastings Highlands - Known and Potential Contaminant Sources

Quinte Regional Groundwater Study

C:\Projects\2003\031-119004_Quinte\GIS\MXDs\Municipality_of_Hastings_Highlands_pump_rates.mxd



UTM Zone 18, NAD 83



Digital Mapping Sources:
 Base Mapping Features - CANMAP v5.0,
 Prince Edward Municipal Mapping, MOE NRVIS data

Disclaimer: Only georeferenced data provided at the time of the report is shown. Both georeferenced and non-georeferenced data is in the digital database. The completeness and positional accuracy of the plotted data is variable. Some locations may appear in duplicate. The map should only be interpreted in conjunction with the accompanying written report.

Date: August 2004 © 2004 Queen's Printer for Ontario



Legend

- | | | | |
|---|--|--|--|
| <ul style="list-style-type: none"> ⊙ Major Population Centres ○ Communities — Expressways — Highways — Counties — Municipalities — Study Area Boundary ▭ Quinte Conservation Watershed ▭ Lakes | <ul style="list-style-type: none"> ● Known Contaminated Sites ● Landfill - Open ● Landfill - Closed ● Transfer Station/Other ● Waste Receivers ● Hazardous Waste Generators ● Autowreckers/Recyclers ● Petroleum Fuel Storage: Private | <ul style="list-style-type: none"> ▭ Petroleum Fuel Storage: Retail ▭ Coal Tar Sites ▭ Federal Contaminated Sites ● Reported Spills ● PCB Sites ● Pesticide Sites ● Sewage Treatment Plants ▲ Industry | <ul style="list-style-type: none"> ▭ Municipal Survey Results ● Gas Station ▲ Industrial ▭ Landfill ▲ Salt and Sand Sheds/ Works Yard |
|---|--|--|--|

Note: Data only shown primarily for Partner Municipalities.

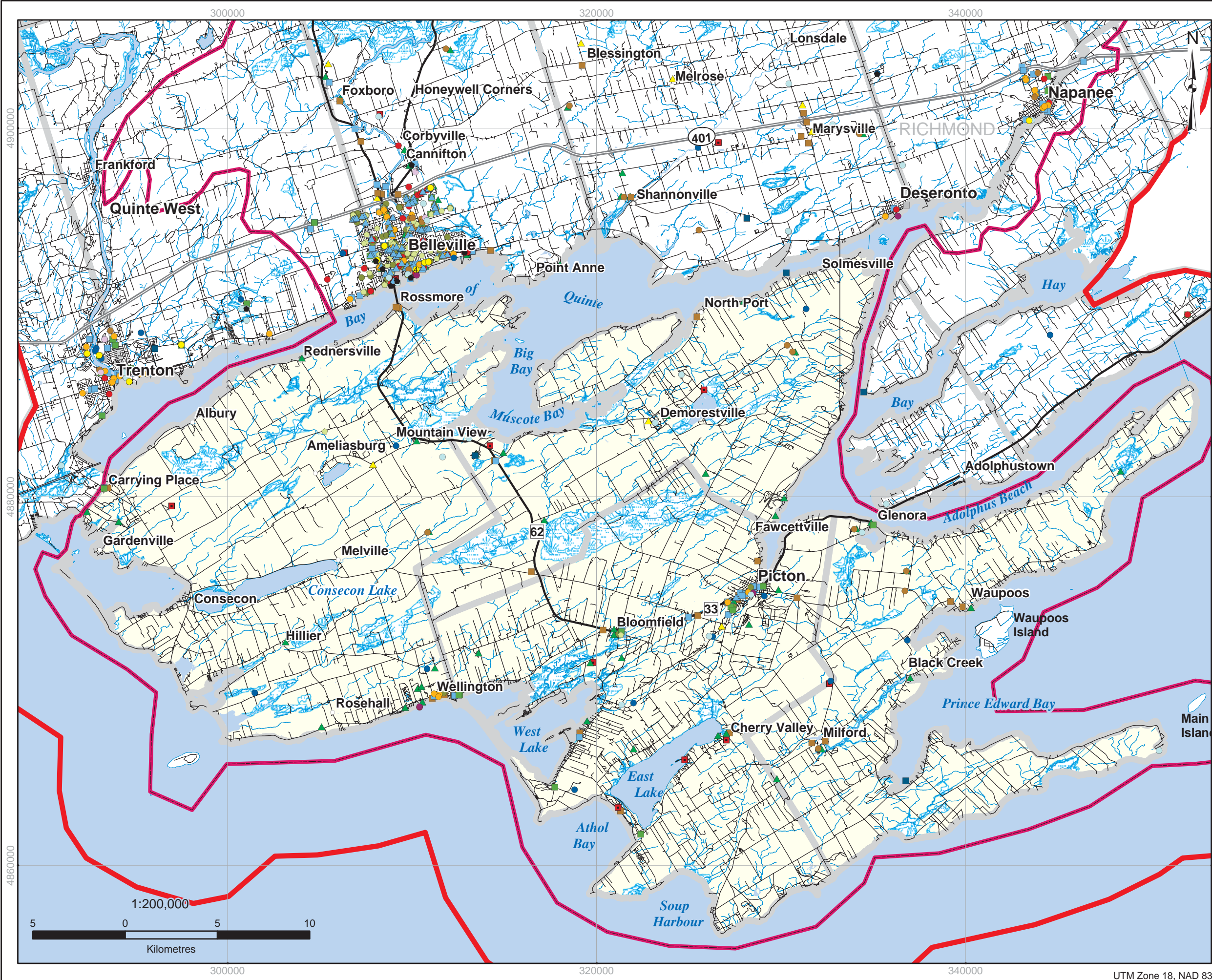
Township of Madoc - Known and Potential Contaminant Sources

Quinte Regional Groundwater Study

MAD-4

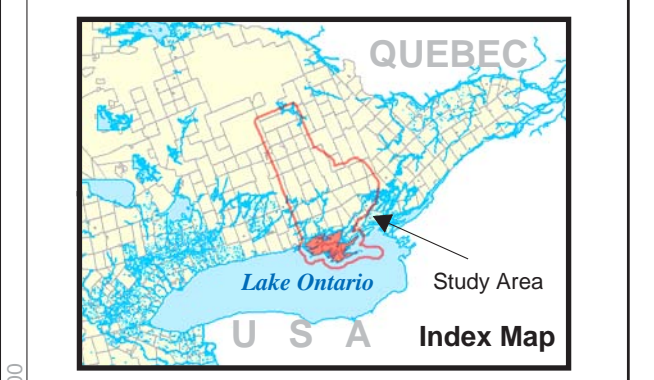
G:\Projects\2003\031-119004_Quinte\GIS\MXDs\Township_of_Madoc_waterable.mxd

C:\Projects\2003\031-119004_Quinte\GIS\MXDs\County_Prince_Edward_pumping_rates.mxd



Legend

⊙ Major Population Centres	● Reported Spills
○ Communities	● PCB Sites
— Expressways	● Pesticide Sites
— Highways	● Sewage Treatment Plants
— Rivers	▲ Industry
— Lakes	— Municipal Survey Results
— Wetland Unit	■ Gas Station
— Quinte Conservation Area	▲ Industrial
— Study Area Boundary	■ Landfill
● Known Contaminated Sites	▲ Salt and Sand Sheds/ Works Yard
● Landfill - Open	
● Landfill - Closed	
● Transfer Station/Other	
● Waste Receivers	
● Hazardous Waste Generators	
● Autowreckers/Recyclers	
● Petroleum Fuel Storage: Private	
● Petroleum Fuel Storage: Retail	
● Coal Tar Sites	
● Federal Contaminated Sites	



Digital Mapping Sources:
Base Mapping Features - CANMAP v5.0,
Prince Edward Municipal Mapping, MOE NRVIS data

Disclaimer: Only georeferenced data provided at the time of the report is shown. Both georeferenced and non-georeferenced data is in the digital database. The completeness and positional accuracy of the plotted data is variable. Some locations may appear in duplicate. The map should only be interpreted in conjunction with the accompanying written report.

Date: August 2004 ©2004 Queen's Printer for Ontario

DILLON CONSULTING

in association with

Lissom
EARTH SCIENCES

Golden Associates

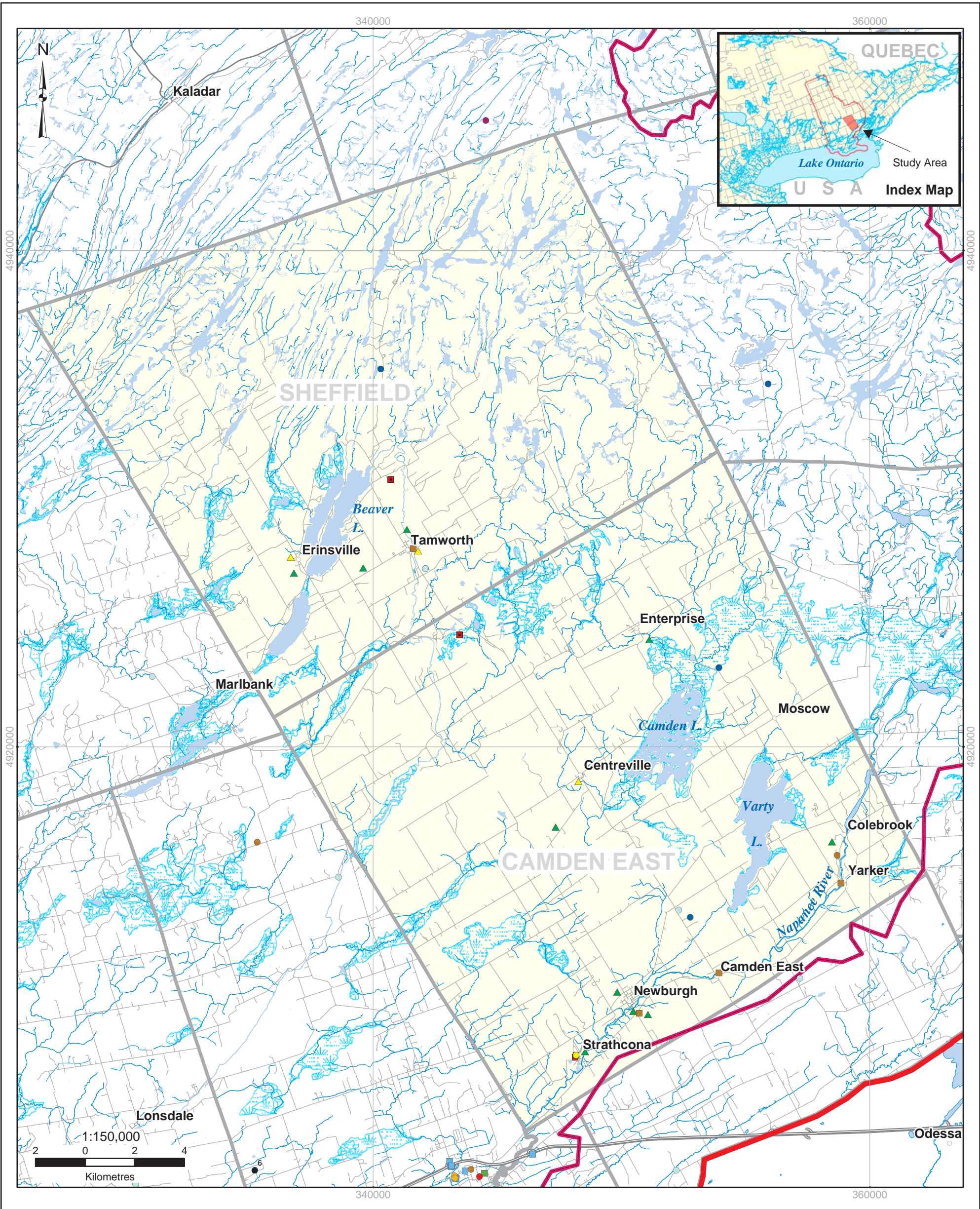
Agricultural Watersheds Associates

Anley
EARTH SCIENCES & CONSULTING

PEC-4: County of Prince Edward - Known and Potential Contaminant Sources

Quinte Regional Groundwater Study

UTM Zone 18, NAD 83



UTM Zone 18, NAD 83

Digital Mapping Sources:
 Base Mapping Features - CANMAP v5.0,
 Prince Edward Municipal Mapping, MOE NRVIS data

Disclaimer: Only georeferenced data provided at the time of the report is shown. Both georeferenced and non-georeferenced data is in the digital database. The completeness and positional accuracy of the plotted data is variable. Some locations may appear in duplicate. The map should only be interpreted in conjunction with the accompanying written report.

Date: August 2004 © 2004 Queen's Printer for Ontario

Legend

- | | | | |
|---------------------------------|------------------------------|-----------------------------------|--------------------------------------|
| ⊙ Major Population Centres | ◆ Known Contaminated Sites | ■ Petroleum Fuel Storage: Retail | ■ Municipal Survey Results |
| ○ Communities | ● Landfill - Open | ■ Coal Tar Sites | ■ Gas Station |
| — Expressways | ● Landfill - Closed | ■ Federal Contaminated Sites | ▲ Industrial |
| — Highways | ● Transfer Station/Other | ■ Reported Spills | ■ Landfill |
| — Counties | ● Waste Receivers | ● Pesticide Sites | ▲ Salt and Sand Sheds/
Works Yard |
| — Municipalities | ● Hazardous Waste Generators | ● Sewage Treatment Plants | |
| — Study Area Boundary | ● Autowreckers/Recyclers | ● Petroleum Fuel Storage: Private | |
| ■ Quinte Conservation Watershed | ■ Lakes | | |

Note: Data only shown primarily for Partner Municipalities.

in association with

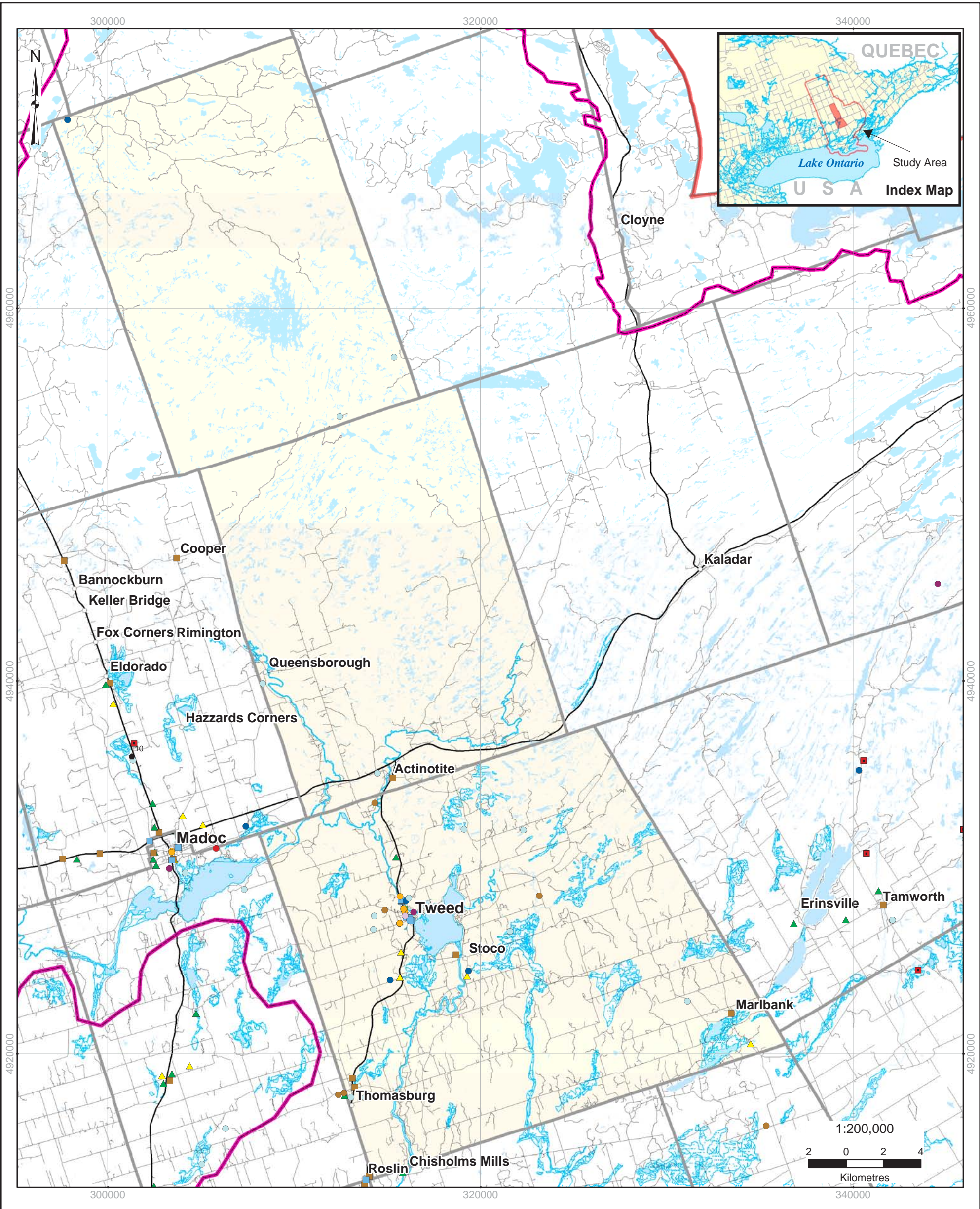
Agricultural Watersheds Associates

Township of Stone Mills - Known and Potential Contaminant Sources

Quinte Regional Groundwater Study

STN-4

G:\Projects\2003\031-119004_Quinte\GIS\MXDs\Township_of_StoneMills_watertable.mxd



UTM Zone 18, NAD 83

Digital Mapping Sources:
 Base Mapping Features - CANMAP v5.0,
 Prince Edward Municipal Mapping, MOE NRVIS data

Disclaimer: Only georeferenced data provided at the time of the report is shown. Both georeferenced and non-georeferenced data is in the digital database. The completeness and positional accuracy of the plotted data is variable. Some locations may appear in duplicate. The map should only be interpreted in conjunction with the accompanying written report.

Date: August 2004 © 2004 Queen's Printer for Ontario

Legend

- | | | | |
|---------------------------------|-----------------------------------|----------------------------------|--------------------------------------|
| ○ Major Population Centres | ◆ Known Contaminated Sites | ■ Petroleum Fuel Storage: Retail | ■ Municipal Survey Results |
| ○ Communities | ● Landfill - Open | ■ Coal Tar Sites | ■ Gas Station |
| — Expressways | ● Landfill - Closed | ■ Federal Contaminated Sites | ▲ Industrial |
| — Highways | ● Transfer Station/Other | ■ Reported Spills | ■ Landfill |
| — Counties | ● Waste Receivers | ● Pesticide Sites | ▲ Salt and Sand Sheds/
Works Yard |
| — Municipalities | ● Hazardous Waste Generators | ● Sewage Treatment Plants | |
| — Study Area Boundary | ● Autowreckers/Recyclers | ▲ Industry | |
| — Quinte Conservation Watershed | ■ Petroleum Fuel Storage: Private | | |
| ■ Lakes | | | |

Note: Data only shown primarily for Partner Municipalities.



Municipality of Tweed - Known and Potential Contaminant Sources
Quinte Regional Groundwater Study

TWD-4

G:\Projects\2003\031-119004_Quinte\GIS\MXDs\Municipality_of_Tweed_waterable.mxd



UTM Zone 18, NAD 83

Digital Mapping Sources:
 Base Mapping Features - CANMAP v5.0,
 Prince Edward Municipal Mapping, MOE NRVIS data

Disclaimer: Only georeferenced data provided at the time of the report is shown. Both georeferenced and non-georeferenced data is in the digital database. The completeness and positional accuracy of the plotted data is variable. Some locations may appear in duplicate. The map should only be interpreted in conjunction with the accompanying written report.

Date: August 2004 © 2004 Queen's Printer for Ontario

Legend

- | | | | |
|---|--|--|--|
| <ul style="list-style-type: none"> ⊙ Major Population Centres ○ Communities — Expressways — Highways — Counties — Municipalities — Study Area Boundary ▭ Quinte Conservation Watershed ▭ Lakes | <ul style="list-style-type: none"> ● Known Contaminated Sites ● Landfill - Open ● Landfill - Closed ● Transfer Station/Other ● Waste Receivers ● Hazardous Waste Generators ● Autowreckers/Recyclers ● Petroleum Fuel Storage: Private | <ul style="list-style-type: none"> ■ Petroleum Fuel Storage: Retail ■ Coal Tar Sites ■ Federal Contaminated Sites ■ Reported Spills ● PCB Sites ● Pesticide Sites ● Sewage Treatment Plants ▲ Industry | <ul style="list-style-type: none"> ■ Municipal Survey Results ■ Gas Station ▲ Industrial ■ Landfill ▲ Salt and Sand Sheds/ Works Yard |
|---|--|--|--|

Note: Data only shown primarily for Partner Municipalities.



Township of Tyendinaga - Known and Potential Contaminant Sources
Quinte Regional Groundwater Study

TYND-4

G:\Projects\2003\031-119004_Quinte\GIS\MXDs\Township_of_Tyendinaga_waterable.mxd