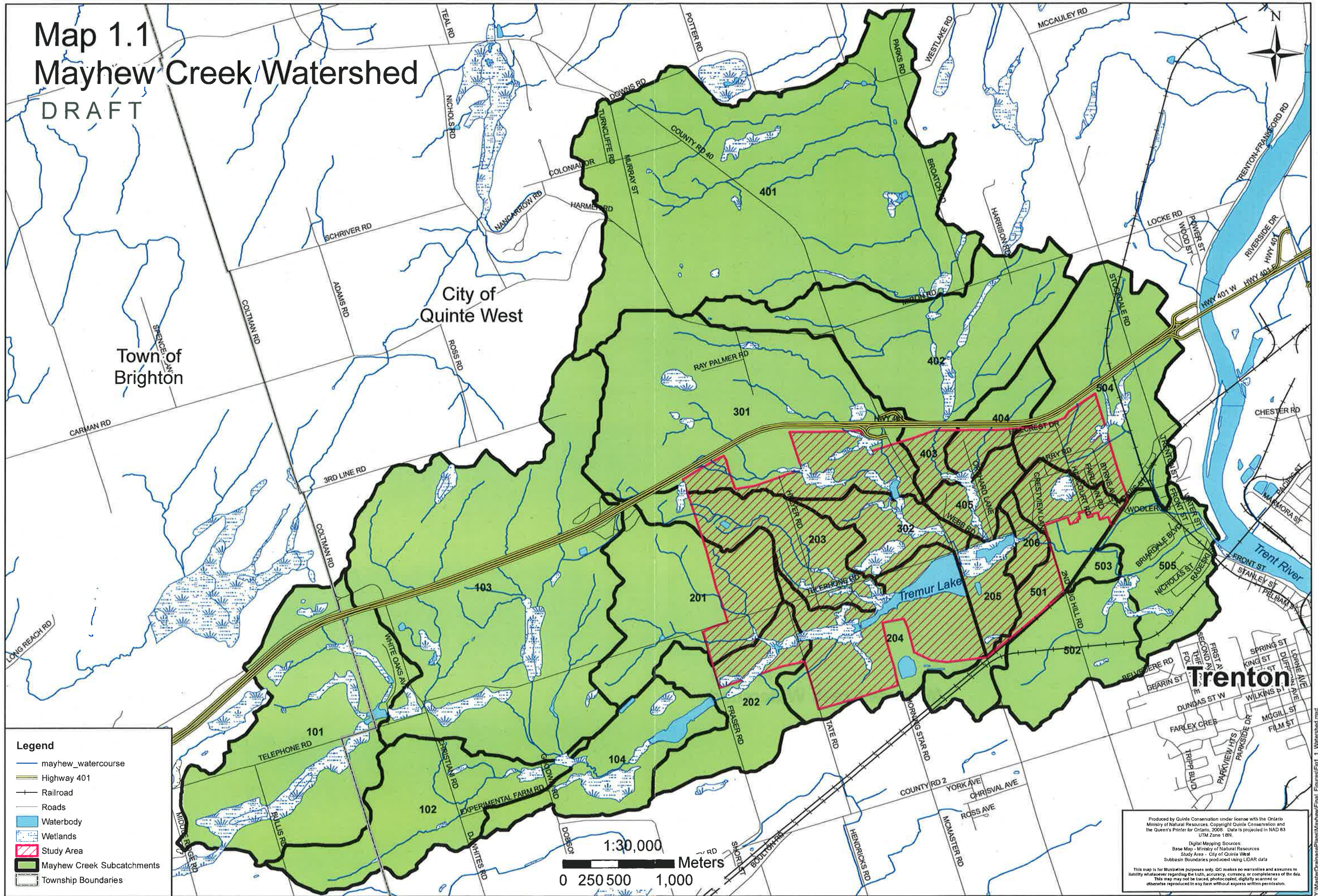


Map 1.1 Mayhew Creek Watershed DRAFT



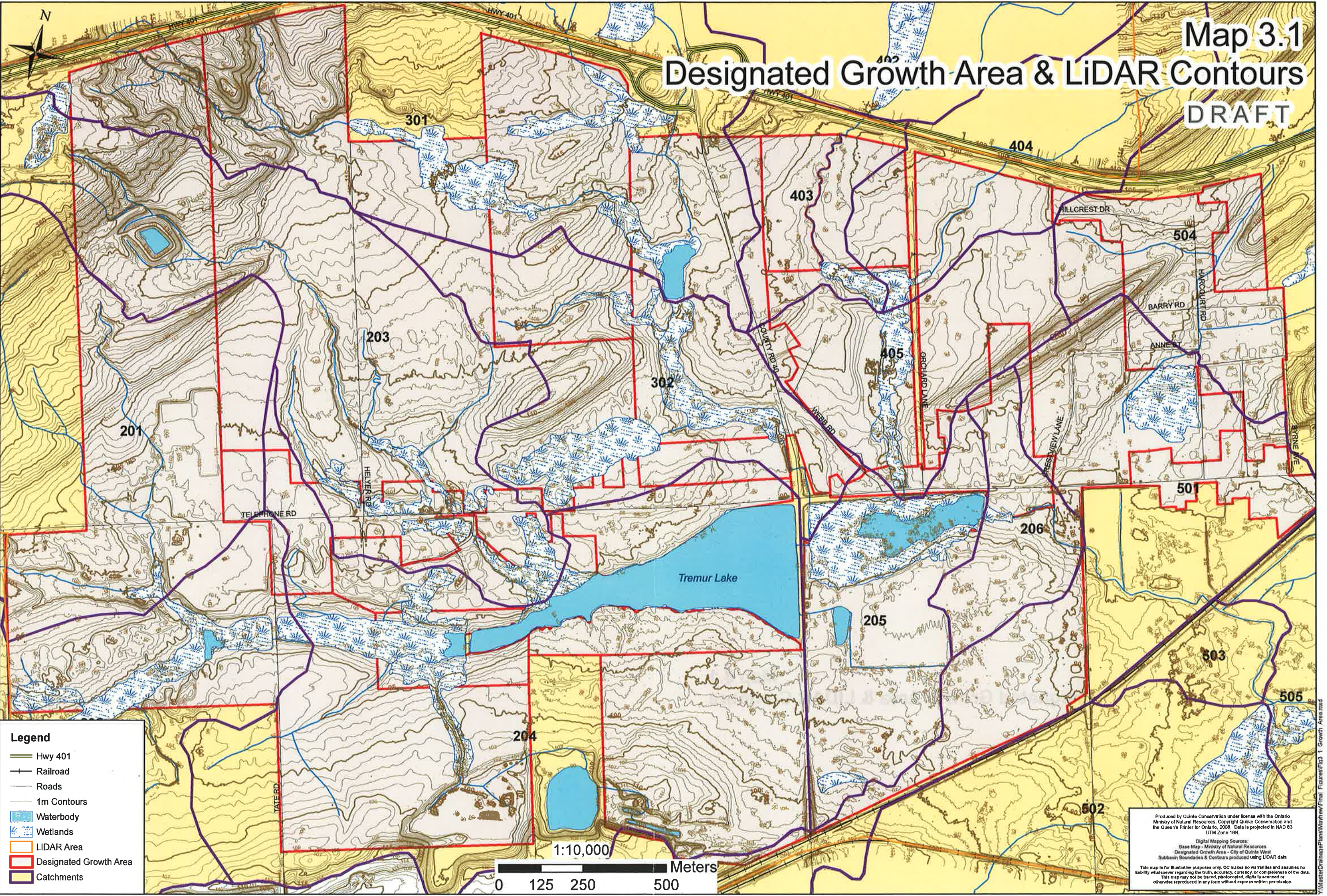
- Legend**
- mayhew_watercourse
 - Highway 401
 - Railroad
 - Roads
 - Waterbody
 - ▨ Wetlands
 - ▨ Study Area
 - Mayhew Creek Subcatchments
 - Township Boundaries

1:30,000
0 250 500 1,000 Meters

Produced by Quinte Conservation under license with the Ontario Ministry of Natural Resources. Copyright Quinte Conservation and the Queen's Printer for Ontario, 2008. Data is projected in NAD 83 UTM Zone 18N.
Digital Mapping Sources:
Base Map - Ministry of Natural Resources
Study Area - City of Quinte West
Subbasin Boundaries produced using LIDAR data
This map is for illustrative purposes only. QC makes no warranties and assumes no liability whatsoever regarding the truth, accuracy, currency, or completeness of the data. This map may not be traced, photocopied, digitally scanned or otherwise reproduced in any form without express written permission.

V:\WatershedChangePlans\Mayhew\Final_Figures\Fig_1_1_Watershed.mxd

Map 3.1 Designated Growth Area & LiDAR Contours DRAFT



- Legend**
- Hwy 401
 - Railroad
 - Roads
 - 1m Contours
 - Waterbody
 - Wetlands
 - LiDAR Area
 - Designated Growth Area
 - Catchments

Produced by Quinc Conservation under license with the Ontario Ministry of Natural Resources. Copyright Quinc Conservation and the Queen's Printer for Ontario, 2006. Data is projected in NAD 83 UTM Zone 18N.

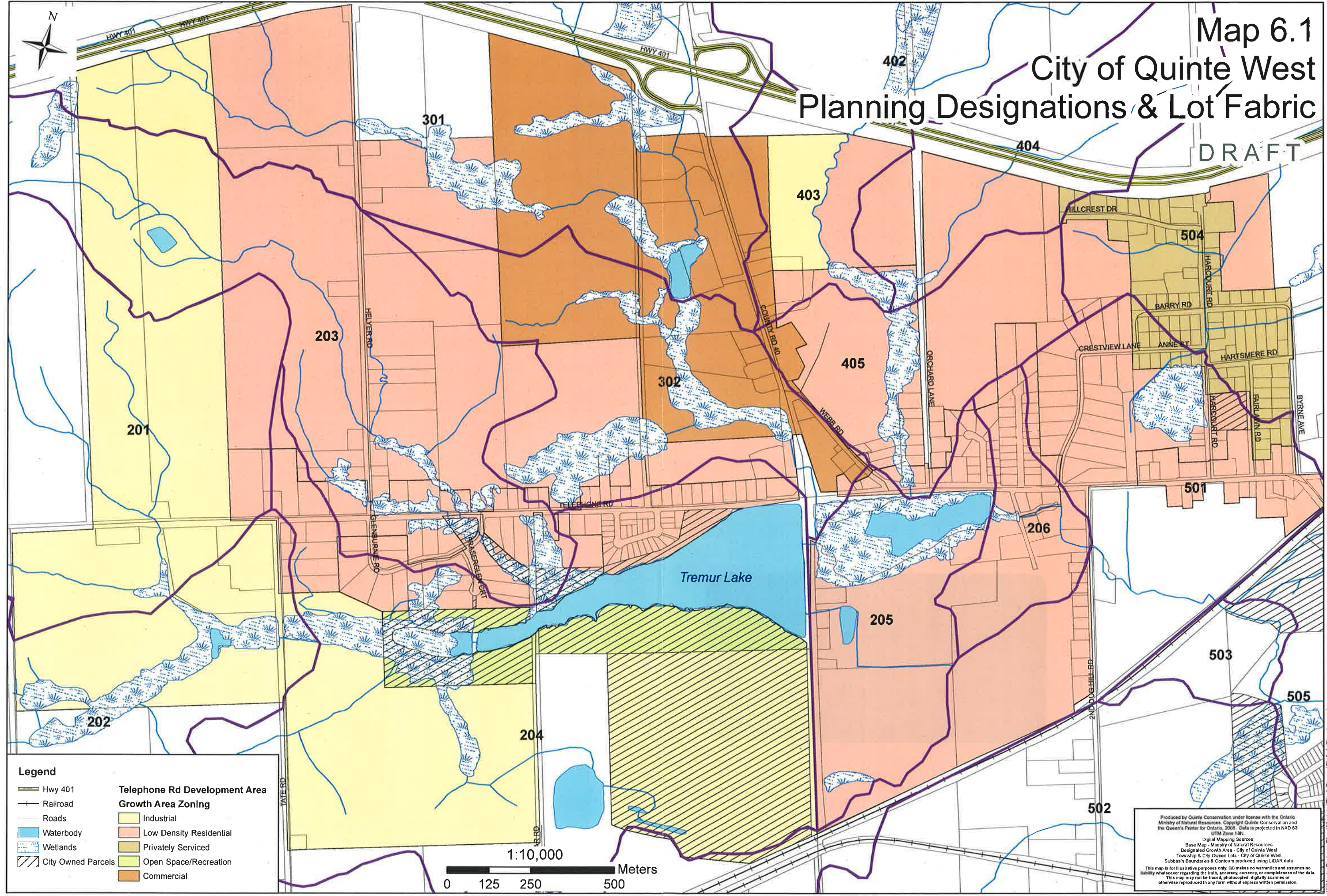
Digital Mapping Sources:
 Base Map - Ministry of Natural Resources
 Designated Growth Area - City of Quinc West
 Subbasin Boundaries & Contours produced using LiDAR data

This map is for illustrative purposes only. QC makes no warranties and assumes no liability whatsoever regarding the truth, accuracy, currency, or completeness of the data. This map may not be traced, photocopied, digitally scanned or otherwise reproduced in any form without express written permission.

Y:\Master\Ordnance\Plans\MainView\Figures\Fig 3.1 Growth Area.mxd

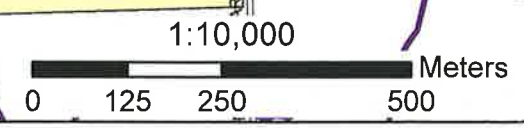
City of Quinte West Planning Designations & Lot Fabric

DRAFT



Legend

	Hwy 401		Telephone Rd Development Area
	Railroad		Growth Area Zoning
	Roads		Industrial
	Waterbody		Low Density Residential
	Wetlands		Privately Served
	City Owned Parcels		Open Space/Recreation
			Commercial



Produced by Quinte Conservation under license with the Ontario Ministry of Natural Resources. Copyright Quinte Conservation and the Queen's Printer for Ontario, 2008. Data is projected in NAD 83 UTM Zone 18N.

Digital Mapping Sources:
 Base Map - Ministry of Natural Resources
 Designated Growth Area - City of Quinte West
 Township & City Owned Lots - City of Quinte West
 Subbasin Boundaries & Contours produced using LIDAR data

This map is for illustrative purposes only. QC makes no warranties and assumes no liability whatsoever regarding the truth, accuracy, currency, or completeness of the data. This map may not be traced, photocopied, digitally scanned or otherwise reproduced in any form without express written permission.

Map 7.1 Hydrological Soils DRAFT

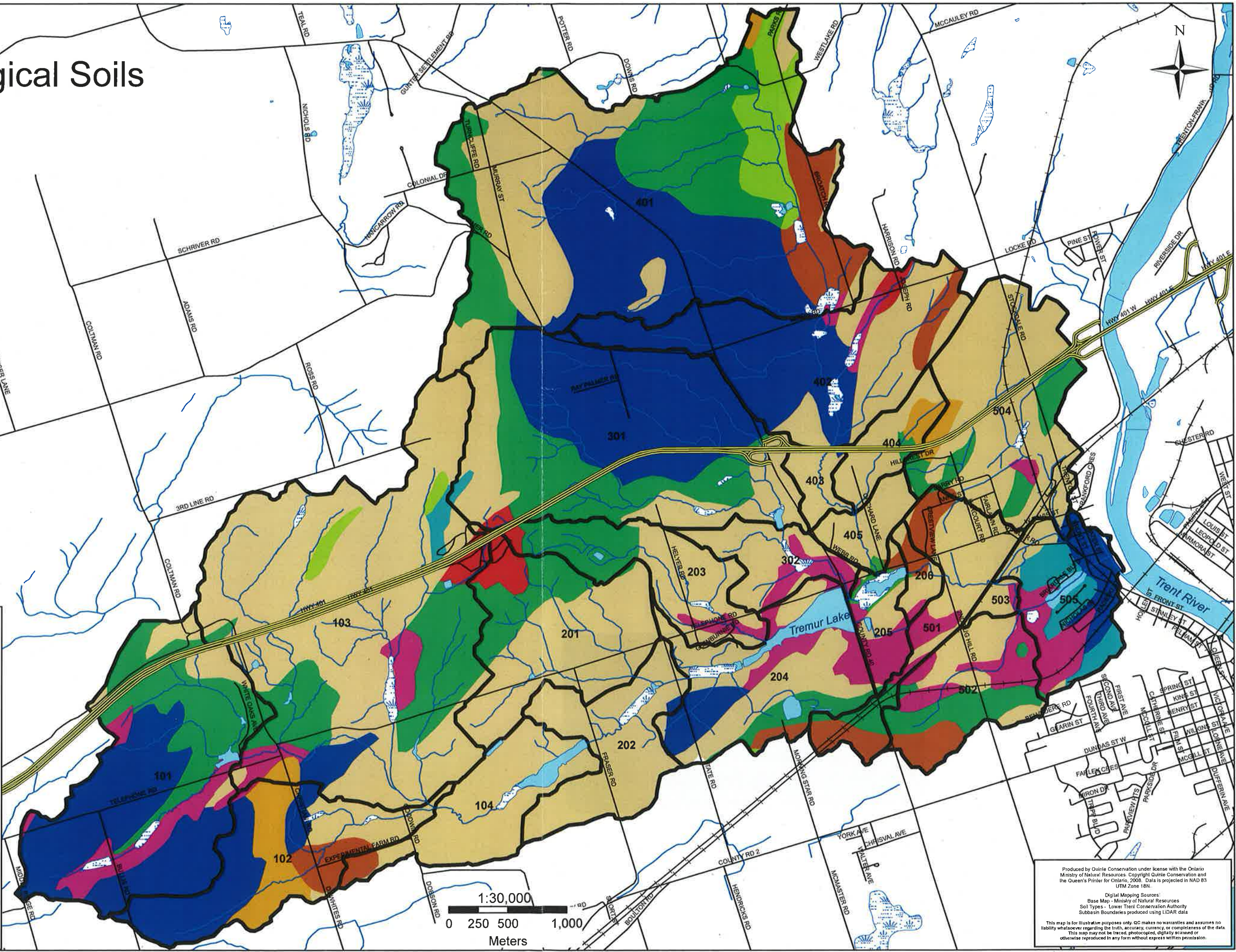


Legend

- Highway 401
- Roads
- Railroad
- Watercourse
- Waterbody
- Wetland
- Mayhew Creek Catchments

Soil Type

- LOAM
- SANDY LOAM
- GRAVELLY SAND
- LOAM
- MARSH
- MUCK
- SAND
- SANDY LOAM
- SILT LOAM
- SILTY CLAY LOAM
- WATER



Produced by Quirle Conservation under license with the Ontario Ministry of Natural Resources. Copyright Quirle Conservation and the Queen's Printer for Ontario, 2008. Data is projected in NAD 83 UTM Zone 18N.

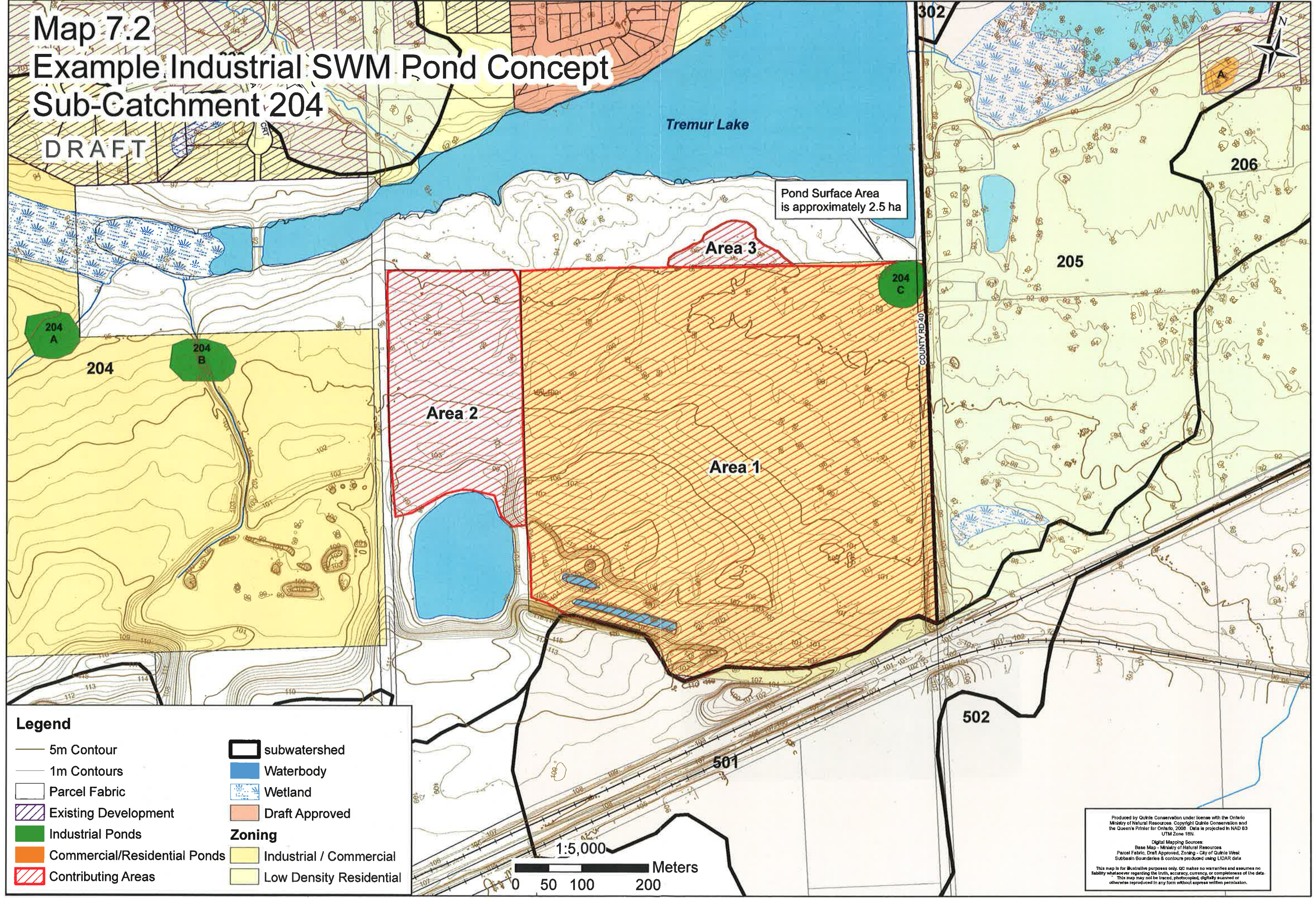
Digital Mapping Sources:
 Base Map - Ministry of Natural Resources
 Soil Types - Lower Trent Conservation Authority
 Subbasin Boundaries produced using LIDAR data

This map is for illustrative purposes only. QC makes no warranties and assumes no liability whatsoever regarding the truth, accuracy, currency, or completeness of the data. This map may not be traced, photocopied, digitally scanned or otherwise reproduced in any form without express written permission.

Y:\Master\DrainagePlans\Mayhew\Final_Figures\Fig_7_1_SoilTypes.mxd

Map 7.2 Example Industrial SWM Pond Concept Sub-Catchment 204

DRAFT



Pond Surface Area is approximately 2.5 ha

Legend

	5m Contour		subwatershed
	1m Contours		Waterbody
	Parcel Fabric		Wetland
	Existing Development		Draft Approved
	Industrial Ponds	Zoning	
	Commercial/Residential Ponds		Industrial / Commercial
	Contributing Areas		Low Density Residential

Produced by Quinte Conservation under license with the Ontario Ministry of Natural Resources. Copyright Quinte Conservation and the Queen's Printer for Ontario, 2008. Data is projected in NAD 83 UTM Zone 18N.

Digital Mapping Sources:
Base Map - Ministry of Natural Resources
Parcel Fabric, Draft Approved, Zoning - City of Quinte West
Subbasin Boundaries & contours produced using LIDAR data

This map is for illustrative purposes only. QC makes no warranties and assumes no liability whatsoever regarding the truth, accuracy, currency, or completeness of the data. This map may not be traced, photocopied, digitally scanned or otherwise reproduced in any form without express written permission.

Map 7.3 Example Residential/Commercial SWM Pond Concept Sub-Catchment 405



DRAFT

Legend

- Highway 401
- 5m Contour
- 1m Contour
- Parcel Fabric
- Existing Development

Pond Location

- Industrial/Commercial
- Low Density Residential
- subwatershed
- Waterbody
- Wetlands
- Draft Approved

Zoning

- Industrial / Commercial
- Low Density Residential

Pond Surface Area is approximately 0.35 ha



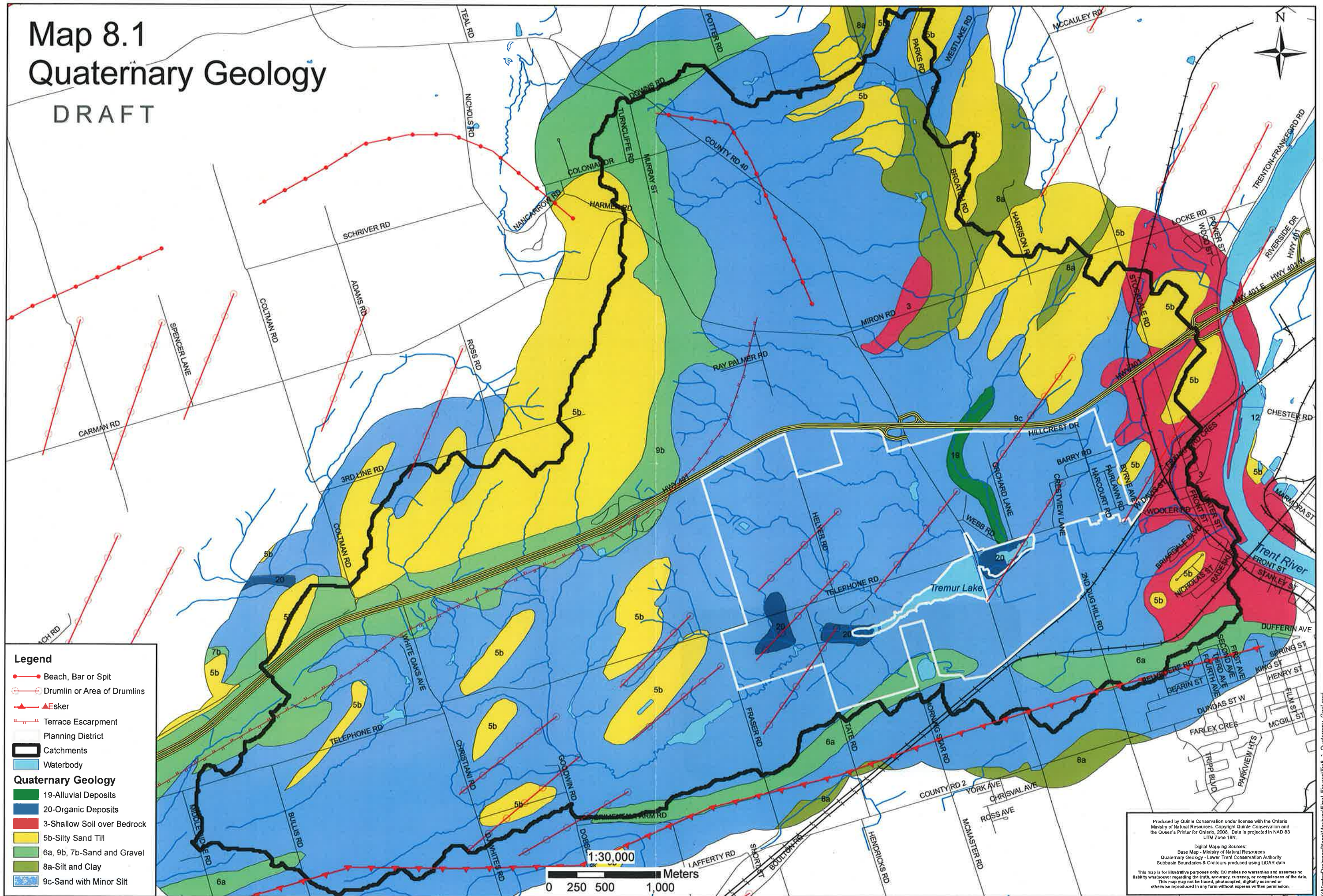
Produced by Quinte Conservation under license with the Ontario Ministry of Natural Resources. Copyright Quinte Conservation and the Queen's Printer for Ontario, 2005. Data is projected in NAD 83 UTM Zone 18N

Digital Mapping Sources
 Base Map - Ministry of Natural Resources
 Parcel Fabric, Draft Approved, Zoning - City of Quinte West
 Subbasin Boundaries & contours produced using LIDAR data

This map is for illustrative purposes only. QC makes no warranties and assumes no liability whatsoever regarding the truth, accuracy, currency, or completeness of the data. This map may not be traced, photocopied, digitally scanned or otherwise reproduced in any form without express written permission.

Map 8.1 Quaternary Geology

DRAFT



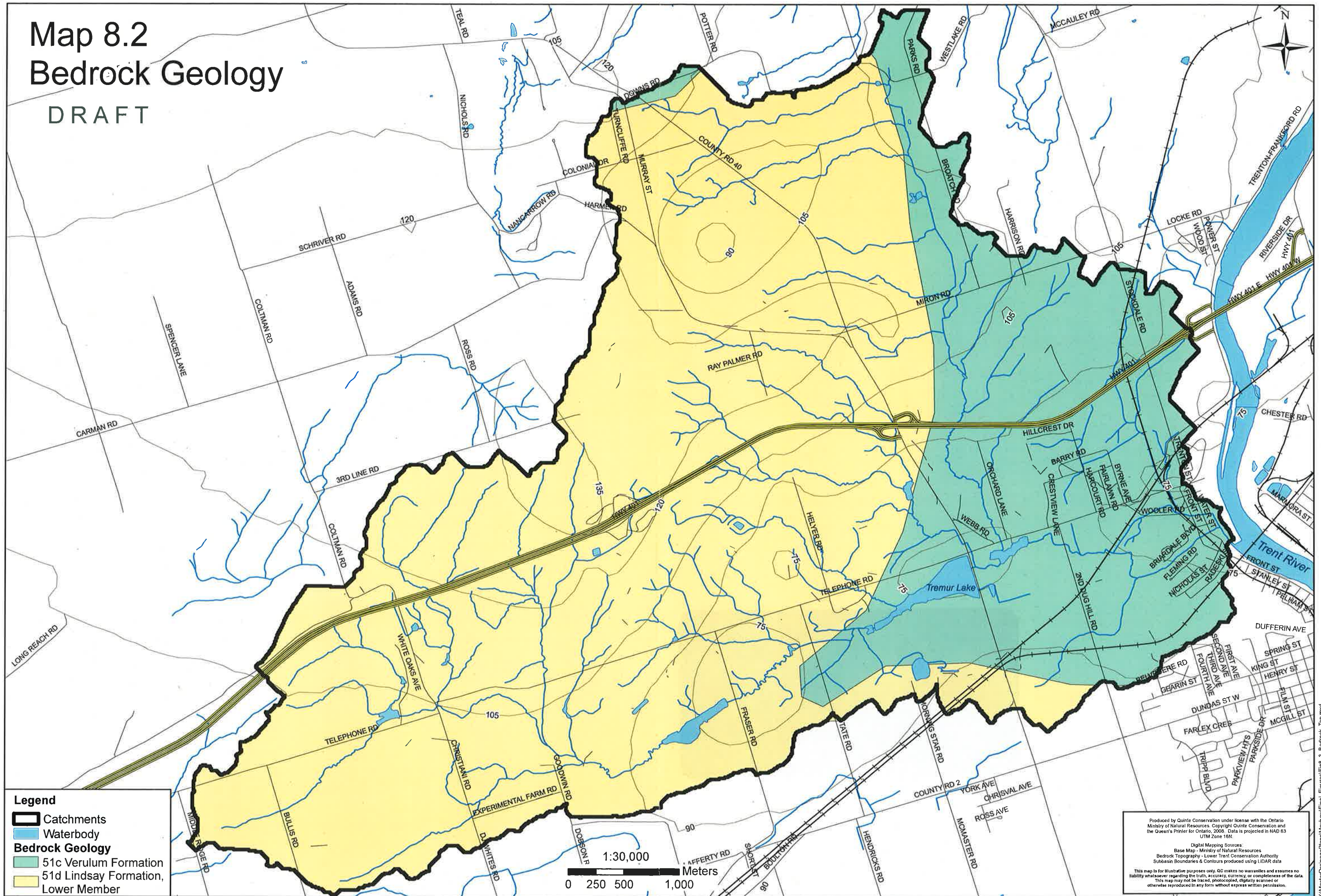
- Legend**
- Beach, Bar or Spit
 - Drumlin or Area of Drumlins
 - Esker
 - Terrace Escarpment
 - Planning District
 - Catchments
 - Waterbody
- Quaternary Geology**
- 19-Alluvial Deposits
 - 20-Organic Deposits
 - 3-Shallow Soil over Bedrock
 - 5b-Silty Sand Till
 - 6a, 9b, 7b-Sand and Gravel
 - 8a-Silt and Clay
 - 9c-Sand with Minor Silt

Produced by Quinte Conservation under license with the Ontario Ministry of Natural Resources. Copyright Quinte Conservation and the Queen's Printer for Ontario, 2008. Data is projected in NAD 83 UTM Zone 18N.

Digital Mapping Sources:
 Base Map - Ministry of Natural Resources
 Quaternary Geology - Lower Trent Conservation Authority
 Subbasin Boundaries & Contours produced using LIDAR data

This map is for illustrative purposes only. QC makes no warranties and assumes no liability whatsoever regarding the truth, accuracy, currency, or completeness of the data. This map may not be traced, photocopied, digitally scanned or otherwise reproduced in any form without express written permission.

Map 8.2 Bedrock Geology DRAFT



Legend

- Catchments
- Waterbody
- Bedrock Geology**
- 51c Verulum Formation
- 51d Lindsay Formation, Lower Member

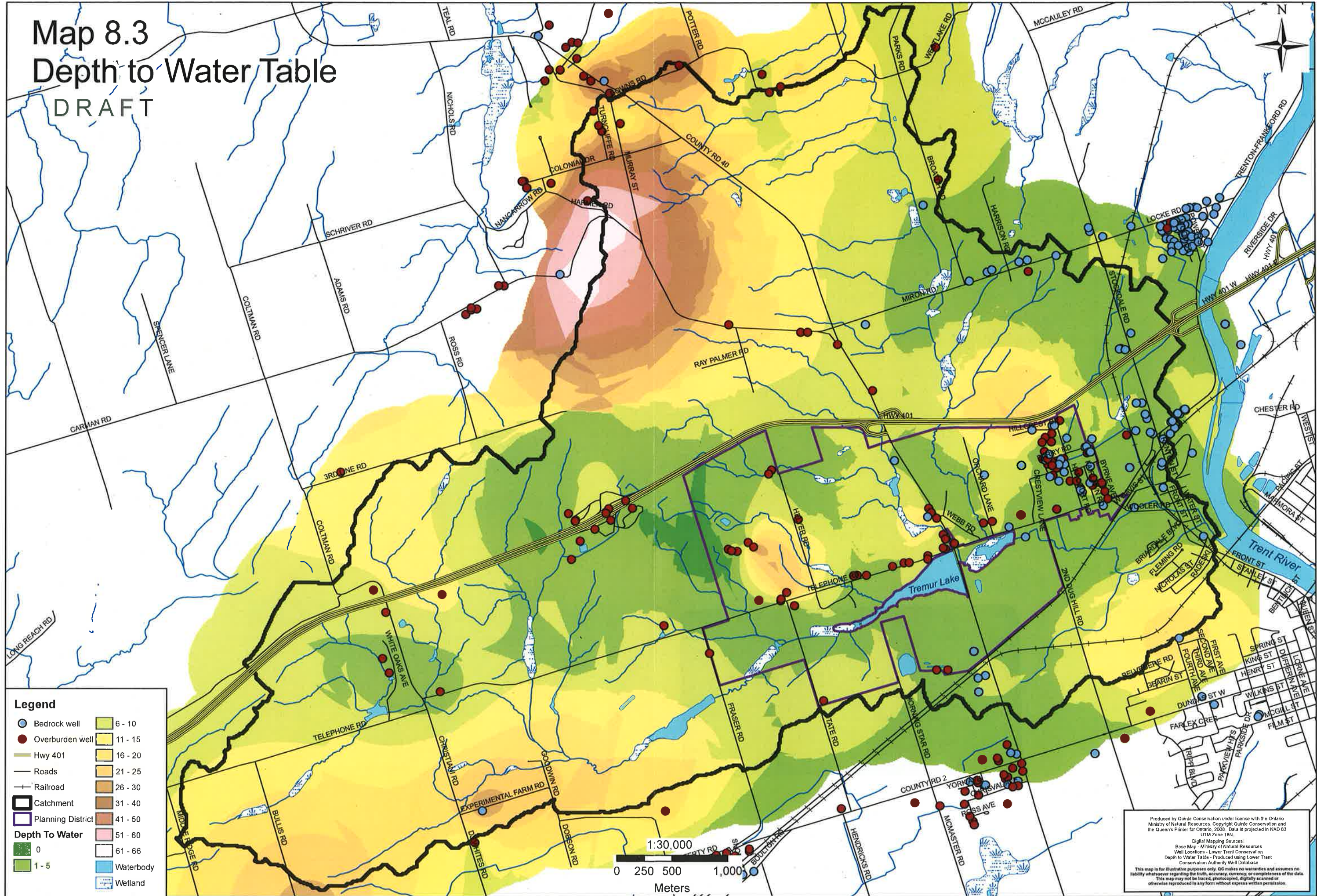
1:30,000
0 250 500 1,000 Meters

Produced by Quinte Conservation under license with the Ontario Ministry of Natural Resources. Copyright Quinte Conservation and the Queen's Printer for Ontario, 2008. Data is projected in NAD 83 UTM Zone 18N.

Digital Mapping Sources:
Base Map - Ministry of Natural Resources
Bedrock Topography - Lower Trent Conservation Authority
Subbasin Boundaries & Contours produced using LIDAR data

This map is for illustrative purposes only. QC makes no warranties and assumes no liability whatsoever regarding the truth, accuracy, currency or completeness of the data. This map may not be traced, photocopied, digitally scanned or otherwise reproduced in any form without express written permission.

Map 8.3 Depth to Water Table DRAFT



Legend

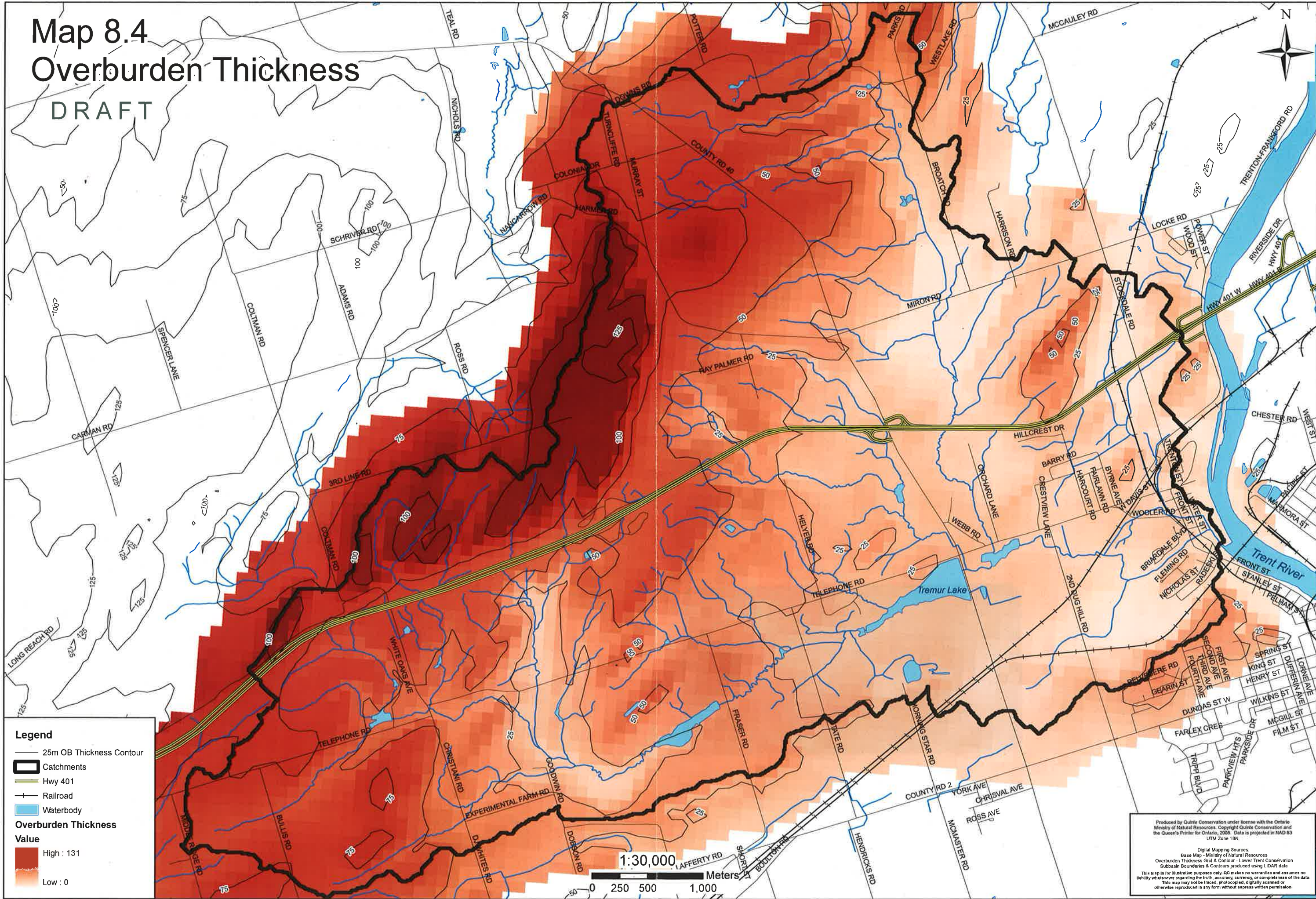
- Bedrock well
- Overburden well
- Hwy 401
- Roads
- Railroad
- Catchment
- Planning District
- Depth To Water**
- 0
- 1 - 5
- Waterbody
- Wetland
- 6 - 10
- 11 - 15
- 16 - 20
- 21 - 25
- 26 - 30
- 31 - 40
- 41 - 50
- 51 - 60
- 61 - 66

1:30,000
0 250 500 1,000
Meters

Produced by Quinte Conservation under license with the Ontario Ministry of Natural Resources. Copyright Quinte Conservation and the Queen's Printer for Ontario, 2008. Data is projected in NAD 83 UTM Zone 18N.
Digital Mapping Sources:
Base Map - Ministry of Natural Resources
Well Locations - Lower Trent Conservation
Depth to Water Table - Produced using Lower Trent Conservation Authority Well Database
This map is for illustrative purposes only. QC makes no warranties and assumes no liability whatsoever regarding the truth, accuracy, currency, or completeness of the data. This map may not be traced, photocopied, digitally scanned or otherwise reproduced in any form without express written permission.

Map 8.4 Overburden Thickness

DRAFT



Legend

- 25m OB Thickness Contour
- ▭ Catchments
- Hwy 401
- Railroad
- ▭ Waterbody

Overburden Thickness Value

- High : 131
- Low : 0

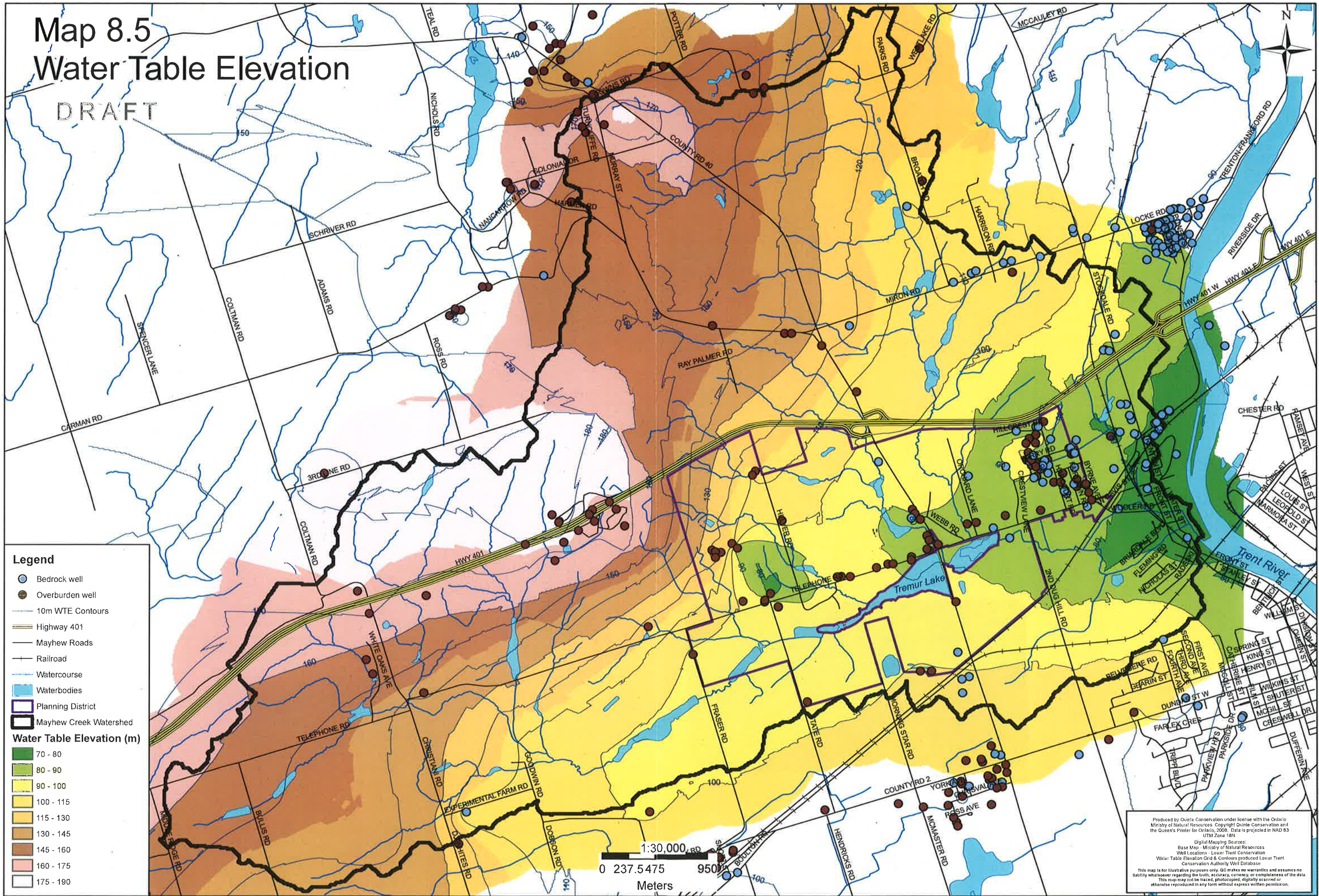
Produced by Quirke Conservation under license with the Ontario Ministry of Natural Resources. Copyright Quirke Conservation and the Queen's Printer for Ontario, 2008. Data is projected in NAD 83 UTM Zone 18N

Digital Mapping Sources:
 Base Map - Ministry of Natural Resources
 Overburden Thickness Grid & Contour - Lower Trent Conservation
 Subbasin Boundaries & Contours produced using LIDAR data

This map is for illustrative purposes only. QC makes no warranties and assumes no liability whatsoever regarding the truth, accuracy, currency, or completeness of the data. This map may not be traced, photocopied, digitally scanned or otherwise reproduced in any form without express written permission.

Map 8.5 Water Table Elevation

DRAFT



Legend

- Bedrock well
- Overburden well
- 10m WTE Contours
- Highway 401
- Mayhew Roads
- Railroad
- Watercourse
- Waterbodies
- Planning District
- Mayhew Creek Watershed

Water Table Elevation (m)

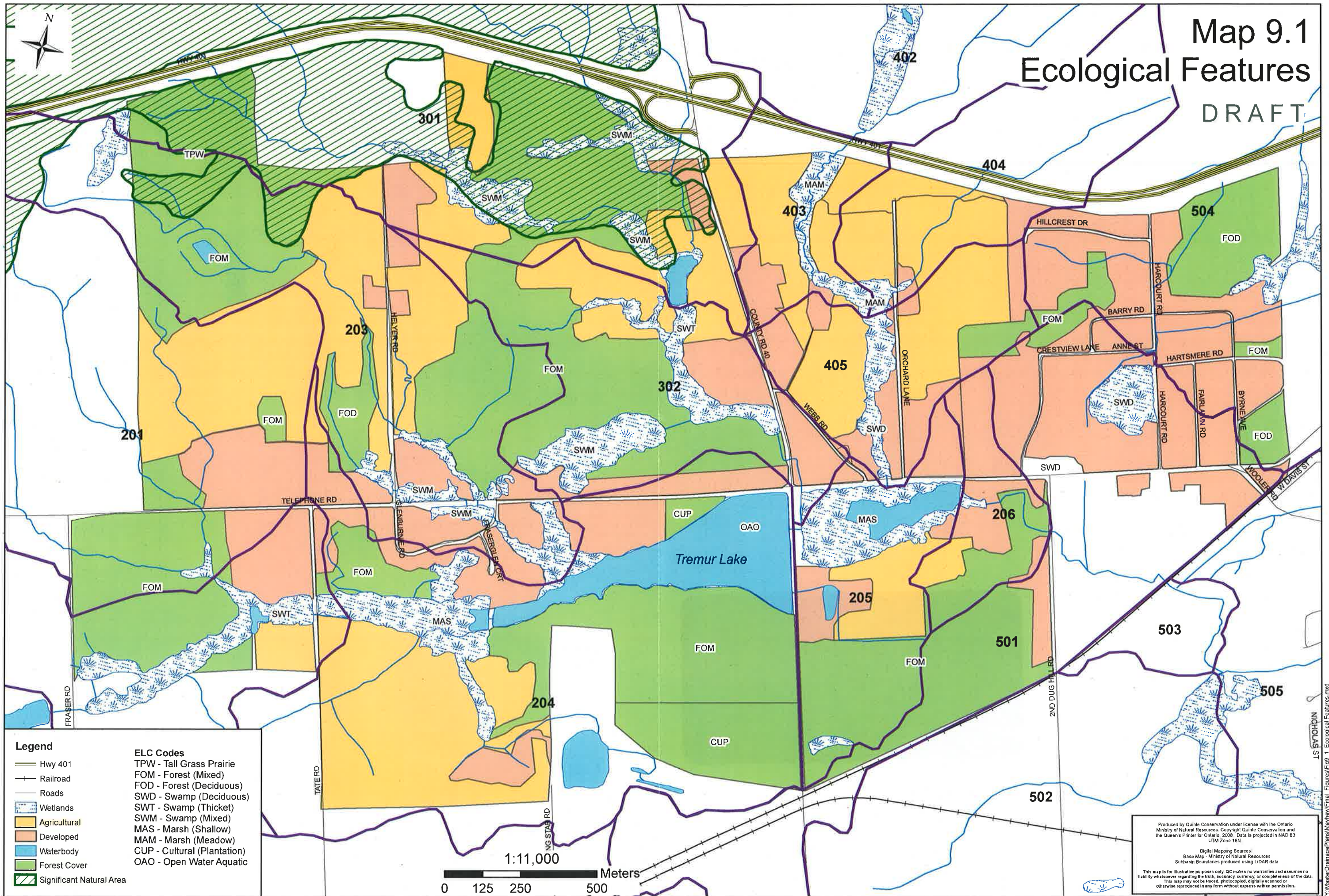
- 70 - 80
- 80 - 90
- 90 - 100
- 100 - 115
- 115 - 130
- 130 - 145
- 145 - 160
- 160 - 175
- 175 - 190

Produced by Quinte Conservation under license with the Ontario Ministry of Natural Resources. Copyright Quinte Conservation and the Queen's Printer for Ontario, 2008. Data is projected in NAD 83 UTM Zone 18N.

Digital Mapping Sources:
 Base Map - Ministry of Natural Resources
 Well Locations - Lower Trent Conservation
 Water Table Elevation Grid & Contours produced Lower Trent Conservation Authority Well Database

This map is for illustrative purposes only. QC makes no warranties and assumes no liability whatsoever regarding the truth, accuracy, currency or completeness of the data. This map may not be traced, photocopied, digitally scanned or otherwise reproduced in any form without express written permission.

Map 9.1 Ecological Features DRAFT



Legend

- Hwy 401
- Railroad
- Roads
- Wetlands
- Agricultural
- Developed
- Waterbody
- Forest Cover
- Significant Natural Area

ELC Codes

- TPW - Tall Grass Prairie
- FOM - Forest (Mixed)
- FOD - Forest (Deciduous)
- SWD - Swamp (Deciduous)
- SWT - Swamp (Thicket)
- SWM - Swamp (Mixed)
- MAS - Marsh (Shallow)
- MAM - Marsh (Meadow)
- CUP - Cultural (Plantation)
- OAO - Open Water Aquatic

Produced by Quinle Conservation under license with the Ontario Ministry of Natural Resources. Copyright Quinle Conservation and the Queen's Printer for Ontario, 2008. Data is projected in NAD 83 UTM Zone 18N.

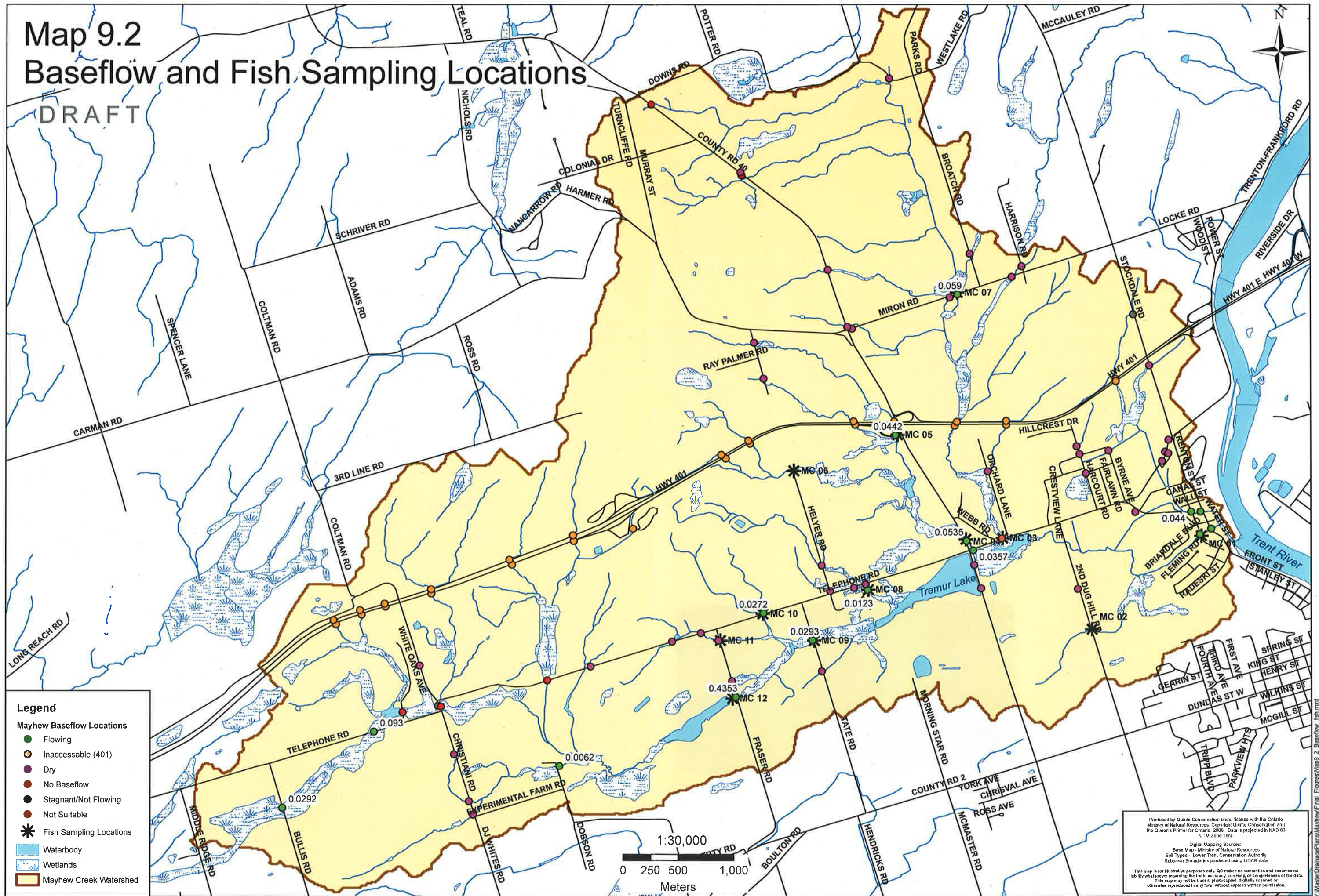
Digital Mapping Sources:
Base Map - Ministry of Natural Resources
Subbasin Boundaries produced using LIDAR data

This map is for illustrative purposes only. QC makes no warranties and assumes no liability whatsoever regarding the truth, accuracy, currency, or completeness of the data. This map may not be traced, photocopied, digitally scanned or otherwise reproduced in any form without express written permission.

Y:\MasterDrainagePlans\MapView\Final Figures\Fig 1 Ecological Features.mxd

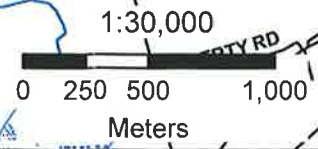
Map 9.2 Baseflow and Fish Sampling Locations

DRAFT



Legend

- Mayhew Baseflow Locations
 - Flowing
 - Inaccessible (401)
 - Dry
 - No Baseflow
 - Stagnant/Not Flowing
 - Not Suitable
- * Fish Sampling Locations
- Waterbody
- Wetlands
- Mayhew Creek Watershed



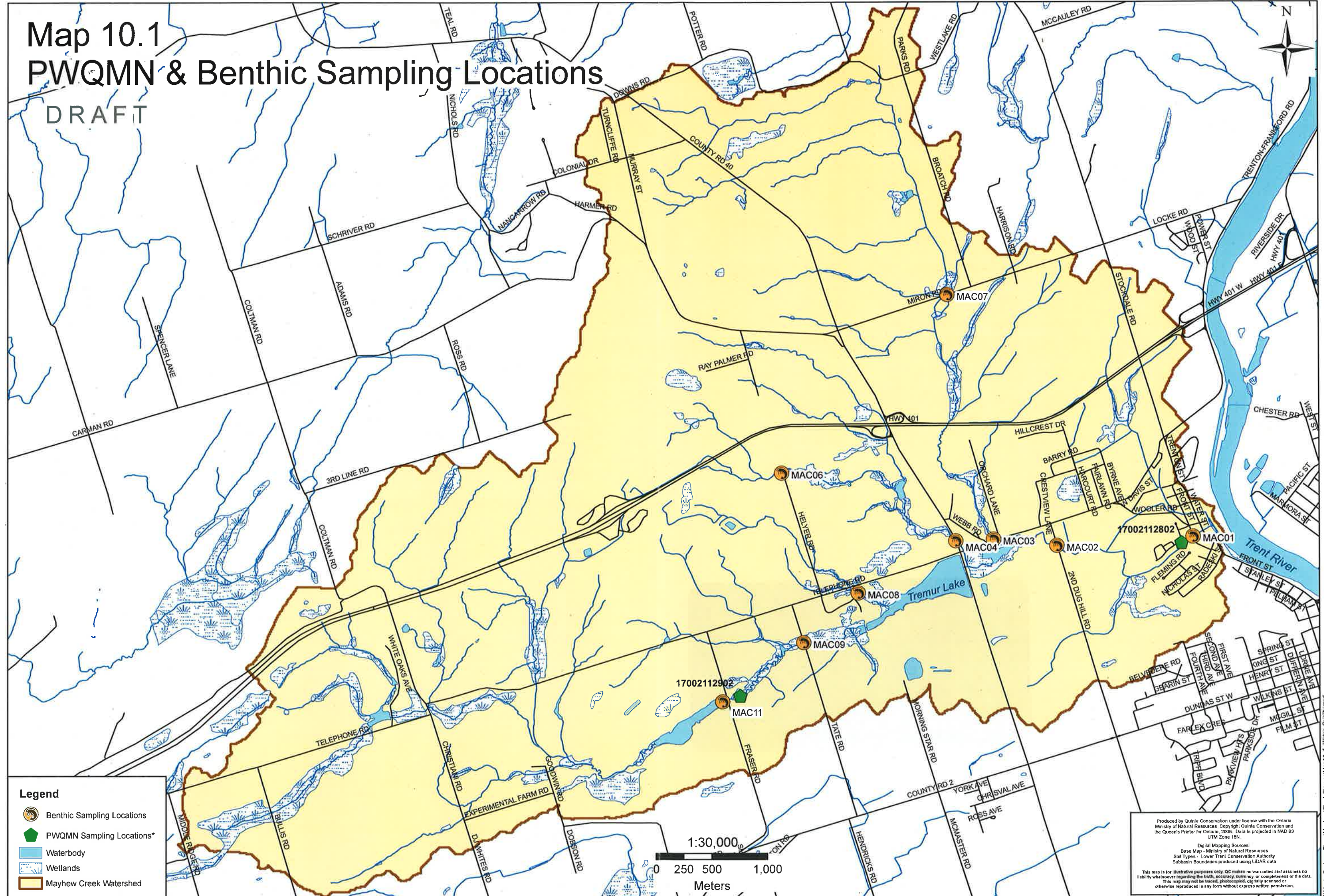
Produced by Quinte Conservation under license with the Ontario Ministry of Natural Resources. Copyright Quinte Conservation and the Queen's Printer for Ontario, 2008. Data is projected in NAD 83 UTM Zone 18N.

Digital Mapping Sources:
 Base Map - Ministry of Natural Resources
 Soil Types - Lower Trent Conservation Authority
 Subbasin Boundaries produced using LIDAR data





This map is for illustrative purposes only. QC makes no warranties and assumes no liability whatsoever regarding the truth, accuracy, currency, or completeness of the data. This map may not be traced, photocopied, digitally scanned or otherwise reproduced in any form without express written permission.

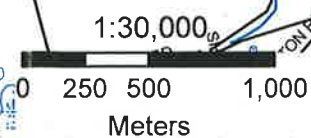
Map 10.1 PWQMN & Benthic Sampling Locations

DRAFT



Legend

-  Benthic Sampling Locations
-  PWQMN Sampling Locations*
-  Waterbody
-  Wetlands
-  Mayhew Creek Watershed



Produced by Quinte Conservation under license with the Ontario Ministry of Natural Resources. Copyright Quinte Conservation and the Queen's Printer for Ontario, 2008. Data is projected in NAD 83 UTM Zone 18N.

Digital Mapping Sources
 Base Map - Ministry of Natural Resources
 Soil Types - Lower Trent Conservation Authority
 Subbasin Boundaries produced using LIDAR data

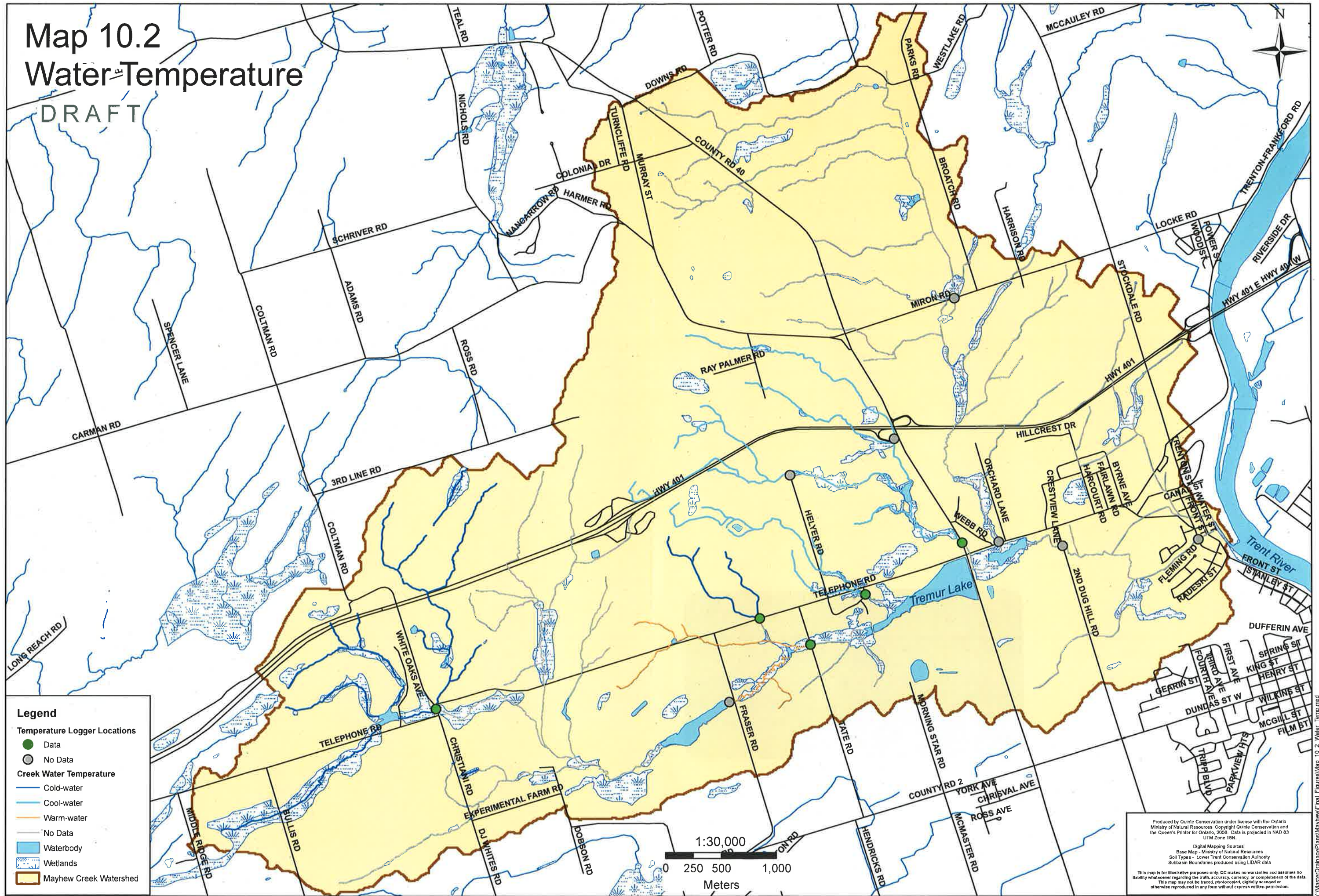
This map is for illustrative purposes only. QC makes no warranties and assumes no liability whatsoever regarding the truth, accuracy, currency, or completeness of the data. This map may not be traced, photocopied, digitally scanned or otherwise reproduced in any form without express written permission.

*PWQMN Sites moved approximately 150m to show locations

Y:\Master\DrainagePlans\Mayhew\Final_Figures\Map10.1_Water_Quality.mxd

Map 10.2 Water Temperature

DRAFT



Legend

- Temperature Logger Locations
 - Data
 - No Data
- Creek Water Temperature
 - Cold-water
 - Cool-water
 - Warm-water
 - No Data
- Waterbody
- Wetlands
- Mayhew Creek Watershed

Produced by Quinte Conservation under license with the Ontario Ministry of Natural Resources. Copyright Quinte Conservation and the Queen's Printer for Ontario, 2008. Data is projected in NAD 83 UTM Zone 18N.

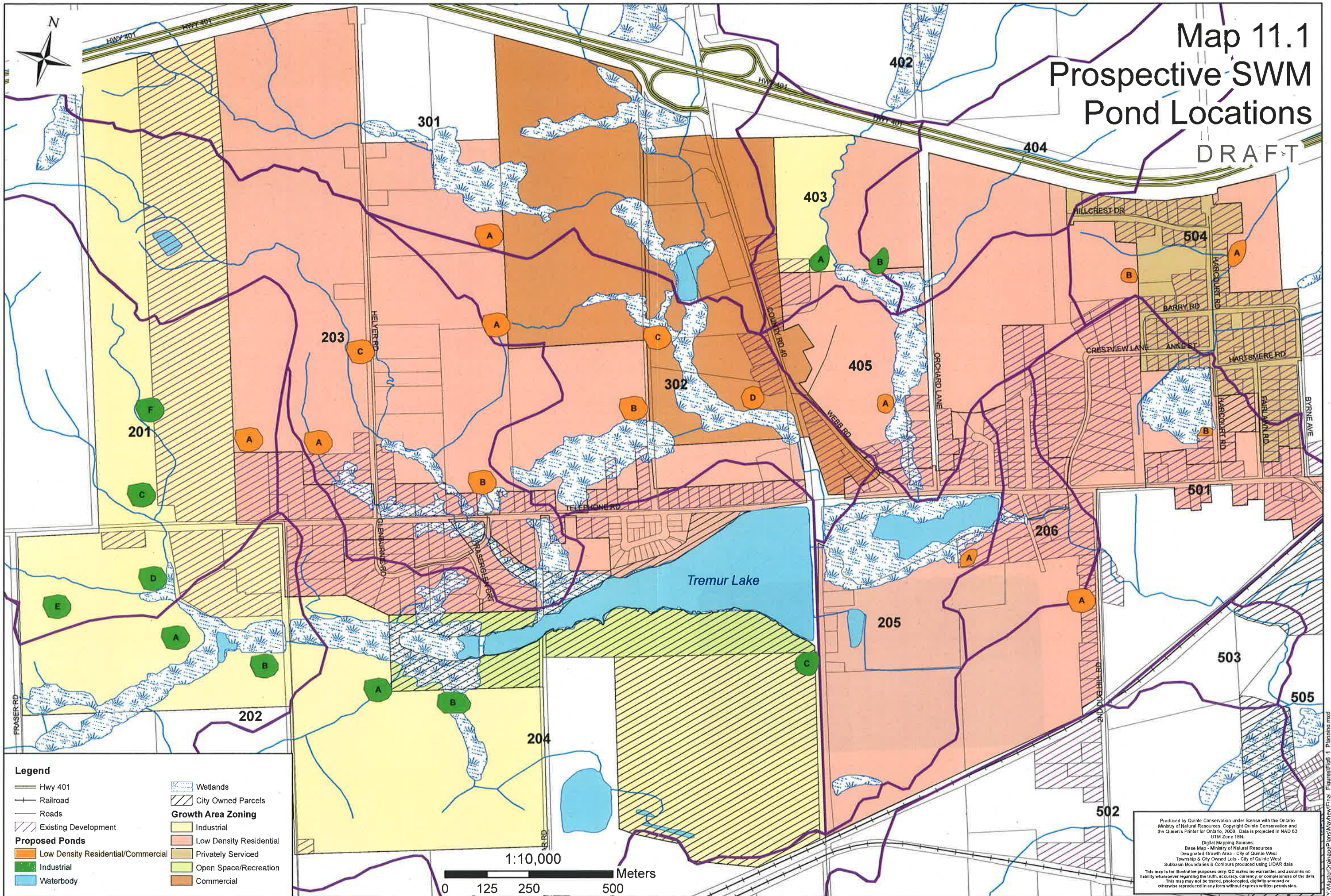
Digital Mapping Sources
 Base Map - Ministry of Natural Resources
 Soil Types - Lower Trent Conservation Authority
 Subbasin Boundaries produced using LIDAR data

This map is for illustrative purposes only. QC makes no warranties and assumes no liability whatsoever regarding the truth, accuracy, currency, or completeness of the data. This map may not be traced, photocopied, digitally scanned or otherwise reproduced in any form without express written permission.

Y:\Master\Drawings\Planes\Mayhew\Final_Figures\Map_10_2_Water_Temp.mxd

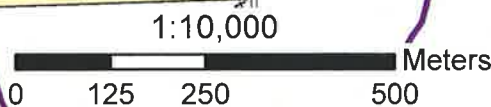
Map 11.1 Prospective SWM Pond Locations

DRAFT



Legend

- Hwy 401
- Railroad
- Roads
- Existing Development
- Wetlands
- City Owned Parcels
- Growth Area Zoning**
- Industrial
- Low Density Residential
- Privately Served
- Open Space/Recreation
- Commercial
- Proposed Ponds**
- Low Density Residential/Commercial
- Industrial
- Waterbody



Produced by Quinte Conservation under license with the Ontario Ministry of Natural Resources. Copyright Quinte Conservation and the Queen's Printer for Ontario, 2008. Data is projected in NAD 83 UTM Zone 18N.

Digital Mapping Sources
 Base Map - Ministry of Natural Resources
 Designated Growth Area - City of Quinte West
 Township & City Owned Lots - City of Quinte West
 Subbasin Boundaries & Contours produced using LIDAR data

This map is for illustrative purposes only. QC makes no warranties and assumes no liability whatsoever regarding the truth, accuracy, currency, or completeness of the data. This map may not be traced, photocopied, digitally scanned or otherwise reproduced in any form without express written permission.

Y:\Master\Ordnance\Plans\MapView\Final Figures\Fig 11 Planning.mxd