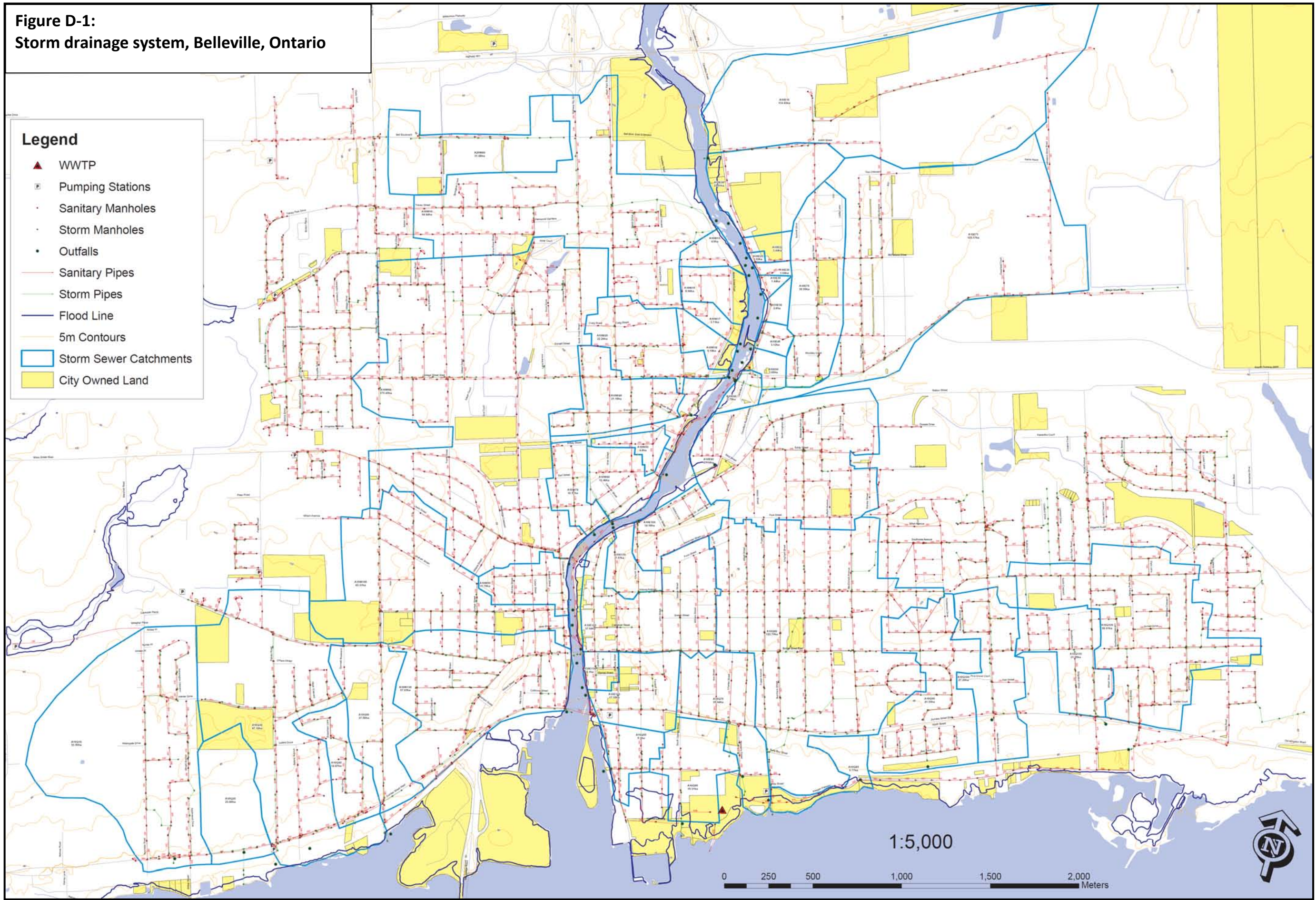


**Figure D-1:
Storm drainage system, Belleville, Ontario**

Legend

- ▲ WWTP
- Ⓟ Pumping Stations
- Sanitary Manholes
- Storm Manholes
- Outfalls
- Sanitary Pipes
- Storm Pipes
- Flood Line
- 5m Contours
- Storm Sewer Catchments
- City Owned Land



1:5,000

0 250 500 1,000 1,500 2,000 Meters



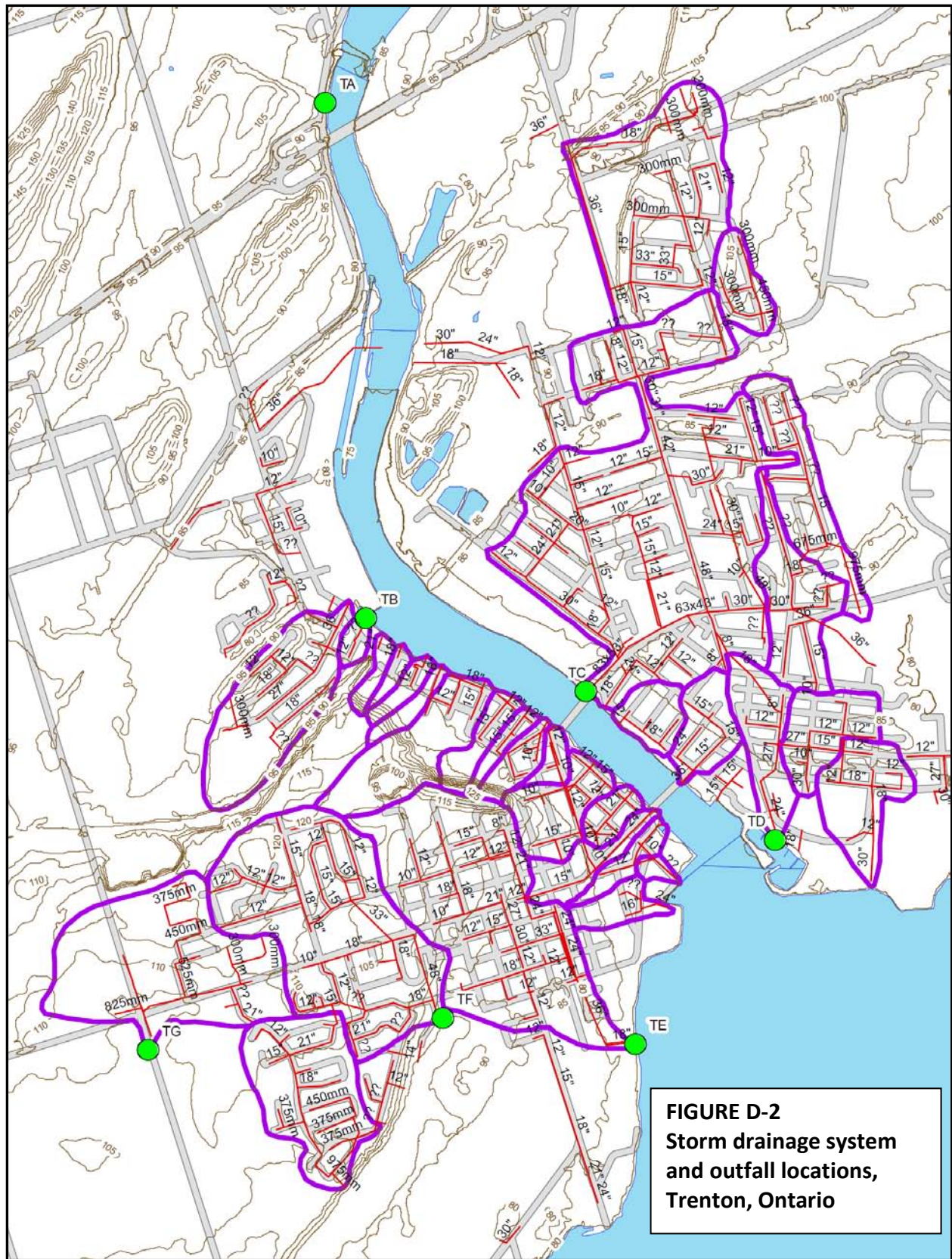
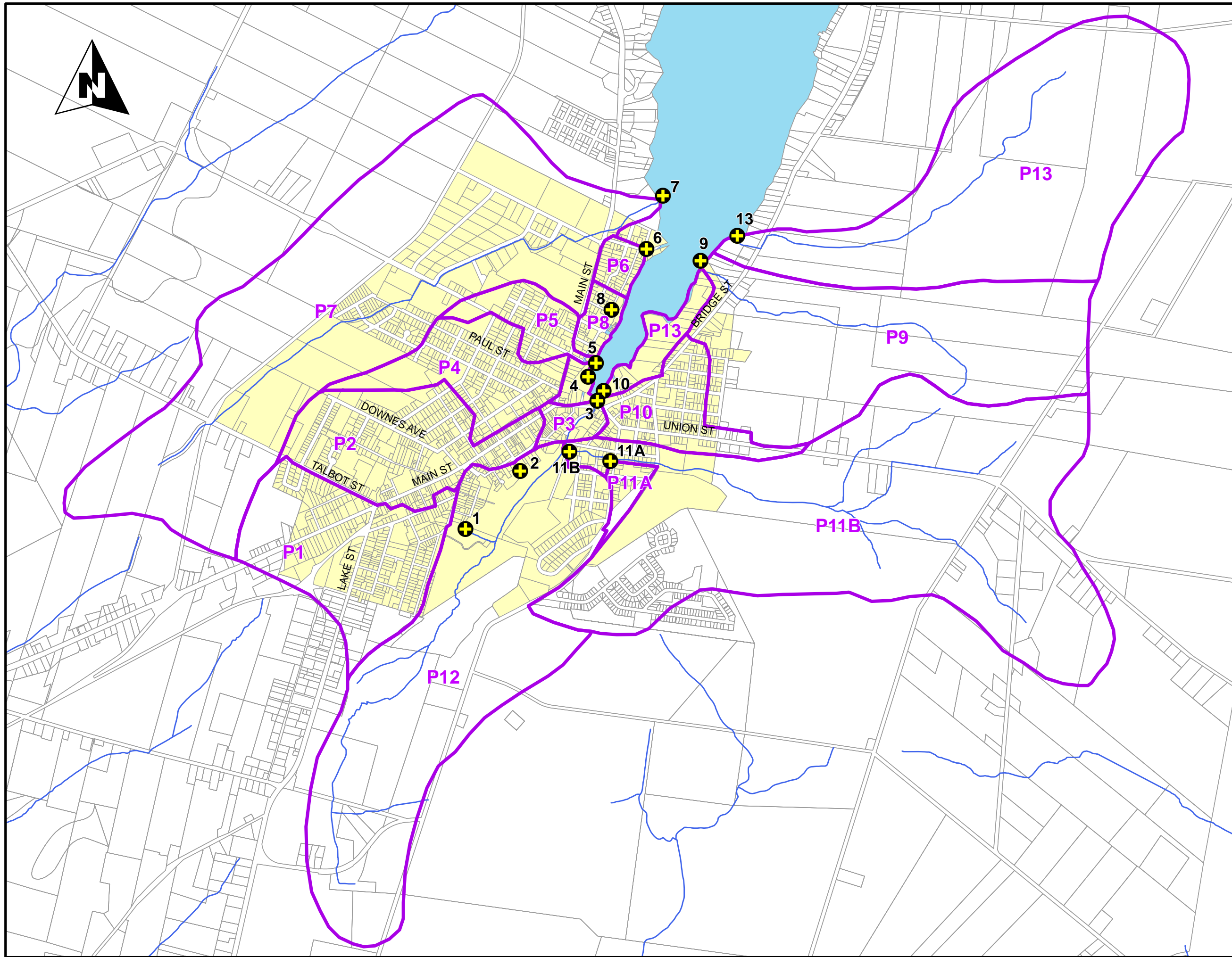


Figure D-3
Town of Picton
Drainage
Catchments and
Storm Outfalls



- Legend**
- ⊕ Outfalls
 - 🌀 Drainage Areas
 - ~ Streams
 - 🟡 Picton Parcels
 - 💧 Water Body

Meters
0 100 200 400 600 800



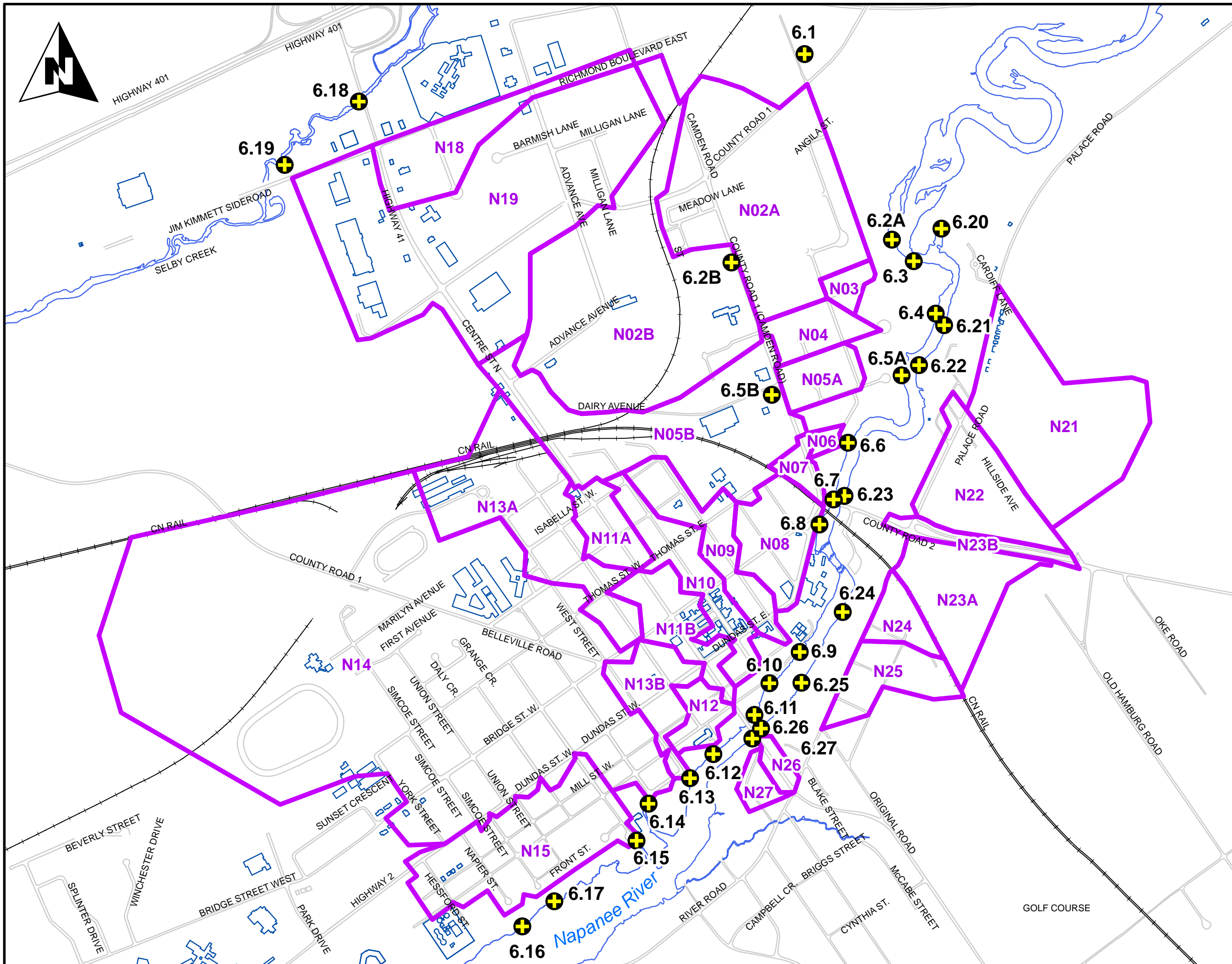








Figure D-4
Town of Napanee
Drainage
Catchments and
Outfalls

- Legend**
-  Outfalls
 -  Railroad
 -  Streams
 -  Roads
 -  Buildings
 -  Drainage Areas

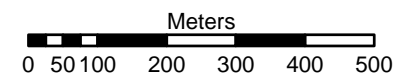
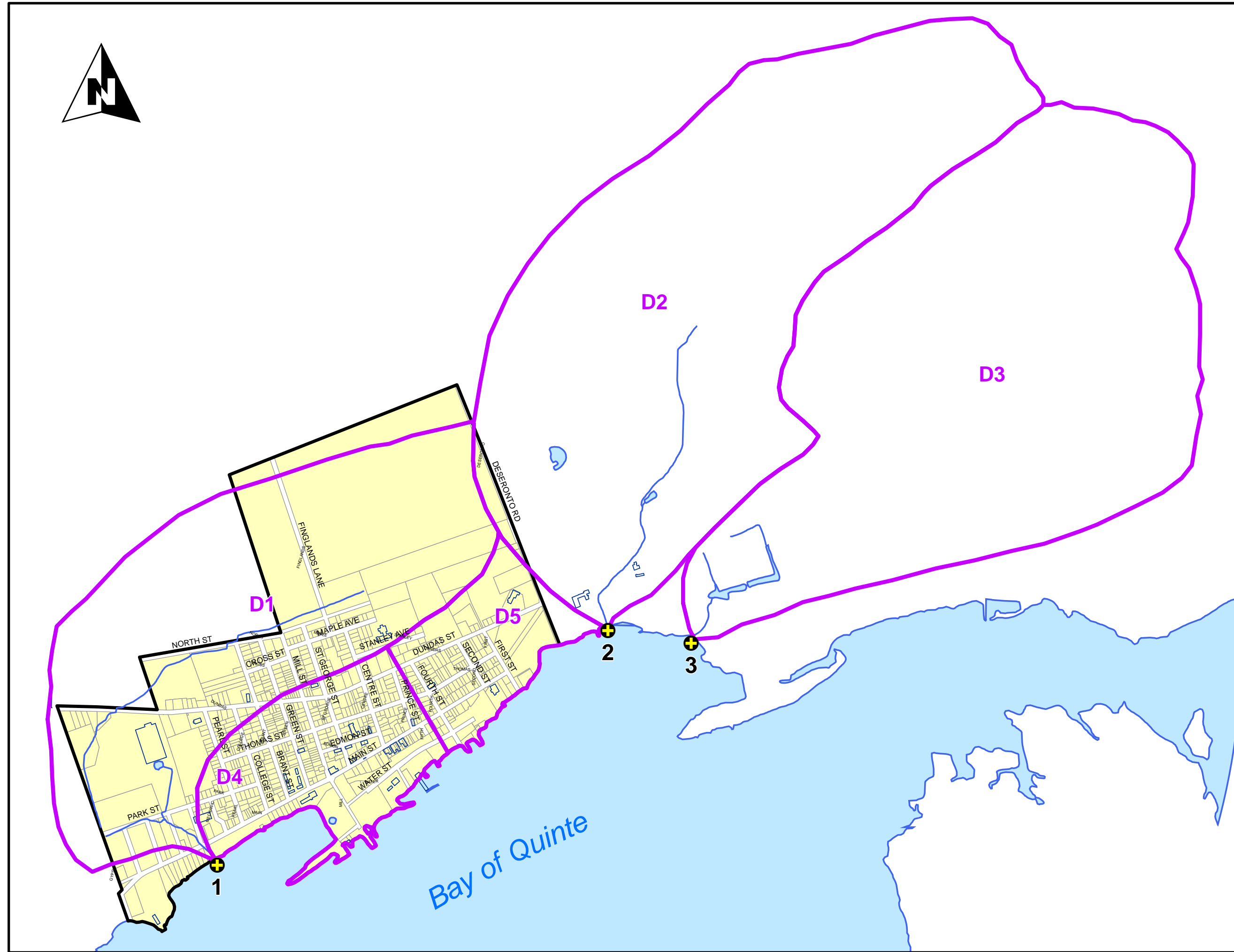








Figure D-5
Town of
Deseronto
Drainage
Catchments and
Outfall Locations

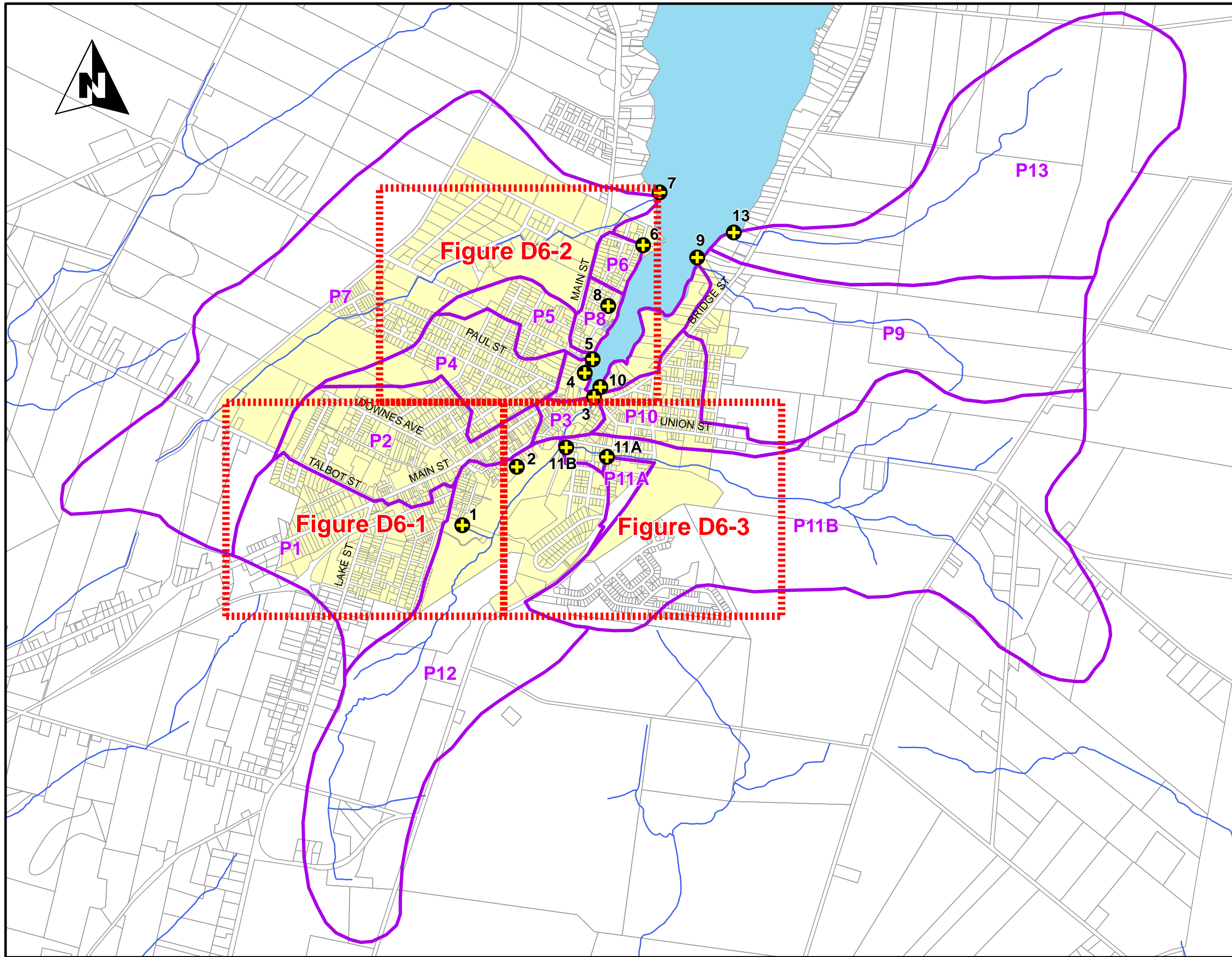


- Legend**
-  Outfalls
 -  Drainage Areas
 -  Buildings
 -  Streams
 -  Waterbodies
 -  Deseronto Parcels



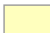

Meters
0 100 200 400 600 800



Figure D-6
Town of Picton
Storm Sewers -
Index Sheet

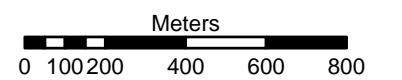


Legend

-  Outfalls
-  Drainage Areas
-  Streams
-  Picton Parcels
-  Water Body

Note:
This map shows the extent of the current
mapping of the storm pipe network for Picton.
Further review is needed to ensure system
mapping is complete.

December 2010



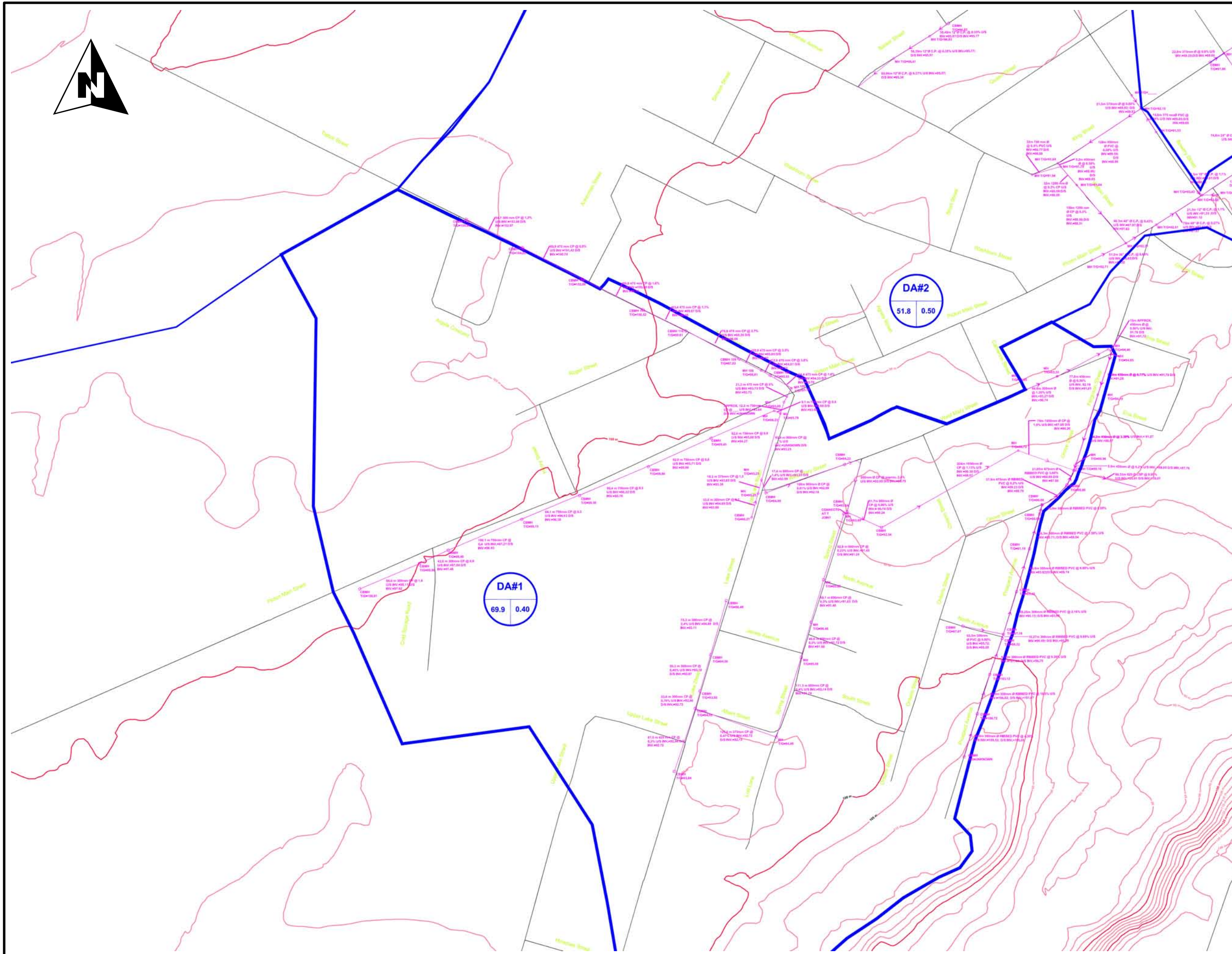


Figure D6-1 Town of Picton Storm Sewers Detail

Elevations shown are geodetic; however elevation data should not be used for construction purposes.

Note:
This map shows the extent of the current mapping of the storm pipe network for Picton. Further review is needed to ensure system mapping is complete.

December 2010

NOT TO SCALE



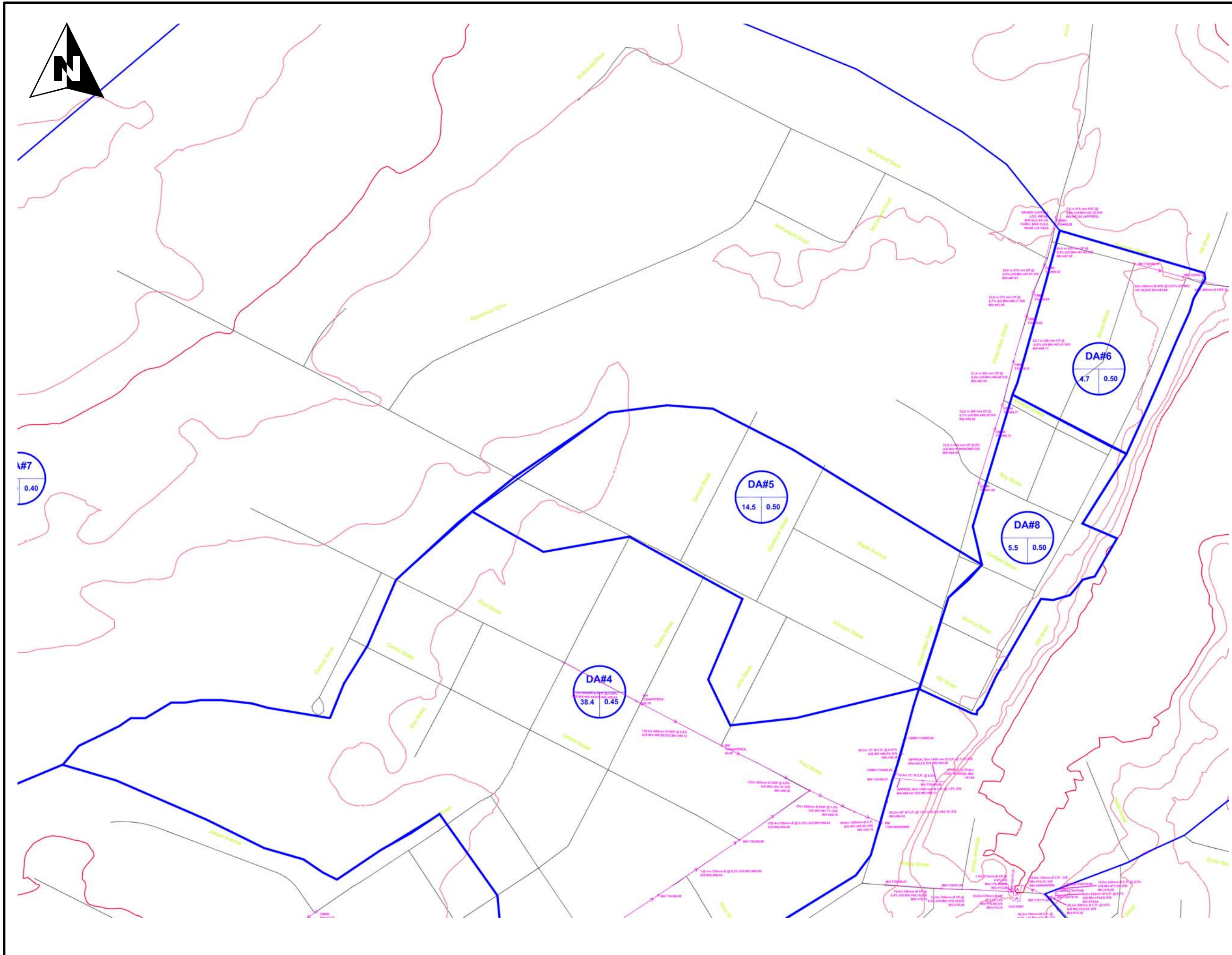


Figure D6-2 Town of Picton Storm Sewers Detail

Elevations shown are geodetic; however elevation data should not be used for construction purposes.

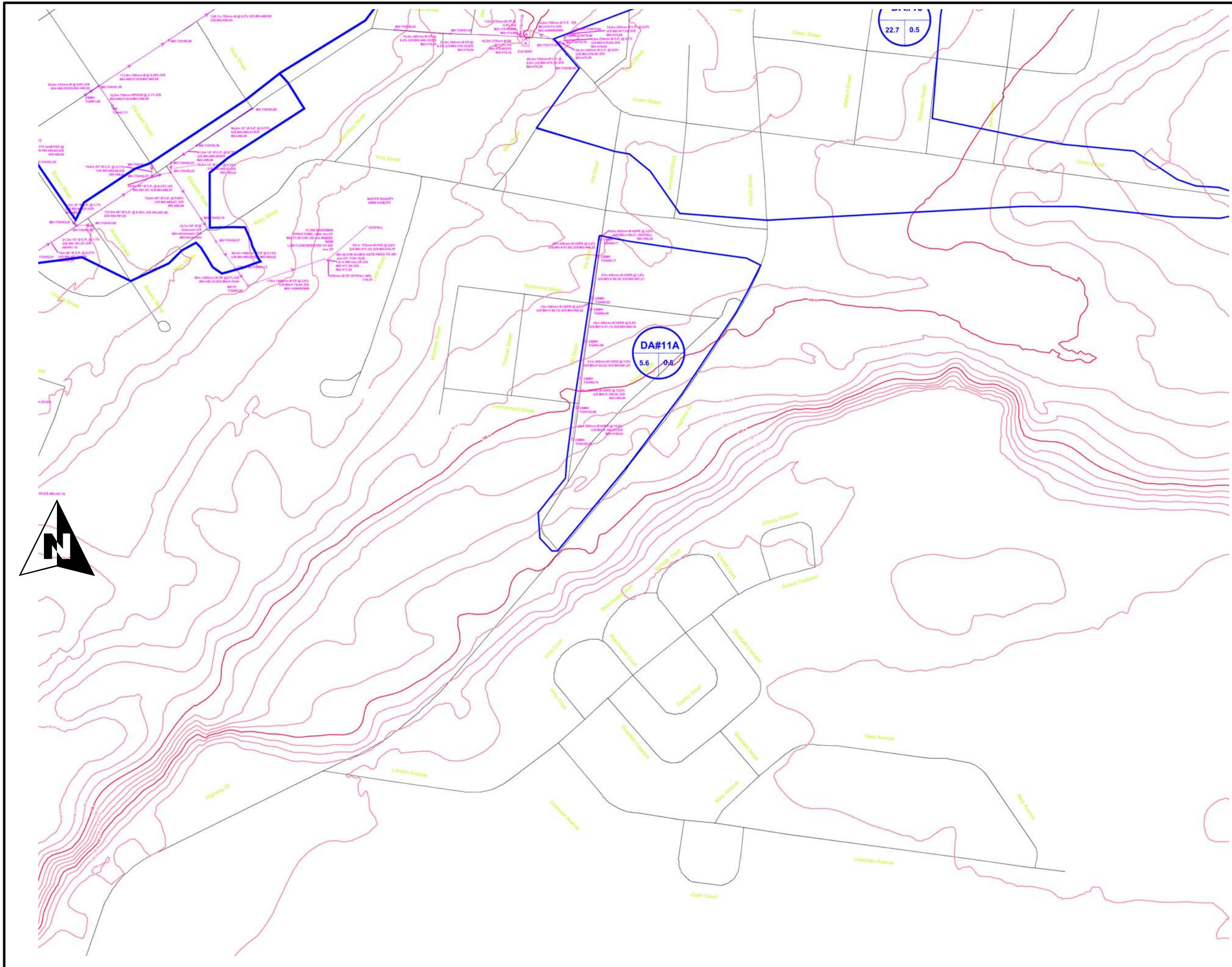
Note:
This map shows the extent of the current mapping of the storm pipe network for Picton. Further review is needed to ensure system mapping is complete.

December 2010

NOT TO SCALE



Figure D6-3 Town of Picton Storm Sewers Detail



Elevations shown are geodetic; however elevation data should not be used for construction purposes.









Note:
This map shows the extent of the current mapping of the storm pipe network for Picton. Further review is needed to ensure system mapping is complete.

December 2010

NOT TO SCALE



FIGURE D-7
Town of Napanee
Storm System Mapping

-  Buildings.shp
-  Storm_mh.shp
-  Storm_pipes.shp
-  Drainage_areas.shp
-  Streams.shp
-  Outfalls.shp
-  Railroad.shp
-  Roads.shp

