

UTM Zone 18, NAD 83

Digital Mapping Sources:
 Base Mapping Features - CANMAP v5.0,
 MOE NRVIS data

Disclaimer: Only georeferenced data provided at the time of the report is shown. Both georeferenced and non-georeferenced data is in the digital database. The completeness and positional accuracy of the plotted data is variable. Some locations may appear in duplicate. The map should only be interpreted in conjunction with the accompanying written report.

Date: August 2004 © 2004 Queen's Printer for Ontario

- Legend**
- ⊙ Major Population Centres
 - Communities
 - Contours 10m Interval
 - Expressways
 - Highways
 - Rivers
 - Lakes
 - Wetlands
 - Water Table (masl)
 - High : 455
 - Low : 280

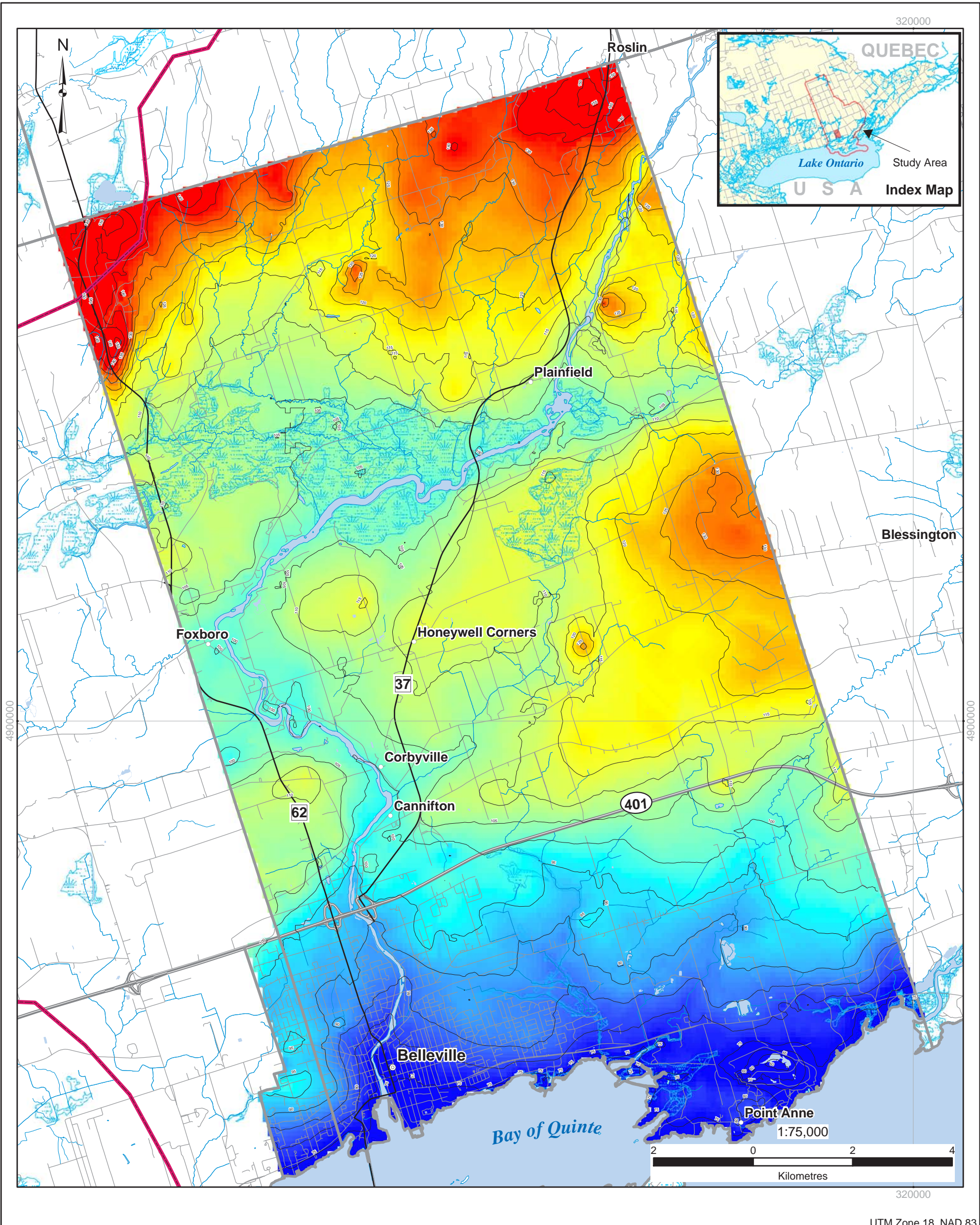
masl: Metres above sea level

in association with
 Agricultural Watersheds Associates

Town of Bancroft Water Table Map
Quinte Regional Groundwater Study

BAN-1

G:\Projects\2003\031-119004_Quinte\GIS\MXDs\Town_of_Bancroft_waterable.mxd



Digital Mapping Sources:
 Base Mapping Features - CANMAP v5.0,
 MOE NRVIS data

Disclaimer: Only georeferenced data provided at the time of the report is shown. Both georeferenced and non-georeferenced data is in the digital database. The completeness and positional accuracy of the plotted data is variable. Some locations may appear in duplicate. The map should only be interpreted in conjunction with the accompanying written report.

Date: August 2004 © 2004 Queen's Printer for Ontario

in association with

Agricultural Watersheds Associates

Legend

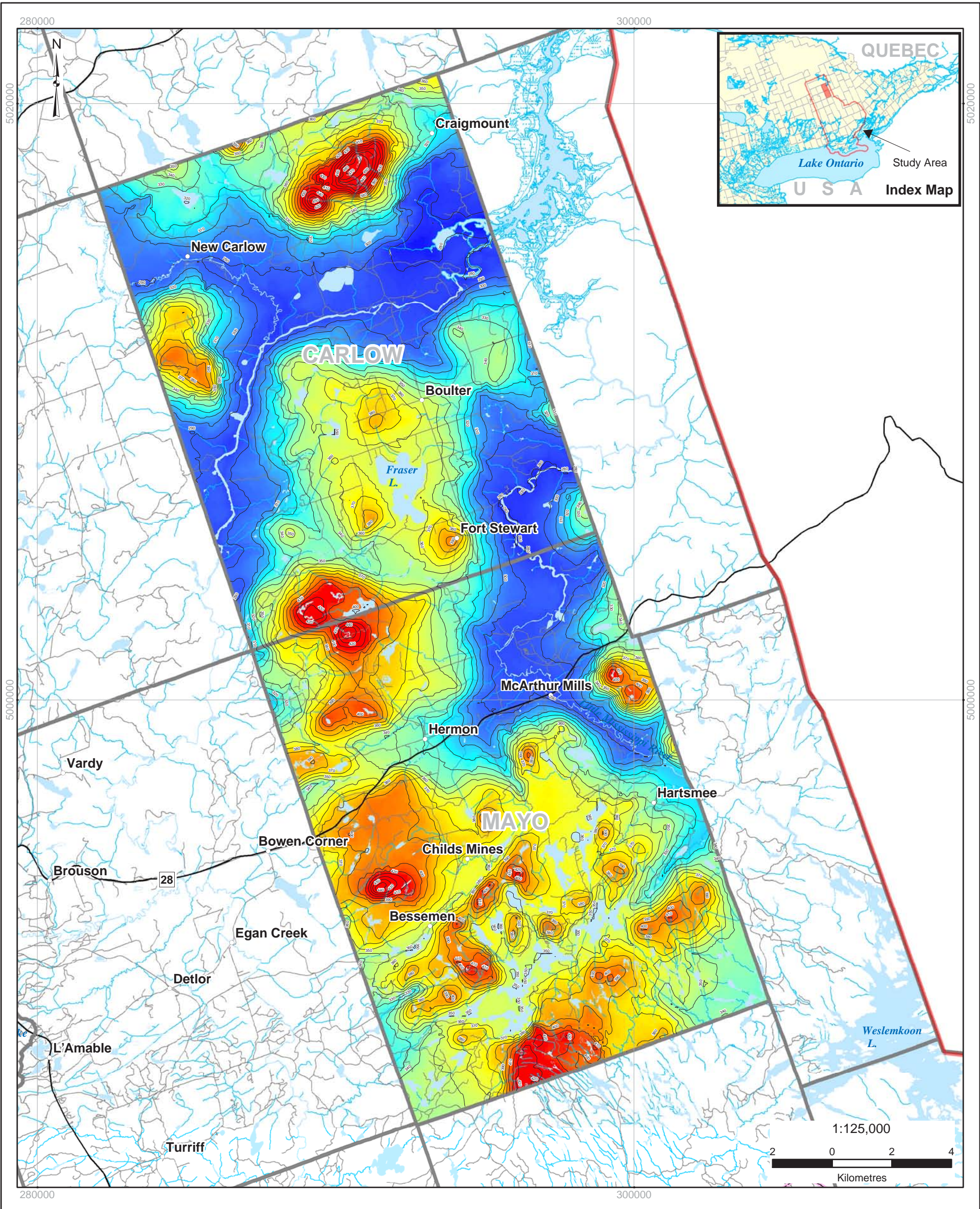
- ⊙ Major Population Centres
- Communities
- Expressways
- Highways
- Rivers
- Lakes
- Contours Interval 5m
- Wetlands
- Quinte Conservation Area
- Water Table (masl)
 - High : 160
 - Low : 75

masl: Metres above sea level

City of Belleville Water Table Map
Quinte Regional Groundwater Study

BEL-1

G:\Projects\2003\031-119004_Quinte\GIS\MXD\City_of_Belleville_waterTable.mxd



UTM Zone 18, NAD 83

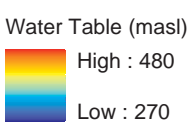
Digital Mapping Sources:
 Base Mapping Features - CANMAP v5.0,
 Prince Edward Municipal Mapping, MOE NRVIS data

Disclaimer: Only georeferenced data provided at the time of the report is shown. Both georeferenced and non-georeferenced data is in the digital database. The completeness and positional accuracy of the plotted data is variable. Some locations may appear in duplicate. The map should only be interpreted in conjunction with the accompanying written report.

Date: August 2004 © 2004 Queen's Printer for Ontario

Legend

- ⊙ Major Population Centres
- Communities
- Contours - 10m Interval
- Expressways
- Highways
- Rivers
- Lakes
- Wetlands
- ▭ Study Area Boundary



masl: Metres above sea level

in association with

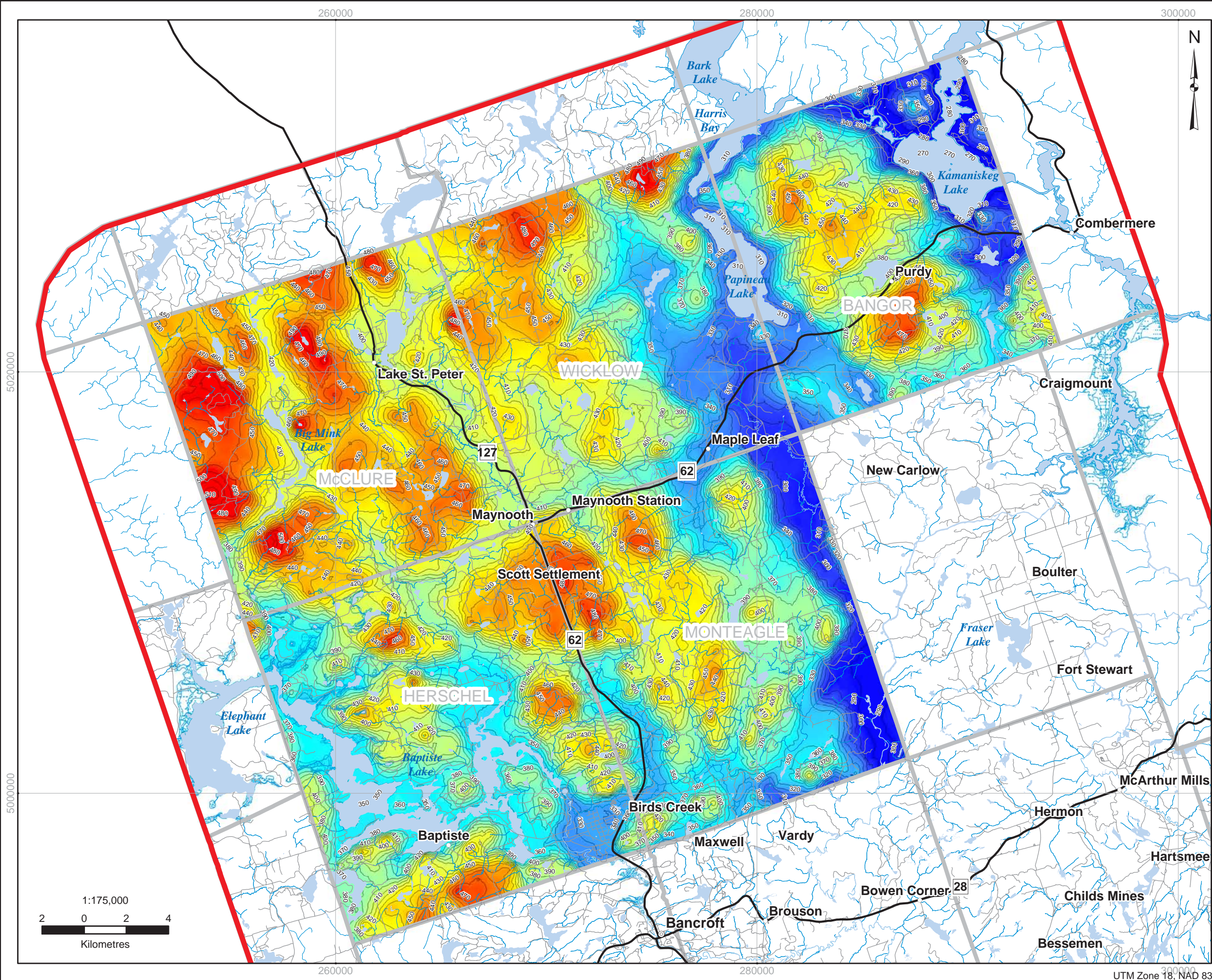
Agricultural Watersheds Associates

Township of Carlow and Mayo Water Table Map
Quinte Regional Groundwater Study

CAR-1

G:\Projects\2003\031-119004_Quinte\GIS\MXDs\Township_of_Carlow_Mayo_waterable.mxd

C:\Projects\2003\031-119004_Quinte\GIS\MXDs\Municipality_of_Hastings_Highlands_waterable.mxd



Legend

- ⊙ Major Population Centres
- Communities
- Expressways
- Highways
- Roads
- Contours - 10m Interval
- Rivers
- Lakes
- Wetlands
- ▭ Study Area Boundary

Water Table (masl)

- High : 520
- Low : 250

masl: Metres above sea level



Digital Mapping Sources:
 Base Mapping Features - CANMAP v5.0,
 MOE NRVIS data

Disclaimer: Only georeferenced data provided at the time of the report is shown. Both georeferenced and non-georeferenced data is in the digital database. The completeness and positional accuracy of the plotted data is variable. Some locations may appear in duplicate. The map should only be interpreted in conjunction with the accompanying written report.

Date: August 2004 © 2004 Queen's Printer for Ontario

DILLON CONSULTING

in association with

Lissom
EARTH SCIENCES

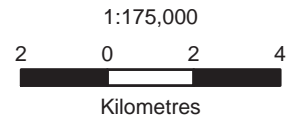
Golder Associates

Ainley
EARTH SCIENCES & CONSULTING

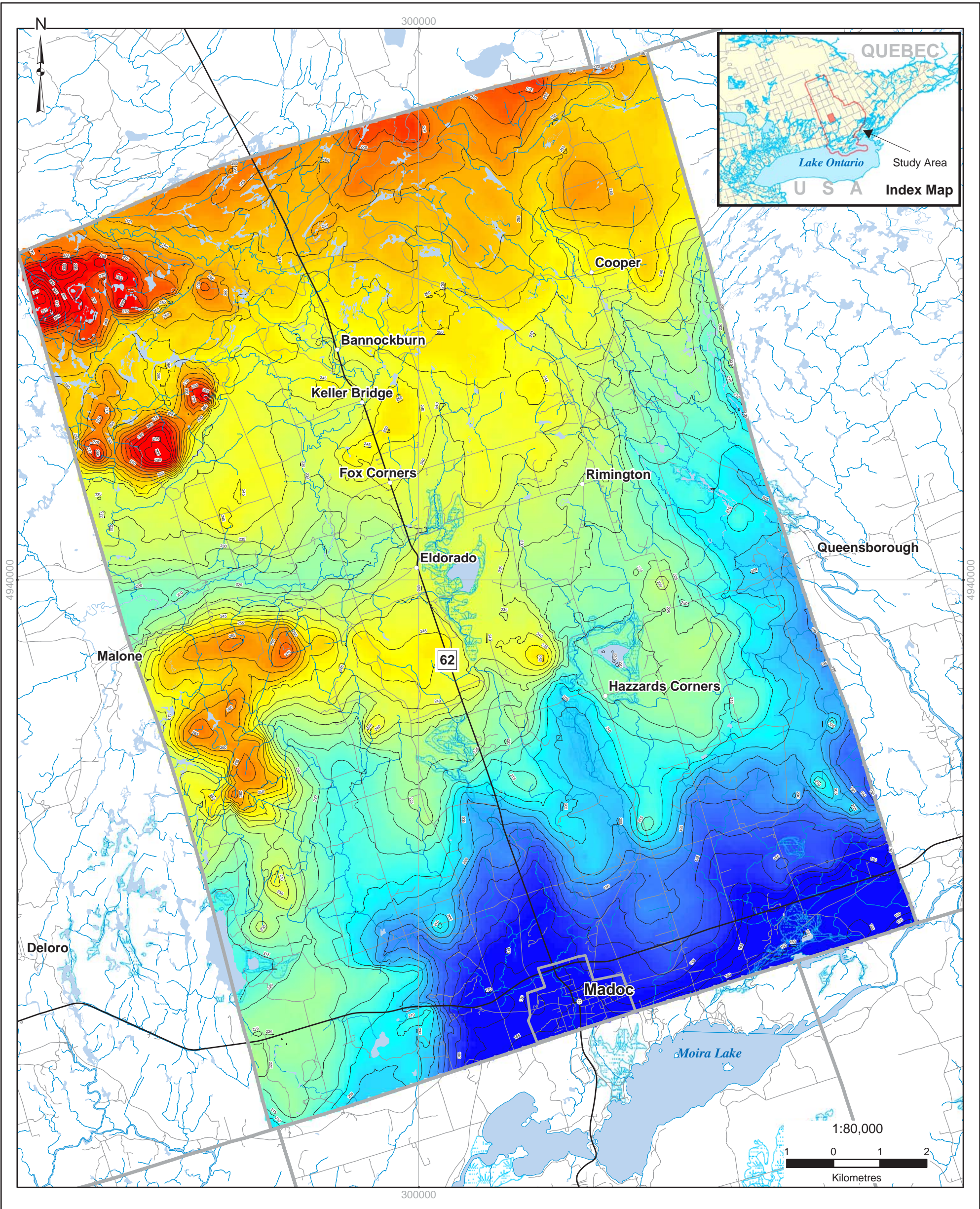
Agricultural Watersheds Associates

HAST-1: Municipality of Hastings Highlands Water Table Map

Quinte Regional Groundwater Study



UTM Zone 18, NAD 83



Digital Mapping Sources:
 Base Mapping Features - CANMAP v5.0,
 MOE NRVIS data

Disclaimer: Only georeferenced data provided at the time of the report is shown. Both georeferenced and non-georeferenced data is in the digital database. The completeness and positional accuracy of the plotted data is variable. Some locations may appear in duplicate. The map should only be interpreted in conjunction with the accompanying written report.

Date: August 2004 © 2004 Queen's Printer for Ontario

Legend

- ⊙ Major Population Centres
- Communities
- Contours - 5m Interval
- Expressways
- Highways
- Roads
- Rivers
- Lakes
- Wetlands
- Water Table (masl)
 - High : 320
 - Low : 150

UTM Zone 18, NAD 83

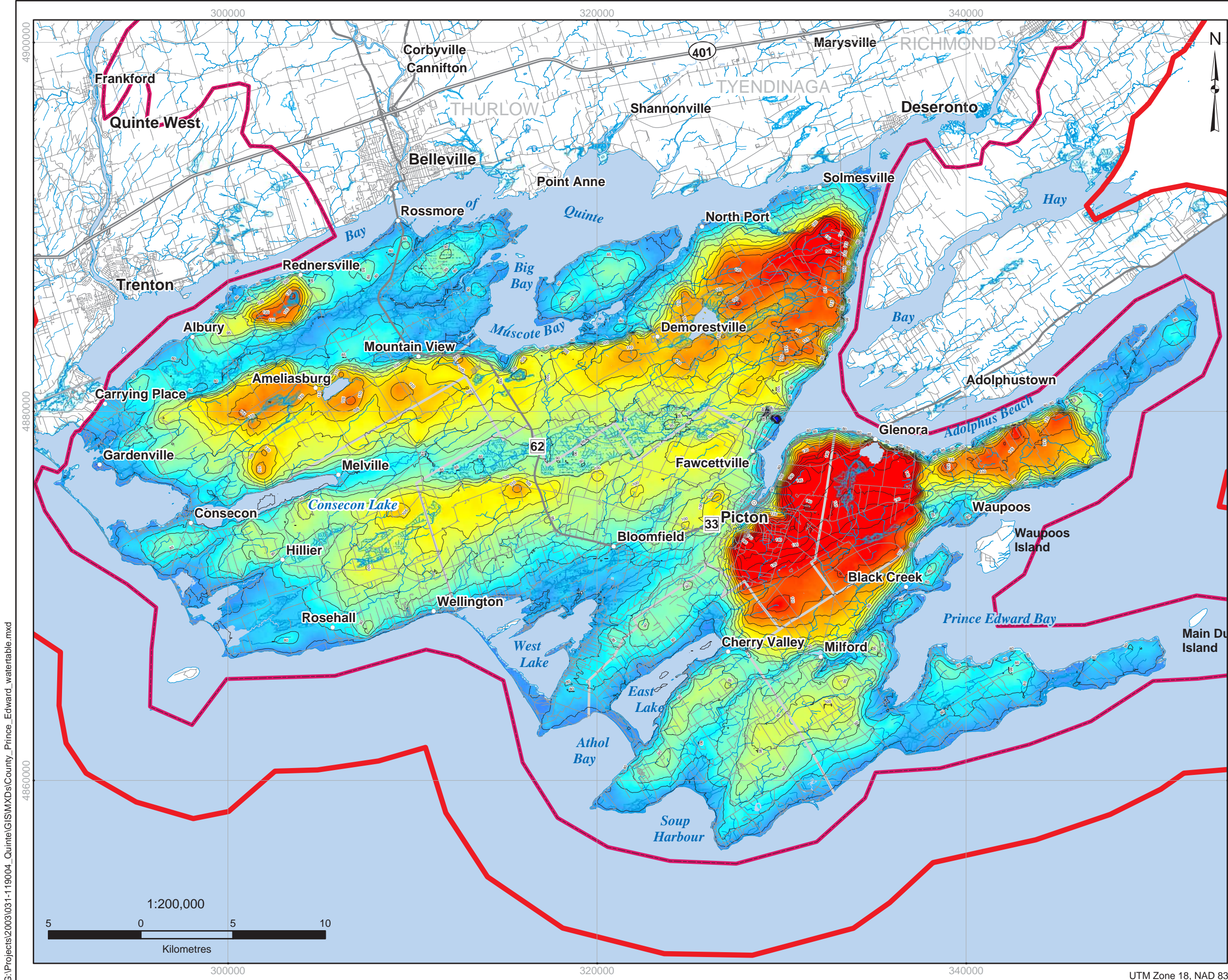
masl: Metres above sea level

in association with
 Agricultural Watersheds Associates

Township of Madoc Water Table Map
Quinte Regional Groundwater Study

MAD-1

G:\Projects\2003\031-119004_Quinte\GIS\MXDs\Township_of_Madoc_waterable.mxd



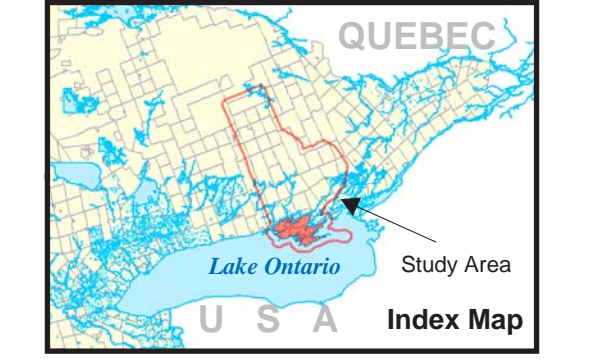
Legend

- Communities
- ⊙ Major Population Centres
- Expressways
- Highways
- Contours Interval 5m
- Rivers
- Lakes
- Wetlands
- Quinte Conservation Area
- Study Area Boundary

Water Table (masl)

High : 148
Low : 75

masl: Metres above sea level



Digital Mapping Sources:
Base Mapping Features - CANMAP v5.0,
Prince Edward Municipal Mapping, MOE NRVIS data

Disclaimer: Only georeferenced data provided at the time of the report is shown. Both georeferenced and non-georeferenced data is in the digital database. The completeness and positional accuracy of the plotted data is variable. Some locations may appear in duplicate. The map should only be interpreted in conjunction with the accompanying written report.

Date: August 2004 © 2004 Queen's Printer for Ontario

DILLON CONSULTING

in association with

Lissom
EARTH SCIENCES

Golder Associates

Ainley
CONSULTING INC.

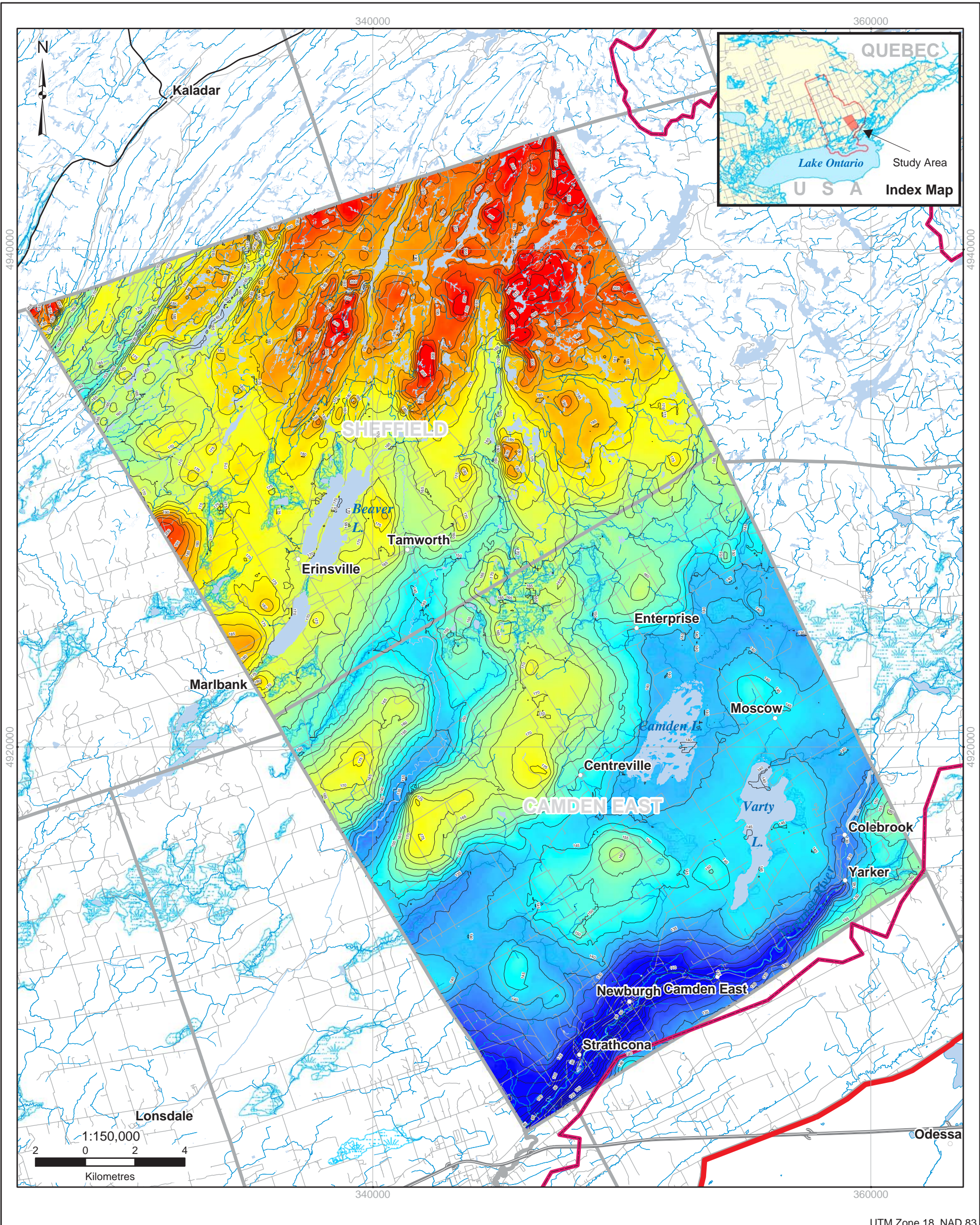
Agricultural Watersheds Associates

PEC-1: County of Prince Edward Water Table Map

Quinte Regional Groundwater Study

C:\Projects\2003\031-119004_Quinte\GIS\MXDs\County_Prince_Edward_waterable.mxd

UTM Zone 18, NAD 83



Digital Mapping Sources:
 Base Mapping Features - CANMAP v5.0,
 MOE NRVIS data

Disclaimer: Only georeferenced data provided at the time of the report is shown. Both georeferenced and non-georeferenced data is in the digital database. The completeness and positional accuracy of the plotted data is variable. Some locations may appear in duplicate. The map should only be interpreted in conjunction with the accompanying written report.

Date: August 2004 © 2004 Queen's Printer for Ontario

in association with

Legend

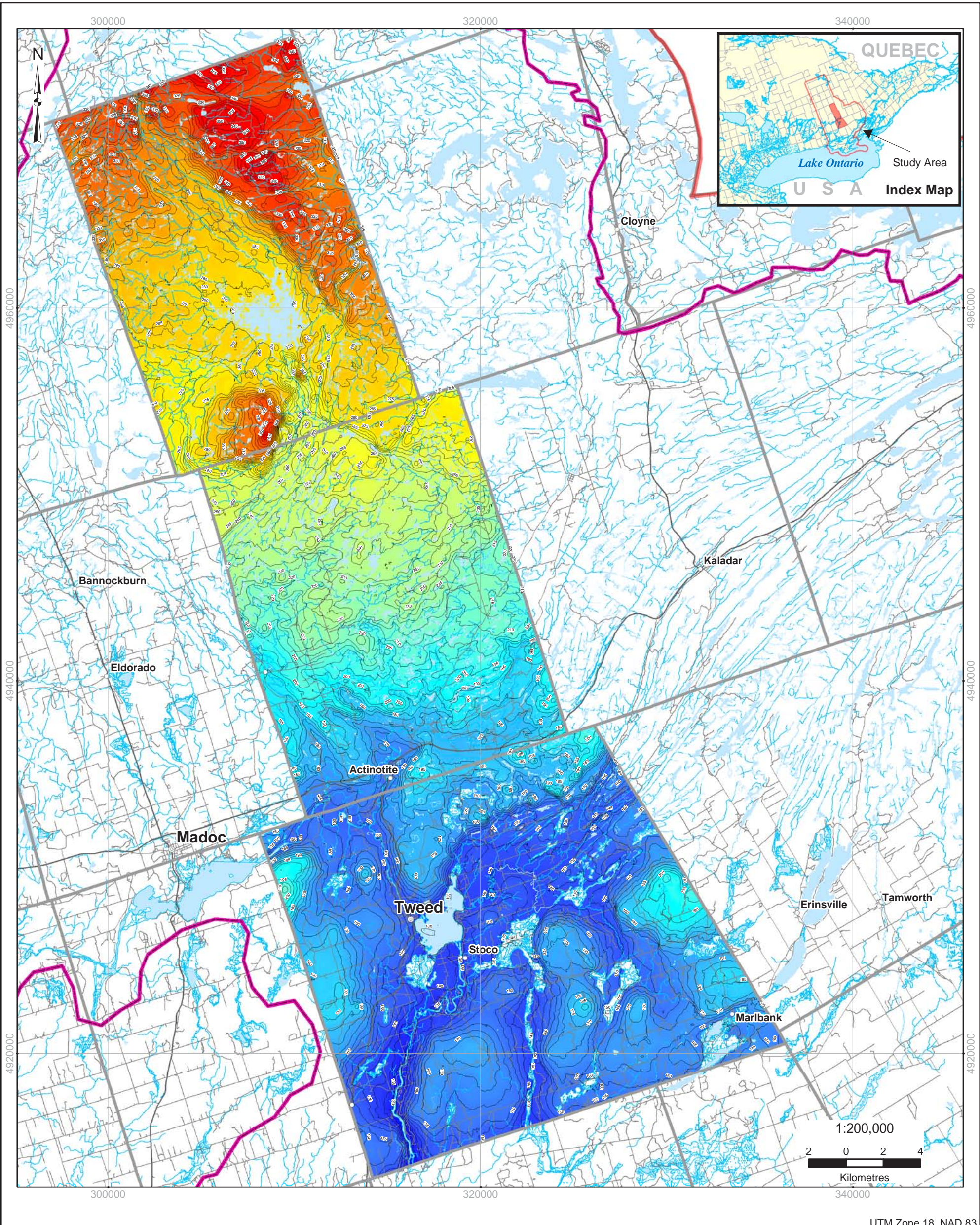
- ⊙ Major Population Centres
- Communities
- Contours - 5m Interval
- Expressways
- Highways
- Rivers
- Lakes
- Wetlands
- ▭ Study Area Boundary
- ▭ Quinte Conservation Watershed
- Water Table (masl)
- High : 225
- Low : 80

masl: Metres above sea level

Township of Stone Mills Water Table Map
Quinte Regional Groundwater Study

STN-1

G:\Projects\2003\031-119004_Quinte\GIS\MXDs\Township_of_StoneMills_waterable.mxd



UTM Zone 18, NAD 83

Digital Mapping Sources:
 Base Mapping Features - CANMAP v5.0,
 MOE NRVIS data

Disclaimer: Only georeferenced data provided at the time of the report is shown. Both georeferenced and non-georeferenced data is in the digital database. The completeness and positional accuracy of the plotted data is variable. Some locations may appear in duplicate. The map should only be interpreted in conjunction with the accompanying written report.

Date: August 2004 © 2004 Queen's Printer for Ontario

Legend

- ⊙ Major Population Centres
- Communities
- Contours - 5m Interval
- Expressways
- Highways
- Rivers
- Lakes
- Wetlands
- ▭ Study Area Boundary
- ▭ Quinte Conservation Watershed
- Water Table (masl)
 - High : 370
 - Low : 125

in association with

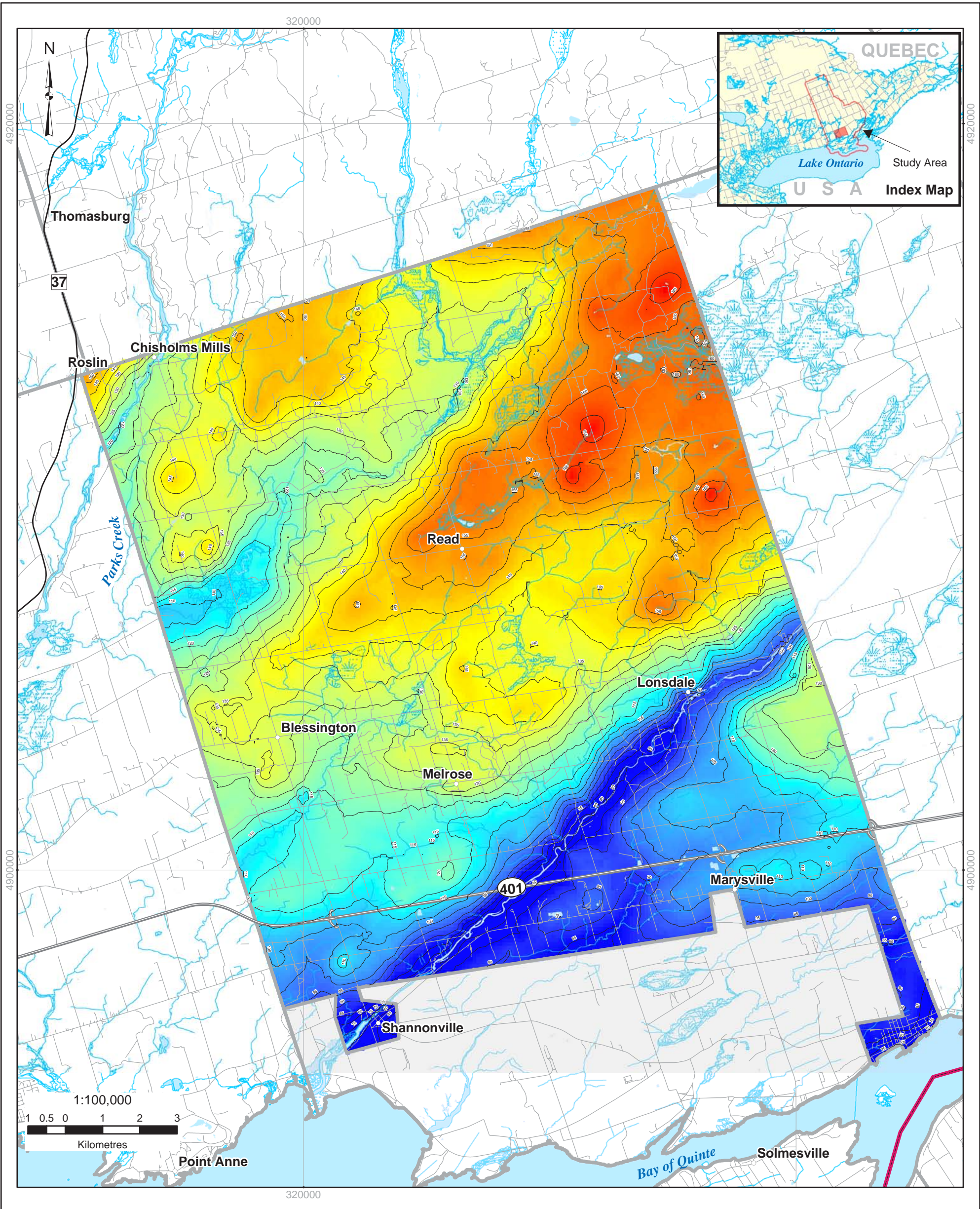
Ainley
 Agricultural Watersheds Associates

Municipality of Tweed Water Table Map
Quinte Regional Groundwater Study

masl: Metres above sea level

TWD-1

G:\Projects\2003\031-119004_Quinte\GIS\MXD\Municipality_of_Tweed_waterable.mxd



UTM Zone 18, NAD 83

Digital Mapping Sources:
 Base Mapping Features - CANMAP v5.0,
 MOE NRVIS data

Disclaimer: Only georeferenced data provided at the time of the report is shown. Both georeferenced and non-georeferenced data is in the digital database. The completeness and positional accuracy of the plotted data is variable. Some locations may appear in duplicate. The map should only be interpreted in conjunction with the accompanying written report.

Date: August 2004 © 2004 Queen's Printer for Ontario

Legend

- Communities
- Contours - 5m Interval
- Expressways
- Highways
- Rivers
- Lakes
- Wetlands
- Quinte Conservation Watershed
- Study Area Boundary
- First Nations
- Water Table (masl)
- High : 170
- Low : 75

masl: Metres above sea level

in association with
 Agricultural Watersheds Associates

Township of Tyendinaga Water Table Map
Quinte Regional Groundwater Study

TYND-1

G:\Projects\2003\031-119004_Quinte\GIS\MXDs\Township_of_Tyendinaga_waterable.mxd