

# Potter Creek Watershed Boundary

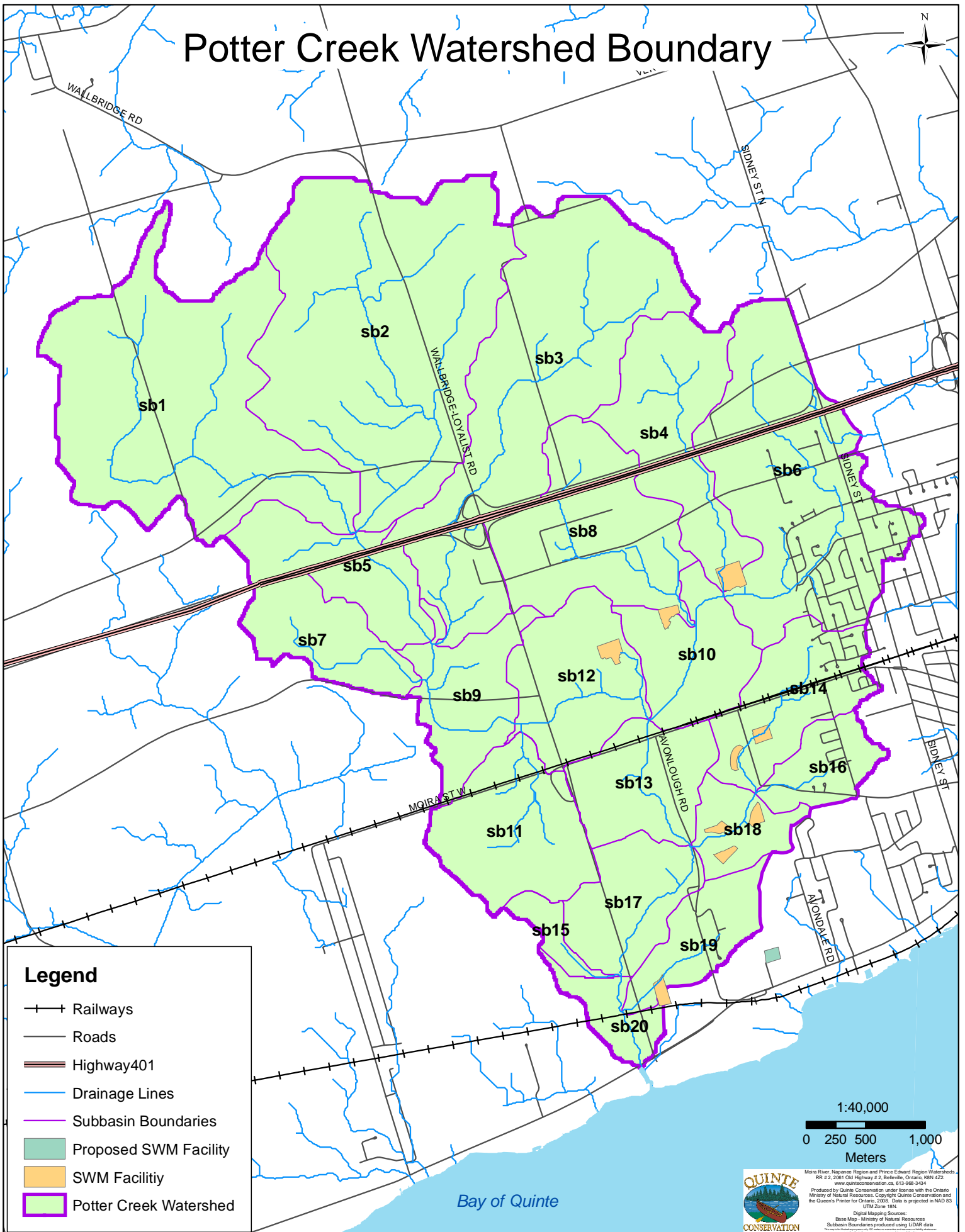


Figure 1

DRAFT

1:40,000  
0 250 500 1,000  
Meters

QUINTE CONSERVATION  
Mora River, Napanee Region and Prince Edward Region Watersheds  
RR # 2, 2081 Old Highway # 2, Belleville, Ontario, K0N 4Z2  
www.quintecconservation.ca, 613-998-3434  
Produced by Quinte Conservation under license with the Ontario  
Ministry of Natural Resources. Copyright Quinte Conservation and  
the Queen's Printer for Ontario, 2008. Data is projected in NAD 83  
UTM Zone 18N.  
Digital Mapping Source:  
Base Map - Ministry of Natural Resources  
Subbasin Boundaries produced using LIDAR data

# Potter Creek Watershed Proposed Land Use

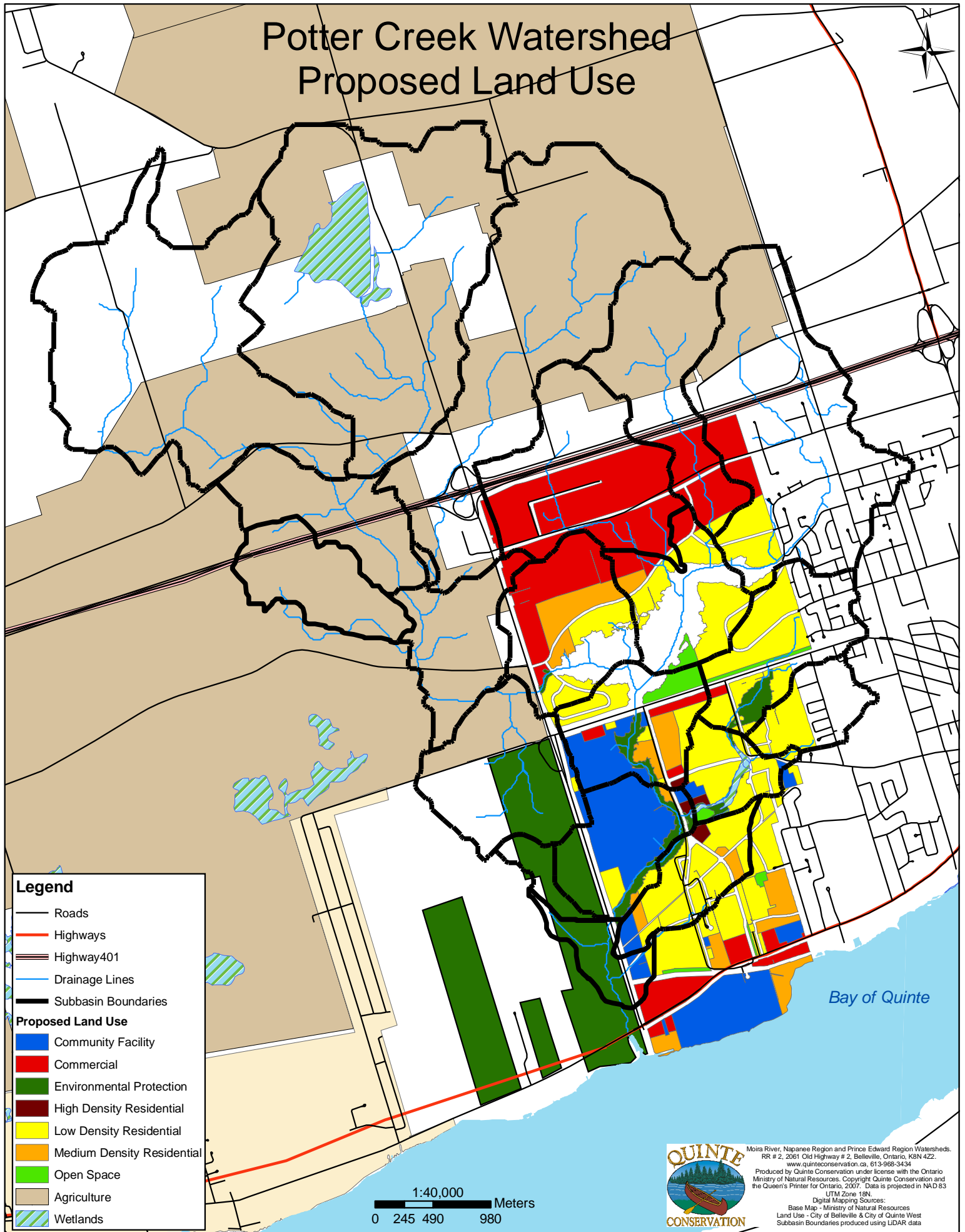
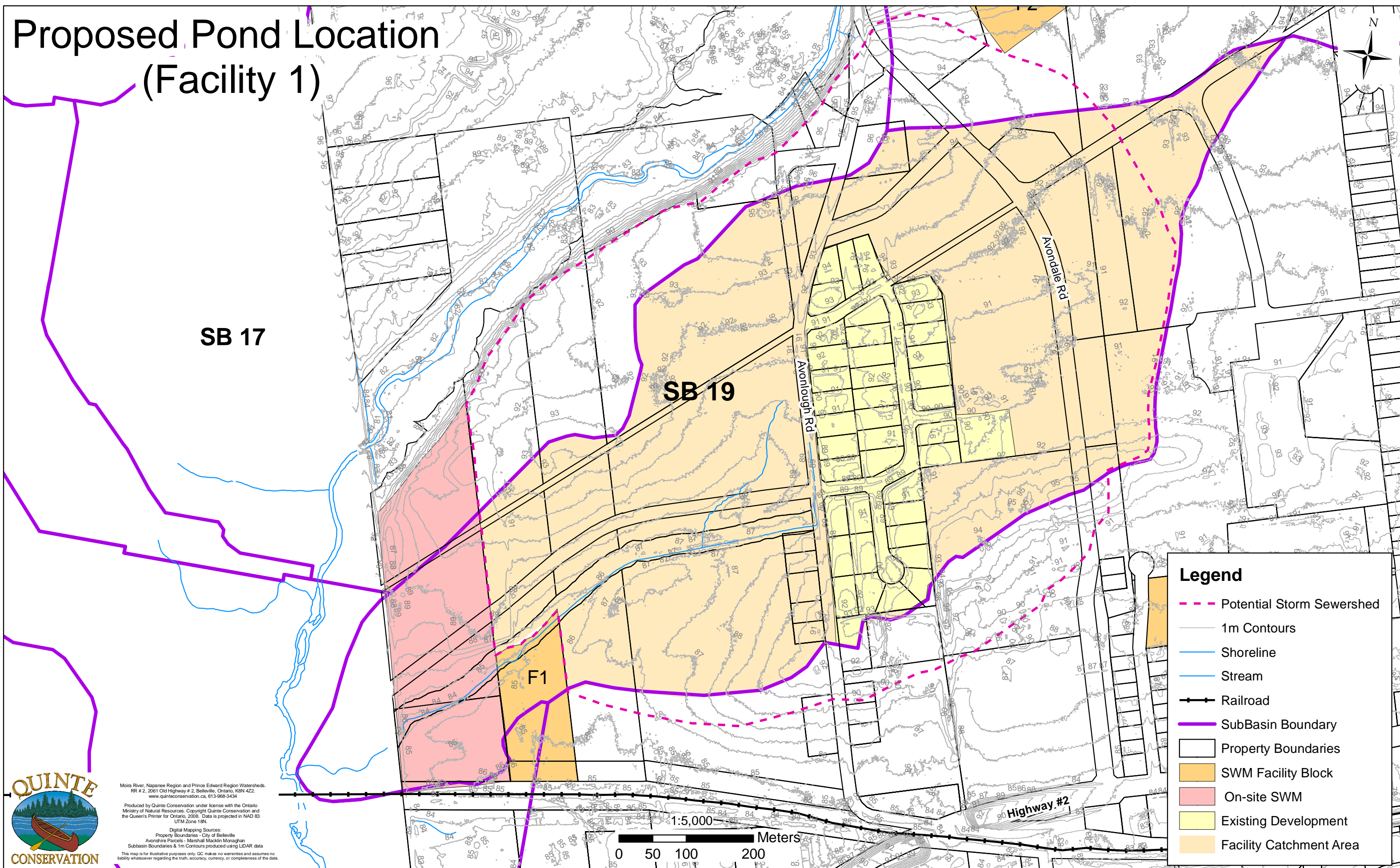


Figure 2

DRAFT



# Proposed Pond Location (Facility 1)



**Legend**

- - - Potential Storm Sewershed
- 1m Contours
- Shoreline
- Stream
- +— Railroad
- SubBasin Boundary
- Property Boundaries
- SWM Facility Block
- On-site SWM
- Existing Development
- Facility Catchment Area



Moira River, Napanee Region and Prince Edward Region Watersheds.  
RR # 2, 2061 Old Highway # 2, Belleville, Ontario, K8N 4Z2.  
www.quinteconservation.ca, 613-969-3434

Produced by Quinte Conservation under license with the Ontario Ministry of Natural Resources. Copyright Quinte Conservation and the Queen's Printer for Ontario, 2009. Data is projected in NAD 83 UTM Zone 18N.

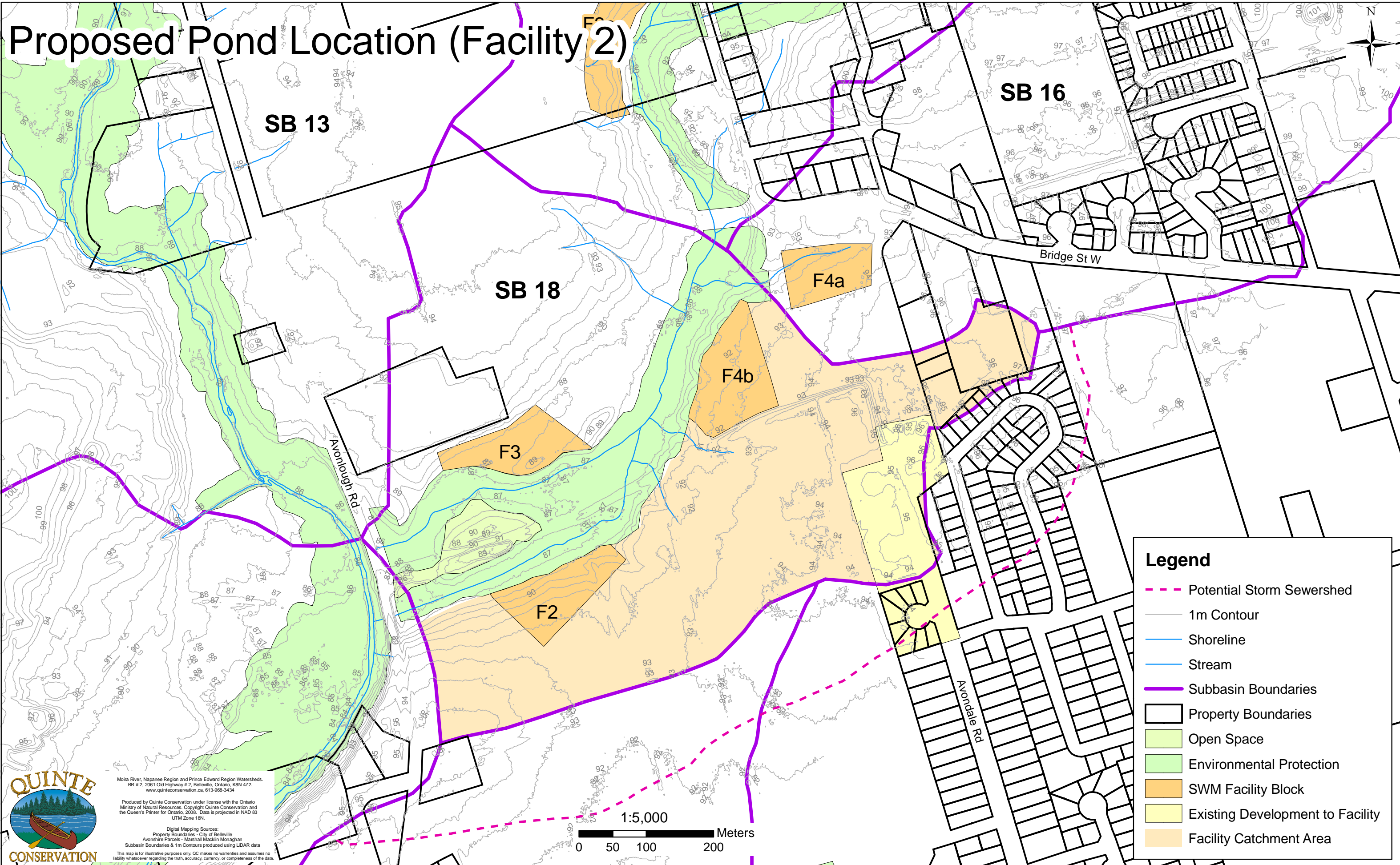
Digital Mapping Sources:  
Property Boundaries - City of Belleville  
Avonshire Parcels - Marshall Macklin Monaghan  
Subbasin Boundaries & 1m Contours produced using LIDAR data

This map is for illustrative purposes only. QC makes no warranties and assumes no liability whatsoever regarding the truth, accuracy, currency, or completeness of the data.

**Figure F.1**

**DRAFT**





**QUINTE CONSERVATION**

Moirs River, Napanee Region and Prince Edward Region Watersheds,  
RR # 2, 2061 Old Highway # 2, Belleville, Ontario, K8N 4Z2.  
www.quintecconservation.ca, 613-968-3434

Produced by Quinte Conservation under license with the Ontario  
Ministry of Natural Resources. Copyright Quinte Conservation and  
the Queen's Printer for Ontario, 2008. Data is projected in NAD 83  
UTM Zone 18N.

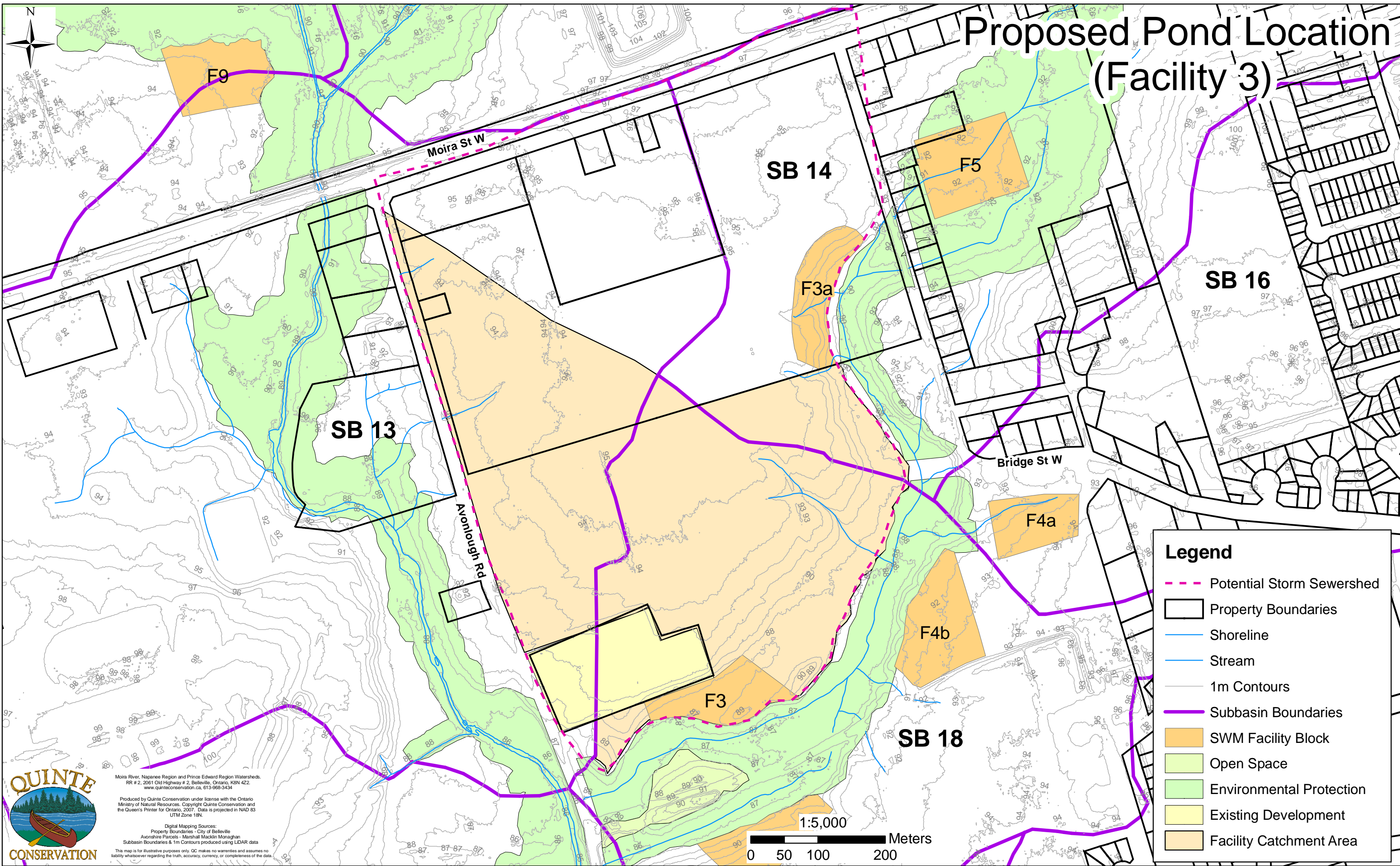
Digital Mapping Sources:  
Property Boundaries - City of Belleville  
Avonshire Parcels - Marshall Macklin Monaghan  
Subbasin Boundaries & 1m Contours produced using LIDAR data

This map is for illustrative purposes only. QC makes no warranties and assumes no  
liability whatsoever regarding the truth, accuracy, currency, or completeness of the data.

**Figure F.2**

**DRAFT**





**Figure F.3**

**DRAFT**

**QUINTE CONSERVATION**

Moira River, Napanee Region and Prince Edward Region Watersheds.  
RR # 2, 2061 Old Highway # 2, Belleville, Ontario, K8N 4Z2.  
www.quinticonservation.ca, 613-968-3434

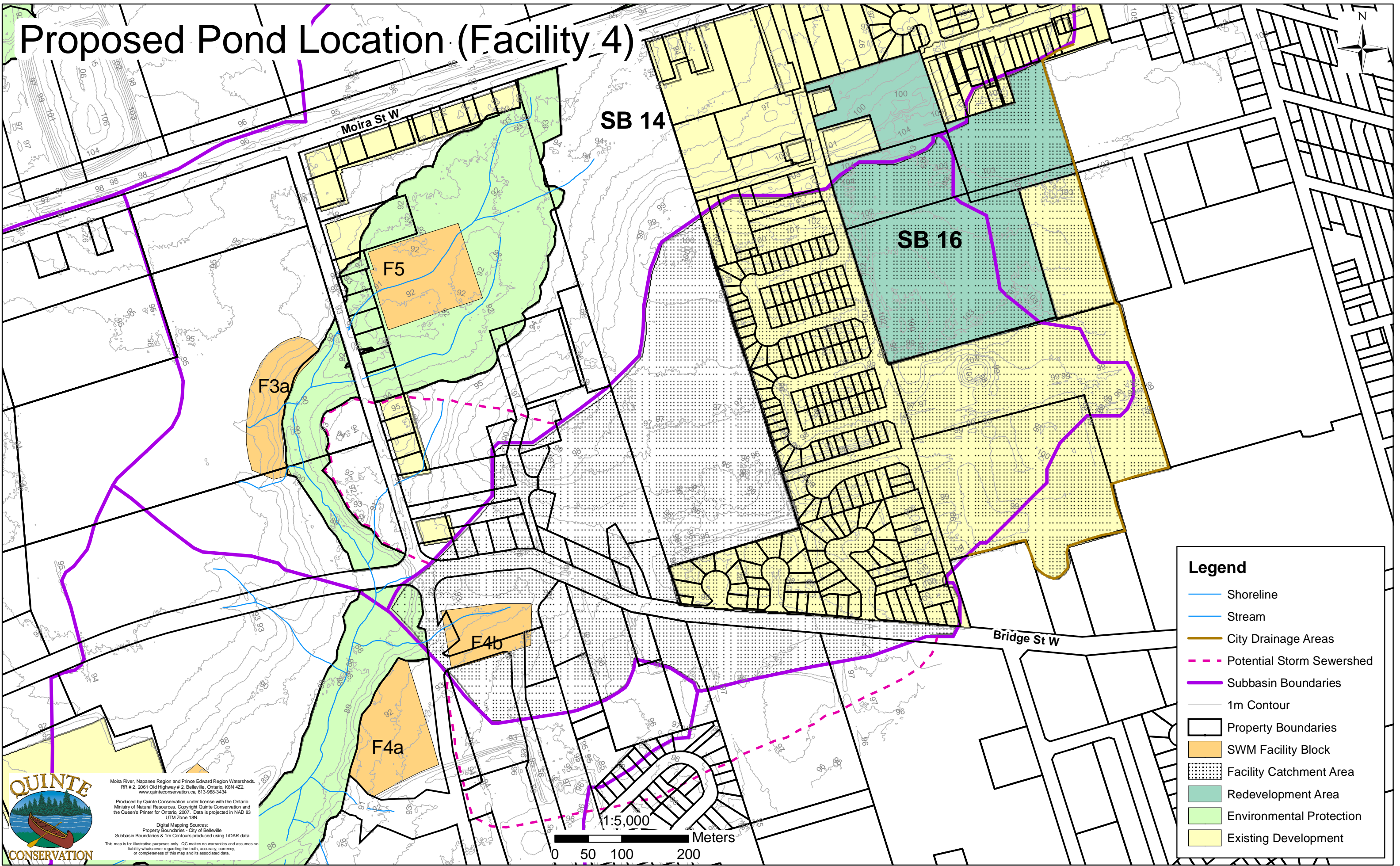
Produced by Quinte Conservation under license with the Ontario Ministry of Natural Resources. Copyright Quinte Conservation and the Queen's Printer for Ontario, 2007. Data is projected in NAD 83 UTM Zone 18N.

Digital Mapping Sources:  
Property Boundaries - City of Belleville  
Avonshire Parcels - Marshall Macklin Monaghan  
Subbasin Boundaries & 1m Contours produced using LIDAR data

This map is for illustrative purposes only. QC makes no warranties and assumes no liability whatsoever regarding the truth, accuracy, currency, or completeness of the data.



# Proposed Pond Location (Facility 4)



**Legend**

- Shoreline
- Stream
- City Drainage Areas
- Potential Storm Sewershed
- Subbasin Boundaries
- 1m Contour
- Property Boundaries
- SWM Facility Block
- Facility Catchment Area
- Redevelopment Area
- Environmental Protection
- Existing Development

Moira River, Napanee Region and Prince Edward Region Watersheds.  
 RR # 2, 2061 Old Highway # 2, Belleville, Ontario, K8N 4Z2.  
 www.quintecconservation.ca, 613-968-3434

Produced by Quinte Conservation under license with the Ontario Ministry of Natural Resources. Copyright Quinte Conservation and the Queen's Printer for Ontario, 2007. Data is projected in NAD 83 UTM Zone 18N.

Digital Mapping Sources:  
 Property Boundaries - City of Belleville  
 Subbasin Boundaries & 1m Contours produced using LIDAR data

This map is for illustrative purposes only. QC makes no warranties and assumes no liability whatsoever regarding the truth, accuracy, currency, or completeness of this map and its associated data.

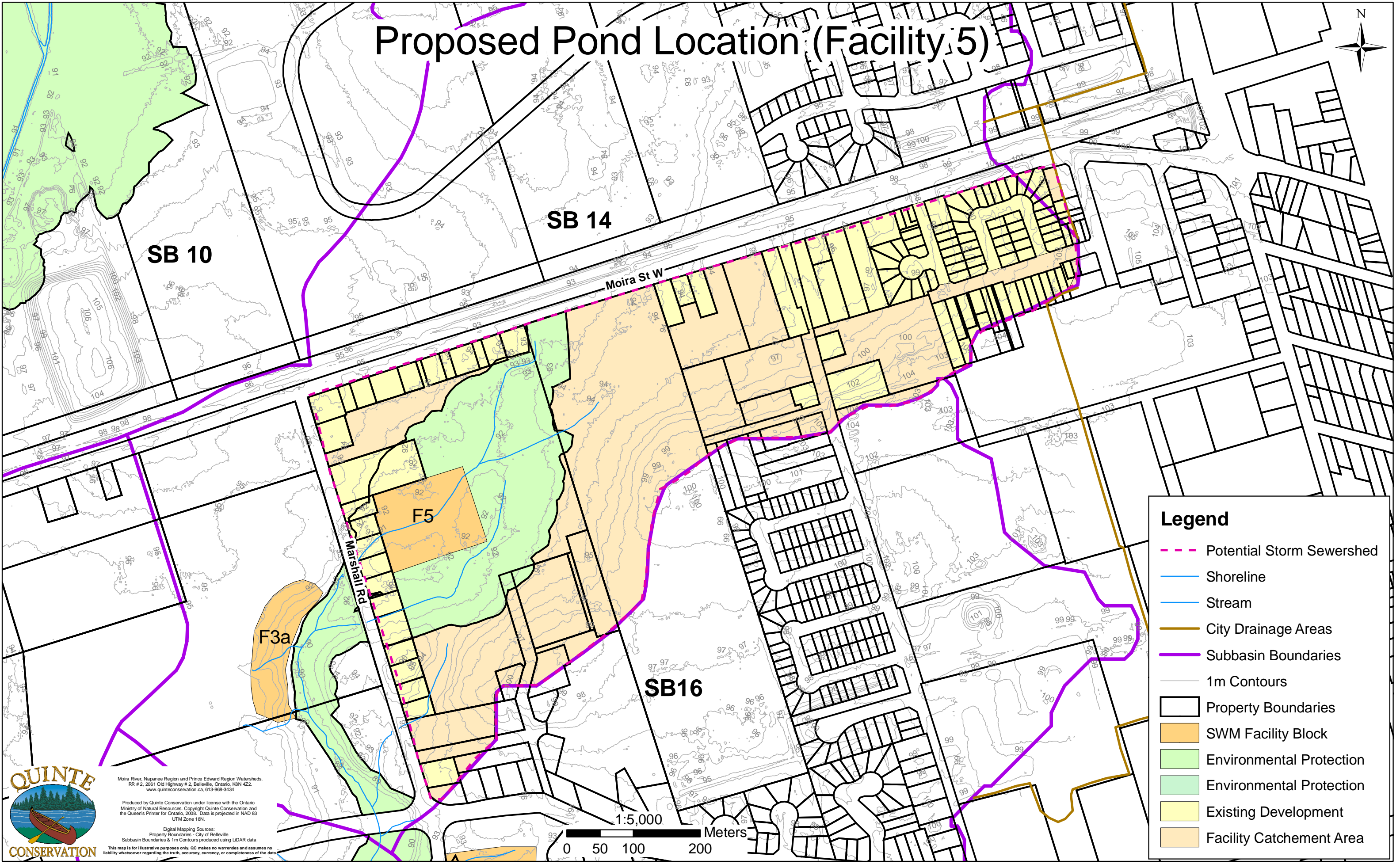
1:5,000  
 0 50 100 200 Meters

**Figure F.4**

**DRAFT**



# Proposed Pond Location (Facility 5)



**Legend**

- Potential Storm Sewershed
- Shoreline
- Stream
- City Drainage Areas
- Subbasin Boundaries
- 1m Contours
- Property Boundaries
- SWM Facility Block
- Environmental Protection
- Environmental Protection
- Existing Development
- Facility Catchment Area

**QUINTE CONSERVATION**

Moira River, Napanee Region and Prince Edward Region Watersheds.  
 RR # 2, 2061 Old Highway # 2, Belleville, Ontario, K8N 4Z2.  
 www.quintecconservation.ca, 613-968-3434

Produced by Quinte Conservation under license with the Ontario Ministry of Natural Resources. Copyright Quinte Conservation and the Queen's Printer for Ontario, 2008. Data is projected in NAD 83 UTM Zone 18N.

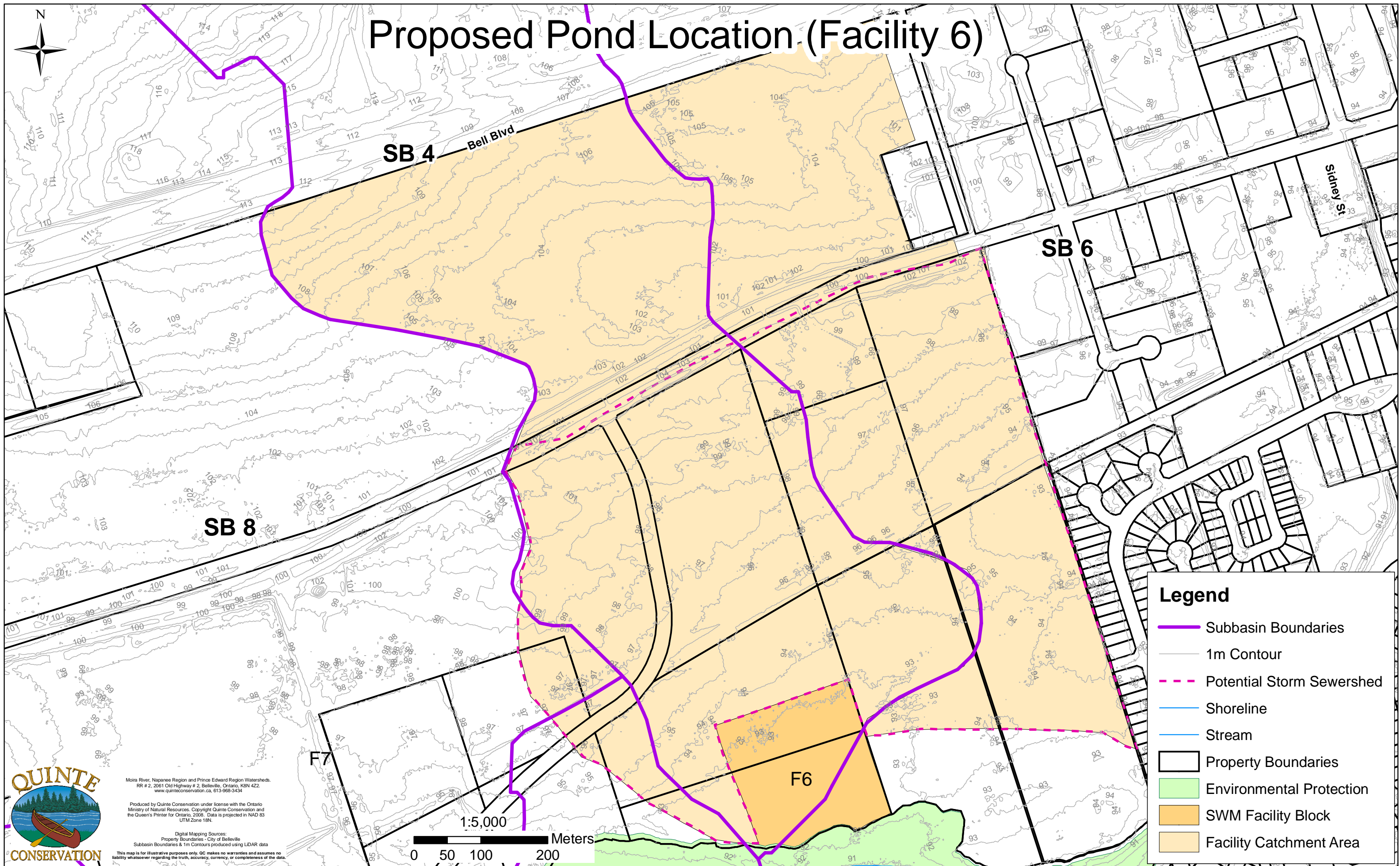
Digital Mapping Sources:  
 Property Boundaries - City of Belleville  
 Subbasin Boundaries & 1m Contours produced using LIDAR data

This map is for illustrative purposes only. QC makes no warranties and assumes no liability whatsoever regarding the truth, accuracy, currency, or completeness of the data.

**Figure F.5**

**DRAFT**





**Legend**

- Subbasin Boundaries
- 1m Contour
- Potential Storm Sewershed
- Shoreline
- Stream
- Property Boundaries
- Environmental Protection
- SWM Facility Block
- Facility Catchment Area

**QUINTE CONSERVATION**

Moira River, Napanee Region and Prince Edward Region Watersheds.  
 RR # 2, 2061 Old Highway # 2, Belleville, Ontario, K8N 4Z2  
 www.quinteconservation.ca, 613-968-3434

Produced by Quinte Conservation under license with the Ontario Ministry of Natural Resources. Copyright Quinte Conservation and the Queen's Printer for Ontario, 2008. Data is projected in NAD 83 UTM Zone 18N.

Digital Mapping Sources:  
 Property Boundaries - City of Belleville  
 Subbasin Boundaries & 1m Contours produced using LIDAR data

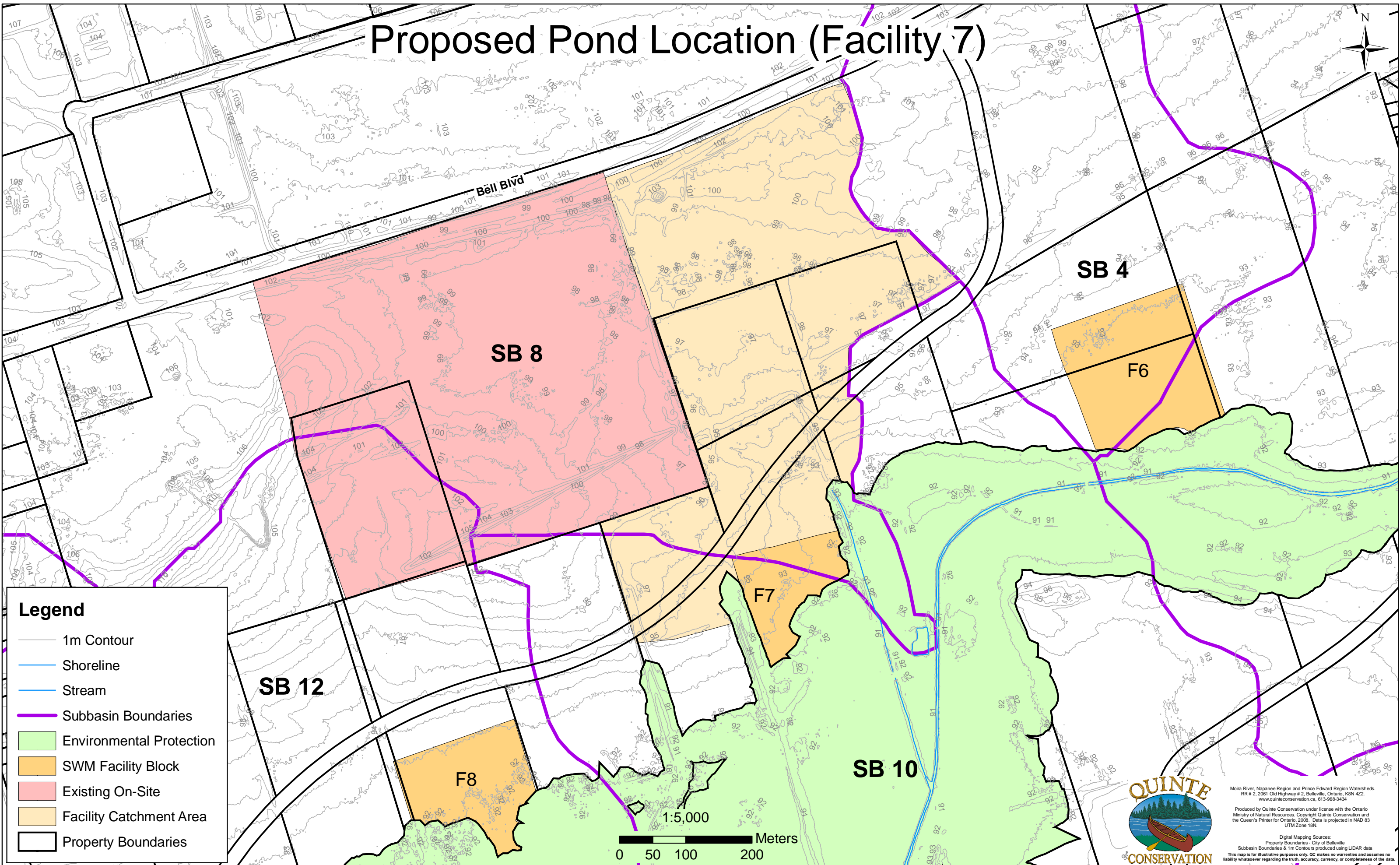
This map is for illustrative purposes only. QC makes no warranties and assumes no liability whatsoever regarding the truth, accuracy, currency, or completeness of the data.

**Figure F.6**

**DRAFT**



# Proposed Pond Location (Facility 7)



**Legend**

- 1m Contour
- Shoreline
- Stream
- Subbasin Boundaries
- Environmental Protection
- SWM Facility Block
- Existing On-Site
- Facility Catchment Area
- Property Boundaries



Moira River, Napanee Region and Prince Edward Region Watersheds.  
RR # 2, 2061 Old Highway # 2, Belleville, Ontario, K8N 4Z2.  
www.quinteconservation.ca, 613-968-3434

Produced by Quinte Conservation under license with the Ontario Ministry of Natural Resources. Copyright Quinte Conservation and the Queen's Printer for Ontario, 2008. Data is projected in NAD 83 UTM Zone 18N.

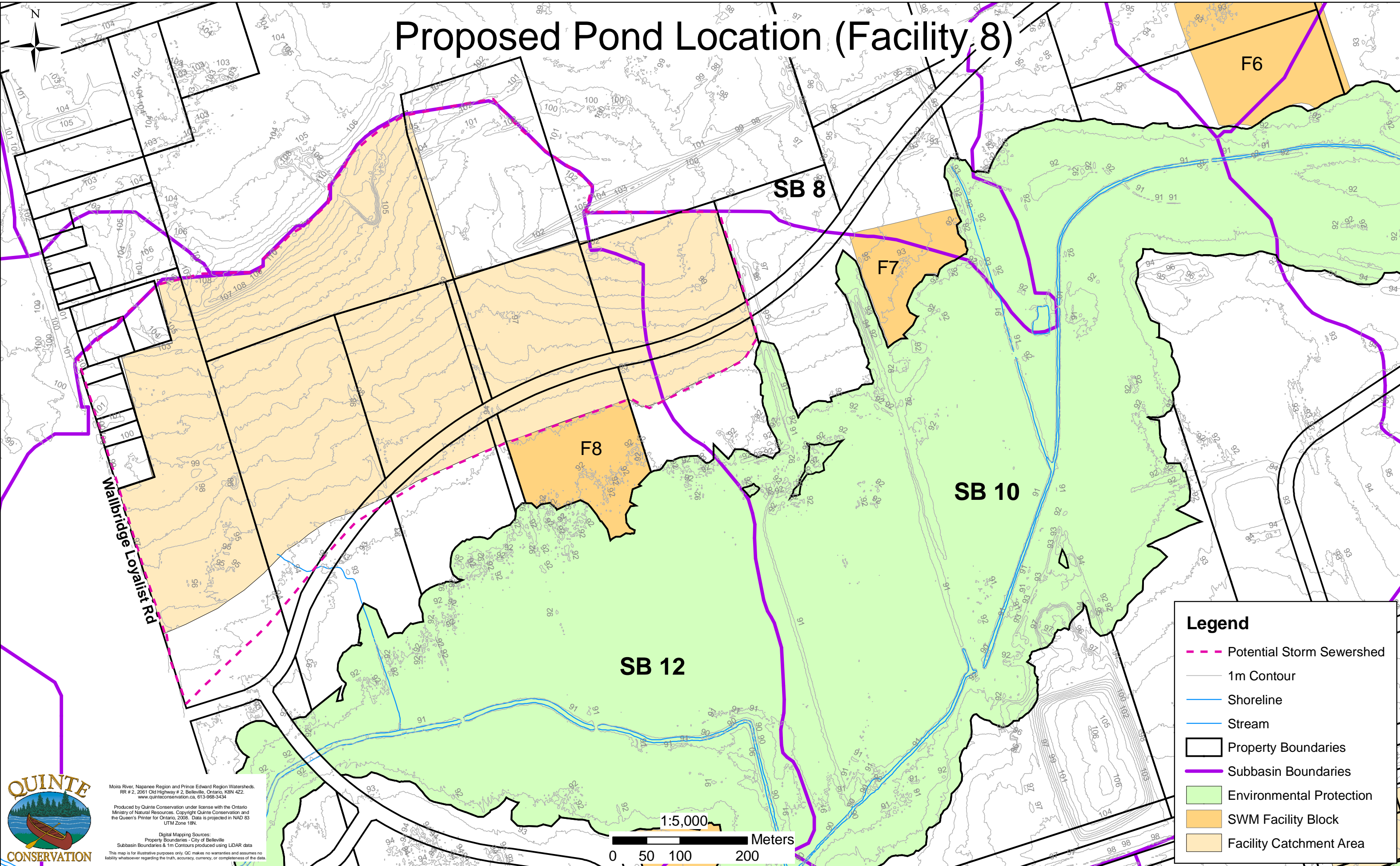
Digital Mapping Sources:  
Property Boundaries - City of Belleville  
Subbasin Boundaries & 1m Contours produced using LIDAR data  
This map is for illustrative purposes only. QC makes no warranties and assumes no liability whatsoever regarding the truth, accuracy, currency, or completeness of the data.

Figure F.7

DRAFT



# Proposed Pond Location (Facility 8)



**Legend**

- Potential Storm Sewershed
- 1m Contour
- Shoreline
- Stream
- Property Boundaries
- Subbasin Boundaries
- Environmental Protection
- SWM Facility Block
- Facility Catchment Area



Moira River, Napanee Region and Prince Edward Region Watersheds.  
 RR # 2, 2061 Old Highway # 2, Belleville, Ontario, K8N 4Z2.  
 www.quinteconservation.ca, 613-968-3434

Produced by Quinte Conservation under license with the Ontario  
 Ministry of Natural Resources. Copyright Quinte Conservation and  
 the Queen's Printer for Ontario, 2008. Data is projected in NAD 83  
 UTM Zone 18N.

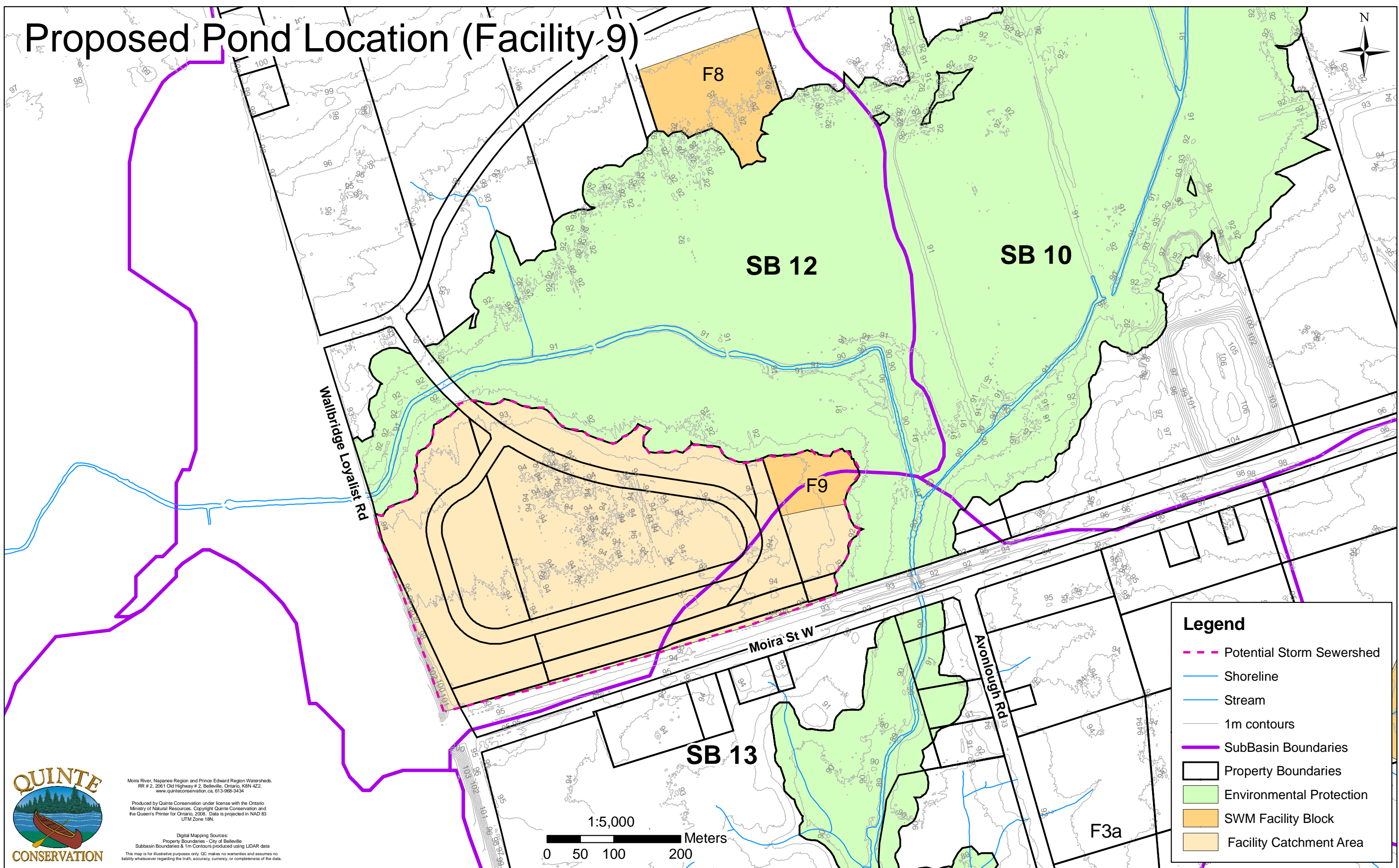
Digital Mapping Sources:  
 Property Boundaries - City of Belleville  
 Subbasin Boundaries & 1m Contours produced using LIDAR data  
 This map is for illustrative purposes only. QC makes no warranties and assumes no  
 liability whatsoever regarding the truth, accuracy, currency, or completeness of the data.

DRAFT

Figure F.8

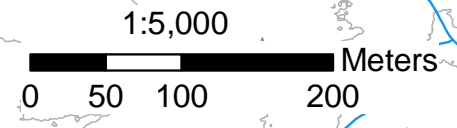


# Proposed Pond Location (Facility-9)



**Legend**

- Potential Storm Sewershed
- Shoreline
- Stream
- 1m contours
- SubBasin Boundaries
- Property Boundaries
- Environmental Protection
- SWM Facility Block
- Facility Catchment Area



**QUINTE CONSERVATION**

Moira River, Napanee Region and Prince Edward Region Watersheds.  
 RR # 2, 2061 Old Highway # 2, Belleville, Ontario, K8N 4Z2.  
 www.quintecconservation.ca, 613-968-3434

Produced by Quinte Conservation under license with the Ontario Ministry of Natural Resources. Copyright Quinte Conservation and the Queen's Printer for Ontario, 2006. Data is projected in NAD 83 UTM Zone 18N.

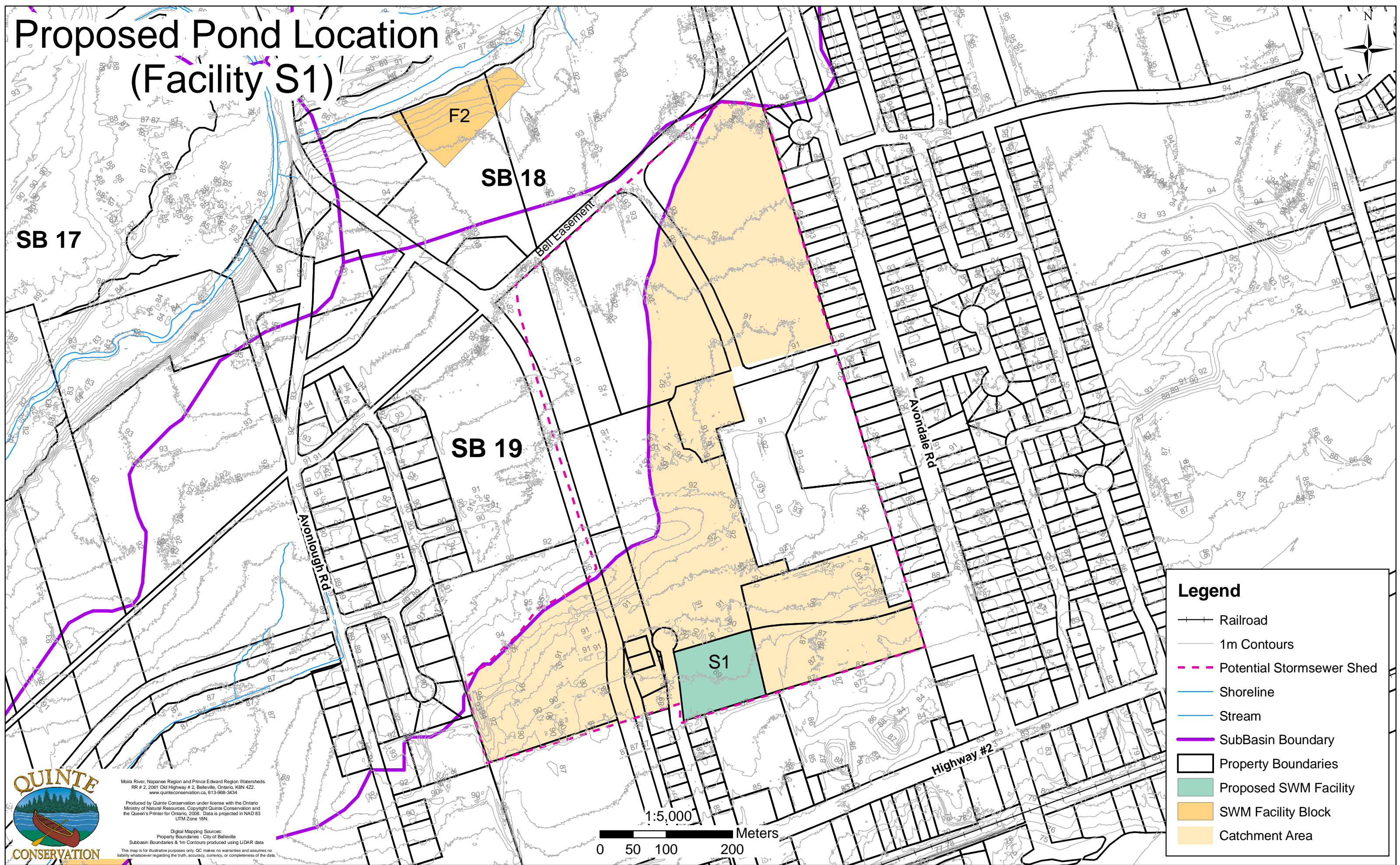
Digital Mapping Sources:  
 Property Boundaries - City of Belleville  
 Subbasin Boundaries & 1m Contours produced using LIDAR data  
 This map is for illustrative purposes only. QC makes no warranties and assumes no liability whatsoever regarding the truth, accuracy, currency, or completeness of the data.

**Figure F. 9**

**DRAFT**



# Proposed Pond Location (Facility S1)



**Legend**

- Railroad
- 1m Contours
- Potential Stormsewer Shed
- Shoreline
- Stream
- SubBasin Boundary
- Property Boundaries
- Proposed SWM Facility
- SWM Facility Block
- Catchment Area

**QUINTE CONSERVATION**

Moira River, Napanee Region and Prince Edward Region Watersheds.  
RR # 2, 2061 Old Highway # 2, Belleville, Ontario, K8N 4Z2.  
www.quinteconservation.ca, 613-968-3434

Produced by Quinte Conservation under license with the Ontario Ministry of Natural Resources. Copyright Quinte Conservation and the Queen's Printer for Ontario, 2008. Data is projected in NAD 83 UTM Zone 18N.

Digital Mapping Sources:  
Property Boundaries - City of Belleville  
Subbasin Boundaries & 1m Contours produced using LIDAR data  
This map is for illustrative purposes only. QC makes no warranties and assumes no liability whatsoever regarding the truth, accuracy, currency, or completeness of the data.

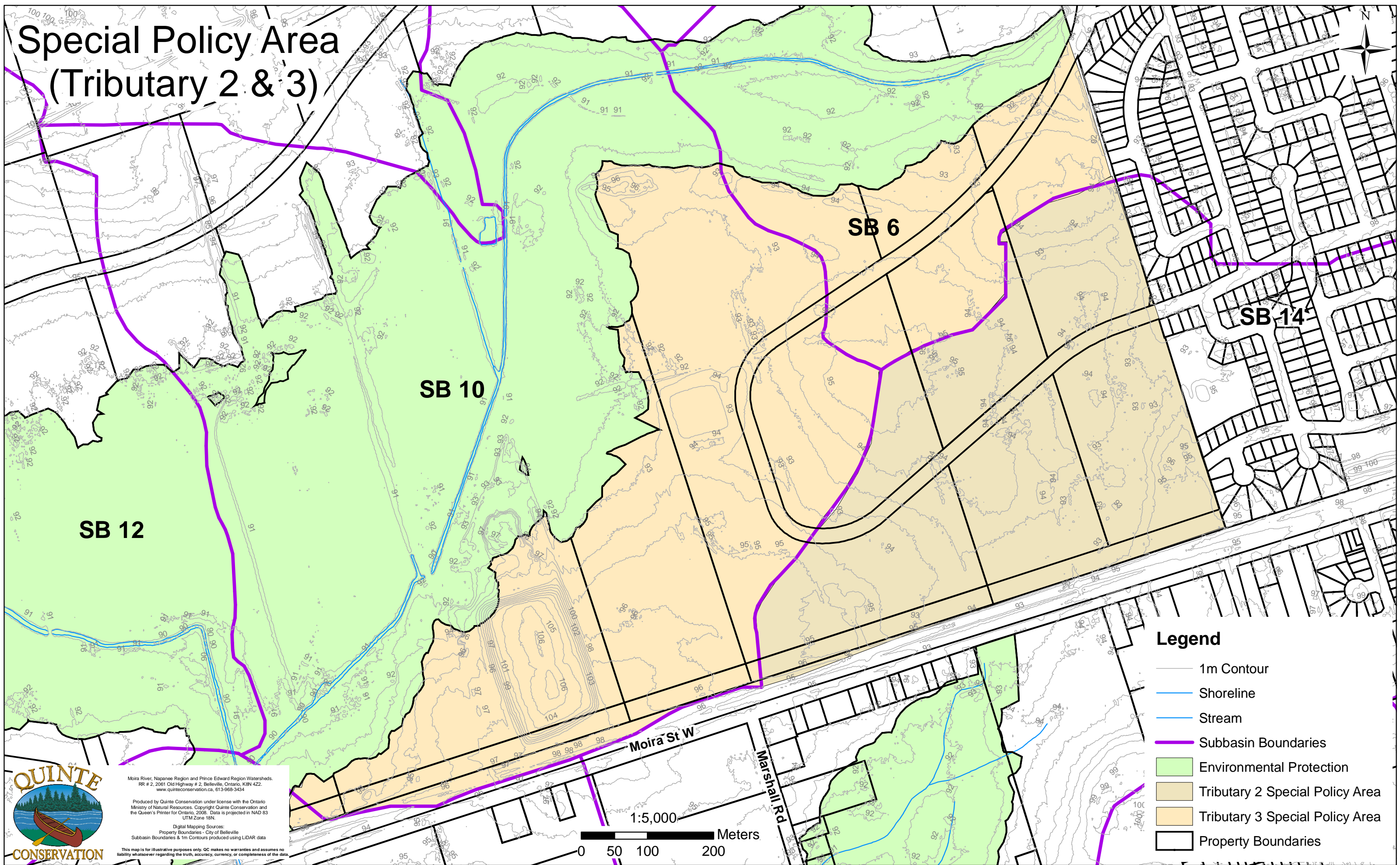
1:5,000  
0 50 100 200 Meters

**Figure S.1**

**DRAFT**



# Special Policy Area (Tributary 2 & 3)



Moira River, Napanee Region and Prince Edward Region Watersheds.  
 RR # 2, 2061 Old Highway # 2, Belleville, Ontario, K8N 4Z2.  
 www.quinteconservation.ca, 613-968-3434

Produced by Quinte Conservation under license with the Ontario  
 Ministry of Natural Resources. Copyright Quinte Conservation and  
 the Queen's Printer for Ontario, 2008. Data is projected in NAD 83  
 UTM Zone 18N.

Digital Mapping Sources:  
 Property Boundaries - City of Belleville  
 Subbasin Boundaries & 1m Contours produced using LIDAR data

This map is for illustrative purposes only. QC makes no warranties and assumes no  
 liability whatsoever regarding the truth, accuracy, currency, or completeness of the data.

- Legend**
- 1m Contour
  - Shoreline
  - Stream
  - Subbasin Boundaries
  - Environmental Protection
  - Tributary 2 Special Policy Area
  - Tributary 3 Special Policy Area
  - Property Boundaries

**Figure SP.1**

**DRAFT**