



# East Lake

**County of Prince Edward**

## **Aquatic Vegetation Report, 2021**



Quinte  
CONSERVATION

[www.QuinteConservation.ca](http://www.QuinteConservation.ca)  
[www.QuinteSourceWater.ca](http://www.QuinteSourceWater.ca)

RR#2, 2061 Old Hwy #2, Belleville, ON K8N 4Z2  
Phone: (613) 968-3434



## TABLE OF CONTENTS

Introduction	Page 3
Aquatic Vegetation, The Key to a Healthy and Vibrant Lake	Page 4
Invasive Species, A Threat To Our Natural Ecosystems	Page 5
Aquatic Vegetation Survey	Page 6
Aquatic Vegetation Survey Locations MAP	Page 7
Aquatic Vegetation Community	Page 8—10
What Can You Do To Slow The Spread	Page 11
Eurasian Water Milfoil ( <i>Myriophyllum spicatum</i> )	Page 12-13
European Frog-bit ( <i>Hydrocharis morsus-ranae</i> )	Page 14
Flowering Rush ( <i>Butomus umbellatus</i> )	Page 15
Curly Pondweed ( <i>Potamogeton crispus</i> )	Page 16
European Common Reed/Invasive Phragmites ( <i>Phragmites australis</i> )	Page 17-18
Starry Stonewort ( <i>Nitellopsis obtusa</i> )	Page 19
Water Solider ( <i>Stratioties aloides</i> )	Page 20
European Water Chestnut ( <i>Trapa natans</i> )	Page 21
Invasive Species Watch List	Page 22
Invasive Species ACT 2015	Page 23
Aquatic & Wetland Species at Risk	Page 24
Stewardship Recommendations and Landowner Programs	Page 25
Resources	Page 26



East Lake is the second largest lake in Prince Edward County. The shoreline of the lake consists of active farms along the northern shore and more dense residential, cottage, and resort commercial development along the southern shore.

Quinte Conservation completed an [East Lake State of Lake \(2013\)](#) study and report in 2013 followed by an [East Lake Stewardship Plan \(2015\)](#). Continued monitoring of lake health, including aquatic invasive species, is noted as an action in the Stewardship Plan. Overall East Lake was determined to have a “healthy” natural environment. East Lake is categorized as a “mesotrophic” lake, which means that, in a healthy state, and that it contains a moderate level of nutrients and plant growth. Its water quality and that of the streams flowing into the lake fall within the provincial water quality objectives. The abundant wetland areas and natural habitats were found in a good natural state, and harbour healthy populations of diverse animal species.

Shoreline development, tourism, and recreation pressures can have impacts on the health of the Lake. In 2021, East Lake was home to a number of federally and provincially identified species at risk, such as the Pugnose shiner (*Notropis anogenus*). Monitoring of invasive species and slowing their spread is imperative to protecting the natural ecology of the lake and the species it is home to.

Quinte Conservation completed an aquatic vegetation survey in the summer of 2021 to capture a snapshot of the vegetation community present and to identify invasive species that pose a threat to the natural ecology of the Bay. This document will present the findings of that survey, as well as recommended (2021) best management practices.





## **AQUATIC VEGETATION, THE KEY TO A HEALTHY AND VIBRANT LAKE**

Aquatic plants, often dismissed as “weeds”, are an essential part of a lake ecosystem.

Aquatic plants:

- ⇒ Support rich and diverse fish and wildlife populations.
- ⇒ Produce oxygen that supports aquatic life.
- ⇒ Provide food, shelter, and nesting areas for fish, wildlife, and invertebrates.
- ⇒ Absorb excess nutrients which can prevent algal blooms from occurring.
- ⇒ Hold the lake-bottom sediment in place. When plants are removed, wave action can disturb and move sediment damaging fish habitat and clouding the water.

**Nutrients promote plant growth. High levels of nutrients promote excess plant growth and can lead to algal blooms.**

Caution should be taken to avoid any additional amounts of phosphorus from entering the water in order to maintain nutrient levels within a healthy range.

**To help maintain healthy nutrient levels, efforts should be taken to:**

- ⇒ Naturalize shores to remove excess nutrients from entering the water.
- ⇒ Ensure septic tanks are pumped regularly and maintained.
- ⇒ Minimize fertilizer applications to lawns.
- ⇒ Work alongside the agricultural community to implement best management strategies for reducing excess phosphorus loading into the water systems, such as retaining a natural buffer along the shore, fencing livestock out of water systems, and optimizing fertilizer use on agricultural fields through soil testing programs.



## **INVASIVE SPECIES, A THREAT TO OUR NATURAL ECOSYSTEMS**

An **INVASIVE SPECIES** is a plant, animal, or microorganism introduced to an area outside of its normal range and it lacks natural controls such as predators and disease, allowing it to spread and displace native plants and animals. These non-native species can negatively impact native biodiversity, the economy, and society (Environment Canada, 2004).

Invasive species pose a serious threat to Ontario's economy and natural environment. Invasive species provide little benefit to our local ecosystem and are recognized as one of the greatest threats to biodiversity, second only to habitat loss.

The healthiest of ecosystems contain a rich and diverse population of native species.

## **AQUATIC, NON-NATIVE AND INVASIVE PLANTS**

Invasive species are most often brought in through human activity. A large contributor of Invasive aquatic plants is through the movement of boats between water bodies. Invasive plants can also escape from backyard ponds and gardens into our natural environment.

Invasive aquatic plants can be free floating, floating and rooted in sediment, rooted and submergent (underwater), or emergent (partly under and partly above the water's surface).

Invasive aquatic plants can affect recreational activities (e.g., boating, fishing, swimming), displace native vegetation, slow down water flow, and alter oxygen levels, all the while impacting populations of native plants and animals.



## AQUATIC VEGETATION SURVEY (2021)

Submerged Aquatic Vegetation (SAV) surveys took place in the summer of 2021. Three separate zones were surveyed across East Lake and within each zone, 60 randomized sampling locations were surveyed for vegetation species and percent coverage. *See Map 1 for survey locations.*

Complementary to the SAV surveys, Quinte Conservation staff sampled for turbidity/clarity, water depth, sediment depth and type. Turbidity is the measurement of the amount of light that is scattered by material in the water. Particles suspended or dissolved in water scatter the light making the water appear cloudy. Varied factors cause turbidity in water such as sediments, algae, organic material, or microorganisms. Sometimes turbid waters are temporary like after a heavy rain event which causes particles to re-suspend in the waters. Higher turbidity, or reduced clarity, of the water can decrease light penetration through the water column and impair the plant community and other aquatic species, such as the at-risk Pugnose shiner. Water with low turbidity supports increased plant growth as light can penetrate deeper through the water column. Continued monitoring over-time would provide a better picture of changing water health conditions. Aquatic plants provide food and/or habitat for birds, fish, macroinvertebrates, and amphibians. A healthy aquatic plant community can help improve water quality and stabilize the sediment at the bottom of the Bay.

This aquatic vegetation survey is useful in determining a “snapshot” of the aquatic plant community. This information can be used to determine health, observe changes over time, and identify potential areas for restoration and the need for education and outreach.



*The surveys of submerged aquatic vegetation (SAV) used a random point method, within predetermined areas with SAV (i.e. Wetlands). Random points were generated before sampling. Sites were then surveyed for an inventory of SAV and their aerial coverages within 1x1 meter quadrats.*

*Plants were recorded from the surface to substrate (a 3-dimensional space) while being ranked according to the area bounded by the quadrat. This method captures the species occurrences and percent cover.*

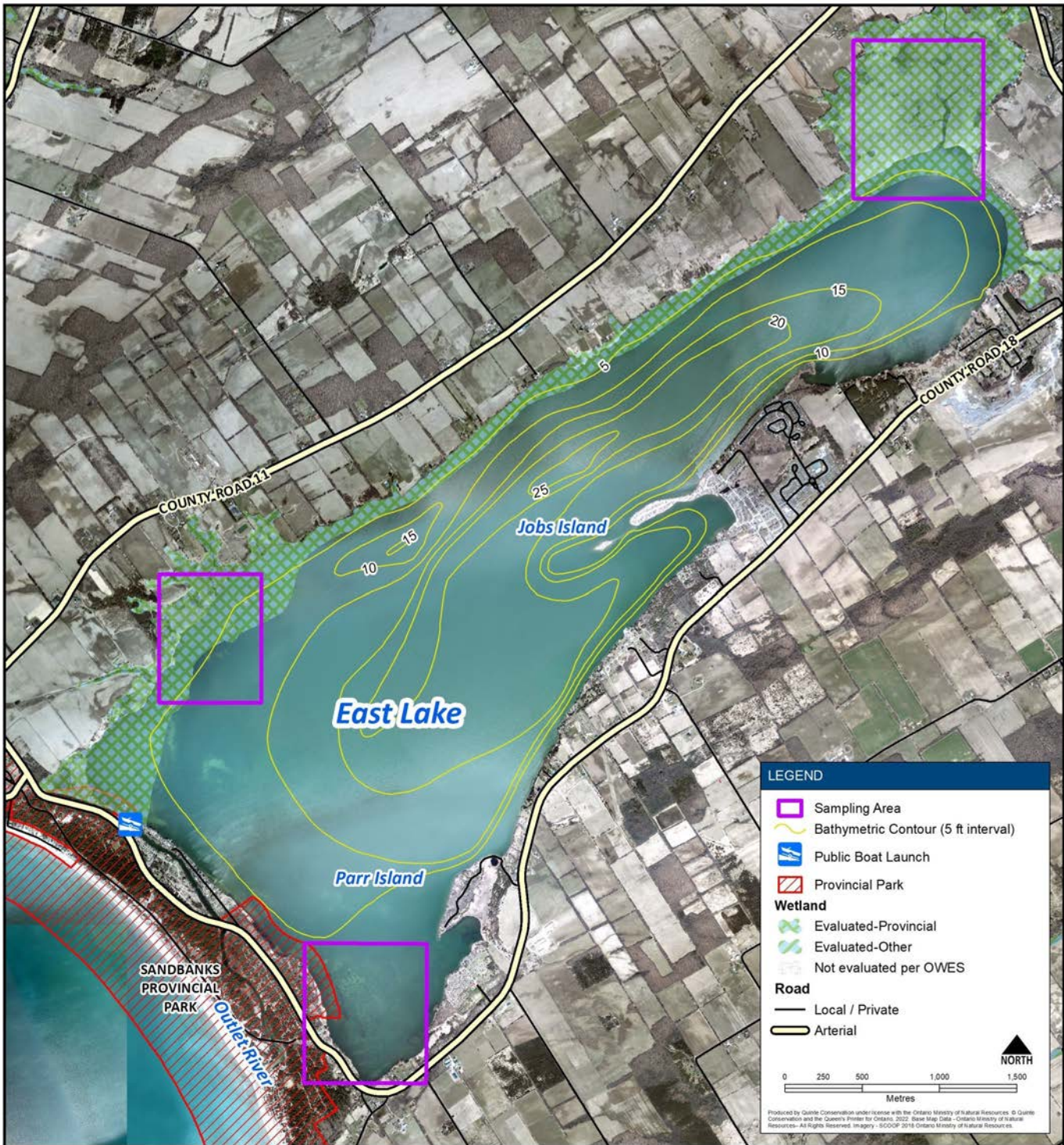
### HELP US TO LONGTERM MONITOR WATER HEALTH ON EAST LAKE

The [Lake Partner Program](#) is a province-wide, volunteer-based, water-quality monitoring program. Volunteers collect total phosphorus samples and make monthly water clarity observations on their lakes.

The [Water Rangers Program](#) offers easy-to-use water quality test kits and participants post their water data to an **open data platform** available for all to view.



**Map 1: East Lake 2021 Vegetation Survey Locations**





## AQUATIC VEGETATION COMMUNITY

The purpose of this study was to determine invasive species currently present in East Lake, and their abundance relative to native vegetation.

Four invasive aquatic plants of concern were identified in the quadrats surveyed;

- Eurasian water milfoil (*Myriophyllum spicatum*,
- Curly pondweed (*Potamogeton crispus*),
- Starry stonewort (*Nitellopsis obtuse*),
- and European frogbit (*Hydrocharis morsus-ranae*).

The most prominent invasive species found was Eurasian water milfoil, found in 36/60 (60%) of the quadrats.

In addition to those found within the quadrat surveys, staff observed three more invasive species on East Lake;

- Invasive phragmites (*Phragmites australis*),
- Purple loosestrife (*Lythrum salicaria*),
- and Flowering rush (*Butomus umbellatus*).

The points sampled were random within predetermined sampling locations and the observations do not provide a total picture of invasive species spread in the Lake, but instead a “snapshot” of the vegetation profile.

The invasive species noted in the lake have the potential to spread rapidly. Without any control measures, and with a lack of efficient natural controls, they are likely to increase in abundance.



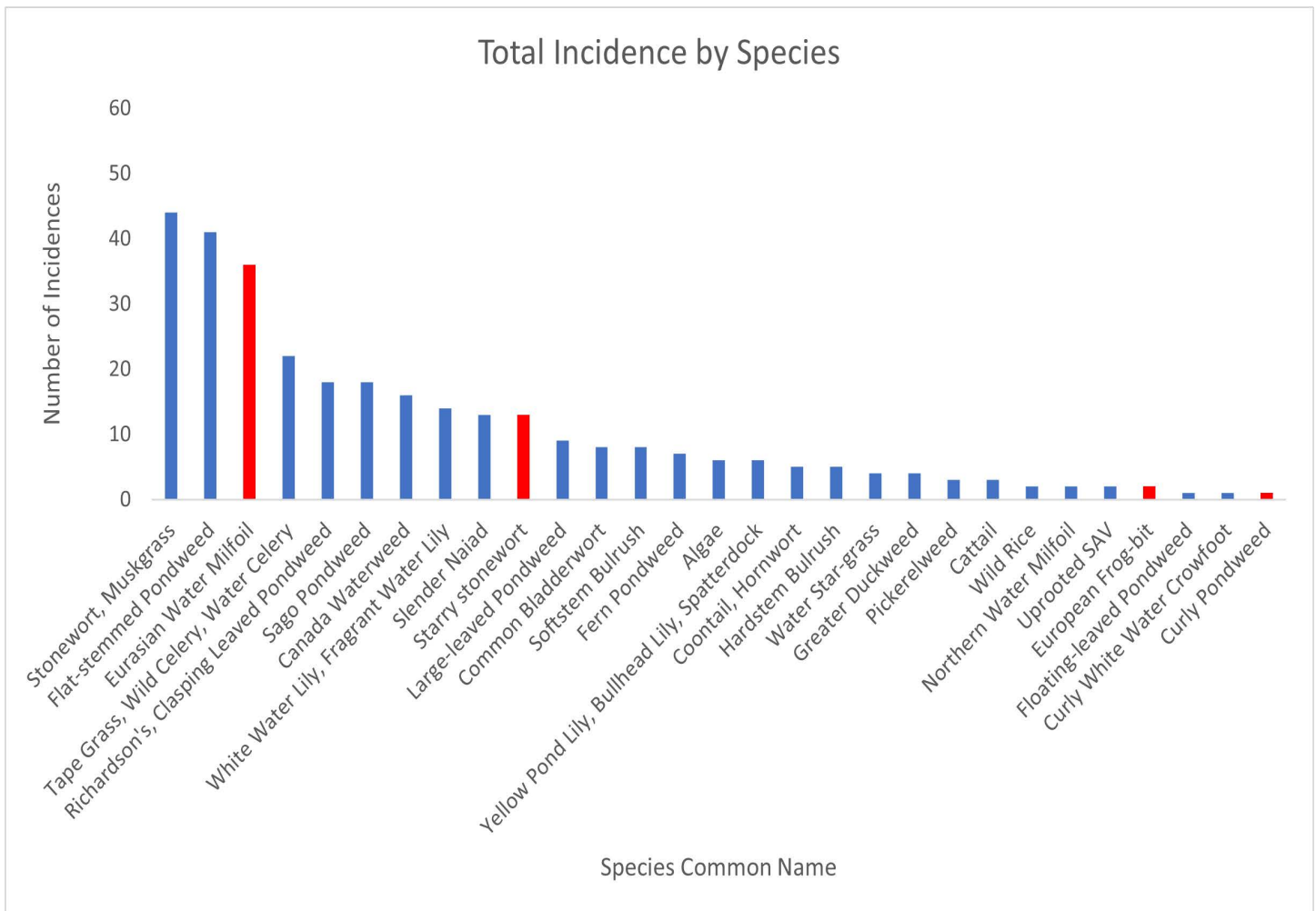


## Aquatic Vegetation Community

The figure below displays all aquatic plant species documented during the survey (2021) and the total number of quadrats they were observed in (out of 60). Documented species are ranked from most to least abundant and includes both submergent and emergent plants.

Invasive species are highlighted in red, while native species are blue.

Figure 1: Incidence of all aquatic plant species documented within surveyed quadrats, 2021.





## AQUATIC VEGETATION COMMUNITY

29 species of aquatic vegetation were inventoried within the studied quadrats, with four of the aquatic plants identified as non-native invasive plants. An additional three invasive plant species of concern were noted outside of the quadrats inventoried, Invasive phragmites (*Phragmites australis*), Purple loosestrife (*Lythrum salicaria*), and Flowering rush (*Butomus umbellatus*). Species names noted in red are invasive species.

### Submerged Aquatic Vegetation

Algae, *Algae sp*  
Canada Waterweed, *Elodea canadensis*  
Coontail/Hornwort, *Ceratophyllum demersum*  
Common Bladderwort, *Utricularia vulgaris*  
Curly leaved pondweed, *Potamogeton crispus*  
Eurasian Water Milfoil, *Myriophyllum spicatum*  
Fern Pondweed, *Potamogeton robinsii*  
Flat stemmed pondweed, *Potamogeton zosteriformis*  
Northern Watermilfoil, *Myriophyllum sibiricum*  
Richardson's Pondweed, *Potamogeton richardsonii*  
Sago Pondweed, *Potamogeton pectinatus*  
Slender Naiad, *Najas flexilis*  
Starry Stonewort, *Nitellopsis obtusa*  
Stonewort/Muskgrass, *Chara sp.*  
Tapegrass/Wild celery, *Vallisneria spiralis*  
Water Stargrass, *Heteranthera dubia*

### Emergent Aquatic Vegetation

Cattail, *Typha sp*  
Flowering rush, *Butomus umbellatus*  
Hardstem Bulrush, *Schoenoplectus acutus*  
Invasive Phragmites, *Phragmites australis*  
Pickerelweed, *Pontederia Cordata*  
Purple Loosestrife, *Lythrum salicaria*  
Softstem Bulrush, *Schoenoplectus tabernaemontani*  
Wild Rice, *Zizania palustris*

### Floating Vegetation

Canada Waterweed, *Elodia Canadensis*  
Curly White Water Crowfoot, *Ranunculus longirostris*  
European Frog-bit, *Hydrocharis morsus-ranae*  
Floating Leaved Pondweed, *Potamogeton natans*  
Greater Duckweed, *Spirodela polyrhiza*  
Large leaved pondweed, *Potamogeton amplifolius*  
White Water lily, *Nymphaea odorata*  
Yellow Pond Lily, *Nuphar lutea*



## WHAT YOU CAN DO TO SLOW THE SPREAD OF INVASIVE SPECIES

- ⇒ Learn to recognize invasive species and report them.
- ⇒ Do regular checks for invasive species on, and off shore, from your property.
- ⇒ Develop a plan to deal with invasive species on, and off shore, from your property.
- ⇒ Share your knowledge with neighbours.
- ⇒ Identify pathways of introduction and prevent new non-native species from establishing.
- ⇒ Garden and landscape with Ontario native trees, shrubs, wildflowers, ferns, and grasses.
- ⇒ Don't move firewood, you can introduce new forests pests to your region.
- ⇒ Ensure contractor equipment is cleaned between sites, especially mowing equipment.
- ⇒ Don't dump yard waste into natural areas.
- ⇒ Never release aquarium or water plants into nature.
- ⇒ Never release your bait buckets into our lakes and rivers.
- ⇒ When moving your boat, always clean, drain and dry between lakes and rivers.
- ⇒ Avoid driving through weedy areas and moving invasive plants around the lake.

**REPORT INVASIVE SPECIES:** Invading Species Hotline 1-800-563-7711 or visit [EDDMapS Ontario](#)

### CLEAN, DRAIN, AND DRY YOUR BOAT BETWEEN LAKES & RIVERS

Boats transported from one body of water to another often carry seeds, spores, eggs or larvae of aquatic species on their surface, or in any stored water that is released. This can result in the invasion of species into new bodies of water. To minimize the risk of new invasive species entering (or leaving) the lake, boats should be thoroughly cleaned before going between bodies of water. Invasive species can be removed by washing boats with pressurized water (preferably hot), and draining any water from them.

**As of January 1<sup>st</sup>, 2022**, Ontario has regulated watercraft (boats, canoes, kayaks) as a carrier of invasive species under the *Invasive Species Act*. Boaters are now required to take steps **before transporting** a boat or boat equipment overland to reduce chance of spread, see page 23. [Learn More](#)



## EURASIAN WATER MILFOIL (*MYRIOPHYLLUM SPICATUM*)

Native to Europe, Asia, and North Africa, it's believed the species was introduced to North America in the late 19th century from ornamental aquatic gardens and/or ships. It has since become one of the most problematic and widespread aquatic invasive species in North America. This species forms dense, underwater mats, that shade out native vegetation. (Simkovic, 2020a)

**IDENTIFICATION:** Eurasian water milfoil is a perennial that grows under the water surface. It can be identified by its green leaves that circle the stem, each leaf having 12 or more thread-like segments. It is important to note that the native Northern water milfoil has 11 or fewer segments. It prefers shallow water 1-3m deep, however, it can root in up to 10m of water (Simkovic, 2020a).

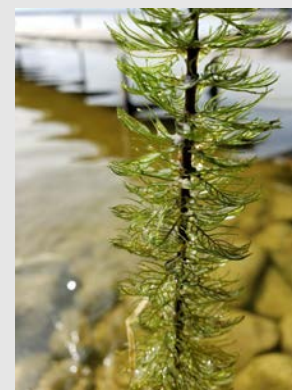


**IMPACTS:** Eurasian water milfoil reduces the diversity and density of fish and invertebrates, as well as displaces many species of native aquatic plants. As a result, high densities of Eurasian water milfoil can result in degraded ecosystems and the loss of biodiversity. Dense patches can impair recreational values, as they may make swimming, boating, and fishing difficult due to entanglement (Simkovic, 2020a).



### NATIVE SPECIES LOOK-ALIKES

**Northern water milfoil** (right) has a dark green stem, and only up to 11 thread-like segments per leaf. **Coontail** (left) is similar to both milfoils. However, unlike either milfoil, it has segments that fork into two.





## **WATCH, REPORT, STOP THE SPREAD**

**HAND REMOVAL & RAKING:** This method is low cost, relatively easy, though does take effort. Care should be taken to remove the whole plant, including the root, and any broken fragments. This method is best when focused on a localized area, and will need to be repeated annually (Simkovic, 2020a).

**BENTHIC BARRIERS:** These are biodegradable mats that cover the benthic layer of the lake bottom, and block plants from growing. This method can be useful in areas where new small patches of the plant appear. This method is costly, labour intensive, and requires routine monitoring and maintenance. In addition, barriers are a nonselective control measure, negatively affecting the growth of native aquatic plants, fish spawning, and nursery habitats (Simkovic, 2020a).

**MECHANICAL CONTROL METHODS:** Mechanical harvesting is the equivalent to mowing a lawn. It needs to be done repeatedly as the plant regrows. It is designed to remove as much material as possible. It can efficiently cover a large area and works immediately. It does not target specific species, and should only be used for very large, dense areas (Simkovic, 2020a).

**BIOLOGICAL CONTROL METHODS:** Three species of insects have been found to graze on Eurasian water milfoil: the Milfoil weevil (*Euhrychiopsis lecontei*), a species of midge (*Cricopopus myriophyllii*), and the introduced but naturalized Water veneer moth (*Acentria ephemerella*). Densities of these species often have to be artificially increased to cause enough damage to control the plant (Simkovic, 2020a).

**CHEMICAL CONTROL METHODS:** The herbicide “diquat” can be requested to control Eurasian water milfoil through the MECP. This particular herbicide is fast-acting and highly effective, but is not target-specific, and should be reserved for extreme cases. Application of this herbicide must also take place annually, as it only kills the top part of the plant, leaving the roots unaffected (Simkovic, 2020a).

[Eurasian Water Milfoil - Ontario Invasive Plant Council](#)



## **EUROPEAN FROG-BIT (*HYDROCHARIS MORSUS-RANAE*)**

**HISTORY:** European frog-bit is a free-floating aquatic plant native to Eurasia. It was introduced to North America for ornamental use in Ottawa in 1932 and escaped into Rideau Canal and has now spread across Ontario, Quebec and into the U.S. (Simkovic, 2020b)

**IDENTIFICATION:** It can be identified by its leathery and heart-shaped leaves. The underside of the plant is dark purple to red. From June to September, small white flowers with three petals and a yellow center can be seen on the plant. Don't confuse with White water lily, White water lily is rooted while Frog-bit is free floating (Simkovic, 2020b)

**IMPACTS:** Grows rapidly and creates large, densely tangled floating mats crowding out native vegetation. It favors slow moving waters such as sheltered inlets, slow moving rivers, ditches and ponds (Simkovic, 2020b).

### **NATIVE SPECIES LOOK-ALIKES**



**American white water lily** is similar in appearance to European frog-bit, but is much larger and has a different flower. The leaves of frog-bit are 2-5 cm wide, while the water lilies are 15-25 cm. The flowers of Frog-bit are smaller and have three slightly triangular petals and a yellow centre. The flowers of White water lily are larger, round, and have many overlapping petals (Simkovic, 2020b).

### **WATCH, REPORT, STOP THE SPREAD**

**COLLECTING EUROPEAN FROG-BIT BY HAND** is the most practical way to control it. This can be done by collecting the entire growing portion of the plant, including the stems, leaves, buds, and roots. Many parts of the plant are capable of re-growing into an entire plant when broken off, it is imperative to collect as much as possible.

**RAKING MAY ALSO BE FEASIBLE**, though may lead to fragmentation of the plant and should be done with hand removal.

**BENTHIC MATS CAN BE USED** to smother patches of Frog-bit. This method is usually very effective, but can be disturbing to habitat, and is most practical for small patches (Simkovic, 2020b).

[European Frog-bit - Ontario Invasive Plant Council](#)



## FLOWERING RUSH (*BUTOMUS UMBELLATUS*)

Native to Eurasia and Africa, Flowering rush was brought to North America as an ornamental plant for ponds and water gardens, which escaped into nearby waterways. It's also suspected that trans-Atlantic ships encouraged spread (Simkovic, 2020c).

**IDENTIFICATION:** It can be recognized by its sedge-like characteristics. It reaches 1.5-2m in height. The flowers grow in an umbrella shaped structure, are white to deep purple in colour, each growing on a thin stalk. Although flowering rush can grow in a variety of ecosystems, it prefers shallow areas with fluctuating water levels such as riparian zones, lakes, wetlands, and marshes (Simkovic, 2020c).



**IMPACTS:** It creates large and dense colonies, hindering recreational activity such as boating, fishing, and swimming. The species outcompetes native vegetation and impacts native fish habitat and nesting birds (Simkovic, 2020c).

### WATCH, REPORT, STOP THE SPREAD

**CUT THE PLANT BELOW THE WATER LINE:** This can be effective with small to medium sized populations. This strains rhizome growth, limiting its spread during the growing season. Perform multiple cuts throughout the year for best results.

**CUT SEED HEADS:** This method can help discourage spread, however it does not address or prevent the main method of spread, vegetative reproduction via spread of rhizomes and bulbils.

**HAND REMOVAL:** Effective on individual plants or small populations when done annually during the growing season and over several years. The goal is to prevent small, isolated populations from spreading. This method is simple and inexpensive, however it is labor-intensive and difficult to remove all plant material.

**MOWING IS NOT RECOMMENDED.** Mowing may increase the spread through rhizome fragmentation (Simkovic, 2020c).

[Flowering Rush - Ontario Invasive Plant Council](#)



## **CURLY PONDWEED (*POTAMOGETON CRISPUS*)**

**HISTORY:** A pondweed native to Eurasia and Africa and introduced to North America in the 1800s. Although it is not clear how it ended up in North America, it is likely due to deliberate cultivation for water gardens (Adirondack Watershed Institute, n.d.).

**IDENTIFICATION:** This species can be identified by its wavy, alternating leaves with serrated edges, which are dark reddish green in colour. The stems are pale with a slightly reddish hue to them, and can grow up to 5 metres long (Adirondack Watershed Institute, n.d.).

**IMPACTS:** This species grows rapidly in shallow water, and has few predators to keep it in check. In depths of up to 5 metres, it can spread very quickly and form dense mats. This can have negative impacts by pushing out native species, or rendering an area inaccessible for recreational activities such as swimming, fishing, or boating (Adirondack Watershed Institute, n.d.).



### **WATCH, REPORT, STOP THE SPREAD**

**MANUAL CONTROL METHODS** - Information on management strategies for this species in Canada are lacking as it has not yet become a significant problem in its Canadian range.

**This species may be controlled by hand pulling or mechanical harvesting.**





## EUROPEAN COMMON REED/INVASIVE PHRAGMITES (*PHRAGMITES AUSTRALIS*)

**HISTORY:** Native to Eurasia, it is likely that this plant was introduced to North America in the 1800s as both a seed contaminant in soil ballast and intentionally through the horticulture trade. It is common in lakes and coastal habitats, as well as major highways and secondary roads. This introduced species is causing significant damage to Ontario's biodiversity, wetlands, and beaches. (Nichols, 2020).

**IDENTIFICATION:** This invasive plant can grow up to 5 meters tall. It is easily distinguished later in the growing season during and after flowering. Large, dense seed heads that are purple/brown in colour are produced and as the plant matures, they become fluffier in appearance and white in colour (Nichols, 2020).

**IMPACTS:** Phragmites is a threat to native plant and wildlife diversity. This invasive plant also negatively affects human health and safety, infrastructure and services. It can impede farming, block drainage ditches, damage asphalt, and cause road safety issues by obstructing roadway sightlines. Dead standing stalks are combustible, which increases the risk of fire (Nichols, 2020).



### NATIVE SPECIES LOOK-ALIKES

Distinguishing between the two can sometimes be difficult, since characteristics may overlap, and hybrids complicate it further.

The red stem segments on the native phragmites (right) is a fairly good way for a non-expert to distinguish it from invasive phragmites (above).

[Invasive Phragmites—Ontario Invasive Plant Council](#)





## **WATCH, REPORT, STOP THE SPREAD**

### **DRY LAND MANAGEMENT:**

**HERBICIDES:** Herbicide applications can be an effective method to manage Phragmites stands when used in accordance with the label, with appropriate authorization and permits, and when an integrated pest management approach is applied.

**SELECTIVE CUTTING/SPADING:** Manually cutting Phragmites reduces photosynthesis and deprives the belowground structures of energy (Nichols, 2020). A tool commonly used for this are raspberry cane cutters.

### **WET MANAGEMENT SITES:**

***\* ANY IN-WATER WORK MAY REQUIRE PERMITS—ALWAYS CHECK BEFORE YOU START***

**FLOODING:** This control method acts as a stressor to Phragmites by reducing the amount of oxygen that can travel to the root system in high water conditions. Low oxygen levels can decrease the growth of the plant or cause die-off.

**SELECTIVE CUTTING/SPADING:** Selective cutting of Phragmites beneath the waterline (at the substrate line) can effectively drown the plant by inhibiting the supply of oxygen to lower plant parts. In suitable water depths, after cutting has occurred, new shoots cannot successfully reach the surface to collect oxygen (Nichols, 2020). A tool commonly used for this are raspberry cane cutters.

**[Invasive Phragmites - Ontario Invasive Plant Council](#)**



## **STARRY STONEWORT (*NITELLOPSIS OBTUSA*)**

**HISTORY:** Starry stonewort is an invasive macroalgae native to Eurasia. It is believed that the plant was introduced through the St. Lawrence River by a ship ballast. It then spread throughout the Great Lakes basin. This plant forms dense mats in waters 2-10 meters in depth (Invasive Species Centre, n.d.)

**IDENTIFICATION:** Starry stonewort is a plant-like form of algae. This plant reaches 30cm to 10m in the water column and has white, star shaped bulbils on the main axes. The stem is smooth green, and the branchlets are in whorls of 4 to 6 (Invasive Species Centre, n.d.)

**IMPACTS:** Starry stonewort reduces biodiversity by producing dense mats and competing with native vegetation. These dense mats of vegetation can also impede the movement of fish, spawning activity, water flow, and recreational activity (Invasive Species Centre, n.d.).



### **WATCH, REPORT, STOP THE SPREAD**

**Help Stop the spread of Starry Stonewort by:**

- Clean, drain and dry your boat between locations
- Report starry stonewort when it is observed—See EDDS Maps
- Avoid disturbing areas of starry stonewort with boats or equipment which may increase the risk of fragmentation

[Starry Stonewort - Invasive Species Centre](#)



## **WATER SOLDIER (*STRATIOTIES ALOIDES*)**

**HISTORY:** Water soldier was first detected in Ontario in the Trent river, near the hamlet of Trent River. It is unknown exactly where it arrived from, but likely it escaped from water gardens. Since then, this species has expanded further down the Trent River as well as a handful of other locations.

**IDENTIFICATION:** This species is similar in appearance to an aloe plant, and has broad, serrated leaves, and floats in open shallow water. There are a few potential native look-alikes in Ontario, but none of them have the sharp serrated leaves of the Water soldier, so this is a good identifying feature. The Water soldier may produce flowers, but in Ontario it seems to only reproduce vegetatively.



**IMPACTS:** Grows rapidly and creates large, densely tangled floating mats crowding out native vegetation, and potentially alters water chemistry in a way that harms phytoplankton populations. Water soldier can also create dense mats that impact recreational opportunities such as boating, fishing and swimming. The latter is particularly affected because the Water soldier has very sharp leaves that can easily cause painful cuts.



### **WATCH, REPORT, STOP THE SPREAD**

- Learn to recognize water soldier. Do not plant water soldier in your water garden.
- Avoid spreading water soldier: clean and inspect your watercraft between locations and avoid any known patches of water soldier.
- Report your sightings to the EDDS mapping website here [EDDMapS Ontario](#)

[Water Soldier - Invasive Species Centre](#)



## EUROPEAN WATER CHESTNUT (*TRAPA NATANS*)

**HISTORY:** European water chestnut was introduced to the United States in the late 19th century and has since spread to other locations. There main areas in Ontario where it is present are the Voyageur provincial park area, and the St Lawrence near Kingston, although it has spread to a variety of other places.

**IDENTIFICATION:** This species is distinct amongst wetland plants in Ontario, and does not have any close look-alikes. It floats on the water's surface and have spade shaped serrated leaves. The leaves are on long stems and fan out from a "rosette". The "nuts" are dark, woody and have two hooks.

**IMPACTS:** Grows rapidly and creates large, densely tangled floating mats crowding out native vegetation, and reduce biodiversity in aquatic habitats. The dense patches also impact recreational activities like boating, fishing, swimming and beach-going. The nuts are sharp and barbed and pose a risk to beach users. They may accumulate in sediment and are hard to clean up.



### WATCH, REPORT, STOP THE SPREAD

- Learn to recognize European water chestnut . Do not plant water chestnut in your water garden.
- Avoid spreading European water chestnut. Clean and inspect your watercraft between locations and avoid any known patches of the invasive plant.
- Report your sightings to the EDDS mapping website here [EDDMapS Ontario](#)

[European Water Chestnut - Invasive Species Centre](#)



## INVASIVE SPECIES WATCH LIST

Included in the list below are invasive species known to be present within/near the greater watershed and pose a threat to East Lake. Early detection and control measures can slow and stop the spread of new invasive species.

### **Aquatic Vegetation**

- \*Common Reed/Phragmites (*Phragmites australis*)
- \*Curly-Leaved Pondweed (*Potamogeton crispus*)
- \*Eurasian Water Milfoil (*Myriophyllum spicatum*)
- \*European Frog-bit (*Hydrocharis morus-ranae*)
- European Lake Sedge (*Carex acutiformis*)
- European Water Chestnut (*Trapa natans*)
- Fanwort (*Cabomba caroliniana*)
- \*Flowering Rush (*Butomus umbellatus*)
- Hydrilla (*Hydrilla verticillata*)
- Parrotfeather (*Myriophyllum aquaticum*)
- Reed or Giant Manna Grass (*Glyceria maxima*)
- \*Starry Stonewort (*Nitellopsis obtusa*)
- Waterweed (*Egeria densa*)
- Water Hyacinth (*Eichhornia crassipes*)
- Water Lettuce (*Pistia stratiotes*)
- Watermoss-Salvinia species (*Salvinia molesta*, *S. auriculata*, *S. minima*, *S. natans*)
- Water Soldier (*Stratiotes aloides*)
- Yellow Iris (*Iris pseudacorus*)

### **Parasites and Disease**

- Asian fish tapeworm parasite
- Koi herpesvirus

### **Invertebrates**

- Bloody Red Shrimp Spiny and Fish Hook Water Flea
- Rusty Crayfish
- Zebra and Quagga Mussels

### **Terrestrial Vegetation:**

- \*Common Reed/Phragmites (*Phragmites australis*)
- English Ivy (*Hedera helix*)
- European or Black Alder (*Alnus glutinosa*)
- European Spindletree (*Euonymus europaeus*)
- Garlic Mustard (*Alliaria petiolata*)
- Giant Hogweed (*Heracleum mantegazzianum*)
- Goutweed (*Aegopodium podagraria*)
- Manitoba Maple (*Acer negundo*)
- Norway Maple (*Acer plantanoides*)
- Non-native bush honeysuckles (*Lonicera* spp.)
- Periwinkle (*Vinca minor*)
- Purple Loosestrife (*Lythrum salicaria*)
- Japanese Knotweed (*Polygonum cuspidatum*)
- Reed or Giant Manna Grass (*Glyceria maxima*)

*\* identified in recent aquatic vegetation survey*

### **Fish**

- Asian Carp
- Goldfish
- Northern Snakehead
- Rainbow Smelt
- Round Goby
- Rudd
- Sea Lamprey
- Tench
- Tubenose Goby

### **Forest Pests**

- Asian Long-horned Beetle
- Emerald Ash Borer
- LDD Moth
- Invasive Earthworms
- Mountain Pine Beetle

### **Pathogens**

- Beech Bark Disease
- Butternut Canker
- Dutch Elm Disease
- Oak Wilt
- Sudden Oak Death



## INVASIVE SPECIES ACT 2015

The Invasive Species Act is a piece of provincial legislation with the purpose of regulating the prevention and management of invasive species in Ontario (OMNRF, 2021). Most notably, the act names a number of species that are prohibited and restricted in Ontario. Prohibited species are those that are not allowed to enter the province at all, while restricted species are prohibited from entering provincial parks and conservation areas, or being released into the wild (OMNRF, 2021). Additionally, the act sets out how management plans for invasive species will be authorized and executed. While there are no specific actions listed in the act (as the needs for each species vary widely), plans to manage invasive species may have to be approved before they can be implemented (Smith & Downe, n.d.). This aspect of the act is relevant to any management plans, as authorizations may be required to implement certain management strategies.

### **CONTROLLING AQUATIC PLANTS MAY REQUIRE PERMITS. ALWAYS CHECK BEFORE YOU BEGIN WORK:**

- Ministry of Natural Resources
- Ontario Ministry of the Environment
- Department of Fisheries and Oceans
- Conservation Authorities

**As of January 1<sup>st</sup>, 2022**, Ontario has regulated watercraft (boats, canoes, kayaks) as a carrier of invasive species under the *Invasive Species Act*.

Boaters are now required to take the following steps **before transporting** a boat or boat equipment overland:

- remove or open drain plugs to allow water to drain from the boat or boat equipment
- take reasonable precautions to remove all aquatic plants (weeds), animals and algae from any boat, boat equipment, vehicle or trailer

Before reaching a launch site or placing a watercraft in any body of water in Ontario, boaters are required to ensure their boat, boating equipment, vehicles or trailers are free of all:

- aquatic plants
- animals
- algae

It is illegal to place a boat, boating equipment or any vehicle or trailer into any body of water if there are any aquatic plants, animals or algae attached to it. (<https://www.ontario.ca/page/invasive-species-action-plans/#boaters>)



## AQUATIC & WETLAND SPECIES AT RISK

Six aquatic species at risk are known or thought to occur in East Lake: The Pugnose shiner, Bridle shiner, Eastern sand darter, Grass pickerel, Eastern pondmussel and Spotted gar. In addition, the lake is considered critical habitat for Pugnose shiner. These species are at risk to varying degrees as a result of environmental changes and human activities. Landowners can help protect these species by learning about their requirements for survival, protecting and restoring aquatic habitat, and taking actions to improve water quality. The Department of Fisheries and Oceans (DFO) has developed an online tool that maps species at risk in water bodies around the country. You can use this tool to identify which species at risk are in your lake, and learn more about them. [Aquatic Species at Risk Map](#)

When pursuing a project that will impact your shoreline or nearby lakebed in species at risk critical habitat, you will need to contact DFO to determine the necessary permits or habitat considerations for carrying out the project. [Find out about federal aquatic species at risk requirements](#)

Several provincially designated species at risk are also present on West Lake. These include several species of wetland birds and turtles. As with federally designated species, projects in or near water that affect provincially designated species at risk and/or their habitat may require permits. [Find out about provincial species at risk requirements](#)



**Pugnose Shiner**



**Blanding's Turtle**



**Black Tern**





## STEWARDSHIP RECOMMENDATIONS

- Consider a lake-wide invasive species watch program and encourage residents to watch and report known invasive species and keep an eye out for those on the “Watch List”
- Organize lake-wide invasive species pulls/mechanical removals
- Install boat cleaning signage at all public boat launches
- Consider installing a boat cleaning station at busy boat launches
- Provide education and outreach materials on [invasive species](#) to lake residents, cottagers, renters, and visitors, and participants of fishing derbies
- Consider leveraging funding to tackle invasive species lake-wide, e.g. a targeted Phragmites control program

## LANDOWNER PROGRAMS

- Consider shoreline naturalization to restore sections of your waterfront to a natural state with shrubs and wildflowers and trees. Apply to [Quinte Conservation’s Shoreline Planting Program](#)
- When gardening and landscaping consider planting native Ontario trees, shrubs, wildflowers, vines, ferns, and grasses. Contact [Quinte Conservation](#) for recommendations of native species suitable to your site.
- Check with your local conservation authority ([Quinte Conservation](#) ) regarding agricultural landowner grants for soil testing, cover crop funding, waterway buffer planting programs and grants, livestock fencing grants and alternate watering system grants, and erosion/ water quality improvement project grants such as barnyard runoff control, stream bank stabilization, wetland construction, storm water management.

# Resources

- Adirondack Watershed Institute. (n.d.). *Curly Leaf Pondweed (Potamogeton crispus)*. [potamogeton\\_crispus\\_1.pdf \(adkwatershed.org\)](http://potamogeton_crispus_1.pdf(adkwatershed.org))
- COSEWIC. (2013). *COSEWIC Assessment and Status Report on the Pugnose Shiner (Notropis anogenus) in Canada*. [Pugnose Shiner,Notropis anogenus \(canada.ca\)](http://PugnoseShiner,Notropis%20anogenus%20(canada.ca)) .
- Croft, M.V., & Chow-Fraser, P. (2007). Use and Development of the Wetland Macrophyte Index to Detect Water Quality Impairment in Fish Habitat of Great Lakes Coastal Marshes. *Journal of Great Lakes Research*, 33 (Special issue 3):172-197. [01 Seq 1-4 \(urbanmonitoring.ca\)](http://01Seq1-4(urbanmonitoring.ca))
- Environment Canada. (2004). *An Invasive Alien Species Strategy for Canada*. [Microsoft Word - Invasives - IAS Strategic Plan September 1 2004 with change. \(publications.gc.ca\)](http://MicrosoftWord-Invasives-IASStrategicPlanSeptember12004withchange.(publications.gc.ca))
- EnviroScience. (2014, October 1). *ES to Discontinue Milfoil Solution Services*. [ES to Discontinue Milfoil Solution Services - EnviroScience : EnviroScience \(enviroscienceinc.com\)](http://ES%20to%20Discontinue%20Milfoil%20Solution%20Services-%20EnviroScience%3A%20EnviroScience(enviroscienceinc.com))
- Fisheries and Oceans Canada. (2012). *Pugnose shiner (Notropis anogenus): recovery strategy 2012*. [Pugnose shiner \(Notropis anogenus\): recovery strategy 2012 - Canada.ca](http://PugnoseShiner(Notropis%20anogenus):recoverystrategy2012-Canada.ca)
- Invasive Species Centre. (n.d.). *Starry Stonewort*. [Starry Stonewort – Invasive Species Centre](http://StarryStonewort-InvasiveSpeciesCentre)
- Manitoba Purple Loosestrife Project. (2006). *Curly Leaf Pondweed - An invasive plant heading towards Manitoba: Potamogeton crispus*. [fs\\_pondweed.pdf \(invasivespeciesmanitoba.com\)](http://fs_pondweed.pdf(invasivespeciesmanitoba.com))
- Nichols, G. (2020). *Invasive Phragmites (Phragmites australis): Best Management Practices in Ontario*. Ontario Invasive Plant Council. [OIPC BMP Phragmites April302021 D10 WEB.pdf \(ontarioinvasiveplants.ca\)](http://OIPC_BMP_Phragmites_April302021_D10_WEB.pdf(ontarioinvasiveplants.ca))
- Ontario Ministry of Natural Resources and Forestry. (2021, November 2). *Managing invasive species in Ontario*. Queen's Printer for Ontario. [Managing invasive species in Ontario | Ontario.ca](http://ManaginginvasivespeciesinOntario|Ontario.ca)
- Quinte Conservation, Friends of East Lake, County of Prince Edward & French Planning Services Inc. (2013). *East Lake: State of the Lake 2012/2013*. [East Lake Stewardship Report 2013.pdf \(quinteconservation.ca\)](http://EastLakeStewardshipReport2013.pdf(quinteconservation.ca))
- Simkovic, V. (2020a). *Eurasian Water-Milfoil (Myriophyllum spicatum): Best Management Practices in Ontario*. Ontario Invasive Plant Council. [Eurasian-Water-Milfoil\\_Edn1.0\\_March2020.pdf \(ontarioinvasiveplants.ca\)](http://Eurasian-Water-Milfoil_Edn1.0_March2020.pdf(ontarioinvasiveplants.ca))
- Simkovic, V.(2020b). *European Frog-Bit (Hydrocharis morsus-ranae): Best Management Practices in Ontario*. Ontario Invasive Plant Council. [EuropeanFrog-Bit\\_Edn1.0\\_March2020.pdf \(ontarioinvasiveplants.ca\)](http://EuropeanFrog-Bit_Edn1.0_March2020.pdf(ontarioinvasiveplants.ca))
- Simkovic, V. (2020c). *Flowering Rush (Butomus umbellatus): Best Management Practices in Ontario*. Ontario Invasive Plant Council. [FloweringRush\\_Edn1.0\\_March2020.pdf \(ontarioinvasiveplants.ca\)](http://FloweringRush_Edn1.0_March2020.pdf(ontarioinvasiveplants.ca))
- Smith, M., & Downe, J. (n.d.). *Overview of the Invasive Species Act, 2015*. Ontario Invasive Plant Council. <https://www.ontarioinvasiveplants.ca/wp-content/uploads/2016/06/ISA-summary-OIPC-March-9th.pdf>

# Image attributions

Phragmites (native) – Photo attribution: (CC BY 4.0). Nate Martineau from [Photo 19839756, \(c\) Nate Martineau, some rights reserved \(CC BY\), uploaded by Nate Martineau · iNaturalist](#)

Flowering rush – Photo Attribution: (CC BY-SA 3.0). Christian Fischer from: [File:ButomusUmbellatus3.jpg - Wikimedia Commons](#)

Starry Stonewort – Photo attribution: (CC BY-SA 3.0 PL) – Wikimedia Commons User Panek from: [https://commons.wikimedia.org/wiki/File:Nitellopsis\\_obtusa\\_out\\_of\\_water.jpg](https://commons.wikimedia.org/wiki/File:Nitellopsis_obtusa_out_of_water.jpg)

Eurasian water milfoil - (CC BY 3.0) – Rob Routledge from: [File:Myriophyllum spicatum 5501493.jpg - Wikimedia Commons](#)

Curly Pondweed (Righthand) – (CC BY 3.0) Leslie J Mehrhoff from [File:Potamogeton crispus 5274005.jpg - Wikimedia Commons](#)